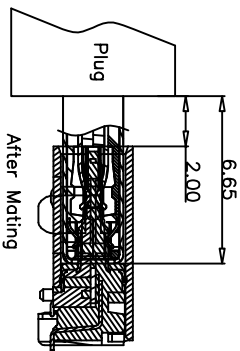
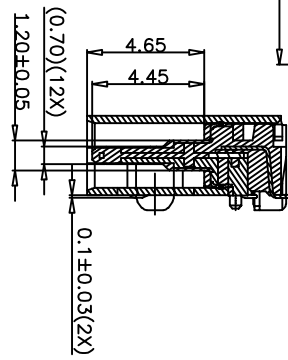
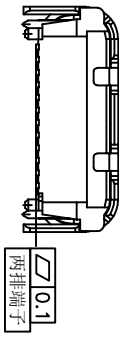
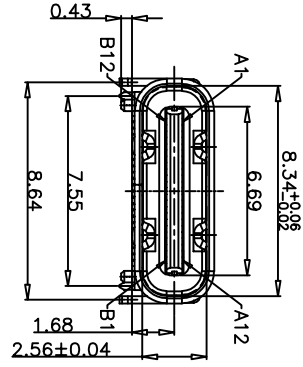


RECOMMENDED P.C.B. Dimension
Tolerances:±0.05mm



SECTION:A-A
USB TYPE-C PIN ASSIGNMENTS

PIN NUMBER	SIGNAL NAME	PIN NUMBER	SIGNAL NAME
A1	GND	B12	GND
A2	SSTXp1	B11	SSRXp1
A3	SSTXn1	B10	SSRXn1
A4	VBUS	B9	VBUS
A5	CC1	B8	SBUS
A6	Dp1	B7	Dn2
A7	Dm1	B6	Dp2
A8	SBUS1	B5	CC2
A9	VBUS	B4	VBUS
A10	SSRXn2	B3	SSTXn2
A11	SSRXp2	B2	SSTXp2
A12	GND	B1	GND

TOLERANCE

NAME(INTENDED USE)	TITLE:
CUSTOMER DRAWING	

PART NO.	FY23-68TC24F179-50 USB5.0 TYPE-C24P板 L7.9L 800
----------	--

DESIGN:	ZXM
---------	-----

CHED:	
-------	--

APPD:	
-------	--



DRAWG NO.	FY23-68TC24F179-50
-----------	--------------------

SCALE	1:1
-------	-----

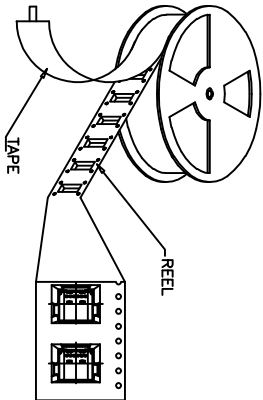
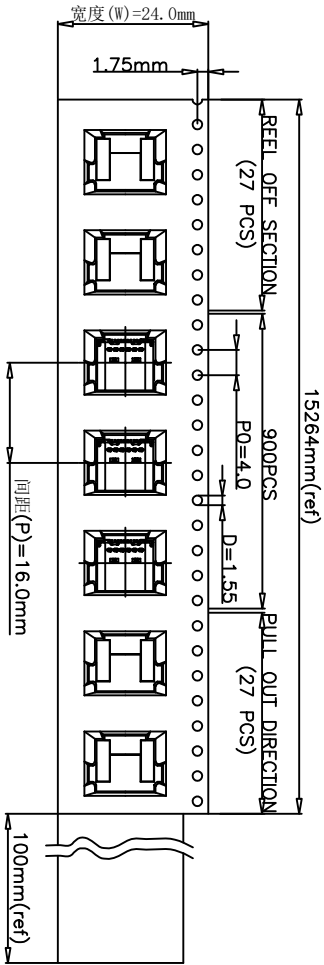
SHEET	1/2
-------	-----

REV.	A
------	---

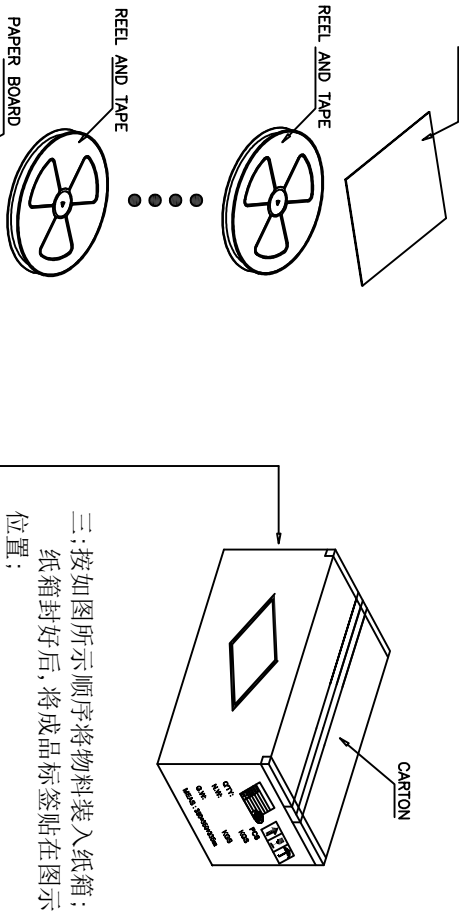
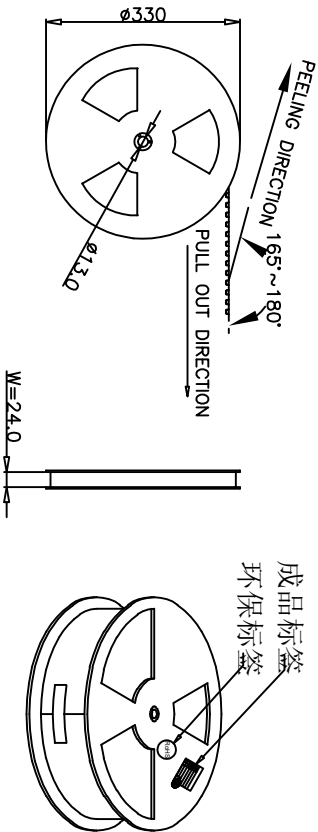
- NOTE:
- 1.MATERIAL SPECIFICATION:
 - 1.HOUSING:HIGH TEMPERATURE RESISTANT PLASTIC,U194 V-0.
 - 2.CONTACTS:COOPER ALLOY
 - 3.MID PLATE: STAINLESS STEEL
 - 4.FRONT SHELL: STAINLESS STEEL
- 2.PLATING SPECIFICATION:
 - 2-1.CONTACTS:
 - Ni 50u" MIN. UNDER PLATED OVER ALL.
 - Au PLATED ON THE FUNCTIONAL AREA OF CONTACT.
 - (GOLD PLATING THICKNESS FOLLOW THE P/N)
 - PLATING SPECIFICATIONS OF THE SOLDER AREA FOLLOW THE P/N
 - 2-2.FRONT SHELL:
 - Ni 30u" MIN. UNDER PLATED OVER ALL.
 - 2-3.SHIELD PLATE&EMI PLATE:
 - CLEAR ONLY
- 3.MECHANICAL PERFORMANCE:
 - 3-1.INSERTION FORCE: 0.5~2.0kgf.
 - 3-2.REMOVAL FORCE: 0.8kgf~2.0kgf.
 - 3-3.DURABILITY: 10000 CYCLES.
- 4.ELECTRICAL PERFORMANCE:
 - 4-1. CURRENT RATING:5.0A
 - VOLTAGE RATING:5.0V
 - 4-2. LCR: VBUS & GND PINS AND OTHER PINS: 40mΩ/PIN MAX. SHIELD: 50mΩ/MAX. LCR MAX. CHANGE OF ALL PINS: 10mΩ.
 - 4-3.INSULATION RESISTANCE: 100MΩ MIN
 - 4-4.DIELECTRIC WITHSTAND VOLTAGE:AC 100V FOR 1 MINUTE.
- 5. ENVIRONMENTAL PERFORMANCE:
 - OPERATING TEMPERATURE: -25℃~+85℃.
 - 6.IR REFLOW:
 - THE PEAK TEMPERATURE ON THE BOARD SHALL BE MAINTAINED FOR 10 SECONDS AT 260℃.
 - 7. SALT SPRAY TEST:48H

REV.	ECN NO.	DESCRIPTION	DATE	DESIGN

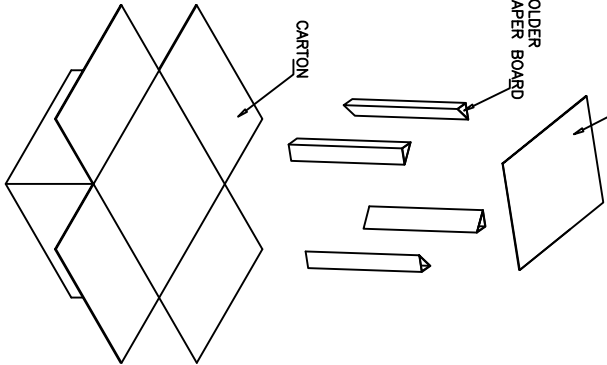
一：包裝開始，載帶及蓋帶需預留27PCS空口袋，並用膠帶將其貼緊於REEL軸心；將成品接地片朝下，方向一致，依次放入口袋，載帶不能有斷帶；如圖所示：



二：蓋帶的長度須比載帶CARRIER至少長100mm，且用膠紙固定在載帶上；
 葉輪正面貼成品物料標籤及環保標籤，蓋帶剝落力10克-71.5克；



三：按如圖所示順序將物料裝入紙箱；
 紙箱封好後，將成品標籤貼在圖示位置；



CONNECTOR(Pcs)	900	CARTON(箱)	9000
----------------	-----	-----------	------

TOLERANCE		NAME(INTENDED USE)	
X.X	±0.30 X.°	±10°	PART NO.
.XX	±0.20 .X°	± 8°	
.XXX	±0.10 .XX°	± 5°	
UNITS	mm	DESIGN: ZXM	
MATERILA	---	CHED:	
FINISH	---	APPD:	

FYXOU 广东富盈兴业精密科技实业有限公司
Guangdong FYXOU Precision Electronic Technology Co.,LTD.

TITLE:

FY23-68TC24F179-50 USB5.0 TYPE-C24P板上7.9L 800

DRAWG NO. FY23-68TC24F179-50

SCALE SHEET REV. 1:1 1/2 A