



Automotive Parts > Automotive Connector Accessories > Automotive Connector Caps & Covers > LEAVYSEAL Connector Backshells



Number of Positions: 92

Primary Product Color: Black

Protection & Strain Relief Accessory Type: Cover - Cable Exit

Primary Product Material: PA

Cable Exit Angle: 90°

[All LEAVYSEAL Connector Backshells \(25\)](#)

Features

Product Type Features

Protection & Strain Relief Accessory Type	Cover - Cable Exit
---	--------------------

Configuration Features

Number of Positions	92
---------------------	----

Body Features

Primary Product Color	Black
Primary Product Material	PA
Cable Exit Angle	90°

Mechanical Attachment

Strain Relief	Without
---------------	---------

Dimensions

Compatible Cable Bundle Diameter Range	29.5 mm[1.161 in]
--	-------------------

Usage Conditions

--	--



Compatible With Connector Style	Housing For Female Terminals
Operating Temperature (Max)	65 °C, 70 °C, 75 °C, 80 °C, 85 °C, 90 °C, 100 °C, 105 °C, 110 °C, 120 °C[248 °F]
Operating Temperature Range	-40 – 120 °C[-40 – 248 °F]

Industry Standards

UL Flammability Rating	UL 94HB
------------------------	---------

Packaging Features

Packaging Method	Box
Packaging Quantity	150

Other

Serviceable	Yes
-------------	-----

Product Compliance

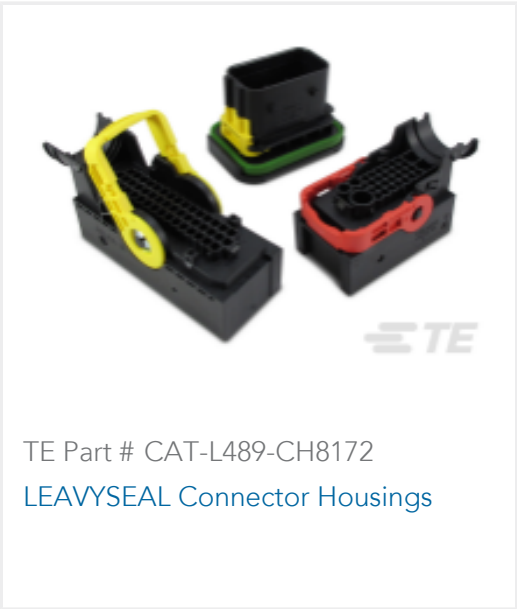
For compliance documentation, visit the product page on TE.com>

EU RoHS Directive 2011/65/EU	Compliant
EU ELV Directive 2000/53/EC	Compliant
China RoHS 2 Directive MIIT Order No 32, 2016	No Restricted Materials Above Threshold
EU REACH Regulation (EC) No. 1907/2006	Current ECHA Candidate List: JUNE 2025 (250) Candidate List Declared Against: JAN 2025 (247) Does not contain REACH SVHC
Halogen Content	BFR/CFR/PVC Free, but Br/Cl >900 ppm in other sources.
Solder Process Capability	Not applicable for solder process capability

Product Compliance Disclaimer

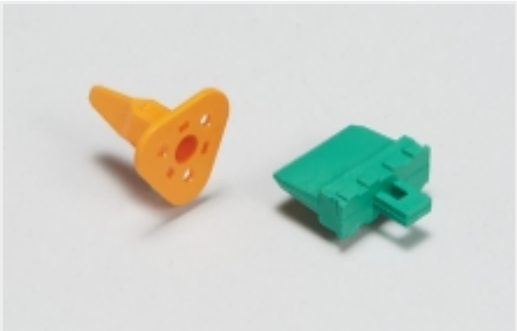
This information is provided based on reasonable inquiry of our suppliers and represents our current actual knowledge based on the information they provided. This information is subject to change. The part numbers that TE has identified as EU RoHS compliant have a maximum concentration of 0.1% by weight in homogenous materials for lead, hexavalent chromium, mercury, PBB, PBDE, DBP, BBP, DEHP, DIBP, and 0.01% for cadmium, or qualify for an exemption to these limits as defined in the Annexes of Directive 2011/65/EU (RoHS2). Finished electrical and electronic equipment products will be CE marked as required by Directive 2011/65/EU. Components may not be CE marked. Additionally, the part numbers that TE has identified as EU ELV compliant have a maximum concentration of 0.1% by weight in homogenous materials for lead, hexavalent chromium, and mercury, and 0.01% for cadmium, or qualify for an exemption to these limits as defined in the Annexes of Directive 2000/53/EC (ELV). Regarding the REACH Regulation, the information TE provides on SVHC in articles for this part number is based on the latest European Chemicals Agency (ECHA) ‘Guidance on requirements for substances in articles’ posted at this URL: <https://echa.europa.eu/guidance-documents/guidance-on-reach>

Compatible Parts



TE Part # CAT-L489-CH8172  
[LEAVYSEAL Connector Housings](#)

Also in the Series | **LEAVYSEAL**



[Automotive Connector Locks & Position Assurance\(4\)](#)



[Automotive Housings\(117\)](#)



[Connector Caps & Covers\(1\)](#)



[Other Automotive Connector Accessories\(15\)](#)

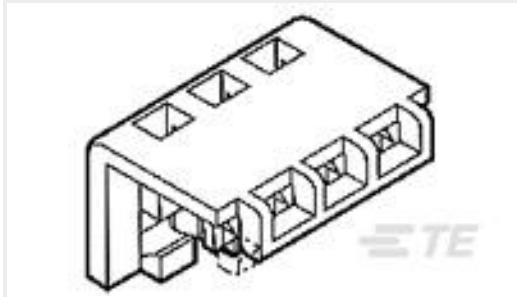
Customers Also Bought



TE Part #T4113502041-000  
[M12,MALE,RA,D CODE,4P,PG9,GOLD](#)



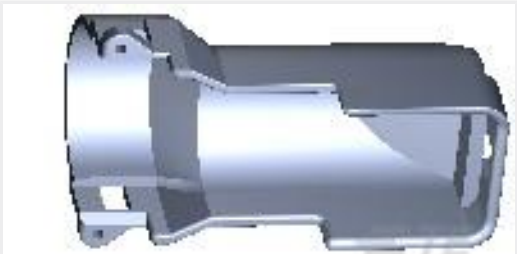
TE Part #327639  
[SPLICE BUTT PIDG 12-10/22-18](#)



TE Part #1-643067-2  
[12P MTA156 MOLDED COVER](#)



TE Part #4-643817-2  
[12P MTA156 CONN ASSY 18AWG LF](#)



TE Part #9-1394050-1  
[COVER F.21P REC-HSG](#)



TE Part #1-1438608-1  
[2POS MQS REC SEALED COD A](#)



TE Part #CAT-L489-CH8172  
[LEAVYSEAL Connector Housings](#)



TE Part #1-968875-1  
[AMP MCP 2.8, CONTACT SWS \(LP\)](#)

Documents

**Product Drawings**  
[COVER,90,DEGREE](#)

English

**CAD Files**  
**Customer View Model**  
[ENG\\_CVM\\_CVM\\_1703997-1\\_A.2d\\_dxf.zip](#)



English

[3D PDF](#)

3D

Customer View Model

[ENG\\_CVM\\_CVM\\_1703997-1\\_A.3d\\_igs.zip](#)

English

Customer View Model

[ENG\\_CVM\\_CVM\\_1703997-1\\_A.3d\\_stp.zip](#)

English

By downloading the CAD file I accept and agree to the [Terms and Conditions](#) of use.

Datasheets & Catalog Pages

[LEAVYSEAL CONNECTORS](#)

English

[ICT Terminals and Connectors Catalogue](#)

English

[CONNECTOR SELECTOR](#)

English

Product Specifications

[Application Specification](#)

English