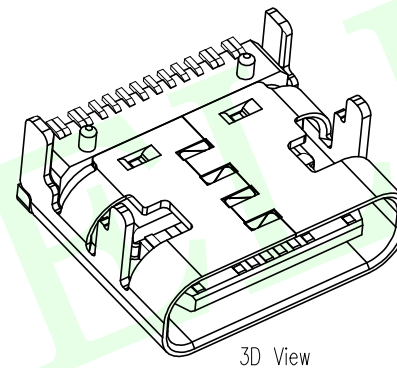
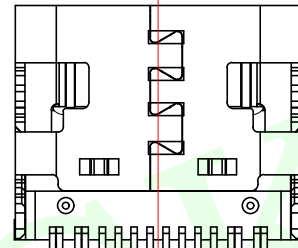
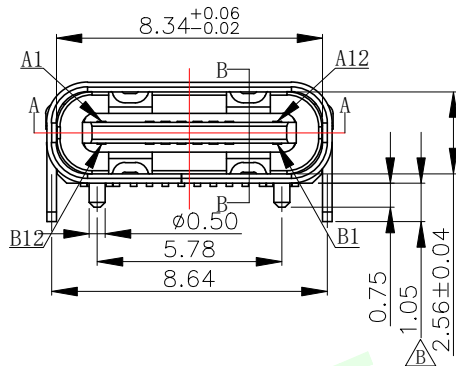
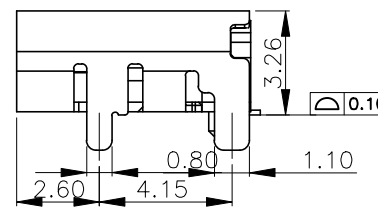
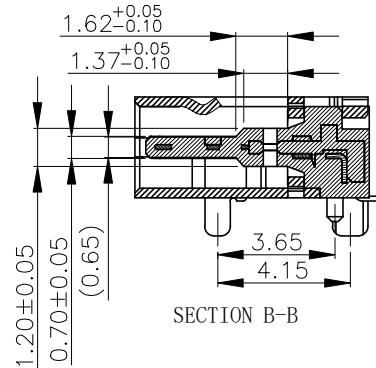
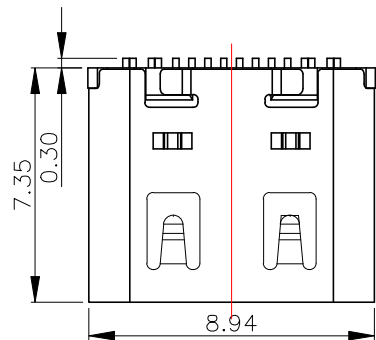
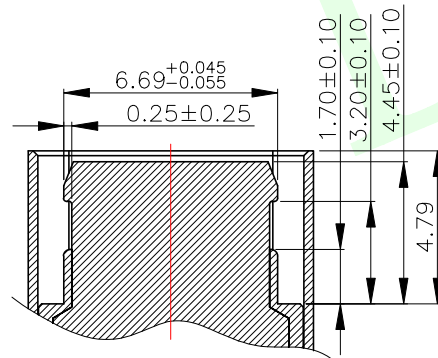


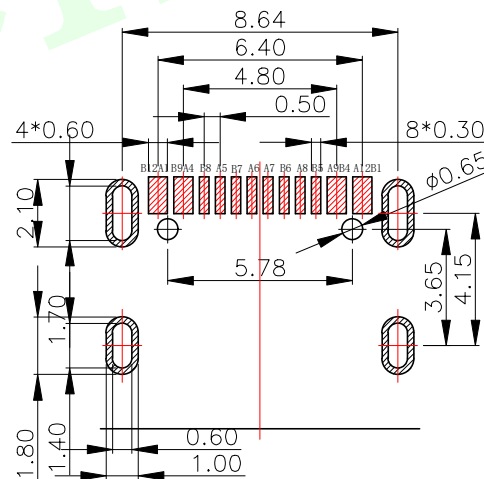
RoHS Compliant



3D View



SECTION A-A



(TOP VIEW)

RECOMMENDED P.C.B. LAYOUT (T:1.0~1.2mm)

TOLERANCE UNSPECIFIED ±0.05mm

SPECIFICATION:

- Material:
HOUSING&MOLDING:LCP,UL94 V-0
CONTACTS:COPPER ALLOY T=0.20mm
MIDDLE CLIP:SUS301-1/2H,T=0.15mm
SHELL:SUS, T=0.30mm
- Mechanical:
2.1.Mating force:5~20Nf Max.;
2.2.Unmating force:6~20Nf Min.;
2.3.Durability:10000 Cycles;
- Electrical:
3.1.Current Rating:3A Max.;
3.2.Voltage Rating:20V Max.;
3.3.Dielectric Withstanding voltage:100VAc;
3.4.Contact resistance:40m Ohms Max.;
3.5.Insulation Resistance:100M Ohms Min.;
- Environmental:
4.1.Operating temperature:-40°C~+85°C;
4.2.Wetting Temperature:265±5°C,5±0.5s

PIN ASSIGNMENT

A1	A2	A3	A4	A5	A6	A7	A8	A9	A10	A11	A12
GND			VBUS	CC1	D+	D-	SBU1	VBUS			GND
GND			VBUS	SBU2	D-	D+	CC2	VBUS			GND
B12	B11	B10	B9	B8	B7	B6	B5	B4	B3	B2	B1

LCK-TCF 824M-L735 Y L- G1

连晟欣
LCK

产品类别

TCF: TYPE C母头

TCM: TYPE C公头

产品流水料号识别码

壳长
L735: 7.35

电镀规格
G1: 1U
G3: 3U
(以此类推)

包装方式

L: 圆盘

B: 吸塑盒

有柱无柱 T: 管装

Y: 有柱
W: 无柱

QUADRANT POINT (QP)
TANGENCY POINT (TP)
INTERSECTION POINT (IP)

UNLESS OTHERWISE SPECIFIED, TOLERANCE:
X. ±0.25
X.x ±0.20
X.xx ±0.15
ANGULAR ±3°



联晟欣连接器 (深圳) 有限公司
Lianshengxin Connector (Shenzhen) Co., Ltd

DESIGN	Andy	DATE	2014.12.24	TITLE:	TYPE C 16PIN 母座带弹板上型7.35mm				
CHECKED		DATE							
APPROVED		DATE							
PART NO:	LCK-TCF824M-LXXXXX-G1			REV:	04	SCALE:	1:1	UNIT:	mm
DRAWING NO:				SIZE:	A4	SHEET:	1/1		