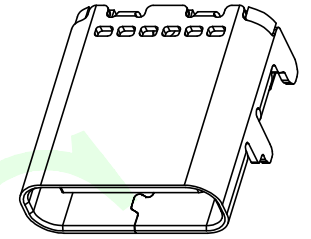
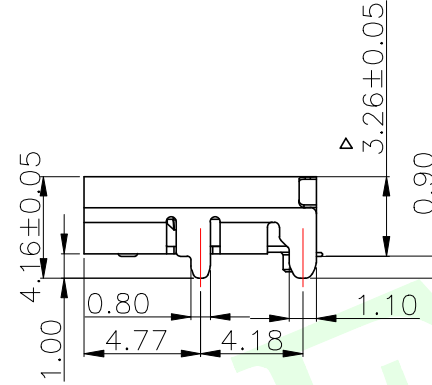
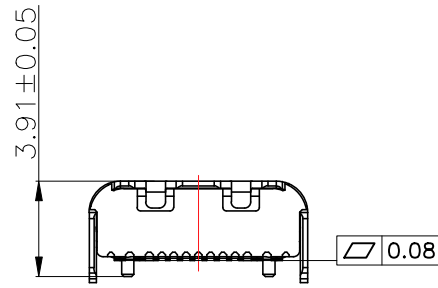
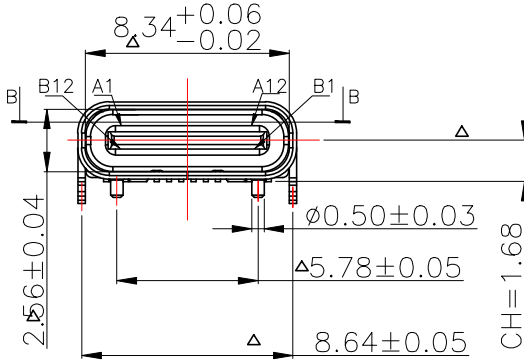


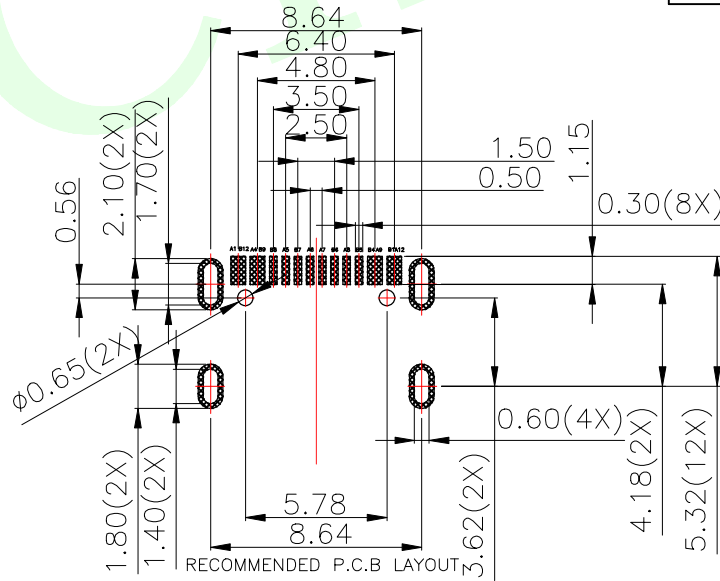
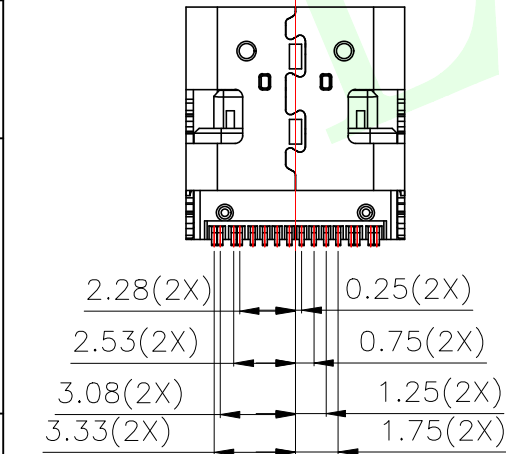
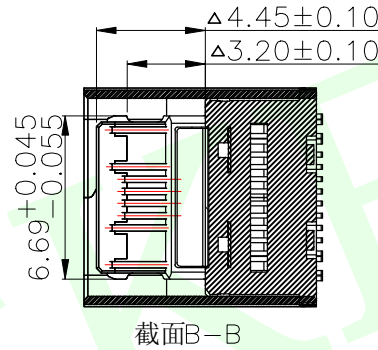
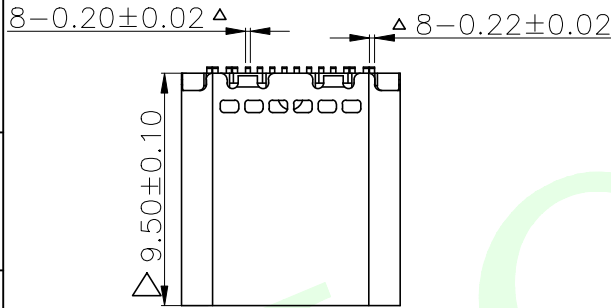
RoHS Compliant



- NOTE:
- MATERIAL:
 - INSULATOR: HIGH TEMPERATURE PLASTIC UL 94V-0;
 - CONTACT: COPPER ALLOY
 - SHELL: STAINLESS STEEL
 - ELECTRICAL CHARACTERISTICS:
 - CONTACT RESISTANCE: 40mΩ Max FOR INITIAL, 30mΩ CHANGE AFTER TEST. MEASURE AT 20mV, 100mA.
 - CONTACT CURRENT RATING: 5A FOR VBUS PIN; 1.25A FOR VCONN PIN.
 - DIELECTRIC WITHSTANDING VOLTAGE: 100V AC R.M.S.
 - INSULATION RESISTANCE 100MΩ Min
 - OPERATING TEMPERATURE: -40°C ~ 85°C
 - MECHANICAL CHARACTERISTICS:
 - MATING FORCE: 5~20 N.
 - UNMATED FORCE: 8~20N AFTER TEST
 - DURABILITY: 10,000 CYCLES
 - PLATING
 - TERMINAL CONTACT: (SEE TAB) GOLD PLATING ALL OVER 50u" Min NICKEL AND 80u" Min Tin ALL OVER 50u" Min NICKEL ON SOLDER AREA
 - SHELL: 50u" Min. NICKEL ALL OVER,
5. "△" Focus on size control

PIN ASSIGNMENT:

Pin No.	Signal Name	Pin No.	Signal Name
A1	CND	B12	CND
A2		B11	
A3		B10	
A4	VBUS	B9	VBUS
A5	CC1	B8	SBU2
A6	D+	B7	D-
A7	D-	B6	D+
A8	SBU1	B5	CC2
A9	VBUS	B4	VBUS
A10		B3	
A11		B2	
A12	CND	B1	CND



LCK-TCF 809 - LXXX Y L- G1

联晟欣 LCK
产品类别
TCF: TYPE C母头
TCM: TYPE C公头
产品流水料号识别码

壳长:
L950: 9.50
L100: 10.0
L117: 11.7
L124: 12.4

电镀规格
G1: 1U
G3: 3U
(以此类推)

包装方式
L: 圆盘
B: 吸塑盒
有柱无柱 T: 管装
Y: 有柱
W: 无柱

MEASURE POINT:	联晟欣连接器 (深圳) 有限公司 Lianshengxin Connector (Shenzhen) Co., Ltd				
QUADRANT POINT					
TANGENCY POINT	DESIGN	Andy	DATE	2014.12.24	TITLE:
INTERSECTION POINT	CHECKED		DATE		TYPE C板上单排16PIN加长款9.5&12.4mm
UNLESS OTHERWISE SPECIFIED, TOLERANCE:	APPROVED		DATE		无弹片
X. ±0.25	PART NO: LCK-TCF809-LXXXL-G1				REV: 04
X.x ±0.20	DRAWING NO: 102022121				SCALE: 1:1
X.xx ±0.15					UNIT: mm
ANGULAR ±3°					SHEET: 1/1