

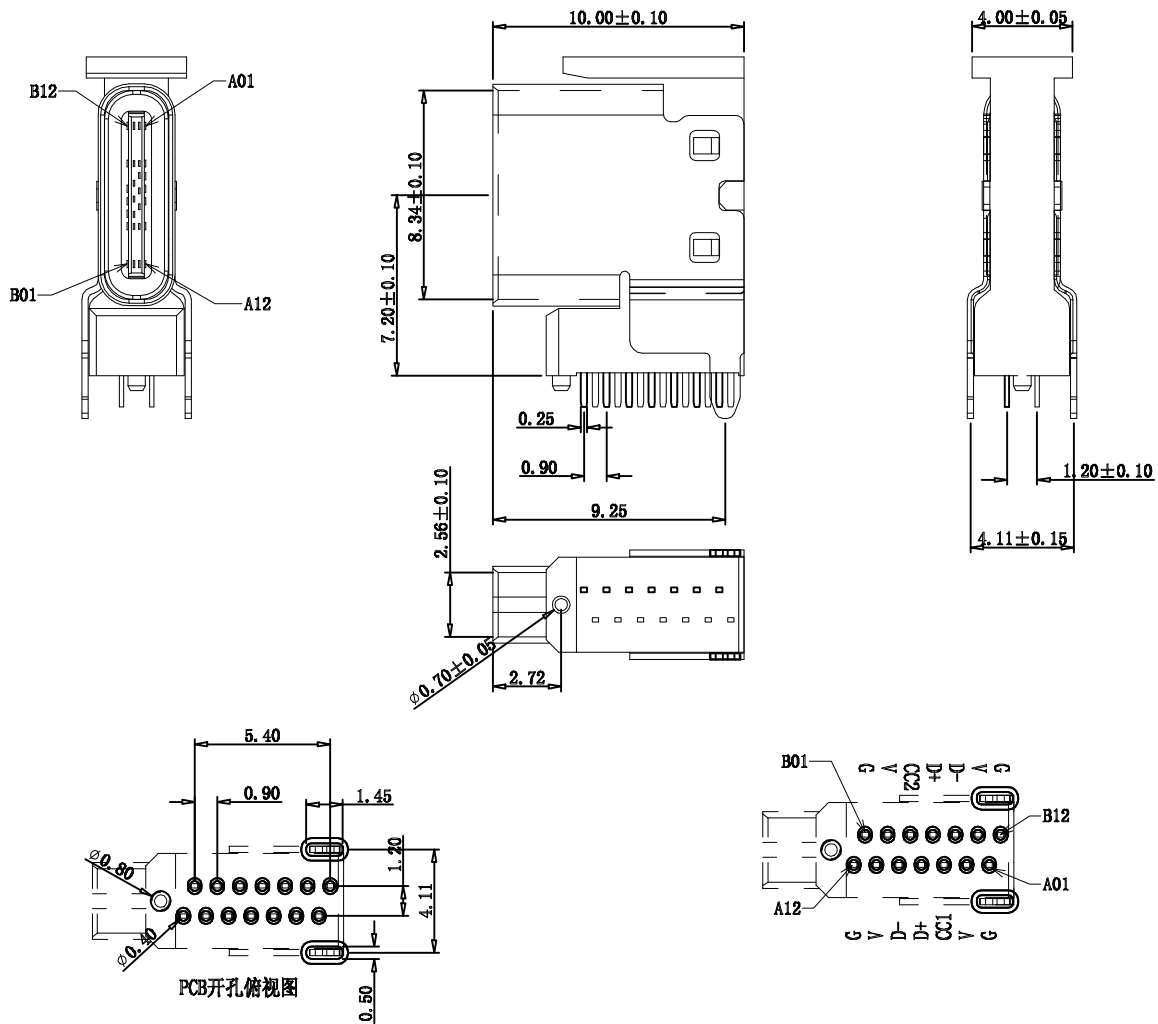
1 2 3 4 5 6 7 8 9 10 11

A

B

F

G



- 产品要求:
- 1. 壳子: a. 不锈钢201 T:0.25mm
b. 电镀镍
 - 2. 端子: a. (C2680)/铜 T:0.18mm
b. 电镀半金锡
 - 3. 卡勾: a. 不锈钢201 T: 0.15mm
 - 5. 塑胶: LCP
 - 6. MECHANICAL:
INSERTION: 5~20N.
EXTRACTION: 8~20N.
DURABILITY: 5000 CYCLES
 - 7. ELECTRICAL:
CURRENT: 3A MIN FOR VBUS;
0.25A MIN FOR OTHER.
VOLTAGE: 5VAC MAX
WITHSTANDING VOLTAGE: 100V AC.
CONTACT RESISTANCE: 40mΩ MAX.
INSULATION RESISTANCE: 100MΩ MIN
 - 8. ENVIRONMENTAL

A1	GND	B12	GND
A4	VBUS	B9	VBUS
A5	CC1		
A6	DP1	B7	DN2
A7	DN1	B6	DP2
		B5	CC2
A9	VBUS	B4	VBUS
A12	GND	B1	GND
PIN	SIGNAL NAME	PIN	SIGNAL NAME

深圳市连欣科技有限公司

APPROVED:					GENERAL TOLERANCES		TITLE:		Type-C 侧插长10.0母座 3A		
CHECKED:					.X: ±0.30		PART NO:		XUBF-0314-0910		
DRAWING:					.XX: ±0.15		DWG NO:				
					.XXX: ±0.005		REV: A0		UNIT: mm		
					ANGEL: ± 3.0°		SCALE: 1:1		SHEET: A4		
					SHEET: 1 OF 1						

LTR	REVISION RECORD			ECN	DRG	DATE					
1	2	3	4	5	6	7	8	9	10	11	