

## SPECIFICATIONS

### Mechanical

**Plug Mating Force:** 4.50kgf (9.92Lb) max

**Plug Unmating Force:** 1.00~4.00kgf (2.21~8.82Lb)

**Durability:** 10000 Cycles

### Electrical

**Current Rating:** 0.50A min

**Contact Resistance:** 30mΩ max. (Initial )

60mΩ max. (After life test )

**Dielectric Withstanding Voltage:** 500V AC RMS

**Insulation Resistance:** Unmated plug:100MΩ min at 500V DC

Mated plug:10MΩ min at 500V DC

### Physical

**Housing:** Thermoplastic, UL 94V-0 rated

**Contact:** Copper alloy

**Plating:** See "ORDERING INFORMATION"

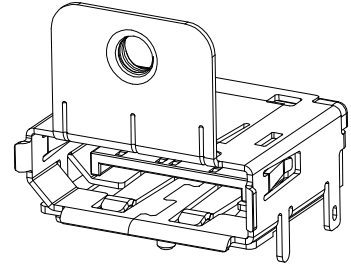
**Operating Temperature:** -40℃ to +85℃

## DisplayPort Connector

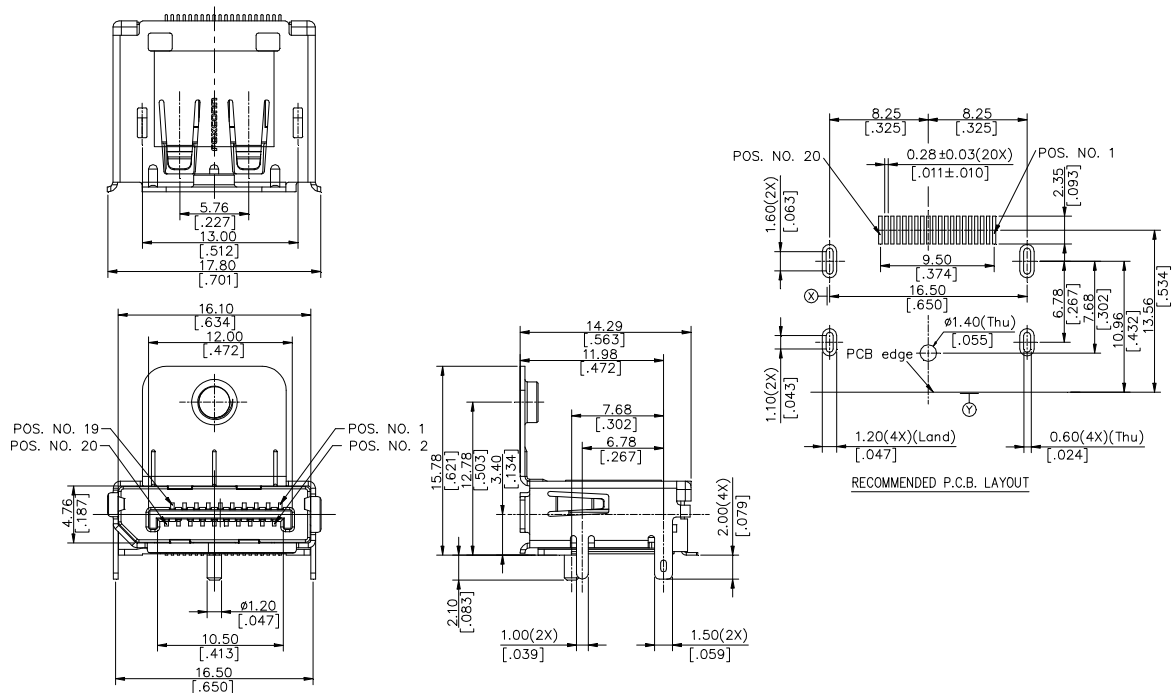
3V Series

DisplayPort, R/A,

SMT Type



## DRAWING



## ORDERING INFORMATION

PRODUCT NO.: 3VD5120\*-M74J-4H

Display port series

Product series

D=Standard type

Termination type

5=R/A SMT

Connector type

1=Receptacle

5. No. of Pos.

20=20 POS

Lead code

H=Halogen-free

Package code

4=Soft tray

Extension code

Contact Area Plating

3=30μ" Gold

7=15μ" Gold