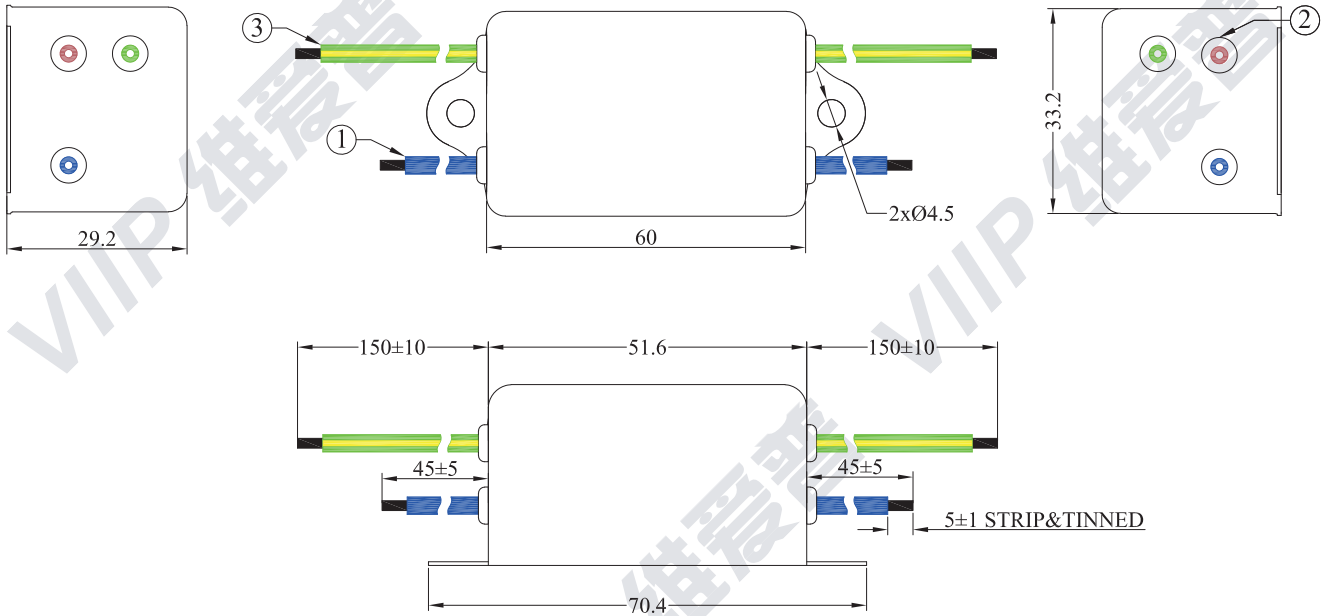


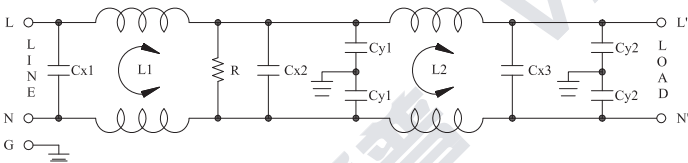
SPECIFICATION

Physical Dimensions(尺寸图):

Unit(单位):mm



Electrical Schematic (电路图)



Minimum Insertion Loss in dB:(AT 50 Ohm System)

在50欧姆系统下，插入损耗值(分贝)

MHz (频率)	0.15	0.5	1	5	10	30
COM.MODE (共模)	52	75	77	71	65	49
DIFF.MODE (差模)	15	77	79	68	66	56

*ABOVE TABLES ARE REFERENCE ONLY. (*以上数据仅供参考)

Characteristics(电气特性):

Voltage Rating(额定电压):115/250VAC

Current Rating(额定电流):3A

Leakage Current(漏电流):LN-G 1.0mA

Temperature Range(温度范围): -25°C~+100°C

Operating Frequency(操作频率): 50/60Hz

Hi-pot(耐压测试)

Line to Ground(线对地端):LN-G 2000VAC

Line to Line(线对线):L-N 500VDC

Safety Approvals(安规认证):



Model.(型号)	Unit(单位)	Rev.(版本)	Dimension Limit(尺寸范围)	Tolerance(公差)
VIP4-2B-03	mm	Rev.4.0	0 ~ 10	±0.3
W0417			10 ~ 100	±0.5
			100 ~ 150	±0.8
			150 ~ 250	±1.0

