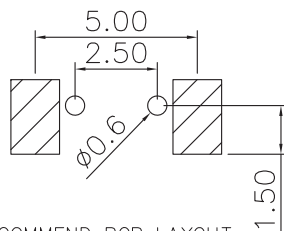
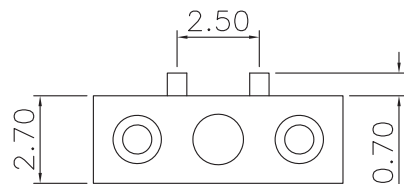
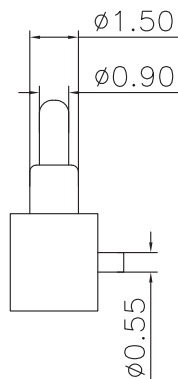
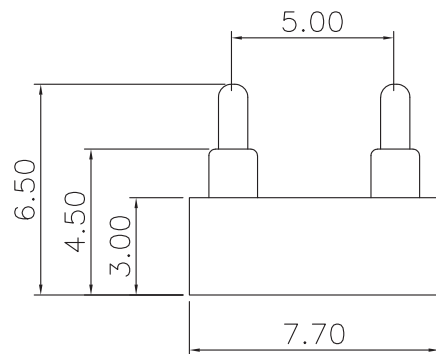


RoHS



RECOMMEND PCB LAYOUT  
Layout Tolerance:  $\pm 0.05\text{mm}$

NOTE

- 1.Material  
Plunger: Brass C3604  
Barrel: Brass C3604  
Spring: SUS304  
Housing: PA46
- 2.Plating  
Plunger: 3 micro-inch minimum Au over 50 micro-inch nickel  
Barrel: 3 micro-inch minimum Au over 50 micro-inch nickel
- 3.Electrical  
Rated current & voltage: DC 12V; 1.0A Max.  
Contact resistance: 50 mohm maximum at normal working height(quiescence)
- 4.Mechanical  
Durability: 5,000 cycles(minimum)
- 5.To ensure the best usage, please operate it based on the working height  
Based on the engineering drawings, shall not exceed the maximum allowed compression
- 6.To avoid arcing issue, The adaptor start to power supply  
after connector mated fully.
- 7.RoHS compliant product.
- 8.SALT SPRAY: 24H

5.0				DRAWING:	GENERAL TOLERANCE .X: $\pm 0.30$ .X*: $\pm 2^\circ$ .XX: $\pm 0.20$ .XX*: $\pm 1^\circ$ .XXX: $\pm 0.10$ .XXX*: $\pm 0.5^\circ$		<b>CHIN-BAN</b> Electroic Technology	
4.0				Frank				
3.0				CHECKED:	UNIT: MM	PROJECTION:	DESCRIPTION: 5.00mm Pitch POGO pin Single Row	
2.0				yang jie				
1.0				APPROVAL:	SCALE: 1/1		SERIES: PG5001 SERIES	REV: 1.0
REV.	DATE	DESCRIPTION	DRAWING		SHEET: 1/1		PART NO: PG5001-02-009P	SIZE: A4