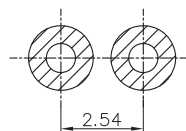
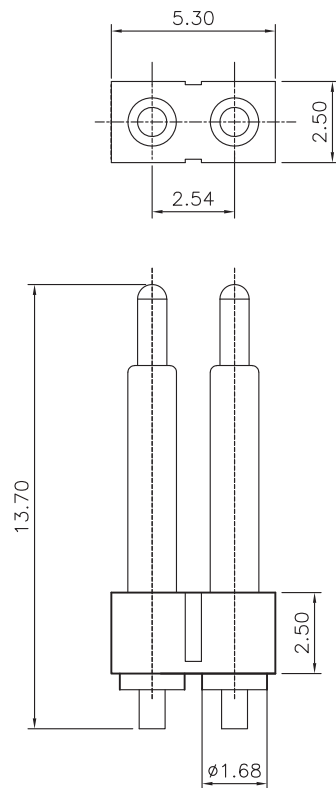
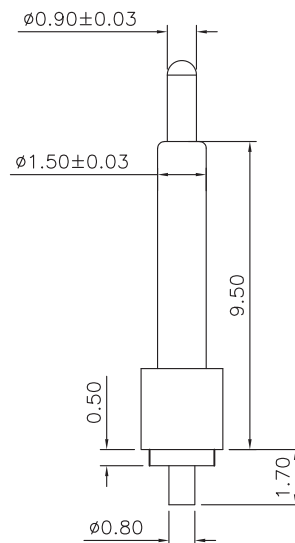


RoHS


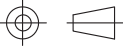


RECOMMEND PCB LAYOUT  
Layout Tolerance:  $\pm 0.05\text{mm}$



#### NOTE

1. Material  
Plunger: Brass C3604  
Barrel: Brass C3604  
Spring: SUS304  
Housing: PA46
2. Plating  
Plunger: 3 micro-inch minimum Au over 50 micro-inch nickel  
Barrel: 3 micro-inch minimum Au over 50 micro-inch nickel
3. Electrical  
Rated current & voltage: DC 12V; 1.0A Max.  
Contact resistance: 50 mohm maximum at normal working height (quiescence)
4. Mechanical  
Spring force: 120g $\pm$ 20g at normal working height (travel 1.0mm)  
Durability: 10,000 cycles (minimum)
5. To ensure the best usage, please operate it based on the working height  
Based on the engineering drawings, shall not exceed the maximum allowed compression
6. To avoid arcing issue, The adaptor start to power supply after connector mated fully.
7. RoHS compliant product.
8. SALT SPRAY: 24H

5.0				DRAWING:	GENERAL TOLERANCE .X:= $\pm 0.30$ .X*:= $\pm 2^\circ$ .XX:= $\pm 0.20$ .XX*:= $\pm 1^\circ$ .XXX:= $\pm 0.10$ .XXX*:= $\pm 0.5^\circ$			
4.0				Frank				
3.0				CHECKED:	UNIT: MM	PROJECTION:	DESCRIPTION: 2.54mm Pitch POGO pin Single Row	
2.0				yang jie				
1.0				APPROVAL:	SCALE: 1/1		SERIES: PG2541 SERIES	REV: 1.0
REV.	DATE	DESCRIPTION	DRAWING		SHEET: 1/1		PART NO: PG2541-02-002P	SIZE: A4