

MESSRS.

SPECIFICATION FOR APPROVAL**承 認 书**

PRODUCT	WATERPROOF TYPE RECEIVER
PART NO.	HDR-150632ZA-6W7 (ROHS)
CUSTOMER	
CUSTOMER PART NO.	M1

APPROVED BY	CHECKED BY	MADE BY
王台平 MAR-28-2020	曹丽萍 MAR-28-2020	LILY MAR-28-2020

常 州 华 龙 电 子 有 限 公 司

Changzhou Dragon State Electronic Co., Ltd

中国江苏省常州市新区电子园新四路 36 号

TEL: +86-519-85110078. 86-519-85106698, FAX: +86-519-85101081

EDITION:1.1

1. Specification

HDR-150632ZA-6W7 (RoHS)

ITEMS.		SPECIFICATIONS
01	Type	Dynamic 15 x 6mm receiver unit
02	Sensitivity (S.P.L)	116dB \pm 3 dB at 1kHz 0.8V
03	Impedance.	32Ohm \pm 15%
04	Resonance Frequency (FO)	950HZ \pm 20% AT FO, 1V
05	Magnet Field Intensity.	Axial – dB , Radial –dB at 1KHz
06	Nominal Input Power	30mW
07	Max. Input Power.	Must be normal at a white noise, 50mW for 1 minute.
08	Total Harmonics Distortion	Max 10 % at 1K Hz.
09	Dustproof And Waterproof	IP68
10	Operation temperature	-30℃ to +70℃
11	Storage temperature	-40℃ to +80℃
12	Weight.	0.3g \pm 5%

2. Measuring method

2-1. Test Condition

Standard

Temperature : 15 ~ 35℃

Relative humidity : 45% ~ 85%,

Atmospheric pressure : 860mbar to 1060mbar.

Judgement

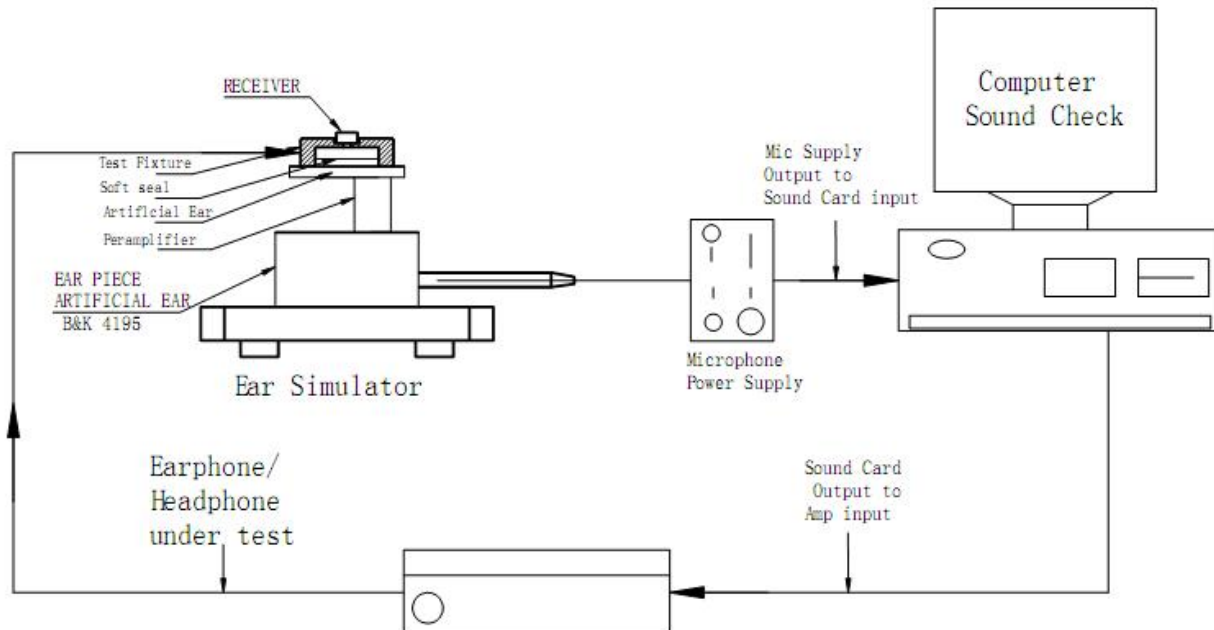
 Temperature : 20 \pm 3℃

Relative humidity : 60% ~ 70%,

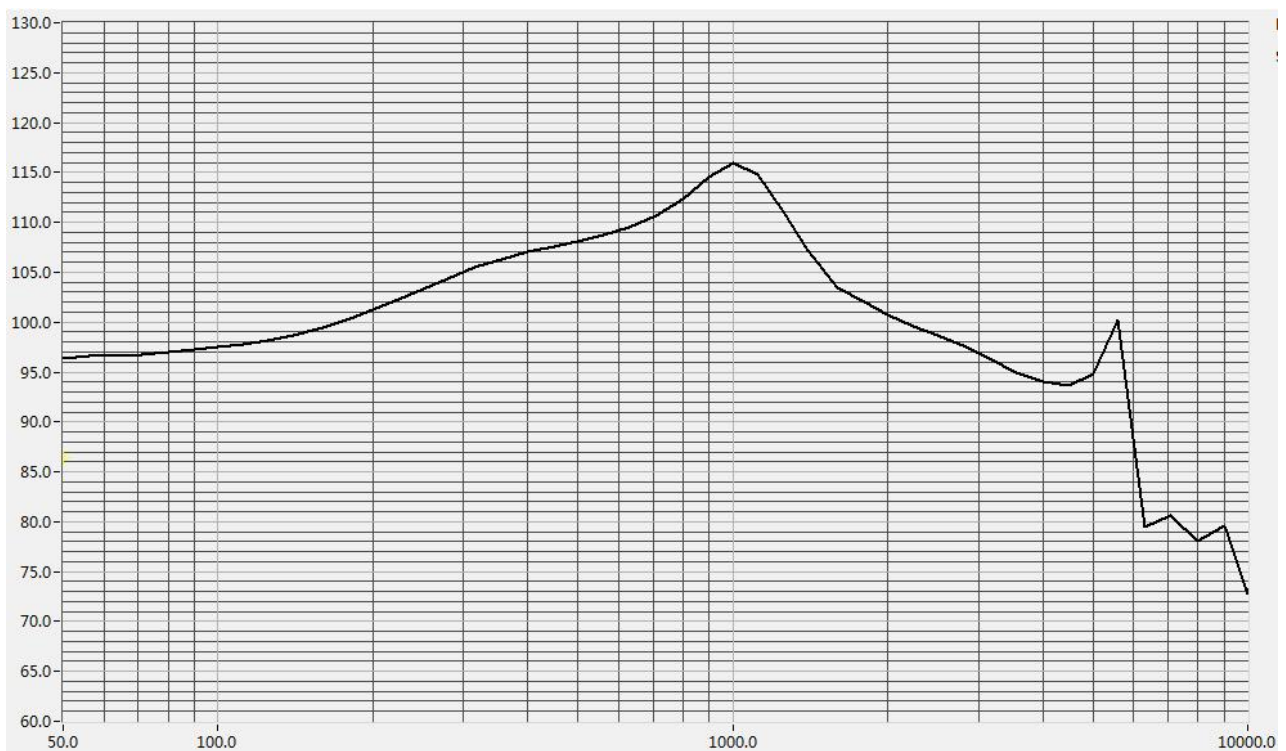
Atmospheric pressure : 860mbar to 1060mbar

2-2. Standard Test Fixture

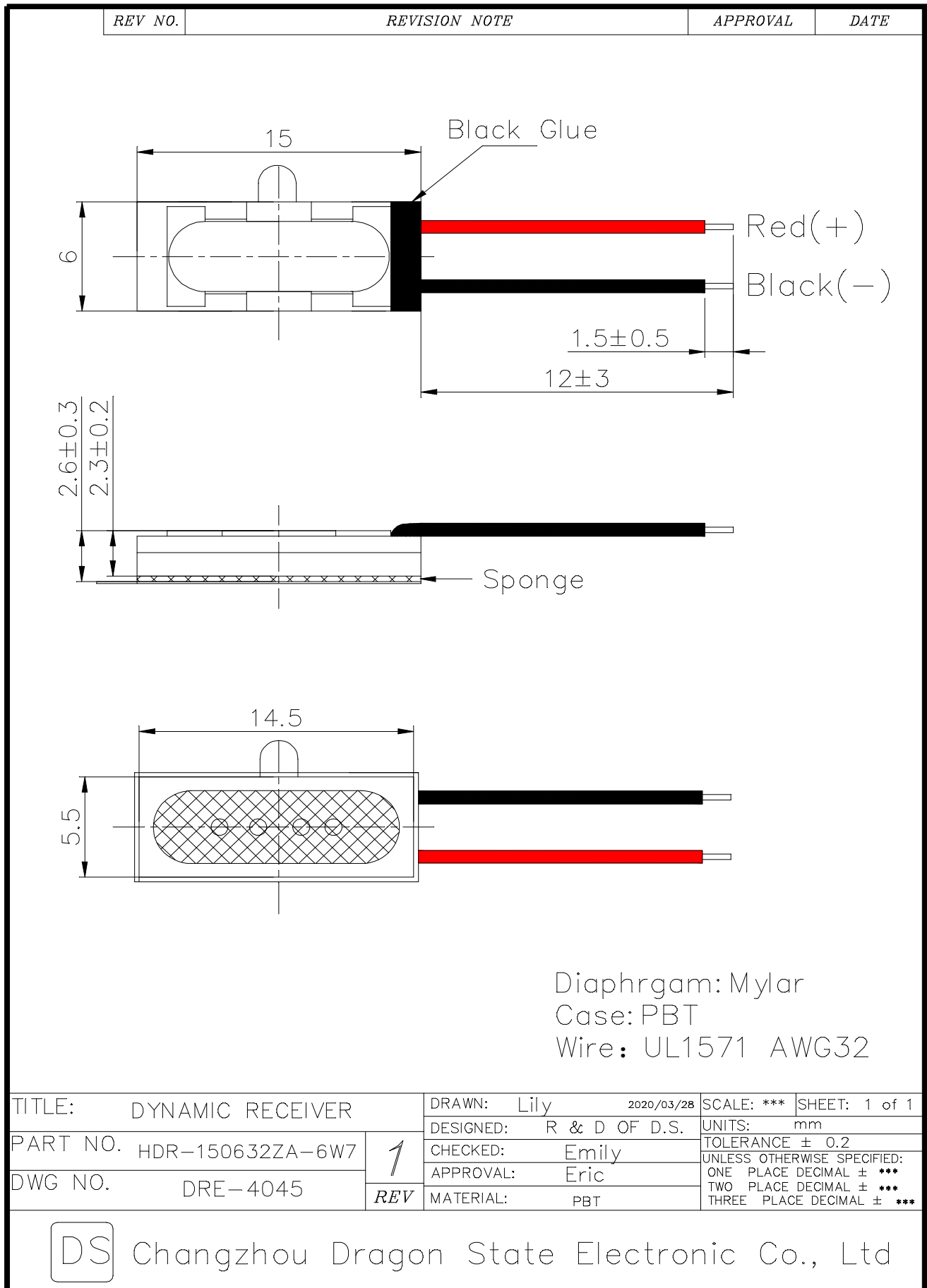
Input signal : 0.8V



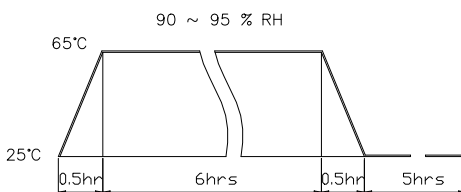
2.3 Frequency Response Curve




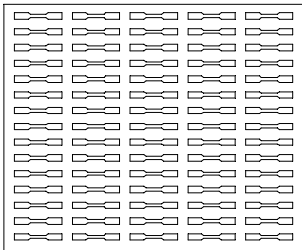
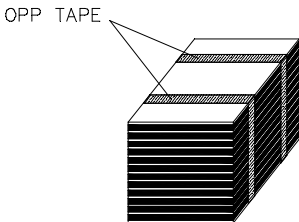
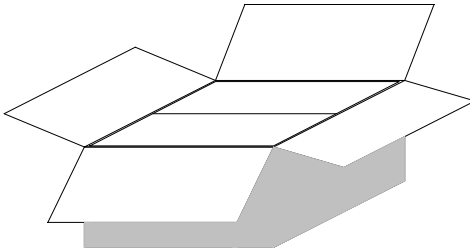
3.Dimension



4. Reliability Test

ITEMS.		SPECIFICATIONS
01	High temp. Test	Keep 96 hours at $+80^{\circ}\text{C} \pm 3^{\circ}\text{C}$ and leave 3 hours in normal temperature and then check
02	Low temp. Test	Keep 96 hours at $-40^{\circ}\text{C} \pm 3^{\circ}\text{C}$ and leave 3 hours in normal temperature and then check
03	Humidity test	Keep 96 hours at $+40^{\circ}\text{C} \pm 3^{\circ}\text{C}$ relative humidity 90% and leave 3 hours in normal temperature and then checked.
04	Temp./humidity cycle	<p>The part shall be subjected 5 cycles. One cycle shall be 12 hours and consist of;</p>  <p>The graph shows a temperature profile over time. It starts at 25°C, rises to 65°C in 0.5 hours, stays at 65°C for 6 hours, and then falls back to 25°C in 0.5 hours. This is followed by a 5-hour dwell at 25°C. The humidity is maintained at 90% ~ 95% RH during the 6-hour high-temperature plateau.</p>
05	Thermal Cycle Test.	Low temperature: $-40^{\circ}\text{C} \pm 3^{\circ}\text{C}$, temperature: $+80^{\circ}\text{C} \pm 3^{\circ}\text{C}$, cycle: 1 hour/cycle each, and then keep 5 cycles in a room.
06	Vibration	10~200~10Hz Sin-Wave Sweep 15min. 5G(Constant) X,Y, Z 3 direction. 2 hours each, total 6 hours.
07	Fix Drop test	Fix on Jig. then drop from 152cm height to the concrete floor X,Y, Z 6 direction. 5 times each, total 30 times.
08	Free Drop test	Free drop from 100cm height to the concrete floor X,y, z 6 direction. 1 times each, total 6 times.
09	Load test	Rated power pink noise is applied for 96 hours
10	Protection against liquids	Protected against 1hour of immersion under 2m pressure
11	Max Power test	Max Power 1 min on – 2 min off 10 cycles.

5.Packing

REV NO.	REVISION NOTE	APPROVAL	DATE
	<div style="text-align: center;">  </div> <div style="text-align: right; margin-top: 10px;"> Cover(285*235*5mm) Material: Paper </div>		
	<div style="text-align: center;">  </div> <div style="text-align: right; margin-top: 10px;"> Box(285*230*10mm) 150pcs Material: Paper+Epe </div>		
	<div style="text-align: center;">  </div> <div style="text-align: right; margin-top: 10px;"> Middle(285*230*120mm) 1500pcs(10*150pcs) Material: Paper+Epe </div>		
	<div style="text-align: center;">  </div> <div style="text-align: right; margin-top: 10px;"> Outer Box(490*360*350mm) 9000pcs(6*1500pcs) Material: Paper </div>		
单位: mm			
TITLE: packing		DRAWN: Lily 2013/12/06	
PART NO.		DESIGNED: R&D OF D.S.	
DWG NO.		CHECKED: Emily	
<div style="font-size: 2em; font-weight: bold;">1</div>		APPROVAL: Eric	
		MATERIAL: ***	
		SCALE: 2:1	SHEET: 1 of 1
		UNITS: mm	
		TOLERANCE	
		20~11	± 0.3
		10~5	± 0.2
		<4	± 0.1
<div style="display: inline-block; border: 1px solid black; padding: 5px; margin-right: 10px;">DS</div> Changzhou Dragon State Electronic Co., Ltd			