

MESSRS.

SPECIFICATION FOR APPROVAL**承 認 书**

PRODUCT	WATERPROOF TYPE RECEIVER
PART NO.	HDR-120632RA-2W (ROHS)
CUSTOMER	
CUSTOMER PART NO.	

APPROVED BY	CHECKED BY	MADE BY
王台平 DEC-01-2015	曹丽萍 DEC-01-2015	LILY DEC-01-2015

常 州 华 龙 电 子 有 限 公 司*Changzhou Dragon State Electronic Co., Ltd*

中国江苏省常州市新区电子园新四路 36 号

TEL: +86-519-85110078 . 86-519-85106698, FAX: +86-519-85101081**EDITION:1.1**

1. Specification

HDR-120632RA-2W (RoHS)

ITEMS.		SPECIFICATIONS
01	Type	Dynamic 12 x 6mm receiver unit
02	Sensitivity (S.P.L)	115dB \pm 3 dB at 1kHz 180mV with IEC 318 coupler
03	Impedance.	32 Ohm \pm 15% at 1KHz
04	Magnet Field Intensity.	Axial – dB , Radial –dB at 1KHz
05	Nominal Input Power	20mW
06	Max. Input Power.	Must be normal at a white noise , 30mW for 1 minute.
07	Total Harmonics Distortion	Max 10 % at 1K Hz.
08	Dustproof And Waterproof	IP67
09	Operation temperature	-30℃ to +70℃
10	Storage temperature	-40℃ to +80℃
11	Weight.	0.5g \pm 5%

2. Measuring Method

2-1. Test Condition

Standard

Temperature : 15 ~ 35℃

Relative humidity : 45% ~ 85%,

Atmospheric pressure : 860mbar to 1060mbar.

Judgement

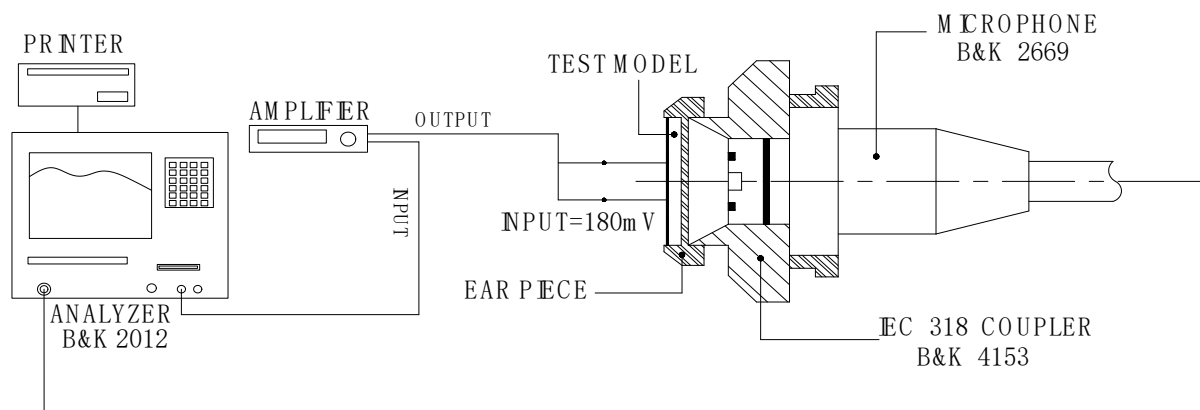
Temperature : 20 \pm 3℃

Relative humidity : 60% ~ 70%,

Atmospheric pressure : 860mbar to 1060mbar

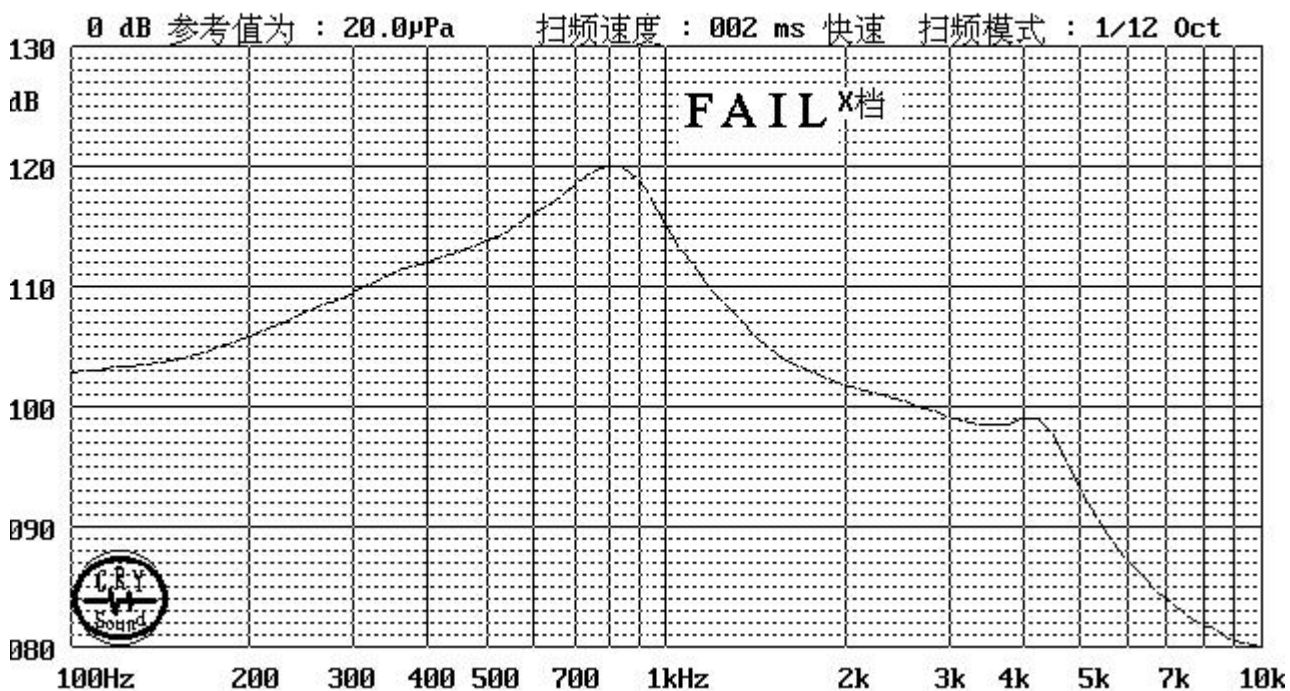
2-2. Standard Test Fixture

Input signal : 180mV

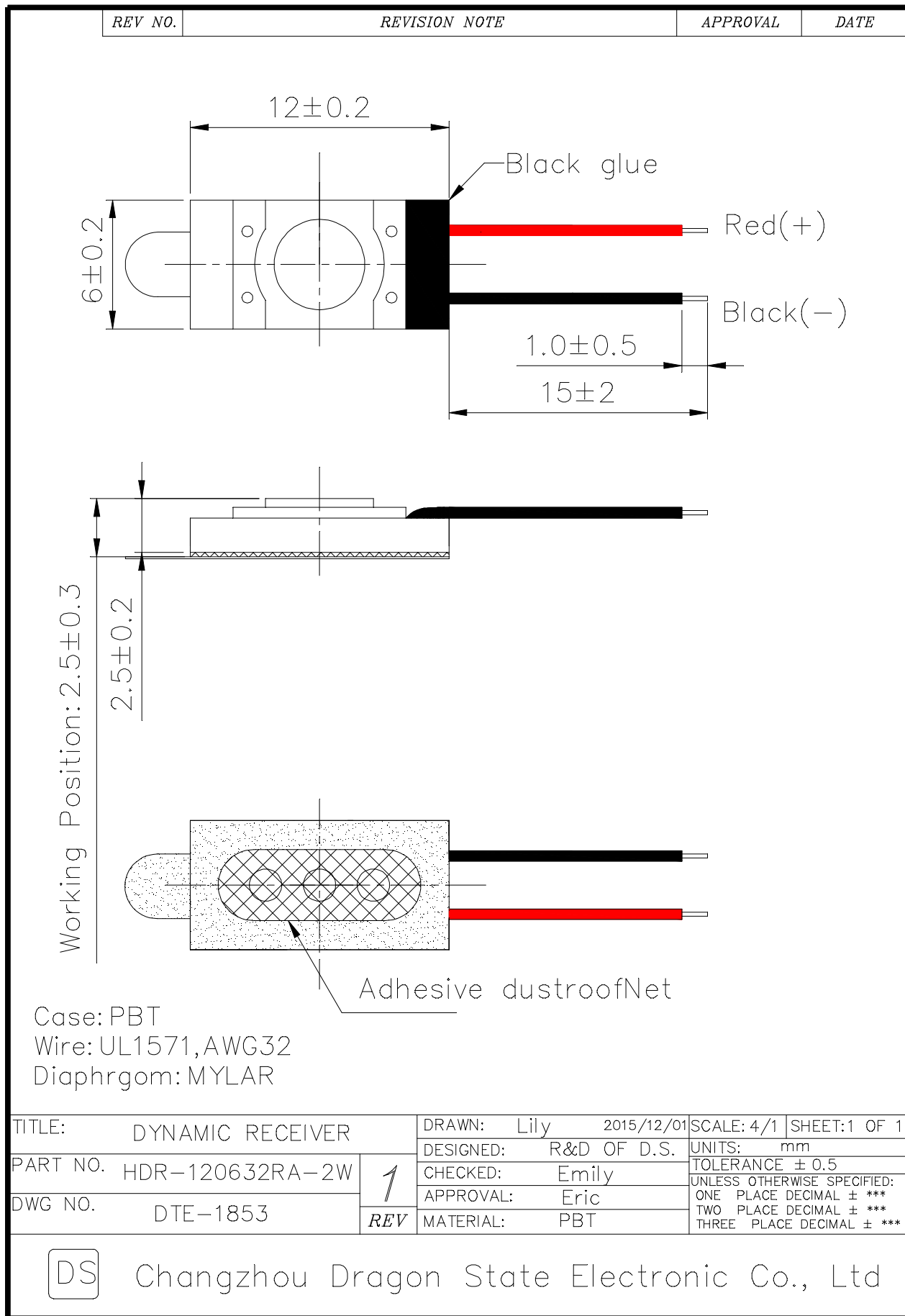


2.3 Frequency Response Curve

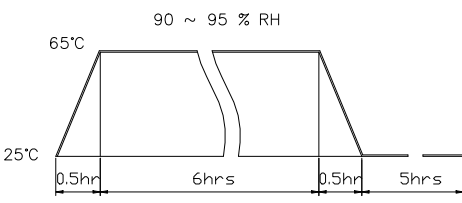
型号: _____ → 1000Hz灵敏度 : 115.11 dB 1000Hz阻抗 : _____ Ω 滤波器无
电压: 0180 mV 70Hz灵敏度 : _____ dB Fv= 1200 Hz : -002.07 dB 无框
2000Hz灵敏度 : 101.75 dB 4000Hz灵敏度 : 098.93 dB



3.Dimension



4. Reliability Test


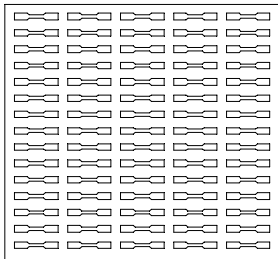
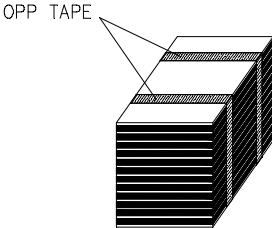
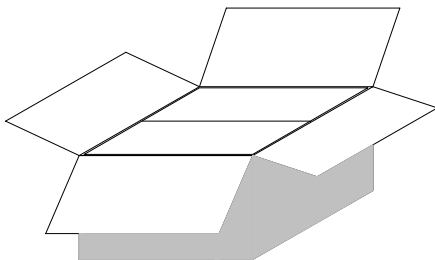
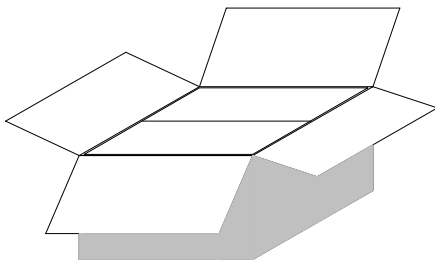
ITEMS.		SPECIFICATIONS
01	High temp. Test	Keep 96 hours at $+70^{\circ}\text{C} \pm 3^{\circ}\text{C}$ and leave 3 hours in normal temperature and then check
02	Low temp. Test	Keep 96 hours at $-20^{\circ}\text{C} \pm 3^{\circ}\text{C}$ and leave 3 hours in normal temperature and then check
03	Humidity test	Keep 96 hours at $+40^{\circ}\text{C} \pm 3^{\circ}\text{C}$ relative humidity 90% and leave 3 hours in normal temperature and then checked.
04	Temp./humidity cycle	<p>The part shall be subjected 5 cycles. One cycle shall be 12 hours and consist of;</p>  <p>The graph shows a temperature profile over time. It starts at 25°C, ramps up to 65°C in 0.5 hours, holds at 65°C for 6 hours, and then ramps down to 25°C in 0.5 hours. This cycle is repeated. Above the 65°C plateau, the relative humidity is specified as 90 ~ 95 % RH. The total duration of the cycle is 7 hours (0.5 + 6 + 0.5). A 5-hour period follows the cycle.</p>
05	Thermal Cycle Test.	Low temperature: $-40^{\circ}\text{C} \pm 3^{\circ}\text{C}$, temperature: $+70^{\circ}\text{C} \pm 3^{\circ}\text{C}$, cycle: 1 hour/cycle each, and then keep 5 cycles in a room.
06	Vibration	10~200~10Hz Sin-Wave Sweep 15min. 5G(Constant) X,Y, Z 3 direction. 2 hours each, total 6 hours.
07	Fix Drop test	Fix on Jig. then drop from 152cm height to the concrete floor X,Y, Z 6 direction. 5 times each, total 30 times.
08	Free Drop test	Free drop from 100cm height to the concrete floor X,y, z 6 direction. 1 times each, total 6 times.
09	Load test	Rated power white noise is applied for 96 hours
10	Protection against liquids	Protected against 30 Minutes of immersion under 1M pressure Product without leakage
11	Max Power test	Max Power 1 min on – 2 min off 10 cycles.

Soldering Condition

Recommend using constant branding iron in **30W**, and in temperature range **$350 \pm 10^{\circ}\text{C}$** .

Soldering time **2** seconds.

5.Packing

REV NO.	REVISION NOTE	APPROVAL	DATE
<div style="display: flex; justify-content: space-between; align-items: flex-start;"> <div style="text-align: center;">  <p>Cover(285*235*5mm) Material: Paper</p> </div> <div style="text-align: center;">↓</div> <div style="text-align: center;">  <p>Box(285*230*10mm) 150pcs Material: Paper+Epe</p> </div> </div> <div style="display: flex; justify-content: space-between; align-items: flex-start; margin-top: 20px;"> <div style="text-align: center;">  <p>OPP TAPE</p> </div> <div style="text-align: center;">↓</div> <div style="text-align: center;">  <p>Middle(285*230*120mm) 1500pcs(10*150pcs) Material: Paper+Epe</p> </div> </div> <div style="display: flex; justify-content: space-between; align-items: flex-start; margin-top: 20px;"> <div style="text-align: center;">  <p>Outer Box(490*360*350mm) 9000pcs(6*1500pcs) Material: Paper</p> </div> </div> <p style="text-align: right; margin-top: 20px;">单位: mm</p>			
TITLE: packing		DRAWN: Lily 2013/12/06	
PART NO.		DESIGNED: R&D OF D.S.	
DWG NO.		CHECKED: Emily	
<div style="border: 1px solid black; width: 30px; height: 30px; display: flex; align-items: center; justify-content: center; margin: 0 auto;">1</div>		APPROVAL: Eric	
		MATERIAL: ***	
		SCALE: 2:1	
		SHEET: 1 of 1	
		UNITS: mm	
		TOLERANCE	
		20~11 ± 0.3	
		10~5 ± 0.2	
		<4 ± 0.1	

DS

Changzhou Dragon State Electronic Co., Ltd