

MSCP74-330MT

Wire Wound SMD Coupled Power Inductor

FEATURES

- High efficiency, high coupling
- High rated current, low DC resistance
- Operate temperature range $-40^{\circ}\text{C} \sim +125^{\circ}\text{C}$ (Including self temp. rise)
- RoHS compliant

APPLICATIONS

- SEPIC, Zeta, Flyback topology, etc.
- LED, power supplies
- Used as common mode choke
- Used as transformer
- Widely used in buck converter, laptop, displayer, network communication equipment, and etc.



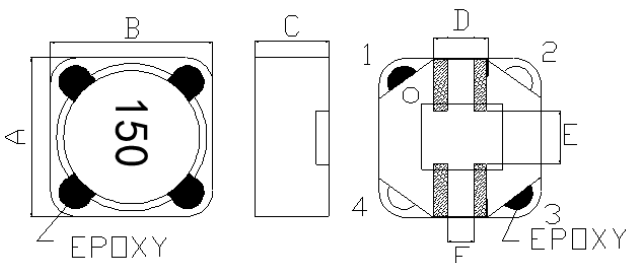
Explanation of Part Number

MSCP 74 -101 M T

1 2 3 4 5

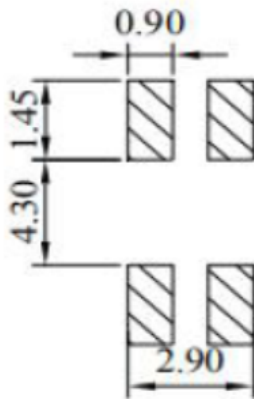
- ◆ 1:Product Series:Wire Wound SMD Coupled Power Inductors
- ◆ 2:Dimensions:
- ◆ 3: Nominal Inductance: 101 = 100uH
- ◆ 4:Inductance Tolerance:M:+/-20%
- ◆ 5.Packing:Tape Carrier Package

Dimensions: [mm]

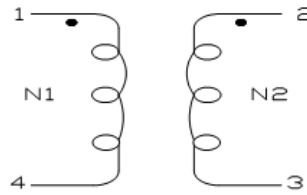


ITEM	A	B	C	D	E	F
DIM	7.3	7.3	4.8	2.6	2.9	1.1
TOLE	± 0.3	± 0.3	Max	Typ	Typ	Typ

Land Pattern: [mm]



SCHEMATIC:

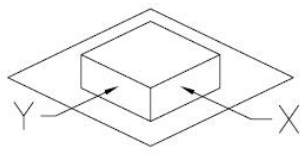


Electrical Properties:

Part Number	Inductance L1=L2 (uH) @100KHz/0.1V	DC Resistance L1=L2 (mΩ) Max.	Isat1 L1=L2 (A)Max.	Marking
MSCP74-330MT	33 ±20%	500	1.5	330

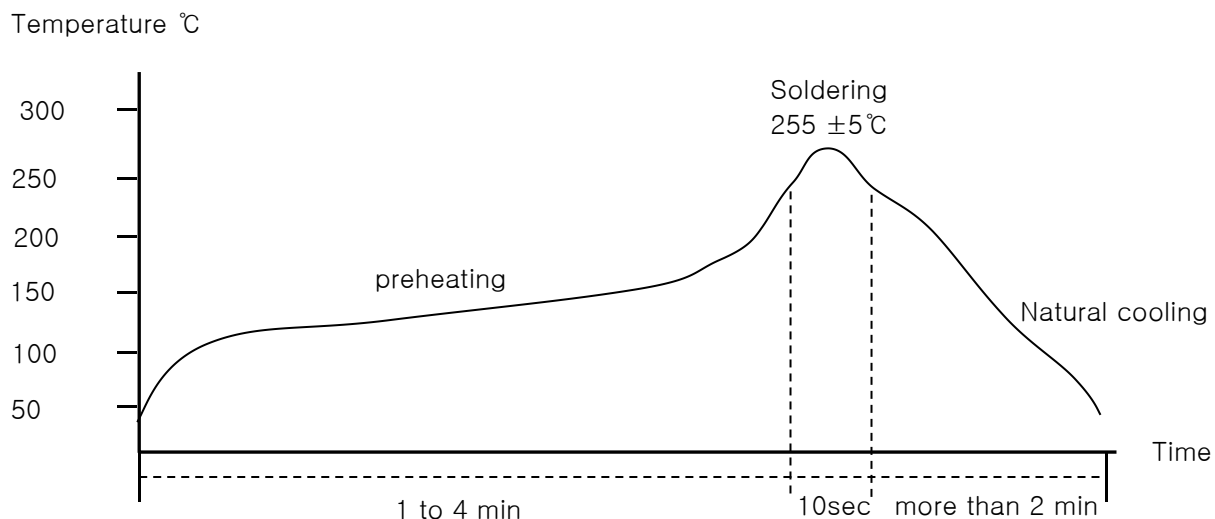
Isat: Base on temp.rise & $\Delta L/L0A \leq 30\%$ Max

RELIABILITY TESTING

Operating Temperature	- 40 to +125 °C (Contain Heating coil)
Appearance Inspection	No external defects by visual inspection
Terminal Strength 	After soldering , between copper plaet and terminals of coils , push in two directions of X , Y with standing 10N(1.02kg) for10+/-2 sec. Terminal should not peel off. (Refer to figure at right)
Heat endurance of reflow soldering	Refer to figure
Insulating resistance	Over 100 MΩ at 100V D.C . between wire and core
Dielectric Strength	Apply at 0.5KV 3mA for 1 minute between wire and core
Temperature characteristics	Inductance coefficient (0~2,000) × 10 / °C (- 40~ + 125 °C)
Humidity characteristics	Inductance deviation within ± 10% , after 96 hours in 90~95% relative humidity at 40 ± 2 °C and 1 hours drying under normal condition

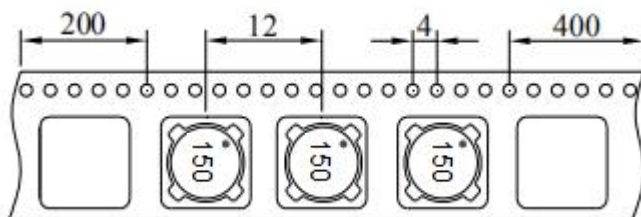
A test is made under the above mentioned condition , and it is kept for 2 hours in the normal

IR Reflow profile

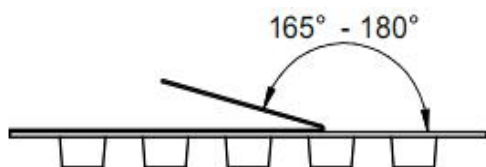


Temperature and humidity . After that , no mechanical and electrical defect should be found .

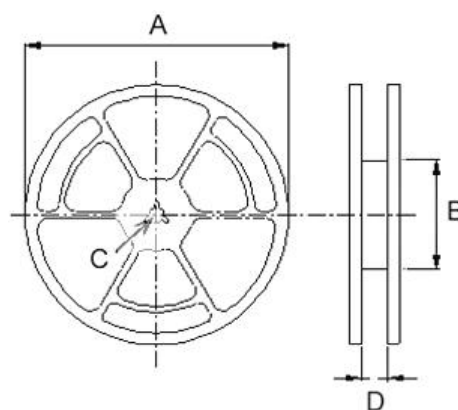
PACKING LIST



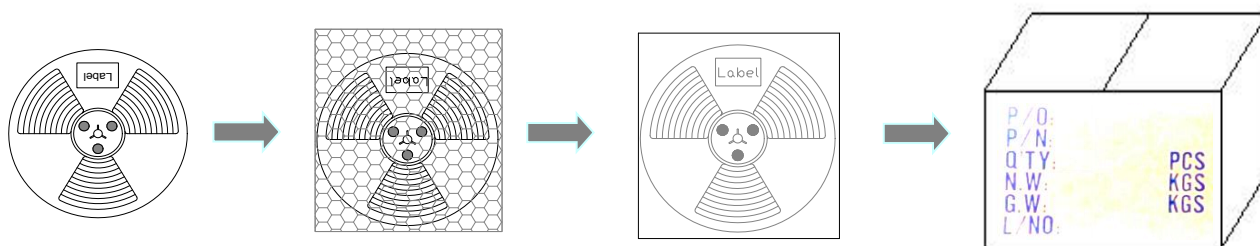
Tape width	Distance	Pull-of force
16 mm	12 mm	20~120g



Reel Dimensions (Unit: mm)				Quantity
A	B	C	D	Pcs/Reel
330	100	13	16.5	1000



裝箱數量:
Package Quantity



Series	MPQ	Inner box	full container load
74	1000	3000	15000