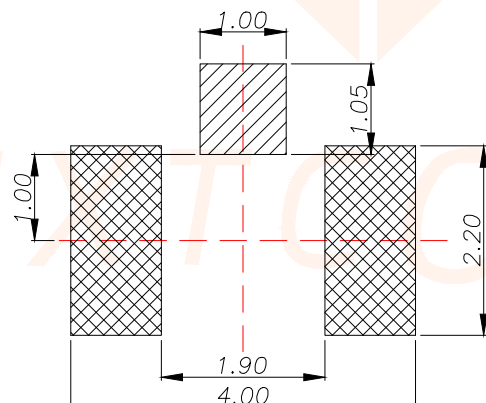
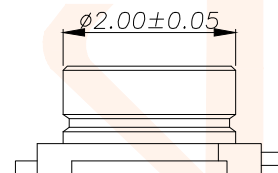
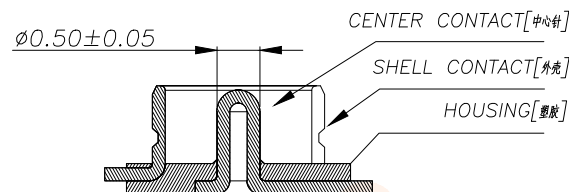
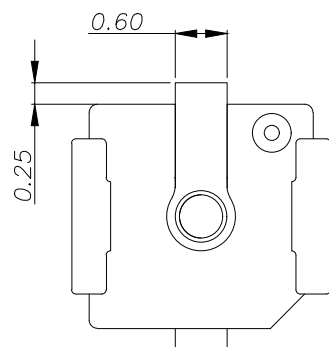
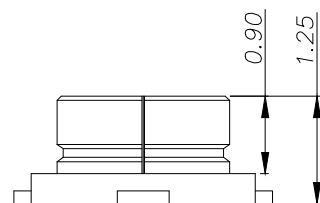
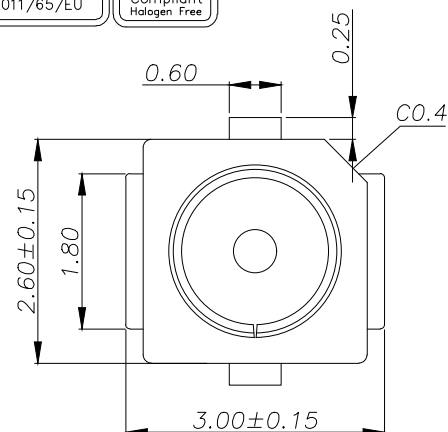




REV.	ECN NO.	DESCRIPTION	DATE	DESIGN



RECOMMENDED PCB LAYOUT
(TOLERANCE:±0.05)

 CENTER CONTACT
 GROUND CONTACT

NOTES

1.0. RATING(额定值)

1.1. VOITAGE(电压):60 VAC(R.M.S.)

1.2. NOMINAL CHARACTERISTIC IMPEDANCE(特性阻抗):50 Ohm

1.3. APPLICABLE FREQUENCY(适用频率):DC~6GHz

1.4. VSWR(电压驻波比):1.3 MAX.(DC~3GHz), 1.5 MAX.(3~6GHz)

1.5. TEMPERATURE(适用温度):-40'C TO +85°C

1.6.1.6:APPLIED TO IR SOLDERING PROCESS(适用回流焊接方式)

2.0.MATERIAL SEE BILL OF MATERIAL (材料清单):

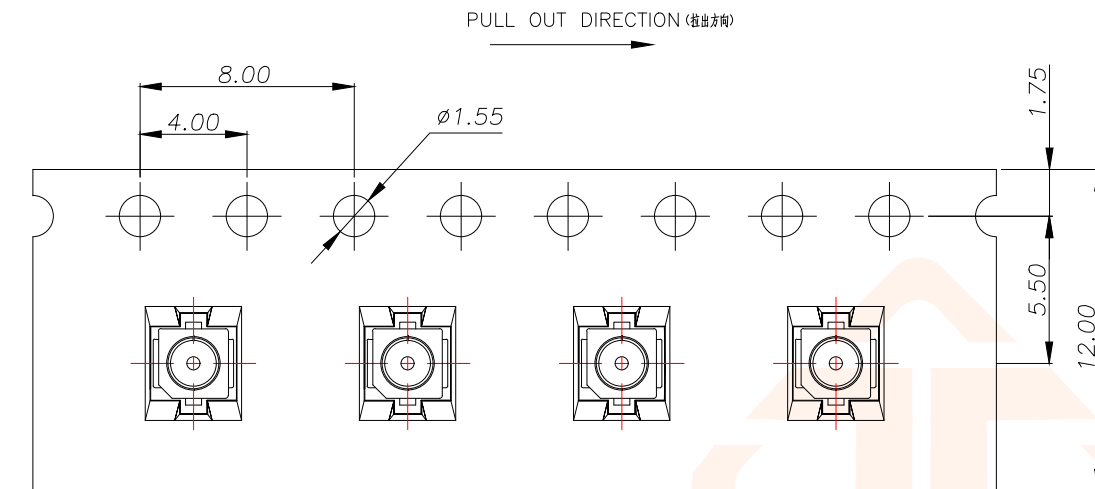
2.1.HOUSING (塑胶):THERMOPLASTIC
LCP,UL94V-0(LCPUL94V-0)

2.2.CENTER CONTACT:COPPER ALLOY C5191

2.3.SHELL CONTACT(外壳):COPPER ALLOY C5191(铜合金 C5191)

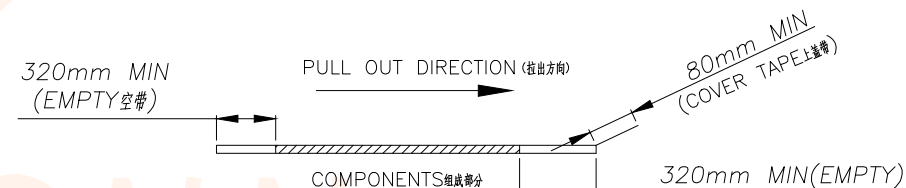
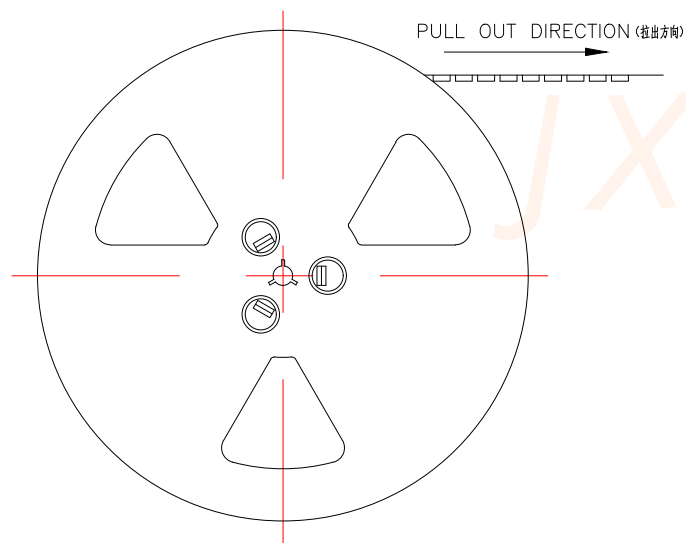
TOLERANCE		<div> 深圳聚兴泰电子科技有限公司</div> <div>Shenzhen Juxingtai Electronic Technology Co., Ltd</div>				
X.X:±0.15	X.:±2°	PART NO. AIPEX-1	TITLE: MICRO RF I BAORD SMT 3 PADS TYPE			
X.XX:±0.05	X.X':±1°					
X.XXX:±0.05						
UNITS	mm	DESIGN:	Ethan	MANUFACTURE DWG		
MATERILA	— — —	CHED:	Olvia			
FINISH	— — —	APPD:	Ava		SCALE N:A	SHEET 1/1

REV.	ECN NO.	DESCRIPTION	DATE	DESIGN



NOTES(备注):

- MATERIAL(材料):
 - EMBOSSED CARRIER(载带): PET
 - COVER TAPE(盖带): PET
 - REEL(卷盘): PS
 - SHIPPING CARTON(包装箱): CORRUGATED FIBER(多层瓦楞纸)
- DIMENSION(尺寸):
 - REEL(卷盘): W=12.5
 - SHIPPING CARTON(包装箱): L=350, W=350, H=190
- QUANTITY(数量):
 - PRIMARY PACKING(基本包装): 5000PCS/REEL
 - CRITERION PACKING(标准包装): 10REELS/CARTON(10卷/箱50000PCS)
- WEIGHT(重量):
 - NET WEIGHT(净重): 0.50KG/REEL.
 - GROSS WEIGHT(总重): 0.50KG/REEL, 5.5KG/CARTON.
- PEELING RESISTANCE(盖带剥离力): 10gf~130gf.



TOLERANCE		<div> 深圳聚兴泰电子科技有限公司</div> <div>Shenzhen Juxingtai Electronic Technology Co., Ltd</div>			
X.X:±0.15	X.°:±2°	PART NO. AIPEX-1	TITLE: MICRO RF 1 BAORD SMT 3 PADS TYPE		
X.XX:±0.05	X.X°:±1°				
X.XXX:±0.05					
UNITS	mm	DESIGN: Ethan	MANUFACTURE DWG		
MATERILA	— — —	CHED: Olvia			
FINISH	— — —	APPD: Ava			
				SCALE N:A	SHEET 1/1

REV.	ECN NO.	DESCRIPTION	DATE	DESIGN

品名 NAME: _____

料号 PART No.: _____

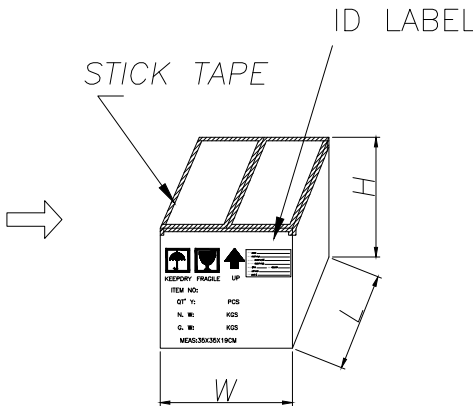
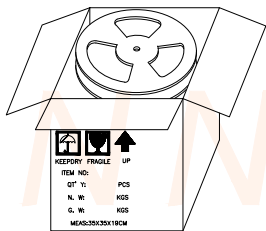
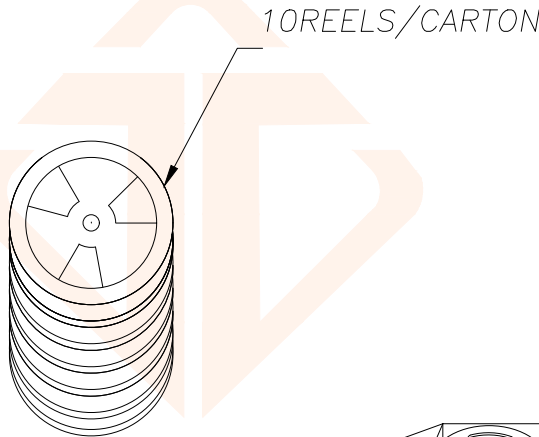
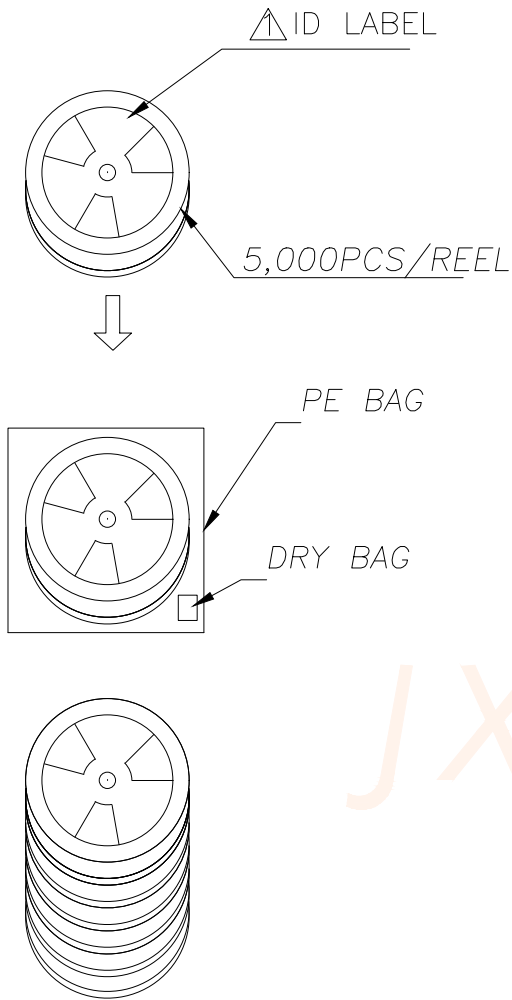
客户料号 CLIENT P/N: _____


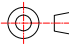
客户订单 CLIENT PO#: _____

数量 Q'TY: _____ 重量 WEIGHT: _____

批次 LOT No.: _____

日期 DATE : _____



TOLERANCE		 深圳聚兴泰电子科技有限公司 Shenzhen Juxingtai Electronic Technology Co., Ltd		
X.X:±0.15	X.*:±2*	PART NO. AIPEX-1	TITLE: MICRO RF I BAORD SMT 3 PADS TYPE	
X.XX:±0.05	X.X*:±1*			
X.XXX:±0.05				
UNITS	mm	DESIGN: Ethan	MANUFACTURE DWG	
MATERILA	— — —	CHED: Olvia		
FINISH	— — —	APPD: Ava		
				SCALE N:A
				SHEET 1/1