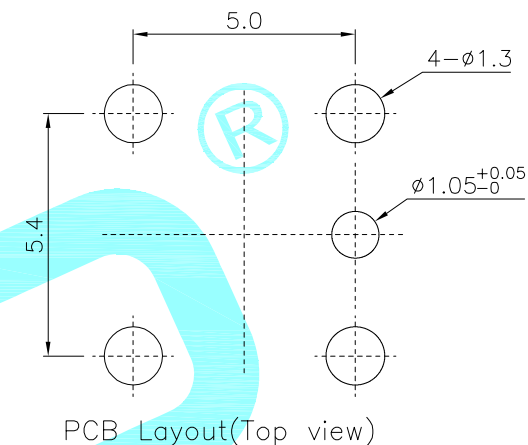
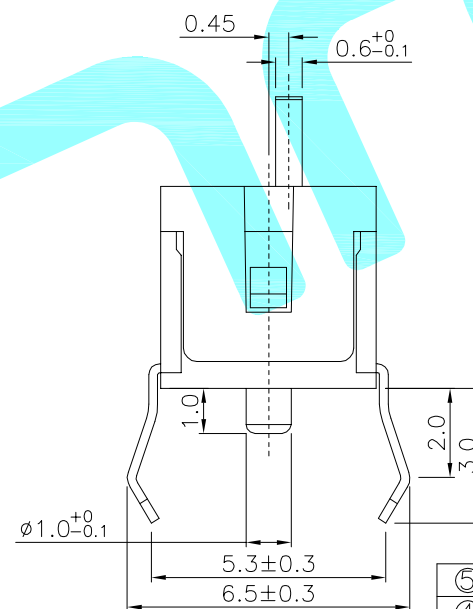
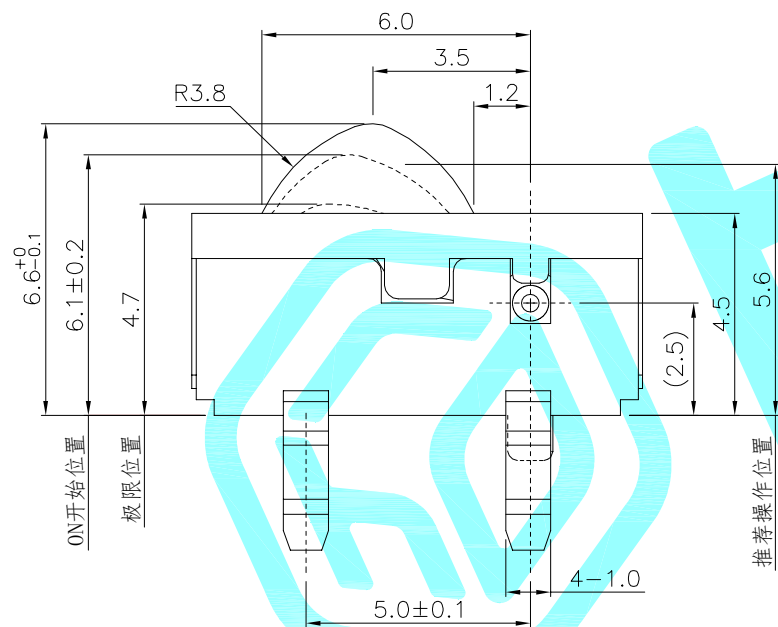


Circuit Diagram





PCB Layout(Top view)



NOTE:
Rating: DC 12V 0.1A
Operating Force: $\leq 31\text{gf}$
Lifetime: 50,000 Cycles

⑤	Contact Spring	—	1	Phosphor bronze	Ag Plated	—
④	Terminal	—	4	Brass	Ag Plated	—
③	Housing	—	1	PA	Black	—
②	Cover	—	1	PA	Black	—
①	Slider	—	1	PA	White	—
ITEM	PART NAME	TER'NO.	QTY.	MATERIAL	FINISHING	REMARK

APPROVALS			DATE				
DRAWN		LIUCAN	2022.5.16				
CHECKED				TITLE:		DETECTOR SWITCHS	
APPROVALS				PART NO.		K5-1631DA-02	
TOLERANCES ARE	30~以上	±0.30	ANGLE	UNIT: mm	SCALE: 1:1	PROJ: 	
	10~30	±0.20					
	5~10	±0.15					
	~ 5	±0.10					
			±2'	DRAWING NO.	_____	SHEET 1 OF 1	

ECN NO.	REV.	DATE.	DESCRIPTION.	CHANGE.	CHECK.	APPRO.
	A		NEW			