

借(通)用件登記

描 图

描	校
---	---

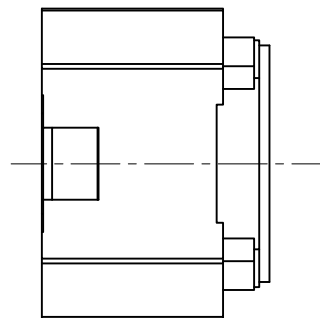
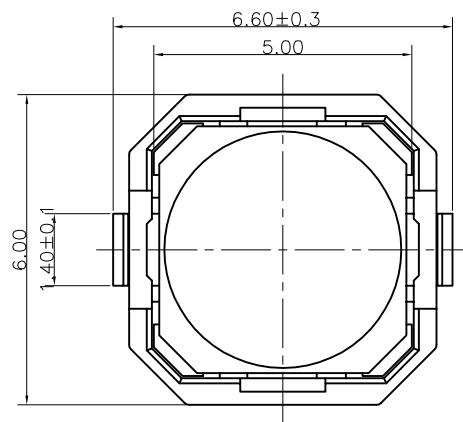
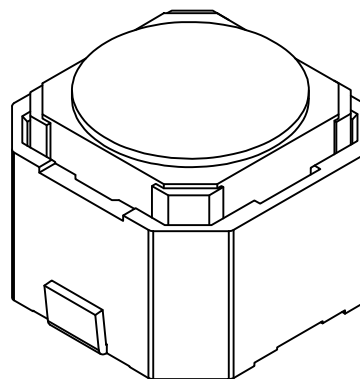
旧底图总号

底图总号

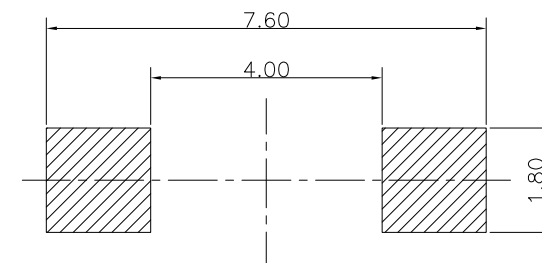
签 字

日期

Technical drawing of a mechanical part, likely a piston, showing dimensions and tolerances. The drawing includes a central vertical axis labeled "Travel" with a tolerance of $0.8 \pm 0.2 \text{ mm}$. Key dimensions are: total height $4.30(H) \pm 0.2$, main body height 3.50 , and a small feature height 1.10 . A fillet radius is indicated as $R=0.20$. Two callouts, 1 and 2, point to specific features on the side of the part.



the following soldering are recommended
for reflow soldering



NO	项 目	参 数
1	额定电流	50mA 12V DC
2	接触电阻	$\leq 100\text{m}\Omega$
3	按 力	$230 \pm 50\text{gf}$
4	行 程	$0.8 \pm 0.2\text{mm}$
5	绝缘电阻	$\geq 100\text{M}\Omega$
6	抗电强度	AC 250V 50Hz 1Min
7	寿 命	100,000 cyc

技有限公司					轻 触 开 关 TACT SWITCH
				产品型号	
-12	单 位	比 例	视 图	规格描述	海绵开关
-12	mm	1:1			4. 3H/U脚/蓝硅胶
-12	版 本	A/0			物料编码