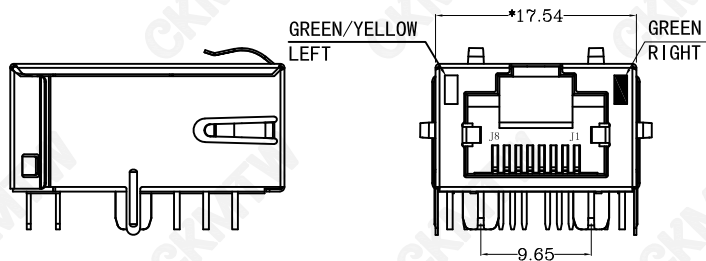
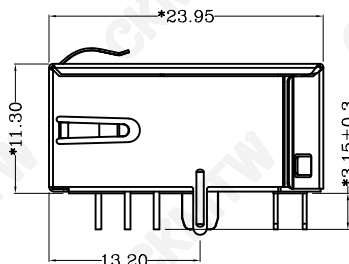


TOP VIEW

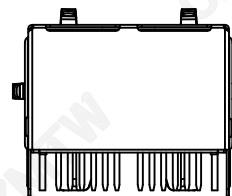


LEFT SIDE VIEW

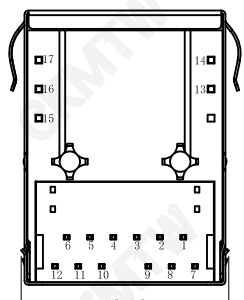
FRONT VIEW



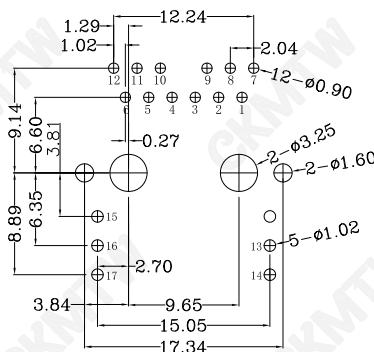
RIGHT SIDE VIEW



BACK VIEW



BOTTOM VIEW



RECOMMENDED PCB LAYOUT VIEWED FROM COMPONENT SIDE

**MATERIAL:**

HOUSING: LCP,UL94V-0,BLACK.  
 TERMINALS BRACKET: LCP,UL94V-0,BLACK.  
 SHIELD: C2680,T=0.20MM,NICKEL PLATING ON ALL AREA.  
 TERMINAL: PHOSPHOR BRONZE C5191,T=0.35MM,  
 GOLD PLATING ON CONTACT AREA.

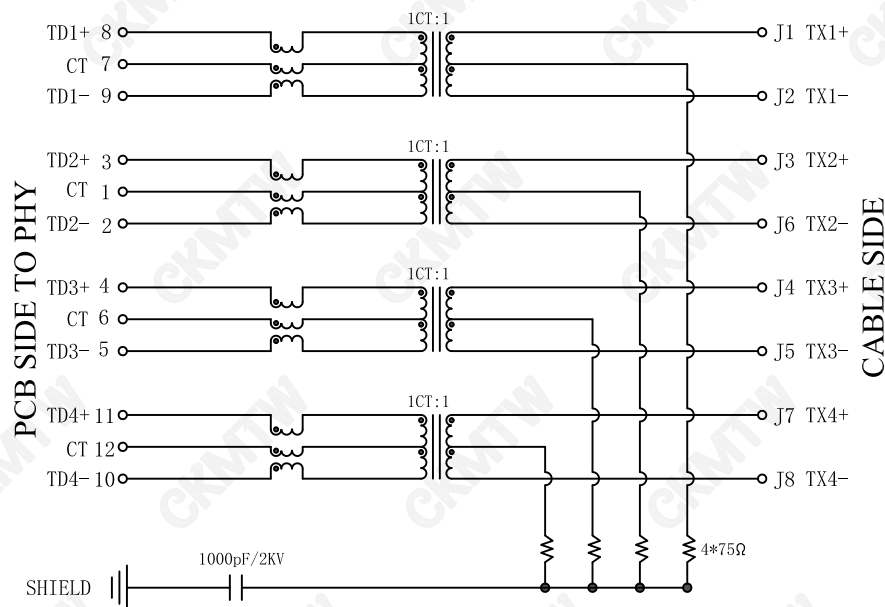
**MECHANICAL:**

DURABILITY: 750 CYCLES MIN.  
 MATING FORCE: 23N MAX.  
 OPERATING TEMPERATURE: -40°C~+85°C.  
 STORAGE TEMPERATURE: -40°C~+85°C.  
 ALL CRITICAL DIMENSIONS WITH "※"

APPROVED:	DATE:	Ckmtw 深圳市灿科盟实业有限公司 CHANKEMENG INDUSTRY CO., LTD			
CHECKED:	DATE:	TITLE: 10G网口 RJ45 10G 1*1 TAB-UP 弯插 带灯带弹 带变压器			
DRAWN: W. J. B	DATE: 2024-06-21	PART. NO.	R-RJ45R12P-D001		
		UNIT	mm	SCALE	free
		FILE NO.	Ckmtw-RJ45-0387	REV.	A

TOLERANCE TABLE

.0	±0.30
.00	±0.20
.000	±0.05

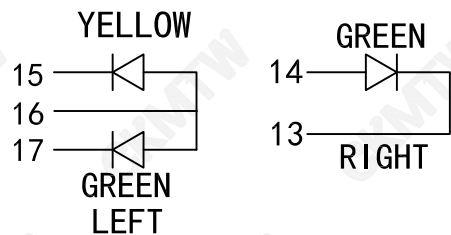


### Electrical@25° C:

- Turn ratio:8~9:J1~J2=1CT:1CT(±2%).  
3~2:J3~J6=1CT:1CT(±2%).  
4~5:J4~J5=1CT:1CT(±2%).  
11~10:J7~J8=1CT:1CT(±2%).
- OCL:160uH Min@100KHz 100mV.
- Insertion Loss: -3.0 dB Max 100KHz.  
-2.0 dB Max(-1.4dB TYP) 1~400MHz.
- Return loss: -16dB Min 1~40MHz;  
-16+10LOG(f/40)dB40~400MHz.  
-6+30LOG(f/400)dB400~500MHz.
- Cross talk: -28dB Min 1~100MHz;  
-19dB Min 100~500MHz;
- CMR: -30dB Min 1~40MHz;  
-28dB Min 40~100MHz;  
-26dB Min 100~500MHz;
- CDMR: -30dB Min 1~250MHz;  
-22dB Min 250~500MHz;
- Hi-Pot:2250V DC Min @60 Seconds.

### LED Specification

Standard LED Color	LED Wavelength	Foward(A)	Foward(V)
Green	568nm	20mA	1.8-2.4V
Yellow	590nm	20mA	1.8-2.4V
Orange	605nm	20mA	1.8-2.4V



#### TOLERANCE TABLE

.0	±0.30
.00	±0.20
.000	±0.05

APPROVED:	DATE:	Ckmtw 深圳市灿科盟实业有限公司 CHANKEMENG INDUSTRYCO., LTD			
CHECKED:	DATE:	TITLE: 10G网口 RJ45 10G 1*1 TAB-UP 弯插 带灯带弹 带变压器			
DRAWN: W. J. B	DATE: 2024-06-21	PART. NO.	R-RJ45R12P-D001		
		UNIT	mm	SCALE	free
		FILE NO.	Ckmtw-RJ45-0387	REV.	A