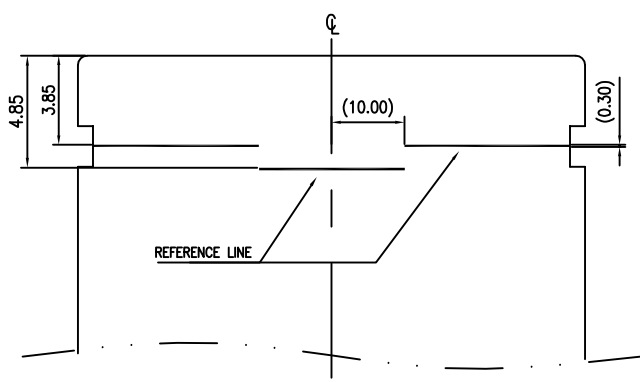
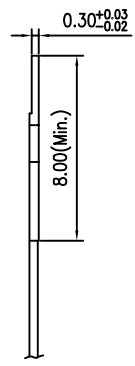
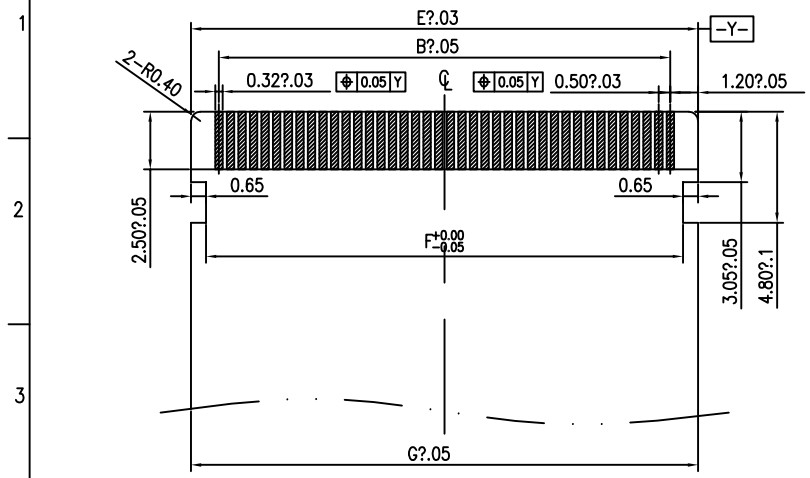
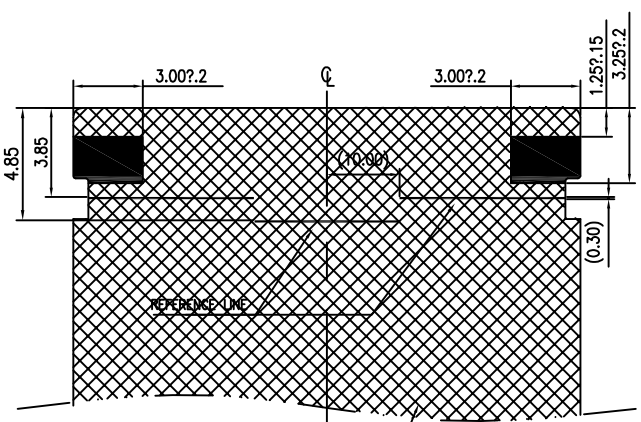
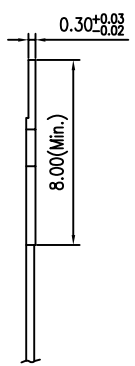
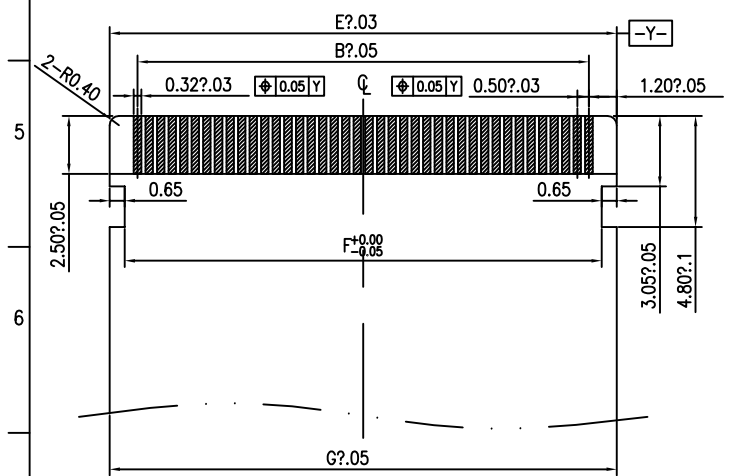


修 订 REV AO	标 记 MARK	修 改 描 要 REVISION DESCRIPTION	签 名 SIGNATURE	日 期 DATE
		NEW DWG		2016-03-12



APPLICABLE FPC/FFC
蓝白裸线（不接地）



一体补强板铝箔FFC线

APPLICABLE FPC/FFC
一体补强板铝箔FFC线

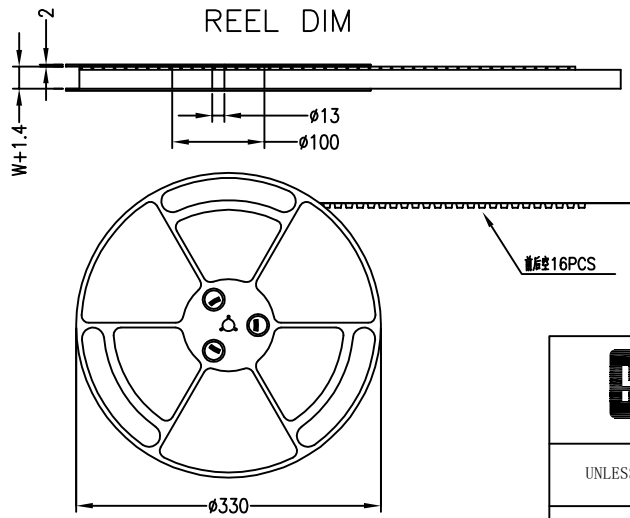
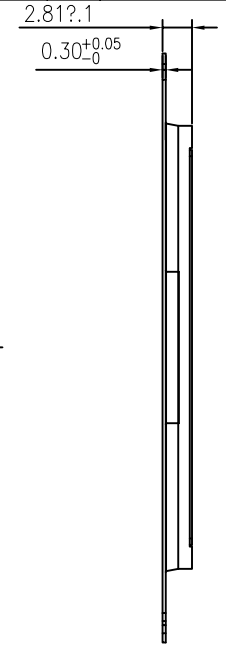
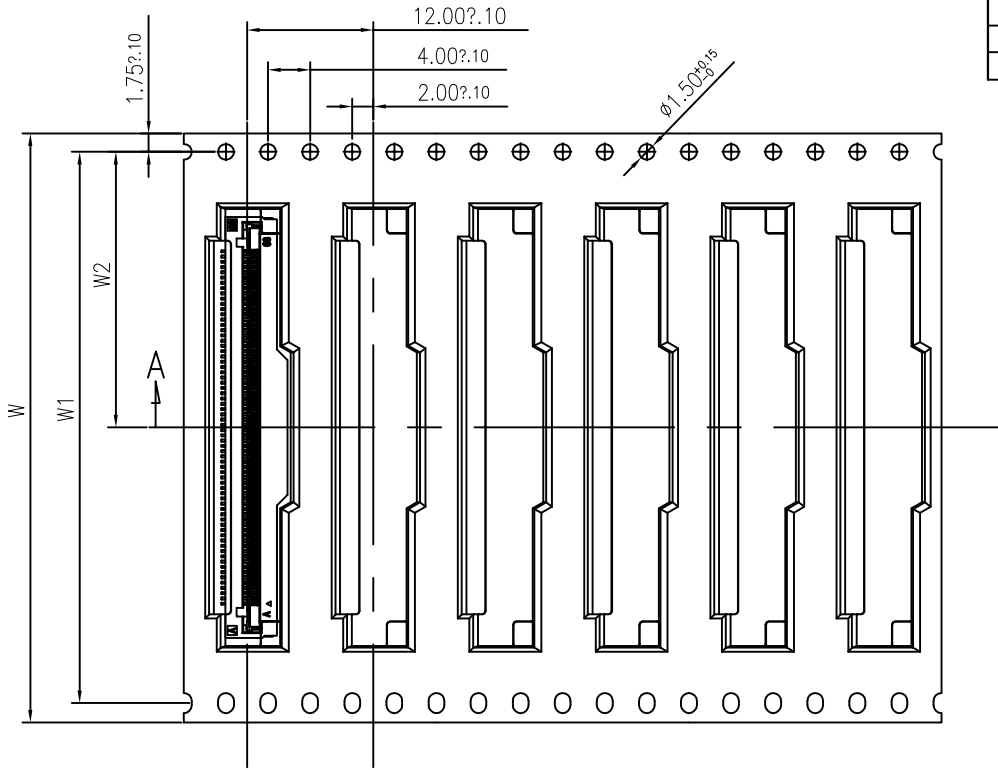
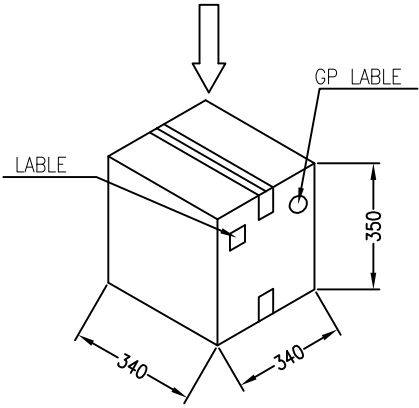
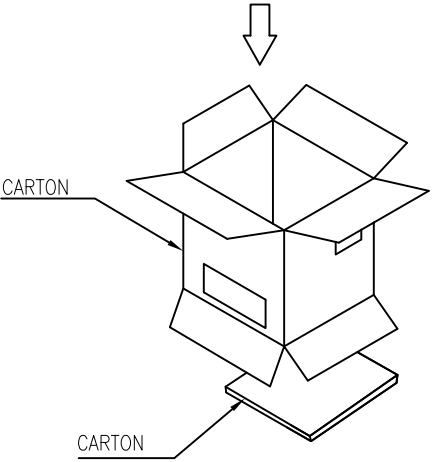
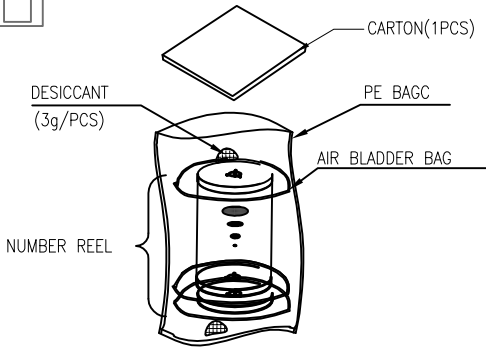
NO.of contacts	Dimensions			
	B.	E.	F.	G.
40	19.50	21.90	20.60	21.90
50	24.50	26.90	25.60	26.90
60	29.50	31.90	30.60	31.90
68	33.50	35.90	34.60	35.90
80	39.50	41.90	40.60	41.90
96	47.50	49.90	48.60	49.90



深圳市华德共创科技有限公司
Shenzhen Huade co-create Technology Co.,LTD
电话: 0755-23304126 传真: 0755-29940187

-TOLERANCES- UNLESS OTHERWISE SPECIFIED 公差参数表		TITLE: 产品名称: FPC0.5间距2.1高掀盖下接带扣0530窄版	
X.X ±0.30	X.X* ±3°	APPD: 核准:	PART NO: 产品编号: HDGC0530-96CL-GF
X.XX ±0.20	X.XX* ±2°	CHECK: 校对: 王建业	DATE
X.XXX ±0.10	X.XXX* ±1°	DRAW: 绘图: 黄艳兰	SCALE
			UNIT
			CODE NUMBER

修 订	标 记	修 改 描 要	签 名	日 期
REV A0		NEW DWG		2016-03-12



- NOTES:
- 1.Component load per 13" reel:2000 pcs
 - 2.Material: white conductive polystyrene alloy.
 - 3.Thickness:0.3±0.05mm
 - 4.All dimensions meet EIA-481-C requirements

No.of Contacts	DIM			REEL (CARTON)	SUM(PCS)
	W	W1	W2		
40pin~50pin	44	20.2	40.4	6	12000
51pin~74pin	56	52.4	26.2	5	10000
75pin~96pin	72	68.4	34.2	4	8000



深圳市华德共创科技有限公司
Shenzhen Huade co-create Technology Co.,LTD
电话: 0755-23304126 传真: 0755-29940187

-TOLERANCES- UNLESS OTHERWISE SPECIFIED 公差参数表		TITLE: 产品名称: FPC0.5间距2.1高掀盖下接带扣0530窄版	
X.X ±0.30	X.X* ±3°	APPD: 核准:	PART NO: 产品编号: HDGC0530-96CL-GF
X.XX ±0.20	X.XX* ±2°	CHECK: 校对: 王建业	DATE SCALE UNIT CODE NUMBER
X.XXX ±0.10	X.XXX* ±1°	DRAW: 绘图: 黄艳兰	2016-03-12 1:1 mm A001