

1 FEATURES

- 4.75V to 40V input voltage
- Output adjustable from 0.8V to 24V
- Output current up to 1A
- Integrated 170mΩ/135mΩ power MOSFET switches
- Shutdown current 6μA typical
- Efficiency up to 90%
- Fixed frequency 2MHz
- PFM mode in light load
- Internal soft start
- Over current protection and Hiccup
- Over temperature protection

2 APPLICATIONS

- High Voltage Power Conversion
- Automotive Applications
- Industrial distributed power applications
- Battery Powered Equipment
- OA instrument

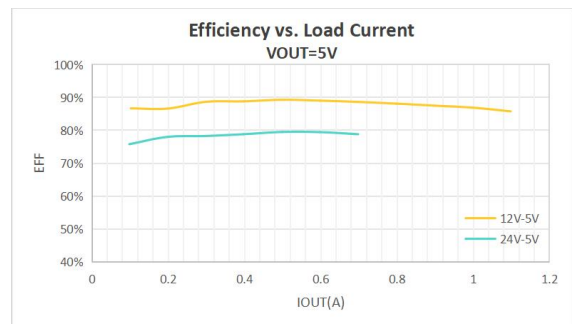
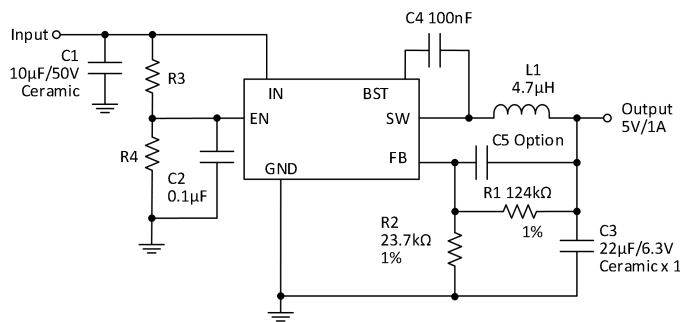
3 DESCRIPTION

The HM8441Y is high-frequency, synchronous, rectified, step-down, switch-mode converter with internal power MOSFETs. It offers a very compact solution to achieve a 1A continuous output current over a wide input supply range, with excellent load and line regulation.

The HM8441Y has synchronous-mode operation for higher efficiency over the output current-load range. Current-mode operation provides fast transient response and eases loop stabilization. Protection features include over-current protection and thermal shutdown.

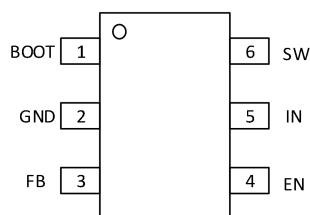
The HM8441Y requires a minimal number of readily available, standard external components and is available in SOT23-6 package.

TYPICAL APPLICATION



EFFICIENCY

4 PIN CONFIGURATION AND FUNCTIONS



Pin	Symbol	Description
1	BOOT	Bootstrap. A capacitor connected between SW and BOOT pins is required to form a floating supply across the high-side switch driver.
2	GND	Ground Pin
3	FB	Output Voltage feedback input. Connect FB to the center point of the external resistor divider.
4	EN	Drive this pin to a logic-high to enable the IC. Drive to a logic-low to disable the IC and enter micro-power shutdown mode. Don't floating
5	IN	Power supply Pin
6	SW	Switching Pin

5 ABSOLUTE MAXIMUM RATINGS

Parameter	Parameter	Rating	UNIT
$V_{IN\&V_{EN}}$	Supply Voltage	-0.3V to 44V	V
V_{SW}	Switch Node	-0.3V to $V_{IN(MAX)}+0.3V$	V
V_{BOOT}	Boost	$V_{SW}-0.3V$ to $V_{SW}+6V$	V
V	All Other Pins	-0.3V to +6V	V
T_J	Junction Temperature	+150	°C
T_{STO}	Storage Temperature Range	-65 to +150	°C
T_L	Lead Temperature(Soldering 10sec)	260	°C
T_O	Operating Temperature Range	-40 to +85	°C

Stresses above those listed in "Absolute Maximum Ratings" may cause permanent damage to the device. This is a stress only rating and operation of the device at these or any other conditions above those indicated in the operational sections of this specification is not implied.

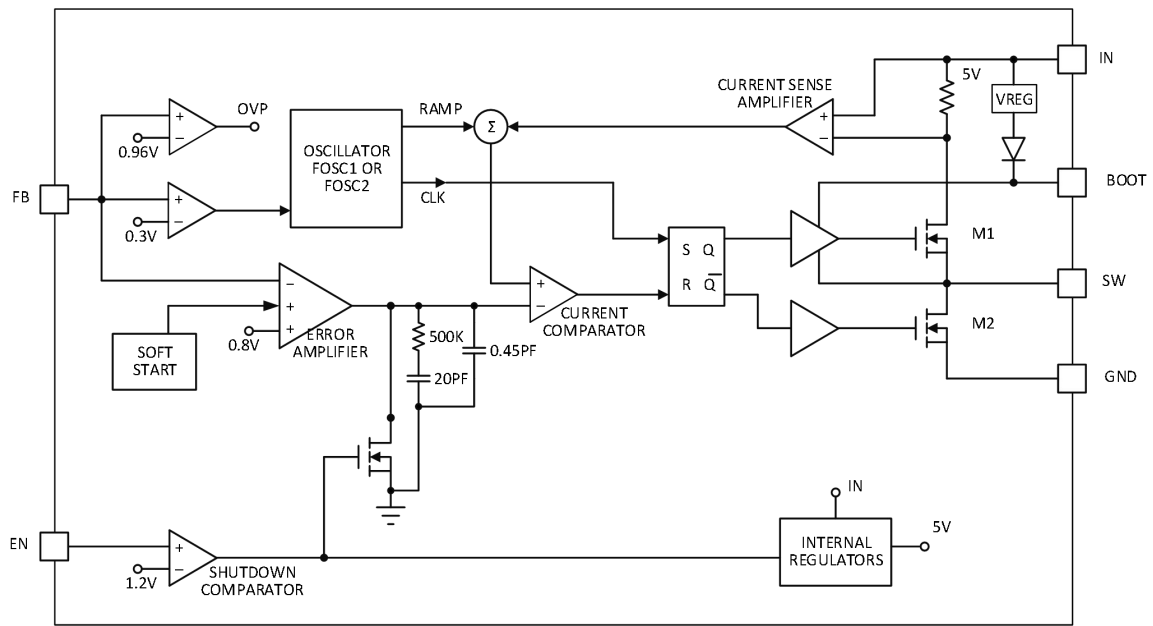
6 RECOMMENDED OPERATING CONDITIONS

Parameter	Parameter	Rating	UNIT
V_{IN}	Supply Voltage	-0.3V-40V	V
V_{OUT}	Switch Node	-0.3V to $V_{IN}+0.3V$	V
T_{OP}	Operating Temperature Range	-40 to +125	°C

7 PACKAGE THERMAL CHARACTERISTICS

Parameter	Parameter	Rating	UNIT
θ_{JA}	Thermal Resistance	50	°C/W

8 BLOCK DIAGRAM



Functional Block Diagram

9 ELECTRICAL CHARACTERISTICS

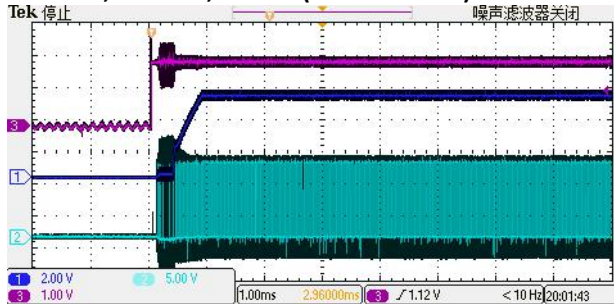
PARAMETER	Symbol	TEST CONDITIONS	MIN	TYP	MAX	UNIT
Supply Voltage	V_{IN}		4.75		40	V
Output Voltage	V_{OUT}		0.8		24	V
Shutdown Supply Current		$V_{EN} = 0V$		6	7	μA
Supply Current		$V_{EN} = 2.0V, V_{FB} = 0.9V$		0.09		mA
Feedback Voltage	V_{FB}	$4.75V \leq V_{IN} \leq 40V$	0.785	0.8	0.815	V
High-Side Switch-On Resistance*	$R_{DS(ON)1}$			170		m Ω
Low-side Switch-On Resistance*	$R_{DS(ON)2}$			130		m Ω
High-Side Switch Leakage Current		$V_{EN} = 0V, V_{SW} = 0V,$ $T_A = +125^{\circ}C$		0.1		μA
Upper Switch Current Limit		Minimum Duty Cycle		1.5		A
Lower Switch Current Limit		From Drain to Source		0		A
Oscillation Frequency	F_{OSC1}		1600	2000	2400	KHz
Maximum Duty Cycle	D_{MAX}	$V_{FB} = 0.5V$		90		%
Minimum On Time*				80		ns
EN Falling Threshold Voltage		V_{EN} Falling		1.1		V
EN Rising Threshold Voltage		V_{EN} Rising		1.3		V
Input Under Voltage Lockout Threshold		V_{IN} Rising		4.3		V
Input Under Voltage Lockout Threshold Hysteresis				0.4		V
Soft-Start Period	T_{SS}	V_{FB} from 0 to 0.8V		0.9		ms
Thermal Shutdown*				150		$^{\circ}C$

10 TYPICAL CHARACTERISTICS

$V_{IN} = 12V$, $V_O = 5V$, $L1 = 4.7\mu H$, $C_{load} = 22\mu F$, $T_A = +25^\circ C$, unless otherwise noted.

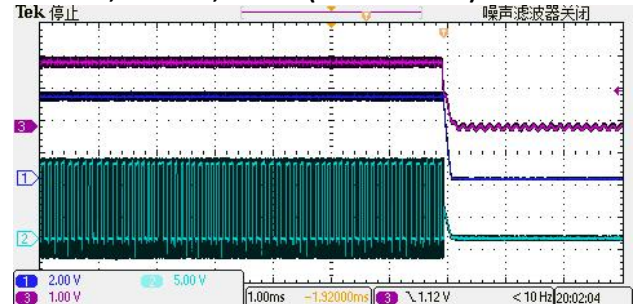
Startup through Enable

$V_{IN} = 12V$, $V_{out} = 5V$, $I_{out} = 1A$ (Resistive load)



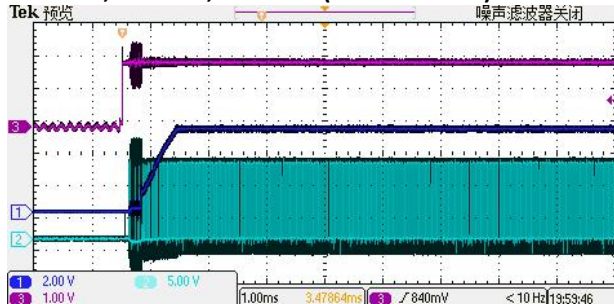
Shutdown through Enable

$V_{IN} = 12V$, $V_{out} = 5V$, $I_{out} = 1A$ (Resistive load)



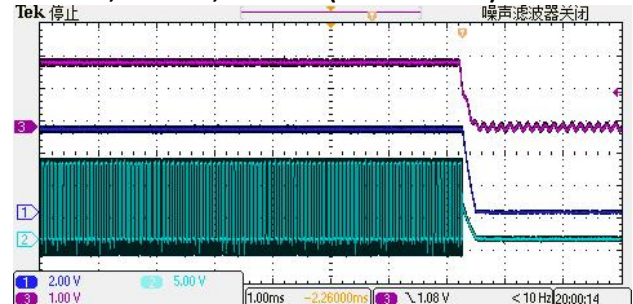
Startup through Enable

$V_{IN} = 12V$, $V_{out} = 5V$, $I_{out} = 0.6A$ (Resistive load)

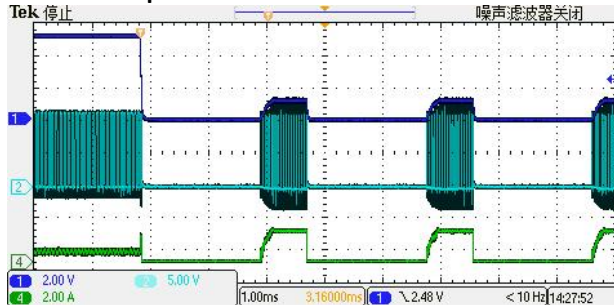


Shutdown through Enable

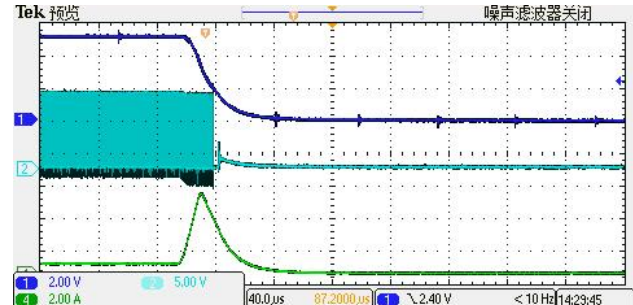
$V_{IN} = 12V$, $V_{out} = 5V$, $I_{out} = 0.6A$ (Resistive load)



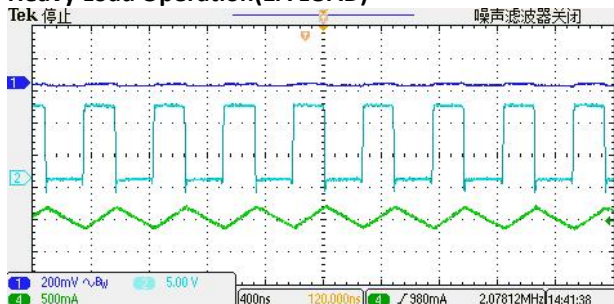
Short&Hiccup Protection



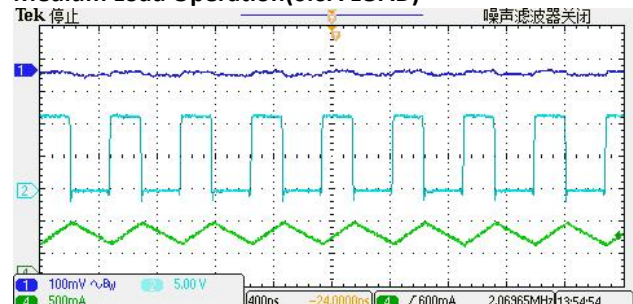
Short Circuit Protection



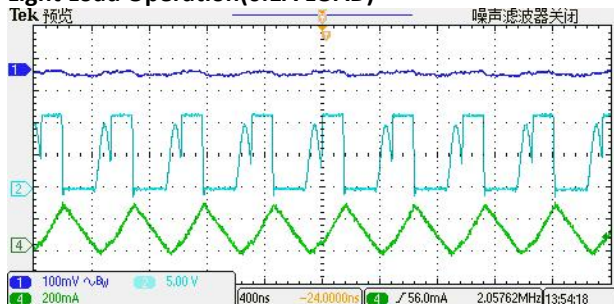
Heavy Load Operation(1A LOAD)



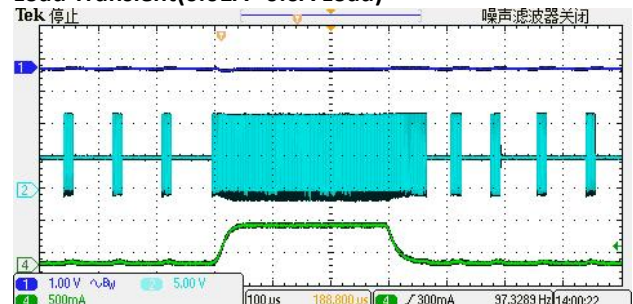
Medium Load Operation(0.6A LOAD)



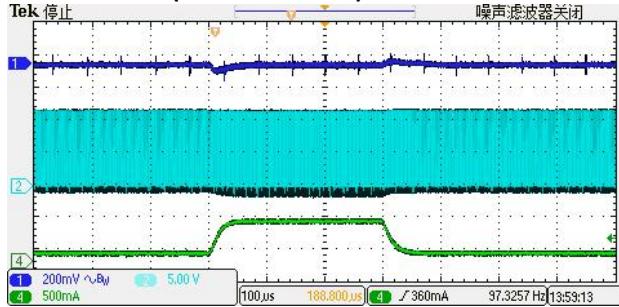
Light Load Operation(0.1A LOAD)



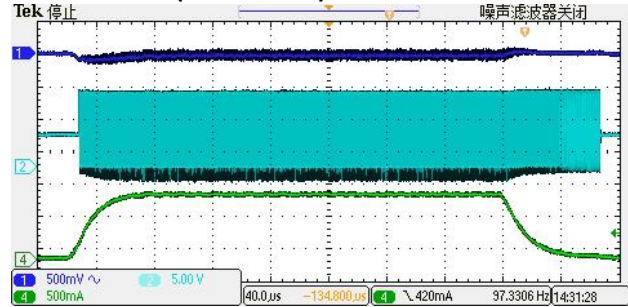
Load Transient(0.01A--0.6A Load)



Load Transient(0.1A--0.6A Load)



Load Transient(0A--1A Load)



11 OPERATION

The HM8441Y is a 2MHz, non-synchronous, step-down switching regulator with integrated internal high-side high voltage power MOSFET. It provides internally compensated single 1A highly efficient output with current mode control. It features wide input voltage range, internal soft-start control, and precision current limit. It's very low operational quiescent current suits it for battery powered applications

Pulse-Width Modulation (PWM) Control

At moderate-to-high output currents, the HM8441Y operates in a fixed-frequency, peak current-control mode to regulate the output voltage. A pulse-width modulation (PWM) cycle initiated by the internal clock turns on the power high-side MOSFET (HS-FET). The HS-FET remains on until its current reaches the value set by the COMP voltage (V_{COMP}). After the HS FET is off, the low-side MOSFET (LS-FET) turns on, and the inductor current flows through the LS-FET. To avoid a shoot-through, a dead time is inserted to prevent the HS-FET and LS FET from turning on at the same time. For each turn-on and turn-off in a switching cycle, the HS-FET turns on and off with a minimum on and off time limit. To prevent inductor current and output voltage runaway, the switching frequency folds back when the HS-FET minimum turn-on is detected internally. When the PWM signal goes low, the HS-FET turns off and remains off for at least 160ns before the next cycle begins. If the current in the HS-FET does not reach the COMP-set current value within one PWM cycle, the HS FET remains on to avoid a turn-off operation.

Pulse-Frequency Mode (PFM)

Under light-load conditions, the HM8441Y enters pulse-frequency mode (PFM) to improve efficiency. PFM is triggered when V_{COMP} drops below the internal sleep threshold, which generates a pause command to block the turn on clock pulse, so the power MOSFET does not turn on. This reduces gate driving and switching losses. The pause command causes the entire chip to enter sleep mode, reducing the quiescent current to improve light-load efficiency. When V_{COMP} exceeds the sleep threshold, the pause signal resets, and the chip resumes normal PWM operation. Whenever the pause command changes from low to high, the PWM signal goes high immediately and turns on the power MOSFET.

Under-Voltage Lockout (UVLO)

V_{IN} under-voltage lockout (UVLO) protects the chip from operating at an insufficient supply voltage. The UVLO rising threshold is approximately 4.3V, while its falling threshold is 3.9V.

Enable Control (EN)

The HM8441Y has a dedicated enable control pin (EN). When V_{IN} rises above the threshold, EN can enable or disable the chip for high effective logic. Its falling threshold is 1.1V, and its rising threshold is about 1.3V. An internal 10MΩ resistor from EN to GND allows EN to be floated to shut down the chip. When the EN voltage is pulled to 0V, the chip enters the lowest shutdown current mode. When the EN voltage rises above 0V but remains below the rising threshold, the chip remains in shutdown mode with a slightly higher shutdown current. EN can directly connect to PVDD.

Internal Soft Start (SS)

A reference-type soft start (SS) prevents the converter output voltage from overshooting during start-up. When the chip starts up, the internal circuitry generates a soft-start voltage (VSS) that ramps up from 0V during the SS time. When VSS is lower than VREF, VSS overrides VREF as the error amplifier reference. The maximum VSS value is approximately the same as VFB, so if VFB falls, the maximum of VSS falls. This accommodates short-circuit recovery. When the short circuit is removed, VSS ramps up to prevent an output voltage overshoot.

Thermal Shutdown

Thermal shutdown prevents thermal runaway. When the silicon die temperature exceeds its upper threshold, the entire chip shuts down. When the temperature drops below its lower threshold, the chip is enabled again.

Floating Driver and Bootstrap Charging

The floating power MOSFET driver is powered by an external bootstrap capacitor. This floating driver has its own UVLO protection with a rising threshold of about 2.7V and a falling threshold of about 300mV. During UVLO, VSS resets to zero. When the UVLO ends, the controller enters soft start. The bootstrap capacitor is charged and regulated to about 5V by the dedicated internal bootstrap regulator. When the voltage between the BST and SW nodes falls below its regulation, a PMOS pass transistor connected from VIN to BST turns on. The charging current path goes from VIN to BST to SW. The external circuit must provide enough voltage headroom to facilitate the charging.

Current Comparator and Current Limit

A current-sense MOSFET senses the power MOSFET current. This current is input to the high-speed current comparator for currentmode control. When the power MOSFET turns on, the comparator is first blanked to limit noise, and then compares the power switch current against VCOMP. When the sensed value exceeds VCOMP, the comparator output goes low to turn off the power MOSFET. The maximum current of the internal power MOSFET is limited cycleby-cycle internally. The switching frequency folds back to prevent an inductor current runaway during start-up or a short circuit.

Start-Up and Shutdown

If both VIN and VEN exceed their respective thresholds, the chip starts up. The reference block first starts to generate a stable reference voltage and current, and then the internal regulator starts to provide a stable supply for the rest of the circuit. While the internal supply rail is up, an internal timer turns the power MOSFET off for about 50μs to blank any start-up noise. When the internal soft-start block is enabled, it first holds its SS output low to ensure that the rest of the circuit is ready before ramping up.

Three events can shut down the chip: EN low, VIN low, and thermal shutdown. During the shutdown procedure, the signaling path is blocked first to avoid any fault triggering. VCOMP and the internal supply rail are then pulled low. The floating driver is not subject to this shutdown command, but its charging path is disabled.

12 APPLICATION INFORMATION

OVERVIEW

The HM8441Y is synchronous rectified, current-mode, step-down regulator. It regulates input voltages from 4.75V to 40V down to an output voltage as low as 0.8V to 24V, and supplies up to 1A of load current.

The HM8441Y uses current-mode control to regulate the output voltage. The output voltage is measured at FB through a resistive voltage divider and amplified through the internal trans-conductance error amplifier.

The converter uses internal N-Channel MOSFET switches to step-down the input voltage to the regulated output voltage. Since the high side MOSFET requires a gate voltage greater than the input voltage, a boost capacitor connected between SW and BOOT is needed to drive the high side gate. The boost capacitor is charged from the internal 5V rail when SW is low.

The HM8441Y has power save mode for light load. During this time, the internal clock is blocked, thus the HM8441Y reduces the frequency of pulses sent to the switches to achieve power saving through PFM mode. When the HM8441Y FB pin exceeds 20% of the nominal regulation voltage of V_{ref} , the over voltage comparator is tripped, forcing the high-side switch off.

SETTING THE OUTPUT VOLTAGE

The external resistor divider sets the output voltage. The feedback resistor R2 also sets the feedback-loop bandwidth through the internal compensation capacitor (see the Typical Application circuit). The voltage divider divides the output voltage down to the feedback voltage by the ratio:

$$R2 = R1 / (V_{OUT}/0.8V - 1)$$

VOUT	R1	R2
1.8V	12.5KΩ(1%)	10KΩ(1%)
2.5V	21.5KΩ(1%)	10KΩ(1%)
3.3V	39KΩ(1%)	12.5KΩ(1%)
5V	52.5KΩ(1%)	10KΩ(1%)
12V	140KΩ(1%)	10KΩ(1%)
24V	290KΩ(1%)	10KΩ(1%)
32V	390KΩ(1%)	10KΩ(1%)

INDUCTOR

The inductor is required to supply constant current to the output load while being driven by the switched input voltage. A larger value inductor will result in less ripple current that will result in lower output ripple voltage. However, the larger value inductor will have a larger physical size, higher series resistance, and/or lower saturation current. A good rule for determining, the inductance to use is to allow the peak-to-peak ripple current in the inductor to be approximately 30% of the maximum switch current limit. Also, make sure that the peak inductor current is below the maximum switch current limit. The inductance value can be calculated by:

$$L = [V_{OUT} / (f_s \times \Delta I_L)] \times (1 - V_{OUT}/V_{IN})$$

Where V_{OUT} is the output voltage, V_{IN} is the input voltage, f_s is the switching frequency, and ΔI_L is the peak-to-peak inductor ripple current.

Choose an inductor that will not saturate under the maximum inductor peak current. The peak inductor current can be calculated by:

$$ILP = I_{LOAD} + [V_{OUT} / (2 \times f_s \times L)] \times (1 - V_{OUT}/V_{IN})$$

Where I_{LOAD} is the load current.

The choice of which style inductor to use mainly depends on the price vs. size requirements and any EMI requirements.

INPUT CAPACITOR

The input current to the step-down converter is discontinuous, therefore a capacitor is required to supply the AC current to the step-down converter while maintaining the DC input voltage. Use low ESR capacitors for the best performance. Ceramic capacitors are preferred, but tantalum or low-ESR electrolytic capacitors may also suffice. Choose X5R or X7R dielectrics when using ceramic capacitors.

Since the input capacitor (C1) absorbs the input switching current it requires an adequate ripple current rating. The RMS current in the input capacitor can be estimated by:

$$I_{C1} = I_{LOAD} \times [(V_{OUT}/V_{IN}) \times (1 - V_{OUT}/V_{IN})]^{1/2}$$

The worst-case condition occurs at $V_{IN} = 2V_{OUT}$, where $I_{C1} = I_{LOAD}/2$. For simplification, choose the input capacitor whose RMS current rating greater than half of the maximum load current.

The input capacitor can be electrolytic, tantalum or ceramic. When using electrolytic or tantalum capacitors, a small, high quality ceramic capacitor, i.e. 0.1μF, should be placed as close to the I_C as possible. When using ceramic capacitors, make sure that they have enough capacitance to provide sufficient charge to prevent excessive voltage ripple at input. The input voltage ripple for low ESR capacitors can be estimated by:

$$\Delta V_{IN} = [I_{LOAD} / (C1 \times f_s)] \times (V_{OUT}/V_{IN}) \times (1 - V_{OUT}/V_{IN})$$

Where C1 is the input capacitance value.

OUTPUT CAPACITOR

The output capacitor is required to maintain the DC output voltage. Ceramic, tantalum, or low ESR electrolytic capacitors are recommended. Low ESR capacitors are preferred to keep the output voltage ripple low. The output voltage ripple can be estimated by:

$$\Delta V_{OUT} = [V_{OUT} / (f_s \times L)] \times (1 - V_{OUT}/V_{IN}) \times [R_{ESR} + 1 / (8 \times f_s \times C2)]$$

Where C2 is the output capacitance value and RESR is the equivalent series resistance (ESR) value of the output capacitor.

In the case of ceramic capacitors, the impedance at the switching frequency is dominated by the capacitance. The output voltage ripple is mainly caused by the capacitance. For simplification, the output voltage ripple can be estimated by:

$$\Delta V_{OUT} = [V_{OUT} / (8 \times f_s \times L \times C2)] \times (1 - V_{OUT}/V_{IN})$$

In the case of tantalum or electrolytic capacitors, the ESR dominates the impedance at the switching frequency. For simplification, the output ripple can be approximated to:

$$\Delta V_{OUT} = [V_{OUT} / (f_s \times L)] \times (1 - V_{OUT}/V_{IN}) \times R_{ESR}$$

The characteristics of the output capacitor also affect the stability of the regulation system.

EXTERNAL BOOTSTRAP DIODE

An external bootstrap diode may enhance the efficiency of the regulator, the applicable conditions of external BOOT diode are:

- $V_{OUT} = 5V$ or $3.3V$; and
- Duty cycle is high: $D = V_{OUT}/V_{IN} > 65\%$

In these cases, an external BOOT diode is recommended from the output of the voltage regulator to BOOT pin, as shown in [Figure 2](#).

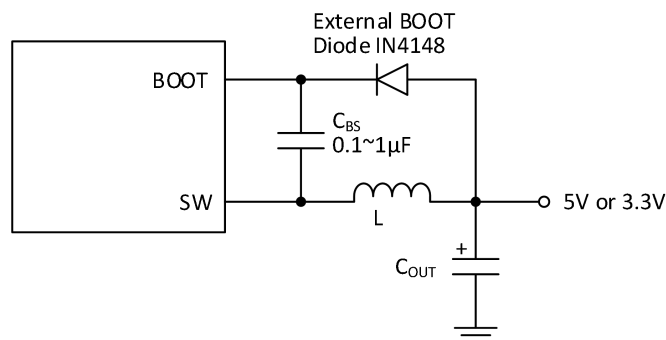


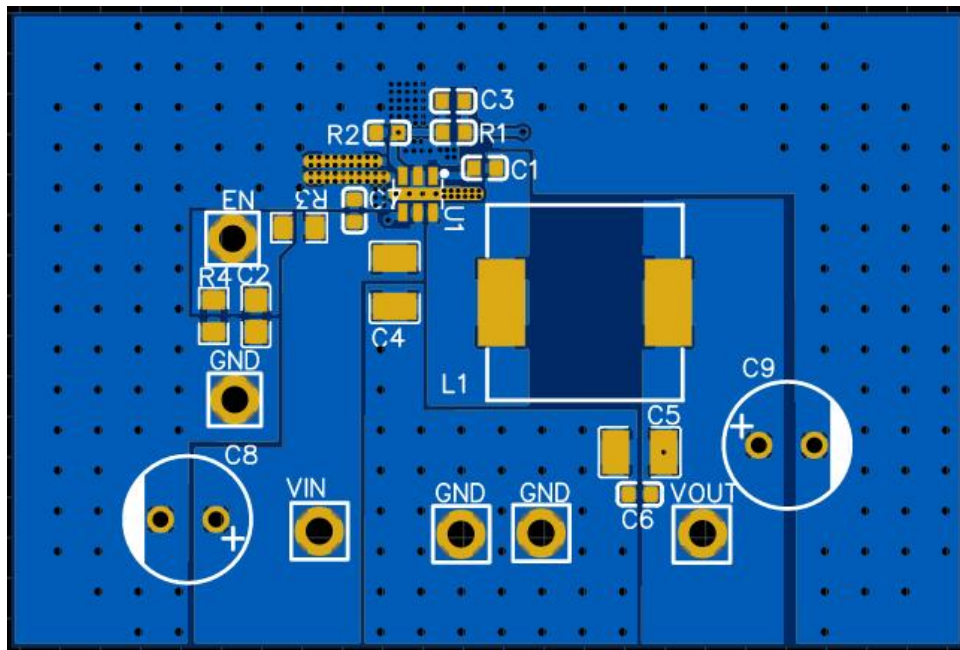
Figure 2: Add optional external bootstrap diode to enhance efficiency.

The recommended external BOOT diode is IN4148, and the BOOT capacitor is 0.1~1μF.

13 LAYOUT

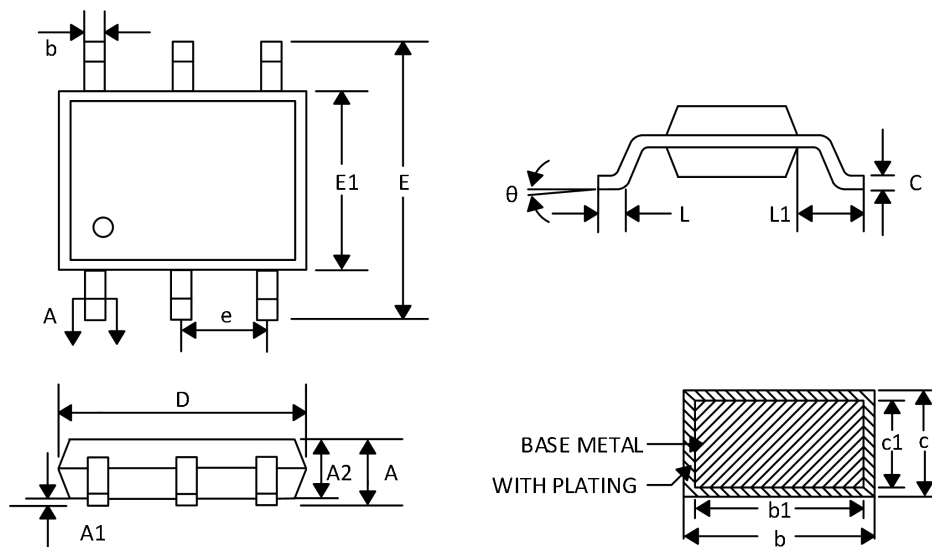
PCB layout is very important to achieve stable operation. Please follow the guidelines below.

- 1) Keep the path of switching current short and minimize the loop area formed by Input capacitor, high-side MOSFET and low-side MOSFET.
- 2) Bypass ceramic capacitors are suggested to be put close to the VIN Pin.
- 3) Ensure all feedback connections are short and direct. Place the feedback resistors and compensation components as close to the chip as possible.
- 4) Rout SW away from sensitive analog areas such as FB.
- 5) Connect IN, SW, and especially GND respectively to a large copper area to cool the chip to improve thermal performance and long-term reliability.
- 6) It is recommended to reserve a place for CFF in layout.



PACKAGE DIMENSIONS

SOT23-6



Symbol	MIN	NOM	MAX
A	-	-	1.25
A1	0.03	0.08	0.15
A2	1.05	1.10	1.15
b	0.27	-	0.35
b1	0.26	0.285	0.31
c	0.135	-	0.23
c1	0.127	0.152	0.178
D	2.82	2.92	3.02
E	2.60	2.90	3.00
E1	1.50	1.62	1.70
e	0.95BSC		
L	0.35	0.45	0.55
L1	0.49	0.64	0.79
θ	0°	-	8°

ORDER INFORMATION

Order number	Package	Marking information	Operation Temperature Range	MSL Grade	Ship, Quantity	Green
HM8441Y	SOT23-6	A3XYWW	-40 to 85°C	3	T&R,3000	Rohs