

This document contains proprietary information and such information may not be disclosed to others for any purposes, not used for sales/marketing/procurement purposes without written permission

REV	DESCRIPTION OF REVISION	ECN NO.	BY	DATE	APPROVED
A	Initial Release	—	H.wei	19/03/17	19/03/17

1 Electrical

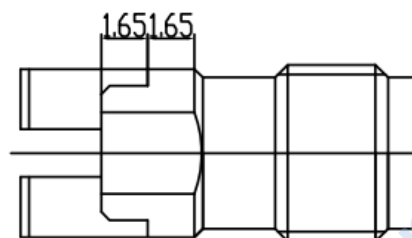
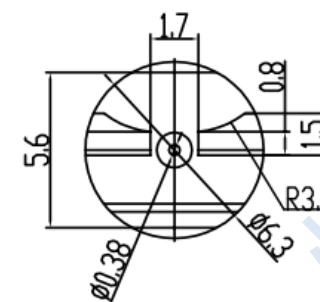
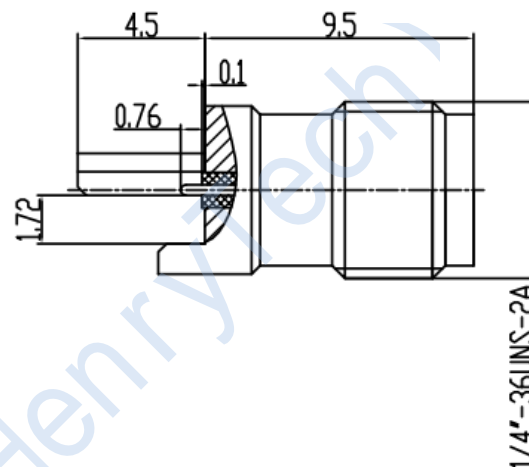
1.1 Impedence	50Ω
1.2 Frequency	DC~18GHz
1.2 Dielectric withstanding voltage	1000V(volts RMS)
1.3 Center contact resistance	≤ 3MΩ
1.4 Outer contact resistance	≤ 2MΩ
1.5 Insulation resistance:	≥5000MΩ

2 Environmental&Mechanical

2.1 Temperature range	-55℃~155℃
2.2 RoHs Compliant	
2.3 Durability	>500 cycles



3 Materials&plating

3.1 Body:	Brass, Gold plated
3.2 Insulator:	Teflon
3.3 Contact Pin:	Beryllium Copper Gold plated



Notes:

- ALL SPECIFICATIONS ARE SUBJECT TO CHANGE NOTICE AT ANY TIME
- CUSTOMER OUTLINE DRAWING FOR REFERENCE ONLY

DRAWN: H.wei 19/03/17	TITLE: HL-SMA-KHDCT SMA Female Conn. For PCB				
ENGINEER: L.yu 19/03/17		 DIMENSION IN MILLIMETERS (mm)			
APPROVED: W.yi 19/03/17					
TOLERANCES UNLESS OTHERWISE SPECIFIED: X ±0.50 .X ±0.20 .XX ±0.10 ANGLES ±1°	PART NO: HL-SMA-KHDCT	SIZE: A4	SCALE: N/A	SHEET: 1/1	REV: A