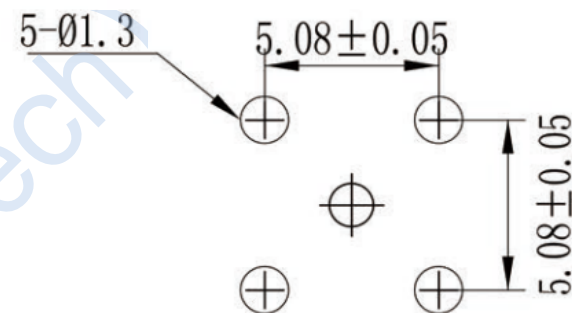
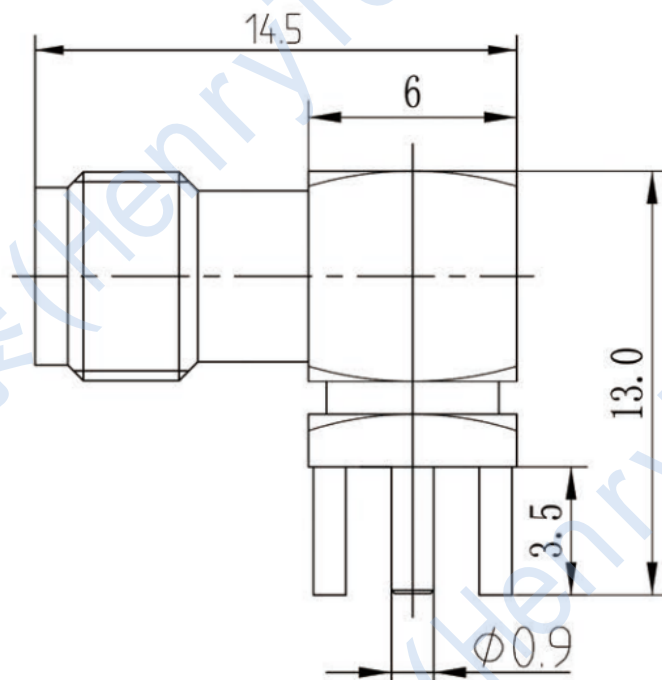


This document contains proprietary information and such information may not be disclosed to others for any purposes, not used for sales/marketing/procurement purposes without written permission

REV	DESCRIPTION OF REVISION	ECN NO.	BY	DATE	APPROVED
A	Initial Release	—	H.wei	19/03/17	19/03/17



Notes:

Electrical characteristics



1. Impedance: 50 Ω
2. Working voltage: ≤ 335 V
3. Insulation resistance: ≥ 5000 M Ω
4. Dielectric strength: 1000 V
5. Contact resistance: Center contact ≤ 3 M Ω
Outer contact ≤ 2.5 M Ω

Material&Finish

Inner Contact: gold plated over Brass
Outer Contact: gold plated over brass.
Insulators: Teflon

Notes:

1. ALL SPECIFICATIONS ARE SUBJECT TO CHANGE NOTICE AT ANY TIME
2. CUSTOMER OUTLINE DRAWING FOR REFERENCE ONLY

DRAWN: H.wei 19/03/17	TITLE: RF Coaxial Connector SMA Female Conn. R/A PCB				
ENGINEER: L.yu 19/03/17		 DIMENSION IN MILLIMETERS (mm)			
APPROVED: W.yi 19/03/17		SIZE: A4	SCALE: N/A	SHEET: 1/1	REV: A
TOLERANCES UNLESS OTHERWISE SPECIFIED: X ± 0.50 .X ± 0.20 .XX ± 0.10 ANGLES $\pm 1^\circ$	PART NO: HL-SMA-KWHD2				