

## 60V Normally Open (1-Form-A) Optical MOSFET Relay

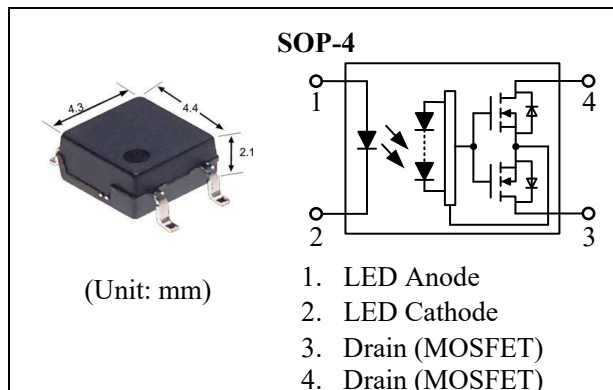
### General Features

- Low-level off State Leakage Current
- No Moving Parts
- Fast Switching Speed
- 1500 Vrms Input/Output Isolation
- SOP Package 4 Pin Type in Miniature Design
- Highly Efficient GaAlAs Infrared LED and Hight-Reliability MOSFETs

$V_{OFF}$	$I_{ON}$	$R_{ON(TYP.)}$
<b>60V</b>	<b>1.2A</b>	<b>0.14Ω</b>

### Application

- Telecommunications
- Measurement Equipment
- Industrial Automation
- Control Equipment
- High Speed Inspection Machine



### Ordering Information

Part Number	Package	Marking	Packing Quantity
OPY212S	SOP-4	OPY212S	2000pcs/Reel

### Absolute Maximum Ratings

$T_A=25^{\circ}\text{C}$  unless otherwise specified

Item		Symbol	Note	Value	Unit
Input	LED Forward Current	$I_F$	--	50	mA
	LED Pulse Forward Current	$I_{FP}$	$f = 100\text{Hz}$ , duty = 1%	1000	mA
	LED Reverse Voltage	$V_R$	--	5	V
	LED Power Dissipation	$P_D$	--	75	mW
Output	Off-state Output Terminal Voltage	$V_{OFF}$	AC Peak or DC	60	V
	On-state Current	$I_{ON}$	--	1.2	A
	On-state Peak Current	$I_{ONP}$	100ms (1 pulse)	3.0	A
	Output Power Dissipation	$P_O$	--	380	mW
Total Power Dissipation		$P_T$	--	450	mW
Storage Temperature		$T_{stg}$	--	-40 to 100	$^{\circ}\text{C}$
Operating Temperature		$T_{opr}$	--	-40 to 85	$^{\circ}\text{C}$
Lead Soldering Temperature		$T_{sol}$	10s max.	260	$^{\circ}\text{C}$
Isolation Voltage <sup>[1]</sup>		$BV_{IO}$	$RH \leq 60\%$ , 60s	1500	Vrms

Caution: Stresses beyond those listed in the "Absolute Maximum Ratings" may cause permanent damage to the device.

## Electrical Characteristics

 $T_A = 25^\circ\text{C}$  unless otherwise specified

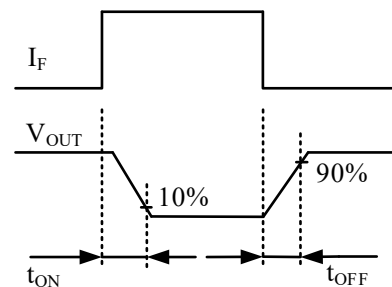
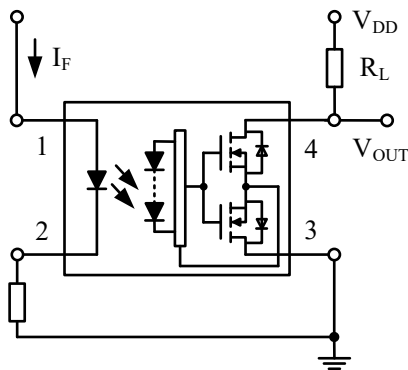
Item		Symbol	Min.	Typ.	Max.	Unit	Test Conditions
Input	LED Forward Voltage	$V_F$	--	1.3	1.4	V	$I_F = 10\text{mA}$
	LED Reverse Current	$I_R$	--	--	5.0	$\mu\text{A}$	$V_R = 5\text{V}$
	Trigger LED Current	$I_{FT}$	--	0.5	2.0	mA	$I_{ON} = 100\text{mA}$
	Return LED Current	$I_{FC}$	0.05	0.35	--	mA	$I_{OFF} = 100\mu\text{A}$
Output	On-state Resistance <sup>[2]</sup>	$R_{ON}$	--	0.14	0.35	$\Omega$	$I_F = 5\text{mA}, I_{ON} = 100\text{mA}$
	Off-state Leakage Current	$I_{OFF}$	--	--	1.0	$\mu\text{A}$	$V_{OFF} = 60\text{V}$
	Output Capacitance	$C_{OUT}$	--	115	--	pF	$V_{OFF} = 0\text{V}, f = 1\text{MHz}$
Transmission	Turn-on Time <sup>[3]</sup>	$T_{ON}$	--	0.3	1.3	ms	$I_F = 5\text{mA}, I_{ON} = 100\text{mA}$
	Turn-off Time <sup>[3]</sup>	$T_{OFF}$	--	0.08	0.8	ms	
Coupled	Capacitance Input to Output	$C_{IO}$	--	0.8	1.5	pF	$f = 1\text{MHz}$
	Isolation Resistance	$R_{IO}$	$10^{10}$	--	--	$\Omega$	DC = 500V

NOTE:

[1] LED pins are shorted together. Detector pins are also shorted together.

[2] Measurement Taken within 1 Second of On-time.

[3] Switching Time Test Circuit.



## Typical Device Performance

Figure 1. Load Current vs. Ambient Temperature

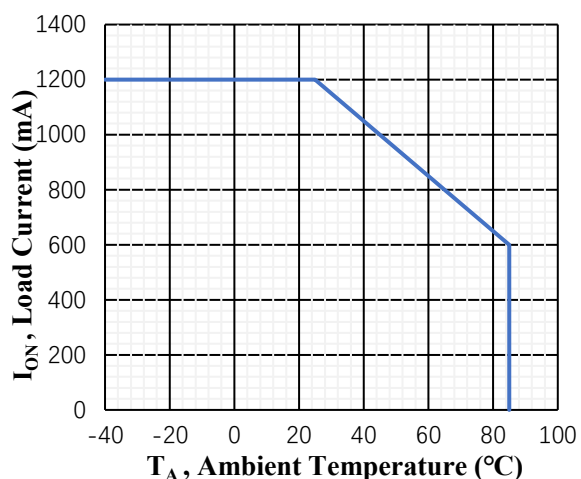


Figure 2. On-state Resistance vs. Ambient Temperature

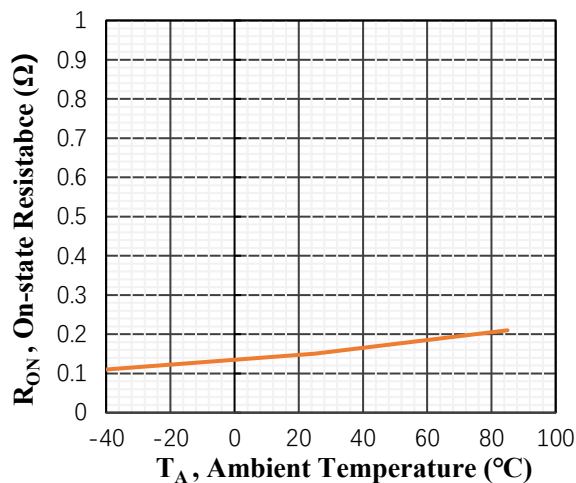


Figure 3. Switching Time vs. Ambient Temperature

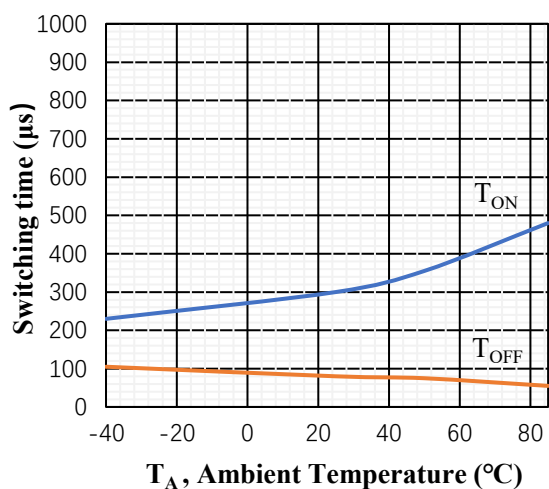


Figure 4. Trigger LED Current vs. Ambient Temperature

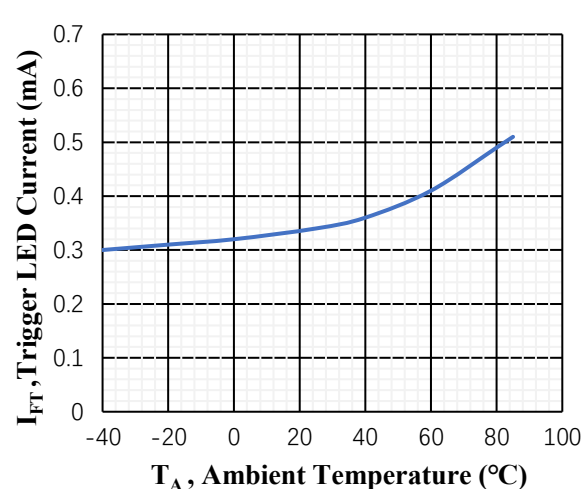


Figure 5. LED forward Voltage Vs. Ambient Temperature

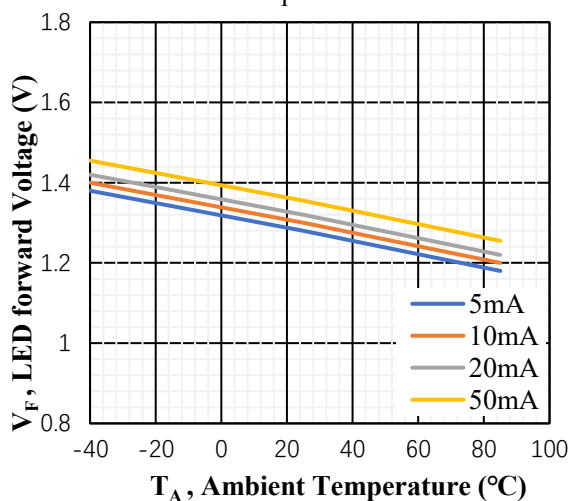
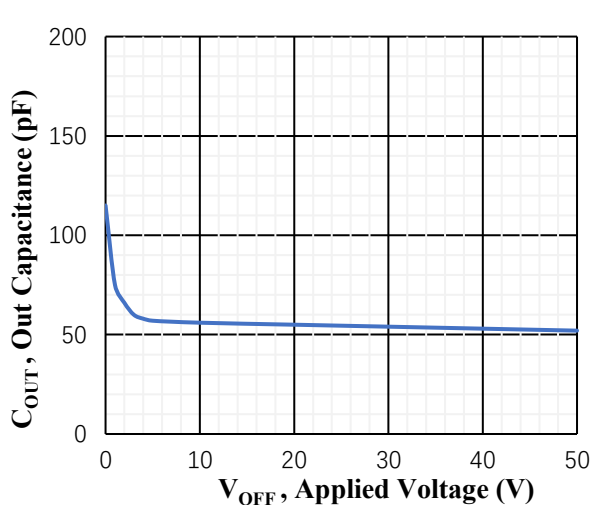
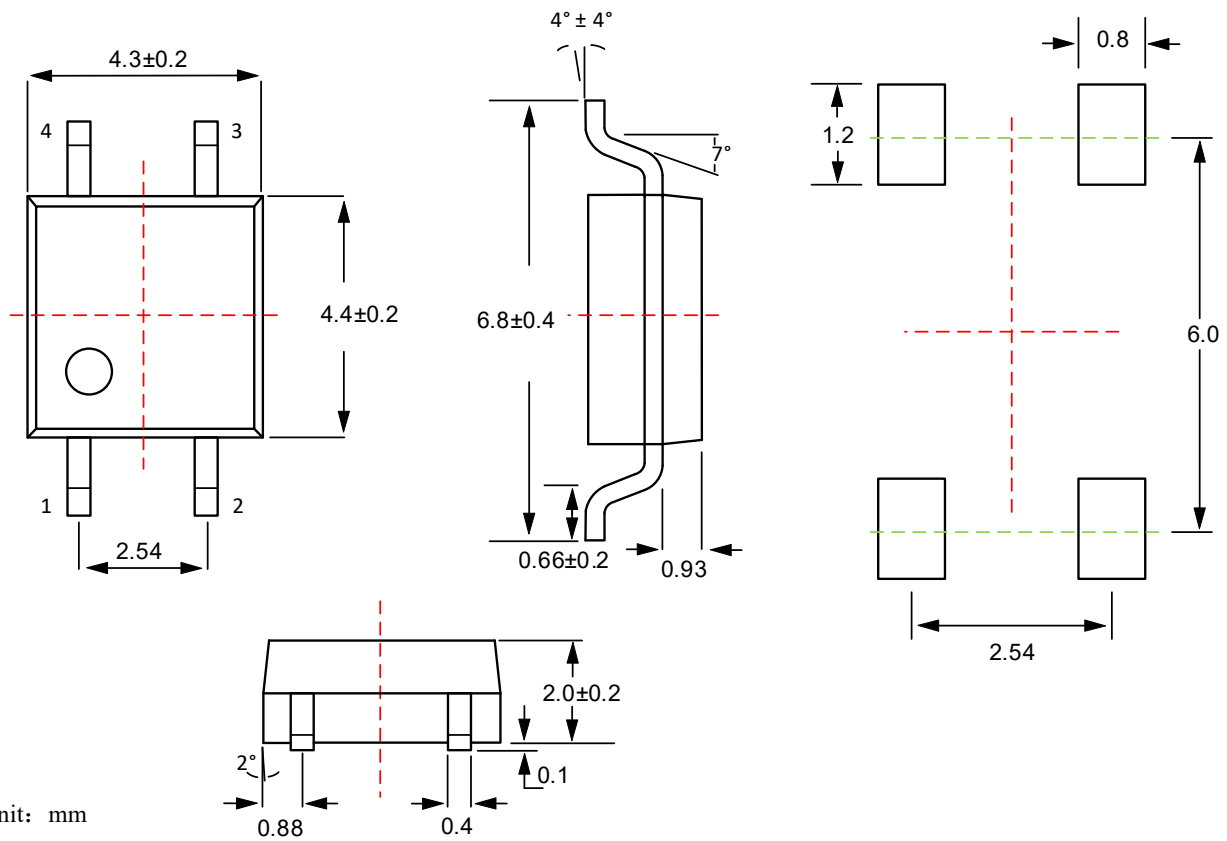


Figure 6. Output Capacitance Vs. Applied Voltage



## Package Dimensions

### SOP - 4



**Published by****ARK Microelectronics Co., Ltd.****Add: D26, UESTC National Science Park, No. 1 Shuangxing Avenue, Chengdu, Sichuan****Tel: +86 (028) 8523-2215****Email: [sales@ark-micro.com](mailto:sales@ark-micro.com)****Website: [www.ark-micro.com](http://www.ark-micro.com)****All Rights Reserved.**

## Disclaimers

---

ARK Microelectronics Co., Ltd. reserves the right to make change without notice in order to improve reliability, function or design and to discontinue any product or service without notice. Customers should obtain the latest relevant information before orders and should verify that such information is current and complete. All products are sold subject to ARK Microelectronics Co., Ltd.'s terms and conditions supplied at the time of order acknowledgement.

ARK Microelectronics Co., Ltd. warrants performance of its hardware products to the specifications at the time of sale. Testing, reliability and quality control are used to the extent ARK Microelectronics Co., Ltd. deems necessary to support this warrantee. Except where agreed upon by contractual agreement, testing of all parameters of each product is not necessary performed.

ARK Microelectronics Co., Ltd. does not assume any liability arising from the use of any product or circuit designs described herein. Customers are responsible for their products and applications using ARK Microelectronics Co., Ltd.'s components. To minimize risk, customers must provide adequate design and operating safeguards.

ARK Microelectronics Co., Ltd. does not warrant or convey any license either expressed or implied under its patent rights, nor the rights of others. Reproduction of information in ARK Microelectronics Co., Ltd.'s data sheets or data books is permissible only if reproduction is without modification or alteration. Reproduction of this information with any alteration is an unfair and deceptive business practice. ARK Microelectronics Co., Ltd. is not responsible or liable for such altered documentation.

Resale of ARK Microelectronics Co., Ltd.'s products with statements different from or beyond the parameters stated by ARK Microelectronics Co., Ltd. for the product or service voids all express or implied warranties for the associated ARK Microelectronics Co., Ltd.'s product or service and is unfair and deceptive business practice. ARK Microelectronics Co., Ltd. is not responsible or liable for any such statements.

---

### Life Support Policy:

ARK Microelectronics Co., Ltd.'s products are not authorized for use as critical components in life support devices or systems without the express written approval of ARK Microelectronics Co., Ltd.

As used herein:

1. Life support devices or systems are devices or systems which:
    - a. Are intended for surgical implant into the human body,
    - b. Support or sustain life, or
    - c. When used in accordance with instructions provided in their labeling, whose failure to perform can be reasonably expected to result in significant injury to the patient.
  2. A critical component is any component of a life support device or system whose failure to perform can be reasonably expected to:
    - a. Cause the failure of the life support device or system, or
    - b. Affect its safety or effectiveness.
-