


规 格 书

SPECIFICATION

客户 CUSTOMER	立创商城
客户料号 CUSTOMER P/N	
规格描述 DESCRIPTION	3600V/5.5*6/1.5KA/10次
产品编码 PART NUMBER	3-ACPA2RM-3600A6L2
日期 DATE	2025-08-05

德尔创承认栏 APPROVED BY DERSONIC			客户承认栏 APPROVED BY CUSTOMER	
批 准 APPROVED BY	审 核 CHECK BY	制订 FORMULATE BY	批 准 APPROVED BY	审 核 CHECK BY
				

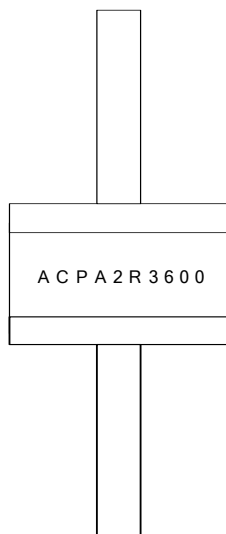
东莞市德尔创电子有限公司

DONGGUAN DERSONIC ELECTRONIC CO., LTD.

中国广东省东莞市寮步镇松湖智谷科技产业园2栋15楼
15/F, Building 2, Songhu Zhigu Science and Technology Industrial Park,
Liaobu Town, Dongguan City, Guangdong Province, China
TEL: +86-769-8533 5208 FAX: +86-769-8155 5989
Website: <http://www.dersonic.com>

		Rev. 1.0	
Product : Gas Discharge Tube	Part No.: 3-ACPA2RM-3600A6L2	Page	1 / 3

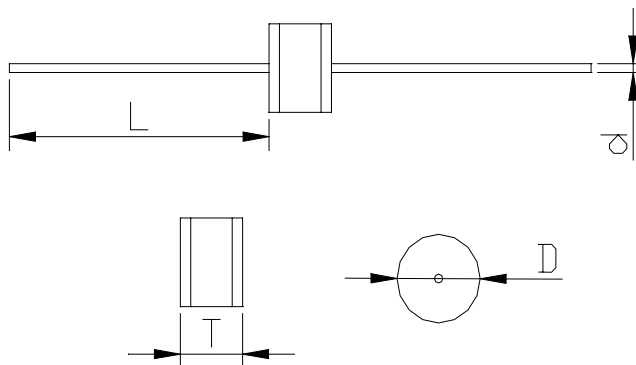
1. MARKING



2. Outline Drawing

Unit: mm

Item	Dimensions
D	5.5 +0.3,-0.5
T	6.0+0.3,-0.5
d	0.8±0.05
L	20min.



				Rev. 1.0	
Product : Gas Discharge Tube		Part No.: 3-ACPA2RM-3600A6L2			Page 2 / 3

3. SPECIFICATION

3.1 ELECTRICAL SPECIFICATION

Model Name	DC Breakdown Voltage	Maximum Impulse Breakdown Voltage		Maximum Impulse Discharge Current (8/20 μ s)		Normal Alternating Discharge Current (A)		Impulse Life 10/1000 μ s (100A)	DC Holdover Voltage (V)	Minimum Insulation Resistance (G Ω)	Maximum Capacitance (pf)
	(V)	(V)		(KA)		(A)		(100A)	(V)	(G Ω)	(pf)
	100V/s	100V/ μ s	1000V/ μ s	1 time	10 times	50Hz, 1sec	Single 9cycles	times	< 150ms	Note1	1MHZ
2RM-3600	3600 \pm 20%	4400	4600	3	1.5	2	4	300	150	1	1

Note1 : UL1449 C-UL 3rd Recognized,File E315423

Note2 : DC Breakdown Voltage DC Measuring Voltage

1000-2000V

500V

2500-4000V

1000V

3.2 Standard Bulk Packaging Specifications

Quantity: 100 pieces per plastic tray

500 pieces per inner box

10 inner boxes per carton

5000 pieces per full carton

		Rev. 1.0	
Product : Gas Discharge Tube	Part No.: 3-ACPA2RM-3600A6L2	Page	3 / 3

4. ELECTRICAL RATING

Item	Test Condition / Description		Requirement
DC Breakdown Voltage	The voltage measured at a rise time of 100v/s.		To meet the specified value
Maximum Impulse Breakdown Voltage	The maximum breakdown voltage at rise times of 100v/us and 1000v/us.		
Maximum Impulse Discharge Current	The maximum current applying a waveform of 8/20us that can be applied across the terminals of the gas tube without causing the gas tube to change more than ±25% from its initial measured DC breakdown voltage. Dwell time between pulses is 3 minutes.		
Alternating Discharge Current	Rated RMS value of AC current at 50Hz, 1 sec. 10 times. Intervals: 3min. DC breakdown voltage may not change more than ±25% from its initial measured DC breakdown voltage. IR > 10 ⁸ ohms (-20%, +30% for 70 – 90V).		
Impulse Life	The minimum number of impulses of a specified waveform and peak current which a gas tube will conduct without causing the gas tube to change more than ±25% from its initial measured DC breakdown voltage. Dwell time between pulses is 1-2 minutes.		
DC Holdover Voltage	The maximum DC voltage across the two terminals of the gas tube under which it may be expected to return to the high impedance state after the gas tube breakdown.		
Insulation Resistance	The resistance of the gas tube shall be measured each terminal to each other terminal.		
	DC Breakdown Voltage	Measuring Voltage	
	70-150V	50V	
	151-400V	100V	
	470-1000V	250V	
	1001-2000V	500V	
	2001-6000V	1000V	
Capacitance	The capacitance of a gas tube shall be measured each terminal to each other terminal. Test frequency: 1MHz In measurements involving 3-electrode gas tubes, the terminal not being tested shall be connected to a ground plane.		