

Surface Mount Fast Recovery Rectifier

Essential information; basic information

Features

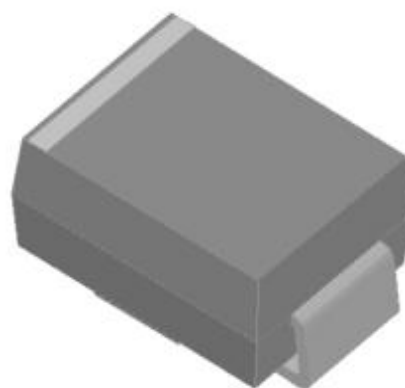
- Low profile package
- Ideal for automated placement
- Glass passivated chip junction

Typical Applications

For use in general purpose rectification of power supplies, inverters, converters, and freewheeling diodes for consumer, and telecommunication.

Mechanical Data

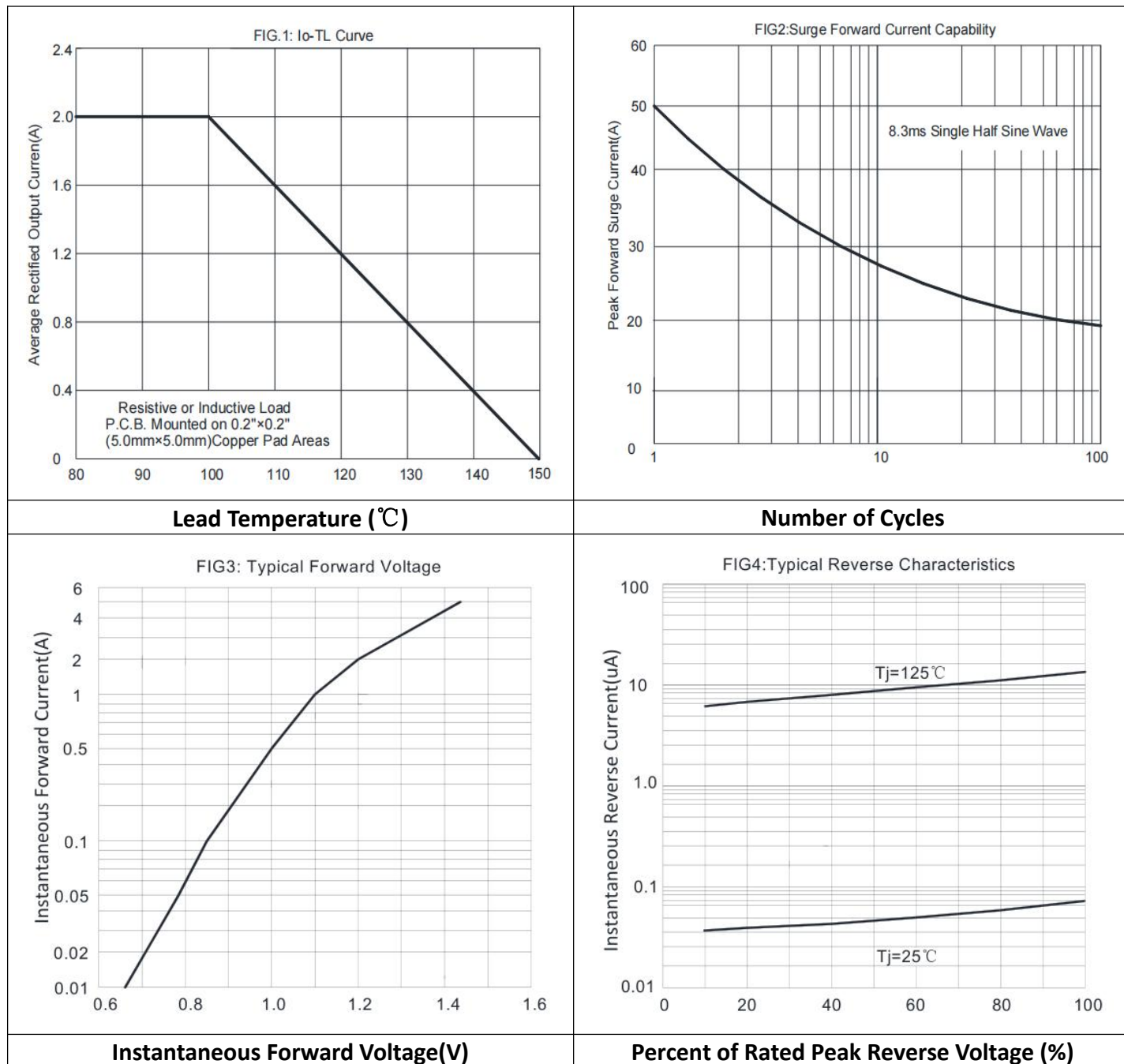
- Package: DO-214AC (SMA)
- Molding compound meets UL 94 V-0 flammability rating, RoHS-compliant
- Terminals: Tin plated leads, solderable per J-STD-002 and JESD22-B102
- Polarity: Cathode line denotes the cathode end



Maximum Ratings (Ta=25°C Unless otherwise specified)

PARAMETER	SYMBOL	UNIT	RS2A	RS2B	RS2D	RS2G	RS2J	RS2K	RS2M
Maximum Repetitive peak reverse voltage	VRRM	V	50	100	200	400	600	800	1000
Maximum RMS Voltage	VRMS	V	35	70	140	280	420	560	700
Maximum DC Blocking Voltage	VDC	V	50	100	200	400	600	800	1000
Average rectified output current @60Hz sine wave, resistance load, TL (Fig.1)	IO	A	2.0						
Forward Surge Current (Non-repetitive) @60Hz Half-sine wave,1 cycle,	IFSM (Tj=25℃)	A	50						
Storage temperature	Tstg	℃	-55 ~ +150						
Junction temperature	Tj	℃	-55 ~ +150						
Maximum instantaneous forward voltage drop per diode	VF (IFM=2.0A)	V	1.35						
Maximum reverse recovery time	Trr:IF=0.5A,IR=1.0A,Irr=0.25A	ns	150				250	500	
Maximum DC reverse current at rated DC blocking voltage per diode	IR (Tj =25℃)	μ A	5						
	IR (Tj =125℃)		100						

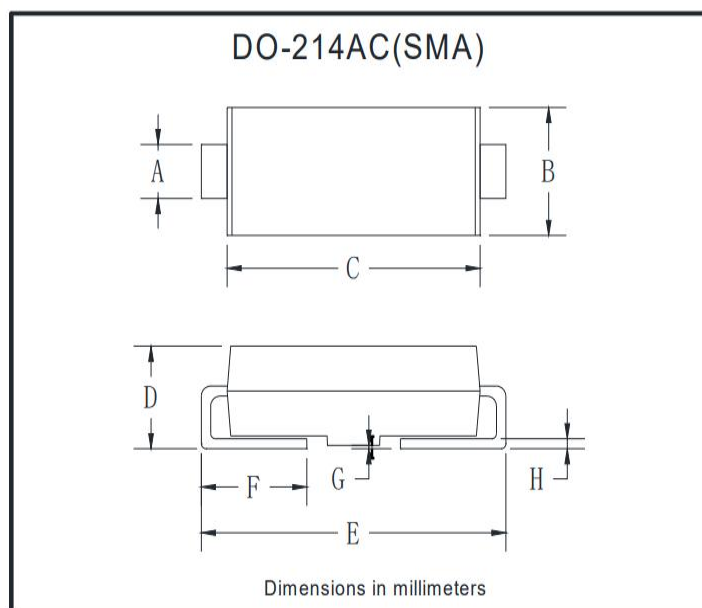
Characteristics (Typical)



Ordering Information (Example)

type specification	manner of packin	MINIMUM PACKAGE(pcs)	INNER BOX QUANTITY(pcs)	OUTER CARTON QUANTITY(pcs)	DELIVERY MODE
RS2A-RS2M (SMA)	T/B	2000	10000	100000	7" reel
	T/B	5000	10000	100000	11" reel
	T/B	5000	10000	100000	13" reel

Outline Dimensions



DO-214AC(SMA)		
Dim	Min	Max
A	1.25	1.58
B	2.40	2.83
C	4.06	4.75
D	1.90	2.30
E	4.93	5.28
F	0.76	1.41
G	0.08	0.20
H	0.15	0.31

Disclaimer

The information presented in this document is for reference only. right to make changes without notice for the specification of the products displayed herein to improve reliability, function or design or otherwise.

The product listed herein is designed to be used with ordinary electronic equipment or devices, and not designed to be used with equipment or devices which require high level of reliability and the malfunction of which would directly endanger human life (such as medical instruments, transportation equipment, aerospace machinery, nuclear-reactor controllers, fuel controllers and other safety devices), Chenglitai or anyone on its behalf, assumes no responsibility or liability for any damages resulting from such improper use of sale.

This publication supersedes & replaces all information previously supplied. or consult your nearest Chenglitai's sales office for further assistance.