

SS22 THRU SS220

Surface Mount Schottky Rectifier

Essential information; basic information

Features

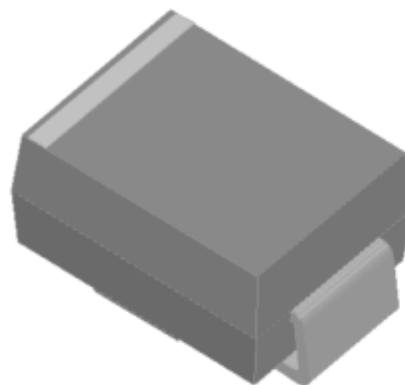
- Low profile package
- Ideal for automated placement
- Glass passivated chip junction

Typical Applications

For use in general purpose rectification of powersupplies, inverters, converters, and freewheeling diodes for consumer, and telecommunication.

Mechanical Data

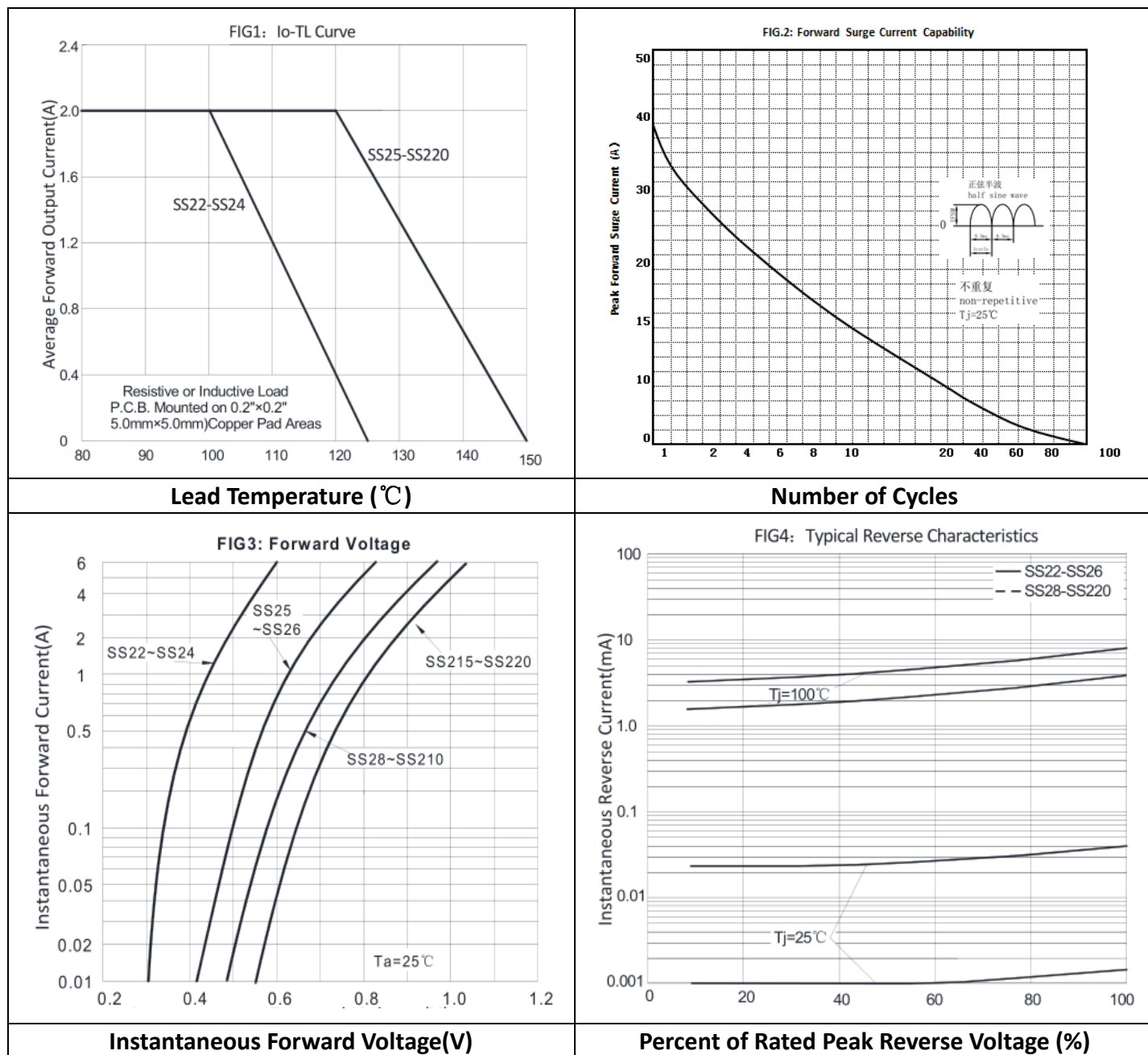
- Package: DO-214AA (SMB)
- Molding compound meets UL 94 V-0 flammabilityrating, RoHS-compliant
- Terminals: Tin plated leads, solderable perJ-STD-002 and JESD22-B102
- Polarity: Cathode line denotes the cathode end



Maximum Ratings (Ta=25℃ Unless otherwise specified)

PARAMETER	SYMBOL	UNIT	SS22B	SS24B	SS26B	SS28B	SS210B	SS215B	SS220B
			SS22	SS24	SS26	SS28	SS210	SS215	SS220
Maximum Repetitive peak reverse voltage	VRRM	V	20	40	60	80	100	150	200
Average rectified output current@60Hz sine wave, resistance load, TL (Fig.1)	IO	A	2.0						
Forward Surge Current (Non-repetitive)@60Hz Half-sine wave,1 cycle, Tj=25℃	IFSM	A	40						
Storage temperature	Tstg	℃	-55 ~ +150						
Junction temperature	Tj	℃	-55 ~ +125		-55 ~ +150				
Maximum instantaneous forward voltage drop per diode	VF (IFM=2.0A)	V	0.6		0.7	0.85		0.95	
Maximum DC reverse current at rated DC blocking voltage per diode @VRM=VRRM	IR (Tj =25℃)	mA	0.5			0.1			
	IR (Tj =100℃)		10			5			

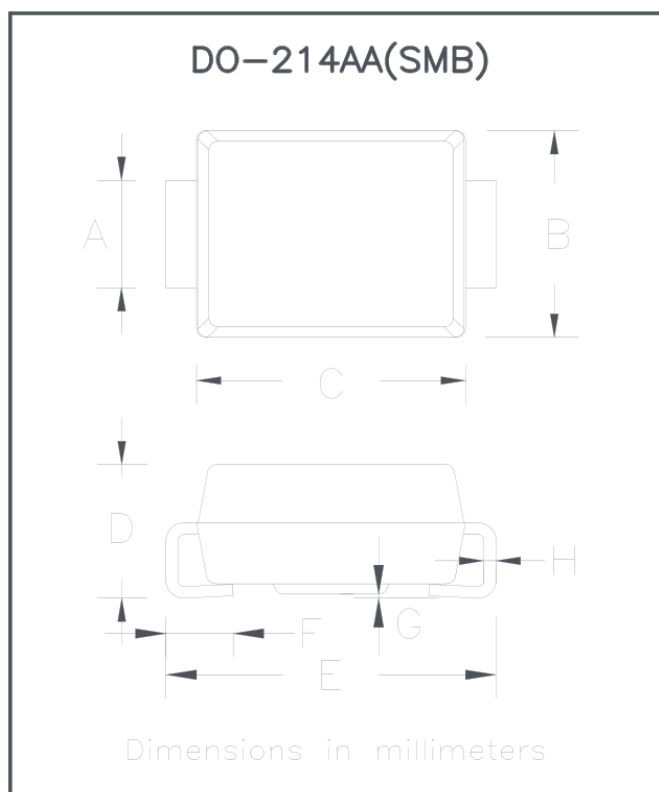
Characteristics (Typical)



Ordering Information (Example)

type specification	manner of packin	MINIMUM PACKAGE(pcs)	INNER BOX QUANTITY(pcs)	OUTER CARTON QUANTITY(pcs)	DELIVERY MODE
SS22-SS220 (SMB)	T/B	3000	6000	60000	13" reel

Outline Dimensions



DO-214AA(SMB)		
Dim	Min	Max
A	1.85	2.15
B	3.30	3.94
C	4.05	4.75
D	1.99	2.61
E	5.21	5.59
F	0.90	1.41
G	0.10	0.20
H	0.15	0.31

Disclaimer

The information presented in this document is for reference only. right to make changes without notice for the specification of the products displayed herein to improve reliability, function or design or otherwise.

The product listed herein is designed to be used with ordinary electronic equipment or devices, and not designed to be used with equipment or devices which require high level of reliability and the malfunction of which would directly endanger human life (such as medical instruments, transportation equipment, aerospace machinery, nuclear-reactor controllers, fuel controllers and other safety devices), chenglitai or anyone on its behalf, assumes no responsibility or liability for any damages resulting from such improper use of sale.

This publication supersedes & replaces all information previously supplied. or consult your nearest chenglitai's sales office for further assistance.