

ABS22 THRU ABS210

Bridge rectifier

Essential information; basic information

Features

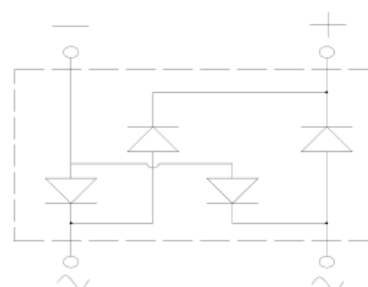
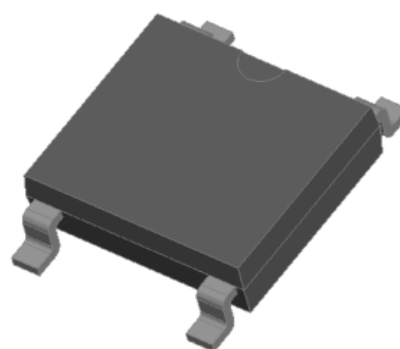
- Ideal for automated placement
- High surge current capability
- Meets MSL level 1, per J-STD-020, LF maximum peak of 260 °C

Typical Applications

General purpose use in AC/DC bridge full wave rectification for SMPS, lighting ballast, adapter, battery charger, home appliances, office equipment, and telecommunication applications.

Mechanical Data

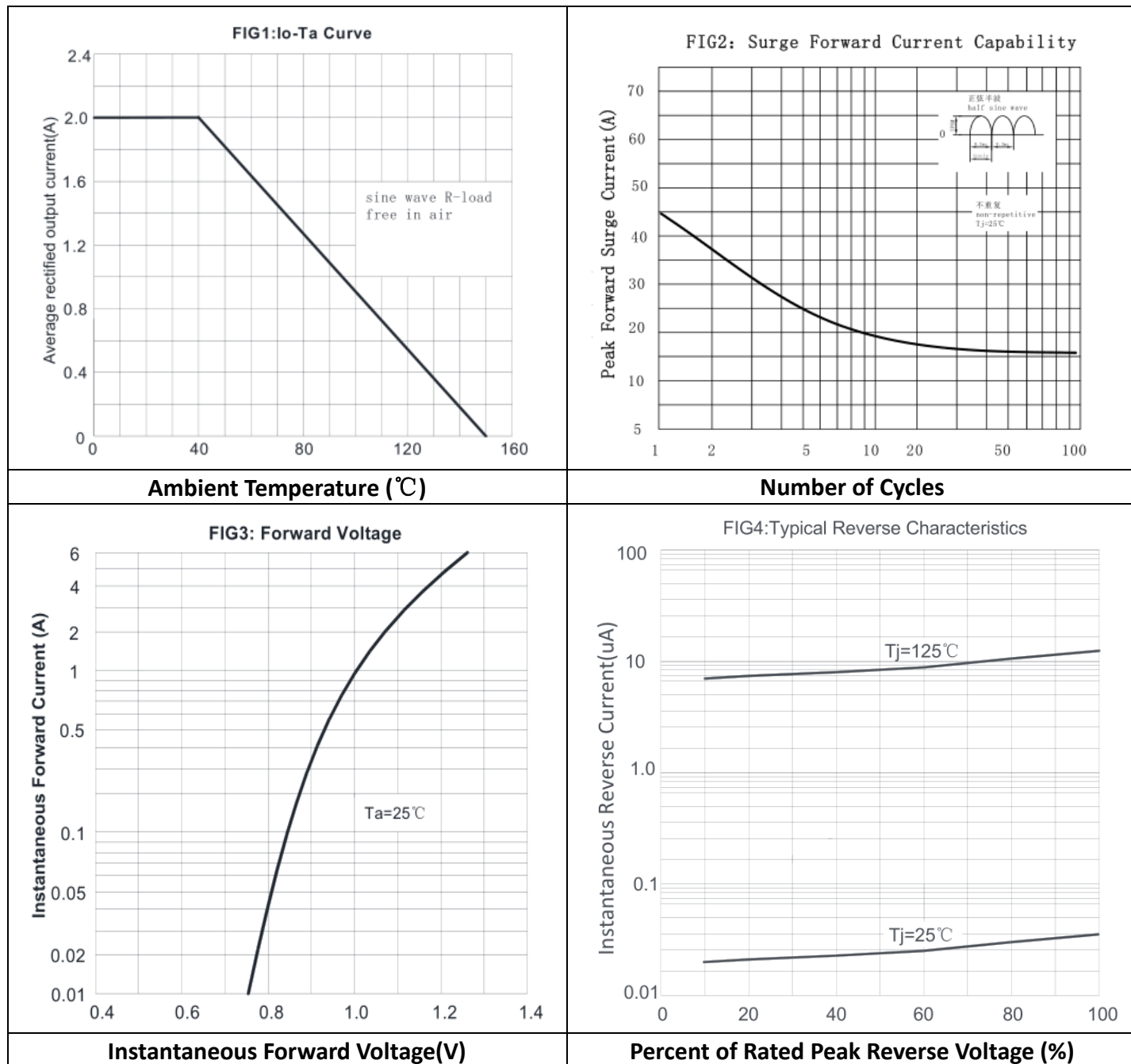
- Package: ABS
- Molding compound meets UL 94 V-0 flammability rating,
- Terminals: Tin plated leads, solderable per J-STD-002 and JESD22-B102
 - Polarity: As marked on body



Maximum Ratings (Ta=25 °C Unless otherwise specified)

PARAMETER	SYMBOL	UNIT	ABS22	ABS24	ABS26	ABS28	ABS210
Maximum Repetitive peak reverse voltage	VRRM	V	200	400	600	800	1000
Average rectified output current @60Hz sine wave, resistance load, TL (Fig.1)	IO	A	2.0				
Forward Surge Current (Non-repetitive) @60Hz Half-sine wave, 1 cycle,	IFSM (Tj=25 °C)	A	45				
Storage temperature	Tstg	°C	-55 ~ +150				
Junction temperature	Tj	°C	-55 ~ +150				
Maximum instantaneous forward voltage drop per diode	VF (IFM=2A)	V	1.1				
Maximum DC reverse current at rated DC blocking voltage per diode	IR (Tj =25 °C)	μ A	5				

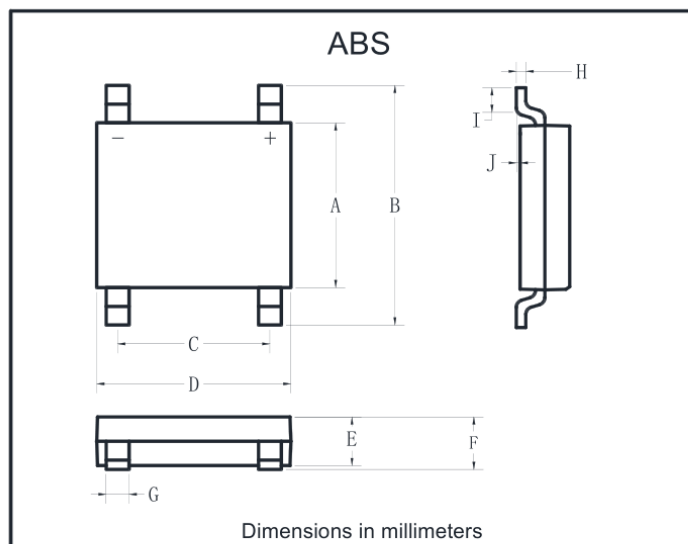
Characteristics (Typical)



Ordering Information (Example)

type specification	manner of packin	MINIMUM PACKAGE(pcs)	INNER BOX QUANTITY(pcs)	OUTER CARTON QUANTITY(pcs)	DELIVERY MODE
ABS22-ABS210 (ABS)	T/B	5000	10000	100000	13" reel

Outline Dimensions



ABS		
Dim	Min	Max
A	4.30	4.50
B	6.00	6.40
C	3.90	4.10
D	4.90	5.10
E	1.25	1.45
F	1.60 Max	
G	0.60	0.70
H	0.15	0.25
I	0.30	0.80
J	0.02	0.15

Disclaimer

The information presented in this document is for reference only. right to make changes without notice for the specification of the products displayed herein to improve reliability, function or designor otherwise.

The product listed herein is designed to be used with ordinary electronic equipment or devices, and not designed to be used withequipment or devices which require high level of reliability and the malfunction of with would directly endanger human life (such asmedical instruments, transportation equipment, aerospace machinery, nuclear-reactor controllers, fuel controllers and other safetydevices), chenglitai or anyone on its behalf, assumes no responsibility or liability for any damages resulting from such improper useof sale.

This publication supersedes & replaces all information previously supplied. or consult your nearest chenglitai's sales office for further assistance.