

Bidirectional TVS Diode

Description

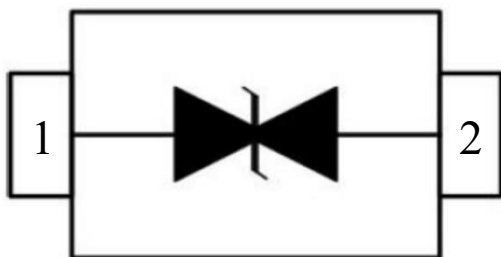
The SDxxC Series is designed for applications requiring transient overvoltage protection capability. They are intended for use in voltage and ESD sensitive equipment such as computers, printers, business machines, communication systems, medical equipment and other applications. These devices are ideal for situations where board space is at a premium.

This series has been specifically designed to protect sensitive components which are connected to power data and transmission lines from overvoltage caused by ESD(electrostatic discharge), CDE (Cable Discharge Events),and EFT (electrical fast transients).

Ordering Information

- Device:SDxxC
- Package:SOD-323
- Material:Halogen free and RoHS compliant
- Packing:Tape & Reel
- Quantity per reel:3000pcs

Pin Configuration



Features

- IEC61000-4-2(ESD) $\pm 30\text{kV}$ (air)
 $\pm 30\text{kV}$ (contact)
- IEC61000-4-4(EFT) 40A (5/50ns)
- Peak power dissipation: 450W($t_p=8/20\mu\text{s}$)
- Protects two bidirectional lines
- Low clamping voltage
- Working voltage: 3.3V to 36V
- Low leakage current

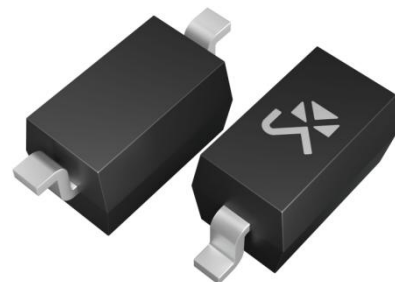
Mechanical Data

- SOD-323 package
- Flammability rating: UL 94V-0
- Packaging: Tape and Reel
- High temperature soldering guaranteed: 260°C/10s
- Reel size: 7 inch
- MSL 1

Applications

- Cell Phone Handsets and Accessories
- Microprocessor based equipment
- Personal Digital Assistants(PDA's)
- Notebooks, Desktops, and Servers
- Portable Instrumentation
- Networking and Telecom
- Serial and Parallel Ports
- Peripherals

Package Outline



Absolute Maximum Rating

Parameter	Symbol	Value	Units
ESD per IEC 61000-4-2(Air)	V_{ESD}	± 30	kV
ESD per IEC 61000-4-2(Contact)		± 30	
Peak Pulse Power(8/20 μ s)	P_{PP}	450	W
Operating Temperature	T_{OPT}	-55~+150	°C
Storage Temperature	T_{STG}	-55~+150	°C
Lead Soldering Temperature	T_L	260(10 sec.)	°C

Electrical Characteristics ($T_A=25^{\circ}\text{C}$)

Part Number	Device Marking	V_{RWM} (V) (max.)	V_B (V) (min.)	I_T (mA)	$V_{C@1A}$ (V) (max.)	V_C (V) (max.) (@A)		I_R (μ A) (max.)	C_J (pF) (max.)
SD03C	2A	3.3	4.0	1	7.5	16.0	25	40	200
SD05C	2B	5.0	6.0	1	9.8	18.0	24	10	100
SD08C	2C	8.0	8.5	1	13.4	24.0	20	2	90
SD12C	2D	12.0	13.3	1	19.0	32.0	17	1	50
SD15C	2J	15.0	16.7	1	24.0	38.0	13	1	40
SD18C	2K	18.0	20.0	1	29.0	45.0	10	1	35
SD20C	2L	20.0	22.3	1	35.0	50.0	9	1	30
SD24C	2H	24.0	26.7	1	43.0	52.0	9	1	25
SD36C	2N	36.0	40.0	1	60.0	75.0	6	1	20

Electrical Characteristics Curve

Fig1. 8/20us Pulse Waveform

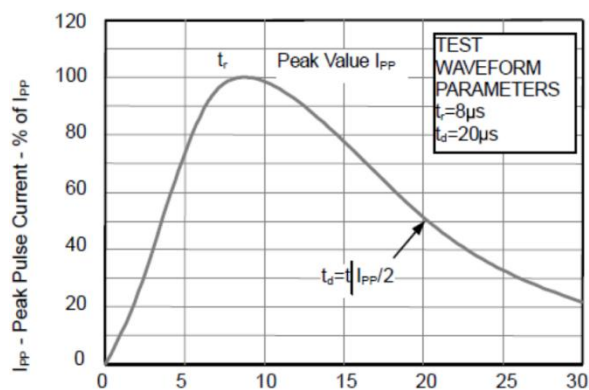


Fig2. Contact Discharge Current Waveform (IEC 61000-4-2)

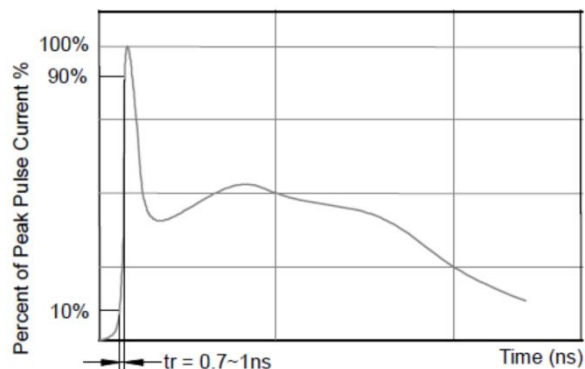


Fig3 Voltage vs Capacitance

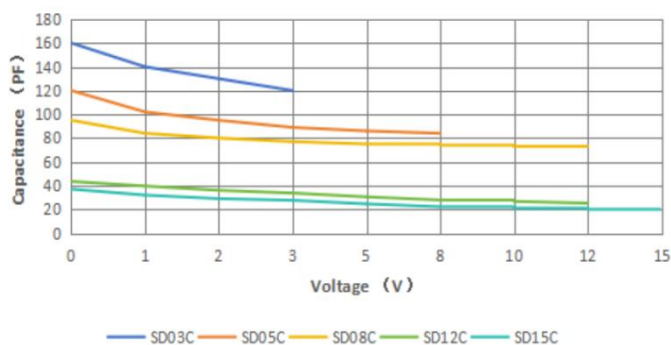


Fig4 Voltage vs Capacitance

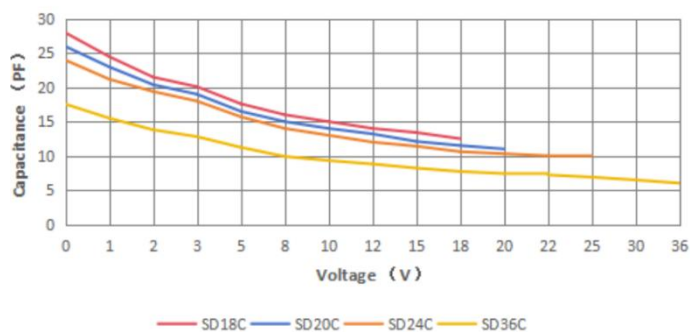


Fig5 Clamping Voltage vs Peak Pulse Current

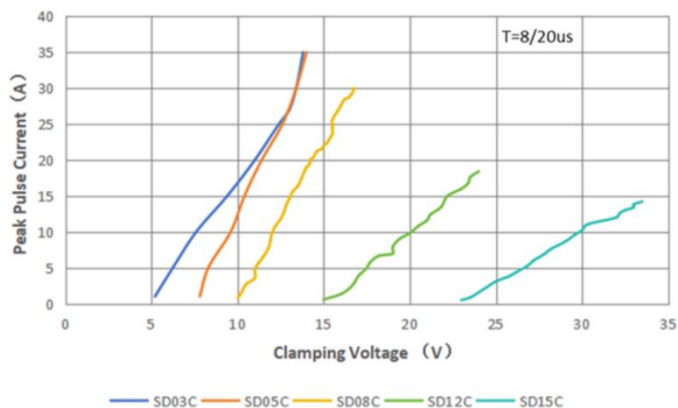
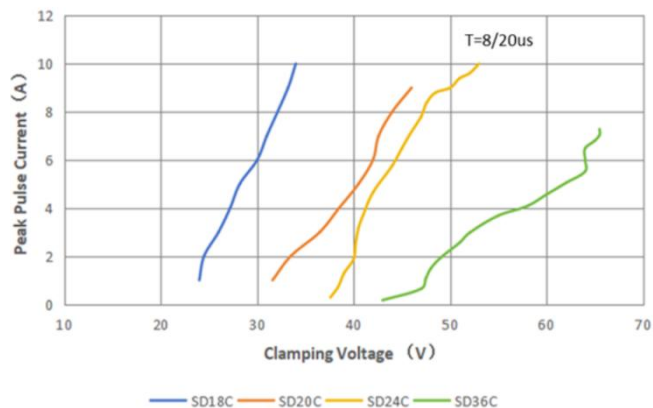


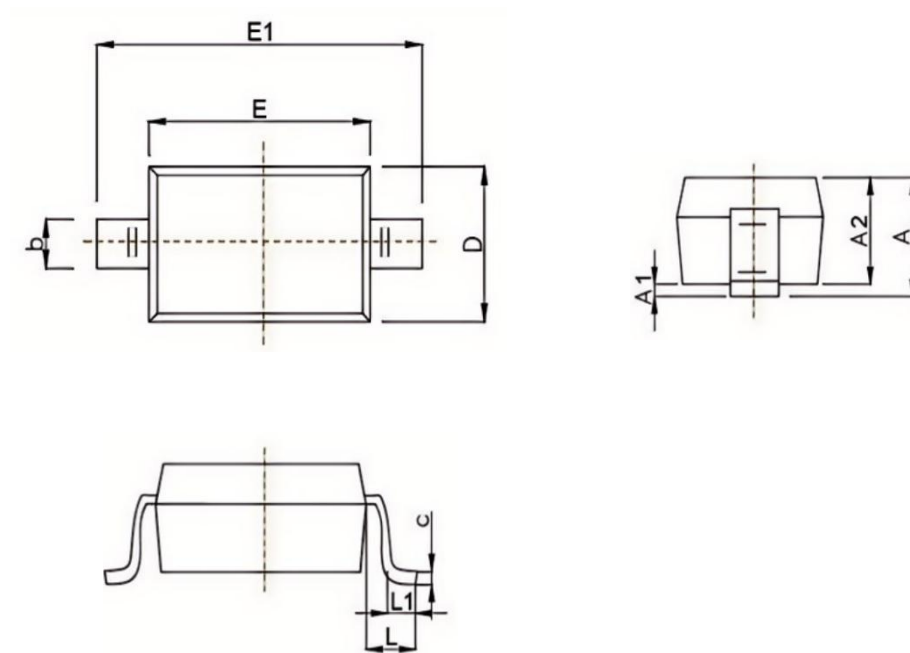
Fig6 Clamping Voltage vs Peak Pulse Current



Package Information

SOD-323

Dimensions in mm



Symbol	Dimensions In Millimeters	
	Min	Max
A		1.00
A1	0.000	0.100
A2	0.800	0.900
b	0.250	0.350
c	0.080	0.150
D	1.200	1.400
E	1.600	1.800
E1	2.500	2.700
e	1.800	2.040
L	0.475 REF	
L1	0.250	0.400
θ	0°	8°

Shikues Disclaimer

1.Accuracy of Information and Right to Modify

The information provided in this document is for reference only. Shikues reserves the right to make changes to this document and to the specifications of the products described herein at any time, without prior notice, for the purpose of improving reliability, function, design, or for any other reason. It is the customer's responsibility to obtain and verify the latest product information and specifications before making any final design, procurement, or usage decisions.

2.No Warranty

Shikues makes no express or implied warranties, representations, or guarantees regarding the suitability of its products for any particular purpose.

Shikues assumes no liability for any assistance provided or for the design of customer products. All products are supplied "as is."

3.Intended Use and Limitation of Liability

The products described in this document are intended for use in general-purpose electronic devices. They are neither designed nor tested nor authorized for use in transportation equipment or applications requiring high reliability. Unless expressly authorized in writing by Shikues, these products must not be used as critical components in life-support systems or any applications where failure could directly pose a risk to human life (including, but not limited to, medical devices, transportation systems, aerospace equipment, nuclear facilities, and safety-critical systems).

Shikues assumes no responsibility or liability for any consequences arising from the use of its products in unauthorized or unintended applications.

Neither Shikues nor its representatives shall be held liable for any resulting damages.

4.Intellectual Property

This document does not grant any express or implied license—whether by estoppel, implication, or otherwise—to use any intellectual property rights of Shikues.