

3-Terminal 1 A Positive Voltage Regulator

Description

The LM78MxxA series of three-terminal positive regulators are available in the TO-252-2 package with several fixed output voltages making it useful in a wide range of applications.

Features

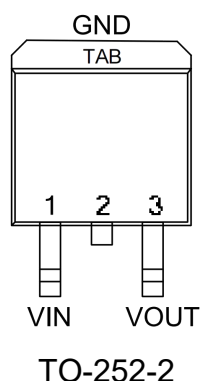
- Output Current up to 1A
- Output Voltages of 5, 6, 8, 9, 12, 15, 18, 24V
- Thermal Overload Protection
- Short Circuit Protection
- Output Transistor Safe Operating Area (SOA)Protection



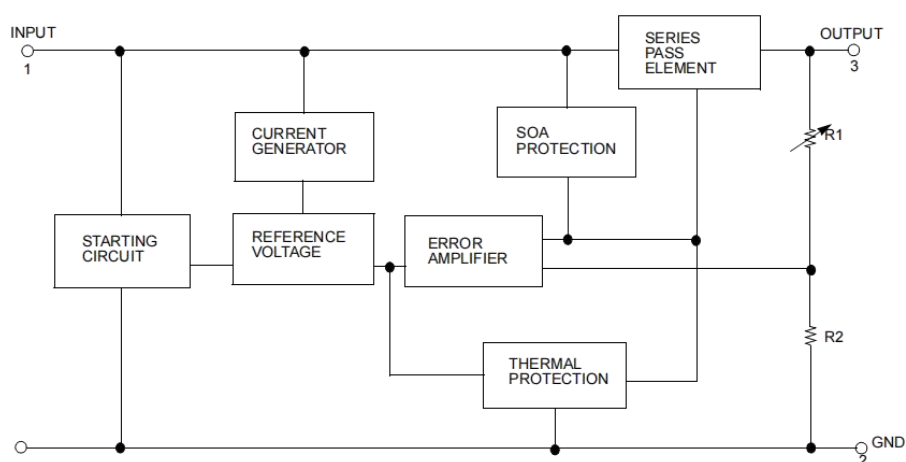
Ordering Information

DEVICE	Package Type	MARKING	Packing	Packing Qty
LM78M05ADT/TR	TO-252-2	78M05A	REEL	2500pcs/reel
LM78M06ADT/TR	TO-252-2	78M06A	REEL	2500pcs/reel
LM78M08ADT/TR	TO-252-2	78M08A	REEL	2500pcs/reel
LM78M09ADT/TR	TO-252-2	78M09A	REEL	2500pcs/reel
LM78M12ADT/TR	TO-252-2	78M12A	REEL	2500pcs/reel
LM78M15ADT/TR	TO-252-2	78M15A	REEL	2500pcs/reel
LM78M18ADT/TR	TO-252-2	78M18A	REEL	2500pcs/reel
LM78M24ADT/TR	TO-252-2	78M24A	REEL	2500pcs/reel

Pin Configuration



Internal Block Diagram



Absolute Maximum Ratings

Parameter	Symbol	Value	Unit
Input Voltage (for $V_O = 5V$ to $18V$)	V_I	35	V
(for $V_O = 24V$)	V_I	40	V
Thermal Resistance Junction-Case TO-252-2 ($T_c = +25^\circ C$)	$R_{\theta JC}$	2.5	$^\circ C/W$
Thermal Resistance Junction-Air TO-252-2 ($T_a = +25^\circ C$)	$R_{\theta JA}$	92	$^\circ C/W$
Operating Junction Temperature Range	T_{OPR}	$0 \sim +125$	$^\circ C$
Storage Temperature Range	T_{STG}	$-65 \sim +150$	$^\circ C$
Lead Temperature (Soldering, 10 seconds)	T_L	260	$^\circ C$

Note: Absolute Maximum Ratings indicate limits beyond which damage to the device may occur. Operating Ratings indicate conditions for which the device is intended to be functional, but specific performance is not ensured.

Electrical Characteristics (LM78M05A)

(Refer to the test circuits, $-40 < T_J < +85^{\circ}\text{C}$, $I_O = 1\text{A}$, $V_I = 10\text{V}$, unless otherwise specified, $C_I = 0.33\mu\text{F}$, $C_O = 0.1\mu\text{F}$)

Parameter	Symbol	Conditions	Min.	Typ.	Max.	Unit
Output Voltage	V_O	$T_J = +25^{\circ}\text{C}$	4.8	5	5.2	V
		$I_O = 5\text{mA to } 1\text{A}$ $V_I = 7\text{V to } 20\text{V}$	4.75	5	5.25	
Line Regulation (Note3)	ΔV_O	$I_O = 200\text{mA}$ $V_I = 7\text{V to } 25\text{V}$	-	-	100	mV
		$T_J = +25^{\circ}\text{C}$ $V_I = 8\text{V to } 25\text{V}$	-	-	50	
Load Regulation (Note3)	ΔV_O	$I_O = 5\text{mA to } 0.5\text{A}$, $T_J = +25^{\circ}\text{C}$	-	-	100	mV
		$I_O = 5\text{mA to } 200\text{mA}$, $T_J = +25^{\circ}\text{C}$	-	-	50	
Quiescent Current	I_Q	$T_J = +25^{\circ}\text{C}$	-	4.0	6.0	mA
Quiescent Current Change	ΔI_Q	$I_O = 5\text{mA to } 350\text{mA}$	-	-	0.5	mA
		$I_O = 200\text{mA}$ $V_I = 8\text{V to } 25\text{V}$	-	-	0.8	
Output Voltage Drift	$\Delta V/\Delta T$	$I_O = 5\text{mA}$ $T_J = -40 \text{ to } +85^{\circ}\text{C}$	-	-0.5	-	mV/ $^{\circ}\text{C}$
Output Noise Voltage	V_N	$f = 10\text{Hz to } 100\text{kHz}$	-	40	-	$\mu\text{V}/V_O$
Ripple Rejection	RR	$f = 120\text{Hz}$, $I_O = 300\text{mA}$ $V_I = 8\text{V to } 18\text{V}$, $T_J = +25^{\circ}\text{C}$	-	80	-	dB
Dropout Voltage	V_D	$T_J = +25^{\circ}\text{C}$, $I_O = 500\text{mA}$	-	2	-	V
Short Circuit Current	ISC	$T_J = +25^{\circ}\text{C}$, $V_I = 35\text{V}$	-	300	-	mA
Peak Current	IPK	$T_J = +25^{\circ}\text{C}$	-	700	-	mA

Note:

Load and line regulation are specified at constant junction temperature. Change in V_O due to heating effects must be taken into account separately. Pulse testing with low duty is used.

Electrical Characteristics (LM78M06A) (Continued)

(Refer to the test circuits, $-40 < T_J < +85^{\circ}\text{C}$, $I_O = 1\text{A}$, $V_I = 11\text{V}$, unless otherwise specified, $C_I = 0.33\mu\text{F}$, $C_O = 0.1\mu\text{F}$)

Parameter	Symbol	Conditions	Min.	Typ.	Max.	Unit
Output Voltage	V_O	$T_J = +25^{\circ}\text{C}$	5.75	6	6.25	V
		$I_O = 5\text{mA to } 1\text{A}$ $V_I = 8\text{V to } 21\text{V}$	5.7	6	6.3	
Line Regulation (Note1)	ΔV_O	$I_O = 200\text{mA}$ $V_I = 8\text{V to } 25\text{V}$	-	-	100	mV
		$T_J = +25^{\circ}\text{C}$ $V_I = 9\text{V to } 25\text{V}$	-	-	50	
Load Regulation (Note1)	ΔV_O	$I_O = 5\text{mA to } 0.5\text{A}$, $T_J = +25^{\circ}\text{C}$	-	-	120	mV
		$I_O = 5\text{mA to } 200\text{mA}$, $T_J = +25^{\circ}\text{C}$	-	-	60	
Quiescent Current	I_Q	$T_J = +25^{\circ}\text{C}$	-	4.0	6.0	mA
Quiescent Current Change	ΔI_Q	$I_O = 5\text{mA to } 350\text{mA}$	-	-	0.5	mA
		$I_O = 200\text{mA}$ $V_I = 9\text{V to } 25\text{V}$	-	-	0.8	
Output Voltage Drift	$\Delta V/\Delta T$	$I_O = 5\text{mA}$ $T_J = -40 \text{ to } +85^{\circ}\text{C}$	-	-0.5	-	mV/ $^{\circ}\text{C}$
Output Noise Voltage	V_N	$f = 10\text{Hz to } 100\text{kHz}$	-	45	-	$\mu\text{V}/V_O$
Ripple Rejection	RR	$f = 120\text{Hz}$, $I_O = 300\text{mA}$ $V_I = 9\text{V to } 19\text{V}$, $T_J = +25^{\circ}\text{C}$	-	80	-	dB
Dropout Voltage	V_D	$T_J = +25^{\circ}\text{C}$, $I_O = 500\text{mA}$	-	2	-	V
Short Circuit Current	ISC	$T_J = +25^{\circ}\text{C}$, $V_I = 35\text{V}$	-	300	-	mA
Peak Current	IPK	$T_J = +25^{\circ}\text{C}$	-	700	-	mA

Note:

1. Load and line regulation are specified at constant junction temperature. Change in V_O due to heating effects must be taken into account separately. Pulse testing with low duty is used.

Electrical Characteristics (LM78M08A) (Continued)

(Refer to the test circuits, $-40 < T_J < +85^{\circ}\text{C}$, $I_O=1\text{A}$, $V_I=14\text{V}$, unless otherwise specified, $C_I = 0.33\mu\text{F}$, $C_O=0.1\mu\text{F}$)

Parameter	Symbol	Conditions	Min.	Typ.	Max.	Unit
Output Voltage	V_O	$T_J = +25^{\circ}\text{C}$	7.7	8	8.3	V
		$I_O = 5\text{mA to } 1\text{A}$, $V_I = 10.5\text{V to } 23\text{V}$	7.6	8	8.4	
Line Regulation (Note1)	ΔV_O	$I_O = 200\text{mA}$, $T_J = +25^{\circ}\text{C}$	-	-	100	mV
		$V_I = 10.5\text{V to } 25\text{V}$ $V_I = 11\text{V to } 25\text{V}$	-	-	50	
Load Regulation (Note1)	ΔV_O	$I_O = 5\text{mA to } 0.5\text{A}$, $T_J = +25^{\circ}\text{C}$	-	-	160	mV
		$I_O = 5\text{mA to } 200\text{mA}$, $T_J = +25^{\circ}\text{C}$	-	-	80	
Quiescent Current	I_Q	$T_J = +25^{\circ}\text{C}$	-	4.0	6.0	mA
Quiescent Current Change	ΔI_Q	$I_O = 5\text{mA to } 350\text{mA}$	-	-	0.5	mA
		$I_O = 200\text{mA}$, $V_I = 10.5\text{V to } 25\text{V}$	-	-	0.8	
Output Voltage Drift	RR	$I_O = 5\text{mA}$, $T_J = -40 \text{ to } +85^{\circ}\text{C}$	-	-0.5	-	mV/ $^{\circ}\text{C}$
Output Noise Voltage	V_N	$f = 10\text{Hz to } 100\text{kHz}$	-	52	-	$\mu\text{V}/V_O$
Ripple Rejection	RR	$f = 120\text{Hz}$, $I_O = 300\text{mA}$, $V_I = 11.5\text{V to } 21.5\text{V}$, $T_J = +25^{\circ}\text{C}$	-	80	-	dB
Dropout Voltage	V_D	$T_J = +25^{\circ}\text{C}$, $I_O = 500\text{mA}$	-	2	-	V
Short Circuit Current	ISC	$T_J = +25^{\circ}\text{C}$, $V_I = 35\text{V}$	-	300	-	mA
Peak Current	IPK	$T_J = +25^{\circ}\text{C}$	-	700	-	mA

Note:

1. Load and line regulation are specified at constant junction temperature. Change in V_O due to heating effects must be taken into account separately. Pulse testing with low duty is used.

Electrical Characteristics (LM78M09A) (Continued)

(Refer to the test circuits, $-40 < T_J < +85^{\circ}\text{C}$, $I_O=1\text{A}$, $V_I=15\text{V}$, unless otherwise specified, $C_I = 0.33\mu\text{F}$, $C_O=0.1\mu\text{F}$)

Parameter	Symbol	Conditions	Min.	Typ.	Max.	Unit
Output Voltage	V_O	$T_J = +25^{\circ}\text{C}$	8.65	9	9.35	V
		$I_O = 5\text{mA to } 1\text{A}$, $V_I = 11.5\text{V to } 25\text{V}$	8.55	9	9.45	
Line Regulation (Note1)	ΔV_O	$I_O = 200\text{mA}$, $T_J = +25^{\circ}\text{C}$	-	-	100	mV
		$V_I = 11.5\text{V to } 25\text{V}$ $V_I = 12\text{V to } 25\text{V}$	-	-	50	
Load Regulation (Note1)	ΔV_O	$I_O = 5\text{mA to } 0.5\text{A}$, $T_J = +25^{\circ}\text{C}$	-	-	180	mV
		$I_O = 5\text{mA to } 200\text{mA}$, $T_J = +25^{\circ}\text{C}$	-	-	90	
Quiescent Current	I_Q	$T_J = +25^{\circ}\text{C}$	-	4.6	6.0	mA
Quiescent Current Change	ΔI_Q	$I_O = 5\text{mA to } 350\text{mA}$	-	-	0.5	mA
		$I_O = 200\text{mA}$, $V_I = 11.5\text{V to } 25\text{V}$	-	-	0.8	
Output Voltage Drift	RR	$I_O = 5\text{mA}$, $T_J = -40 \text{ to } +85^{\circ}\text{C}$	-	-0.8	-	mV/ $^{\circ}\text{C}$
Output Noise Voltage	V_N	$f = 10\text{Hz to } 100\text{kHz}$	-	60	-	$\mu\text{V}/V_O$
Ripple Rejection	RR	$f = 120\text{Hz}$, $I_O = 300\text{mA}$, $V_I = 11.5\text{V to } 21.5\text{V}$, $T_J = +25^{\circ}\text{C}$	-	80	-	dB
Dropout Voltage	V_D	$T_J = +25^{\circ}\text{C}$, $I_O = 500\text{mA}$	-	2	-	V
Short Circuit Current	ISC	$T_J = +25^{\circ}\text{C}$, $V_I = 35\text{V}$	-	300	-	mA
Peak Current	IPK	$T_J = +25^{\circ}\text{C}$	-	700	-	mA

Note:

1. Load and line regulation are specified at constant junction temperature. Change in V_O due to heating effects must be taken into account separately. Pulse testing with low duty is used.

Electrical Characteristics (LM78M12A) (Continued)

(Refer to the test circuits, $-40 < T_J < +85^{\circ}\text{C}$, $I_O=1\text{A}$, $V_I=19\text{V}$, unless otherwise specified, $C_I=0.33\mu\text{F}$, $C_O=0.1\mu\text{F}$)

Parameter	Symbol	Conditions	Min.	Typ.	Max.	Unit
Output Voltage	V_O	$T_J = +25^{\circ}\text{C}$	11.5	12	12.5	V
		$I_O = 5\text{mA to } 1\text{A}$, $V_I = 14.5\text{V to } 27\text{V}$	11.4	12	12.6	
Line Regulation (Note1)	ΔV_O	$I_O = 200\text{mA}$, $T_J = +25^{\circ}\text{C}$, $V_I = 14.5\text{V to } 30\text{V}$	-	-	100	mV
		$V_I = 16\text{V to } 30\text{V}$	-	-	50	
Load Regulation (Note1)	ΔV_O	$I_O = 5\text{mA to } 0.5\text{A}$, $T_J = +25^{\circ}\text{C}$	-	-	240	mV
		$I_O = 5\text{mA to } 200\text{mA}$, $T_J = +25^{\circ}\text{C}$	-	-	120	
Quiescent Current	I_Q	$T_J = +25^{\circ}\text{C}$	-	4.1	6.0	mA
Quiescent Current Change	ΔI_Q	$I_O = 5\text{mA to } 350\text{mA}$	-	-	0.5	mA
		$I_O = 200\text{mA}$, $V_I = 14.5\text{V to } 30\text{V}$	-	-	0.8	
Output Voltage Drift	$\Delta V/\Delta T$	$I_O = 5\text{mA}$, $T_J = -40 \text{ to } +85^{\circ}\text{C}$	-	-0.5	-	mV/ $^{\circ}\text{C}$
Output Noise Voltage	V_N	$f = 10\text{Hz to } 100\text{kHz}$	-	75	-	$\mu\text{V}/V_O$
Ripple Rejection	RR	$f = 120\text{Hz}$, $I_O = 300\text{mA}$, $V_I = 15\text{V to } 25\text{V}$, $T_J = +25^{\circ}\text{C}$	-	80	-	dB
Dropout Voltage	V_D	$T_J = +25^{\circ}\text{C}$, $I_O = 500\text{mA}$	-	2	-	V
Short Circuit Current	ISC	$T_J = +25^{\circ}\text{C}$, $V_I = 35\text{V}$	-	300	-	mA
Peak Current	IPK	$T_J = +25^{\circ}\text{C}$	-	700	-	mA

Note:

1. Load and line regulation are specified at constant junction temperature. Change in V_O due to heating effects must be taken into account separately. Pulse testing with low duty is used.

Electrical Characteristics (LM78M15A) (Continued)

(Refer to the test circuits, $-40 < T_J < +85^{\circ}\text{C}$, $I_O=1\text{A}$, $V_I=23\text{V}$, unless otherwise specified, $C_I=0.33\mu\text{F}$, $C_O=0.1\mu\text{F}$)

Parameter	Symbol	Conditions	Min.	Typ.	Max.	Unit
Output Voltage	V_O	$T_J = +25^{\circ}\text{C}$	14.4	15	15.6	V
		$I_O = 5\text{mA to } 1\text{A}$, $V_I = 17.5\text{V to } 30\text{V}$	14.25	15	15.75	
Line Regulation (Note1)	ΔV_O	$I_O = 200\text{mA}$, $T_J = +25^{\circ}\text{C}$, $V_I = 17.5\text{V to } 30\text{V}$	-	-	100	mV
		$V_I = 20\text{V to } 30\text{V}$	-	-	50	
Load Regulation (Note1)	ΔV_O	$I_O = 5\text{mA to } 0.5\text{A}$, $T_J = +25^{\circ}\text{C}$	-	-	300	mV
		$I_O = 5\text{mA to } 200\text{mA}$, $T_J = +25^{\circ}\text{C}$	-	-	150	
Quiescent Current	I_Q	$T_J = +25^{\circ}\text{C}$	-	4.1	6.0	mA
Quiescent Current Change	ΔI_Q	$I_O = 5\text{mA to } 350\text{mA}$	-	-	0.5	mA
		$I_O = 200\text{mA}$, $V_I = 17.5\text{V to } 30\text{V}$	-	-	0.8	
Output Voltage Drift	$\Delta V/\Delta T$	$I_O = 5\text{mA}$, $T_J = -40 \text{ to } +85^{\circ}\text{C}$	-	-1	-	mV/ $^{\circ}\text{C}$
Output Noise Voltage	V_N	$f = 10\text{Hz to } 100\text{kHz}$	-	100	-	$\mu\text{V}/V_O$
Ripple Rejection	RR	$f = 120\text{Hz}$, $I_O = 300\text{mA}$, $V_I = 18.5\text{V to } 28.5\text{V}$, $T_J = +25^{\circ}\text{C}$	-	70	-	dB
Dropout Voltage	V_D	$T_J = +25^{\circ}\text{C}$, $I_O = 500\text{mA}$	-	2	-	V
Short Circuit Current	ISC	$T_J = +25^{\circ}\text{C}$, $V_I = 35\text{V}$	-	300	-	mA
Peak Current	IPK	$T_J = +25^{\circ}\text{C}$	-	700	-	mA

Note:

1. Load and line regulation are specified at constant junction temperature. Change in V_O due to heating effects must be taken into account separately. Pulse testing with low duty is used.

Electrical Characteristics (LM78M18A) (Continued)

(Refer to the test circuits, $-40 < T_J < +85^{\circ}\text{C}$, $I_O=1\text{A}$, $V_I=26\text{V}$, unless otherwise specified, $C_I=0.33\mu\text{F}$, $C_O=0.1\mu\text{F}$)

Parameter	Symbol	Conditions	Min.	Typ.	Max.	Unit
Output Voltage	V_O	$T_J = +25^{\circ}\text{C}$	17.3	18	18.7	V
		$I_O = 5\text{mA to } 1\text{A}$, $V_I = 20.5\text{V to } 33\text{V}$	17.1	18	18.9	
Line Regulation (Note1)	ΔV_O	$I_O = 200\text{mA}$, $V_I = 21\text{V to } 33\text{V}$	-	-	100	mV
		$T_J = +25^{\circ}\text{C}$, $V_I = 24\text{V to } 33\text{V}$	-	-	50	
Load Regulation (Note1)	ΔV_O	$I_O = 5\text{mA to } 0.5\text{A}$, $T_J = +25^{\circ}\text{C}$	-	-	360	mV
		$I_O = 5\text{mA to } 200\text{mA}$, $T_J = +25^{\circ}\text{C}$	-	-	180	
Quiescent Current	I_Q	$T_J = +25^{\circ}\text{C}$	-	4.2	6.0	mA
Quiescent Current Change	ΔI_Q	$I_O = 5\text{mA to } 350\text{mA}$	-	-	0.5	mA
		$I_O = 200\text{mA}$, $V_I = 21\text{V to } 33\text{V}$	-	-	0.8	
Output Voltage Drift	$\Delta V/\Delta T$	$I_O = 5\text{mA}$, $T_J = -40 \text{ to } 85^{\circ}\text{C}$	-	-1.1	-	mV/ $^{\circ}\text{C}$
Output Noise Voltage	V_N	$f = 10\text{Hz to } 100\text{kHz}$	-	100	-	$\mu\text{V}/V_O$
Ripple Rejection	RR	$f = 120\text{Hz}$, $I_O = 300\text{mA}$, $V_I = 22\text{V to } 32\text{V}$, $T_J = +25^{\circ}\text{C}$	-	70	-	dB
Dropout Voltage	V_D	$T_J = +25^{\circ}\text{C}$, $I_O = 500\text{mA}$	-	2	-	V
Short Circuit Current	ISC	$T_J = +25^{\circ}\text{C}$, $V_I = 35\text{V}$	-	300	-	mA
Peak Current	IPK	$T_J = +25^{\circ}\text{C}$	-	700	-	mA

Note:

1. Load and line regulation are specified at constant junction temperature. Change in V_O due to heating effects must be taken into account separately. Pulse testing with low duty is used.

Electrical Characteristics (LM78M24A) (Continued)

(Refer to the test circuits, $-40 < T_J < +85^{\circ}\text{C}$, $I_O=350\text{mA}$, $V_I=33\text{V}$, unless otherwise specified, $C_I=0.33\mu\text{F}$, $C_O=0.1\mu\text{F}$)

Parameter	Symbol	Conditions	Min.	Typ.	Max.	Unit
Output Voltage	V_O	$T_J = +25^{\circ}\text{C}$	23	24	25	V
		$I_O = 5\text{mA to } 1\text{A}$, $V_I = 27\text{V to } 38\text{V}$	22.8	24	25.2	
Line Regulation (Note1)	ΔV_O	$I_O = 200\text{mA}$, $V_I = 27\text{V to } 38\text{V}$	-	-	100	mV
		$T_J = +25^{\circ}\text{C}$, $V_I = 28\text{V to } 38\text{V}$	-	-	50	
Load Regulation (Note1)	ΔV_O	$I_O = 5\text{mA to } 0.5\text{A}$, $T_J = +25^{\circ}\text{C}$	-	-	480	mV
		$I_O = 5\text{mA to } 200\text{mA}$, $T_J = +25^{\circ}\text{C}$	-	-	240	
Quiescent Current	I_Q	$T_J = +25^{\circ}\text{C}$	-	4.2	6.0	mA
Quiescent Current Change	ΔI_Q	$I_O = 5\text{mA to } 350\text{mA}$	-	-	0.5	mA
		$I_O = 200\text{mA}$, $V_I = 27\text{V to } 38\text{V}$	-	-	0.8	
Output Voltage Drift	$\Delta V/\Delta T$	$I_O = 5\text{mA}$, $T_J = -40 \text{ to } +85^{\circ}\text{C}$	-	-1.2	-	mV/ $^{\circ}\text{C}$
Output Noise Voltage	V_N	$f = 10\text{Hz to } 100\text{kHz}$	-	170	-	$\mu\text{V}/V_O$
Ripple Rejection	RR	$f = 120\text{Hz}$, $I_O = 300\text{mA}$, $V_I = 28\text{V to } 38\text{V}$, $T_J = +25^{\circ}\text{C}$	-	70	-	dB
Dropout Voltage	V_D	$T_J = +25^{\circ}\text{C}$, $I_O = 500\text{mA}$	-	2	-	V
Short Circuit Current	ISC	$T_J = +25^{\circ}\text{C}$, $V_I = 35\text{V}$	-	300	-	mA
Peak Current	IPK	$T_J = +25^{\circ}\text{C}$	-	700	-	mA

Note:

1. Load and line regulation are specified at constant junction temperature. Change in V_O due to heating effects must be taken into account separately. Pulse testing with low duty is used.

Typical Applications

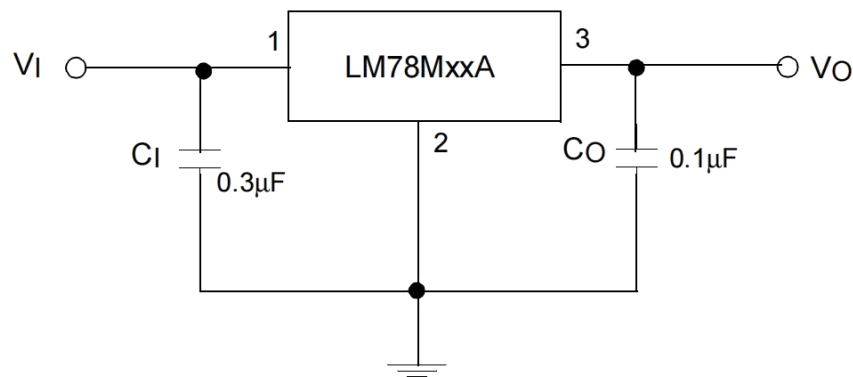


Figure 1. Fixed Output Regulator

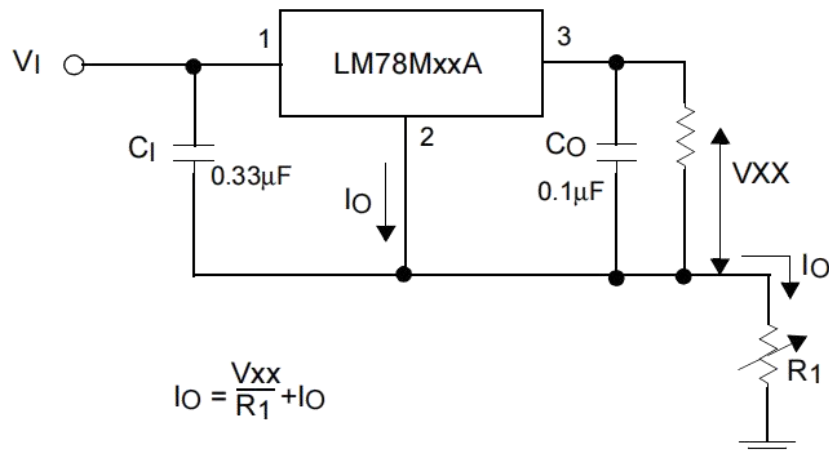


Figure 2. Constant Current Regulator

Notes:

1. To specify an output voltage, substitute voltage value for "XX"
2. Although no output capacitor is needed for stability, it does improve transient response.
3. CI is required if regulator is located an appreciable distance from power Supply filter

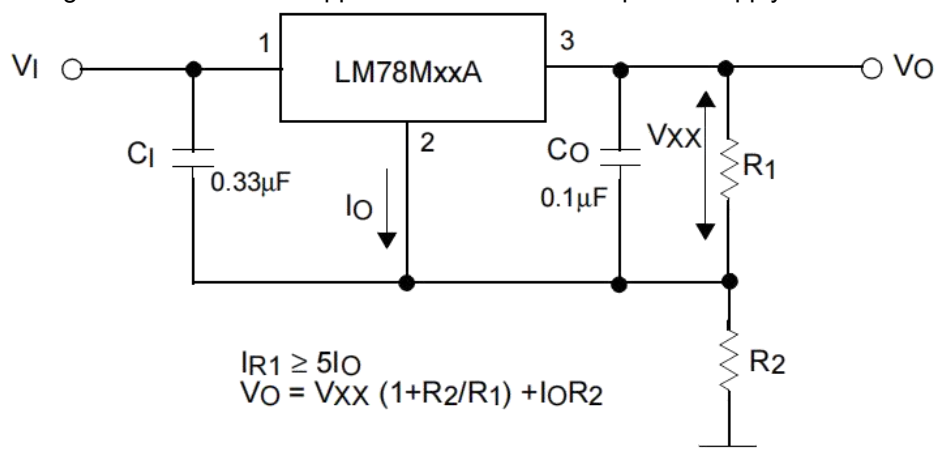
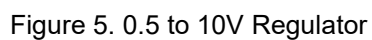
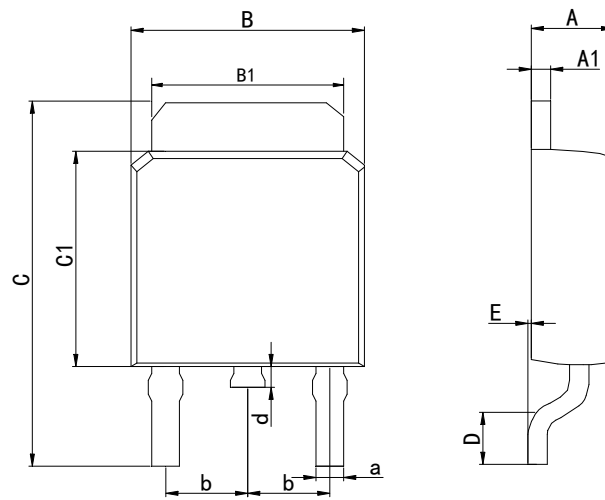


Figure 3. Circuit for Increasing Output Voltage



Physical Dimensions

TO-252-2



Dimensions In Millimeters(TO-252-2)

Symbol:	A	A1	B	B1	C	C1	D	E	a	d	b
Min:	2.10	0.45	6.40	5.10	9.20	5.30	0.90	0	0.50	0.60	2.28
Max:	2.50	0.70	6.80	5.50	10.6	6.30	1.75	0.23	0.80	1.20	BSC

Revision History

DATE	REVISION	PAGE
2018-8-5	New	1-11
2023-9-13	Update encapsulation type、 Add annotation for Maximum Ratings.	1、 2
2024-10-31	Update Lead Temperature	2

IMPORTANT STATEMENT:

Huaguan Semiconductor reserves the right to change its products and services without notice. Before ordering, the customer shall obtain the latest relevant information and verify whether the information is up to date and complete. Huaguan Semiconductor does not assume any responsibility or obligation for the altered documents.

Customers are responsible for complying with safety standards and taking safety measures when using Huaguan Semiconductor products for system design and machine manufacturing. You will bear all the following responsibilities: Select the appropriate Huaguan Semiconductor products for your application; Design, validate and test your application; Ensure that your application meets the appropriate standards and any other safety, security or other requirements. To avoid the occurrence of potential risks that may lead to personal injury or property loss.

Huaguan Semiconductor products have not been approved for applications in life support, military, aerospace and other fields, and Huaguan Semiconductor will not bear the consequences caused by the application of products in these fields. All problems, responsibilities and losses arising from the user's use beyond the applicable area of the product shall be borne by the user and have nothing to do with Huaguan Semiconductor, and the user shall not claim any compensation liability against Huaguan Semiconductor by the terms of this Agreement.

The technical and reliability data (including data sheets), design resources (including reference designs), application or other design suggestions, network tools, safety information and other resources provided for the performance of semiconductor products produced by Huaguan Semiconductor are not guaranteed to be free from defects and no warranty, express or implied, is made. The use of testing and other quality control technologies is limited to the quality assurance scope of Huaguan Semiconductor. Not all parameters of each device need to be tested.

The documentation of Huaguan Semiconductor authorizes you to use these resources only for developing the application of the product described in this document. You have no right to use any other Huaguan Semiconductor intellectual property rights or any third party intellectual property rights. It is strictly forbidden to make other copies or displays of these resources. You should fully compensate Huaguan Semiconductor and its agents for any claims, damages, costs, losses and debts caused by the use of these resources. Huaguan Semiconductor accepts no liability for any loss or damage caused by infringement.