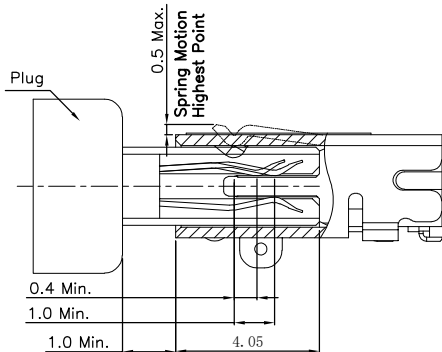
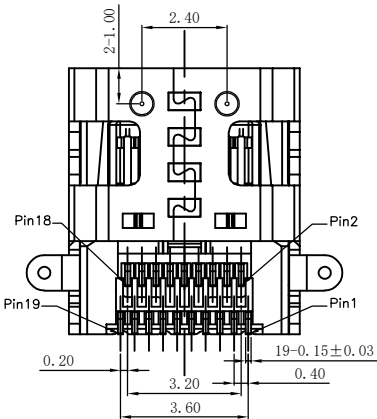
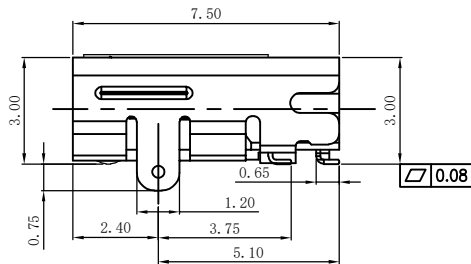
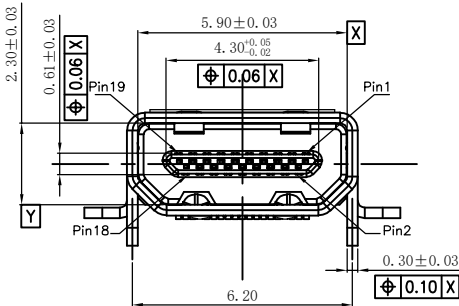
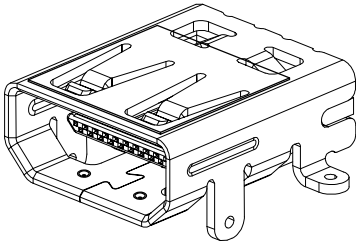
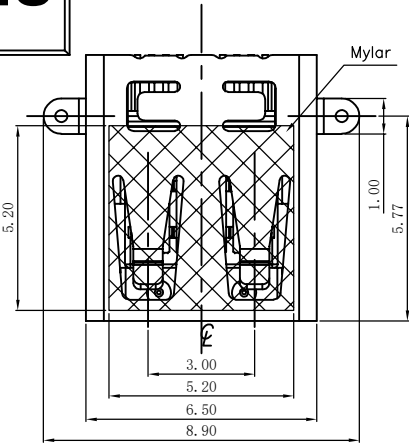


RoHS

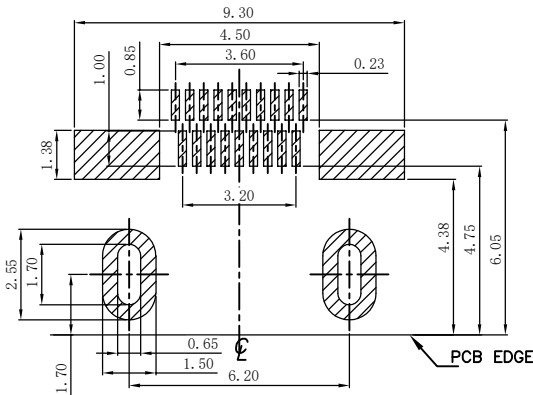


Receptacle and Plug Mated Condition

REV.	DESCRIPTION.	ECN NO.	DWG.	CKD.	APPD.	DATE.
A	NEW		Jack	JACK	L.Z.R	2024-05-25

Notes:

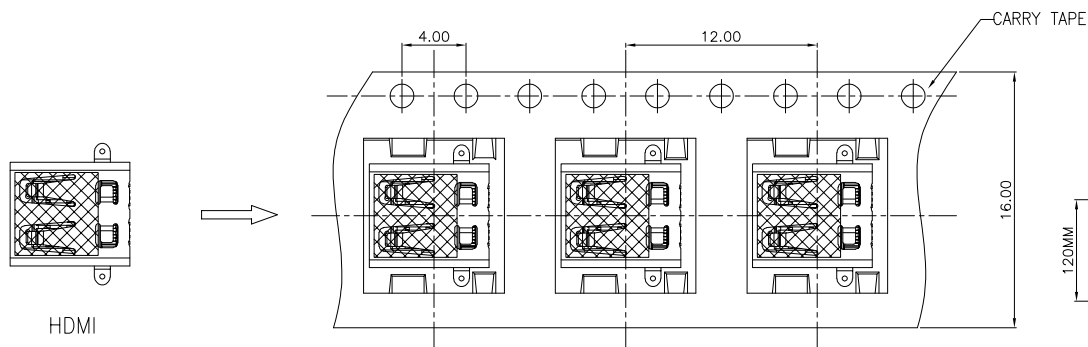
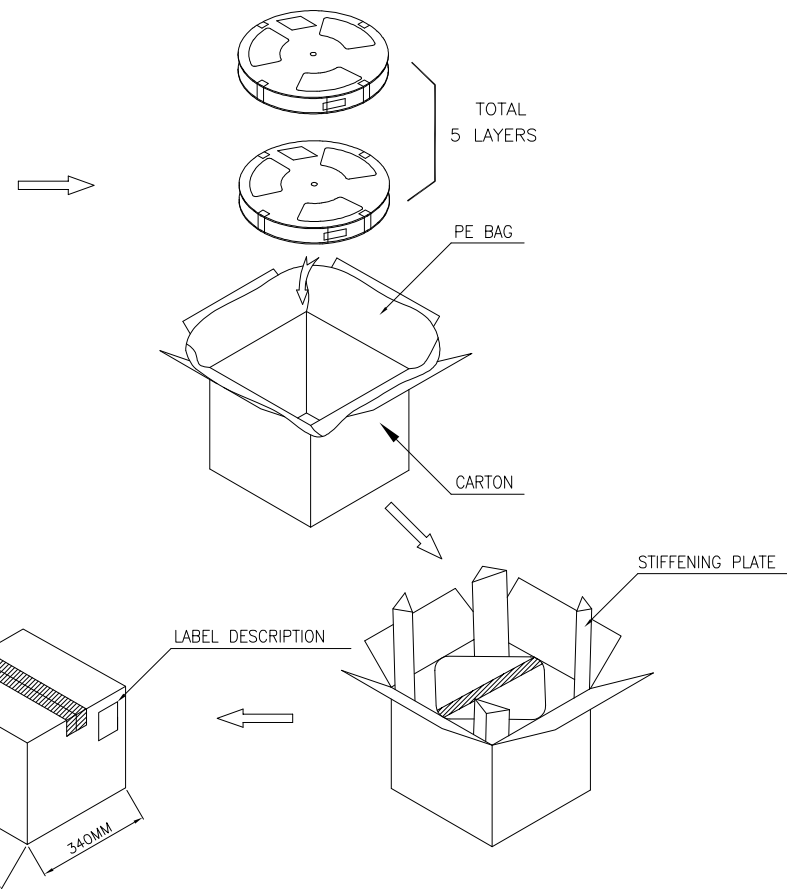
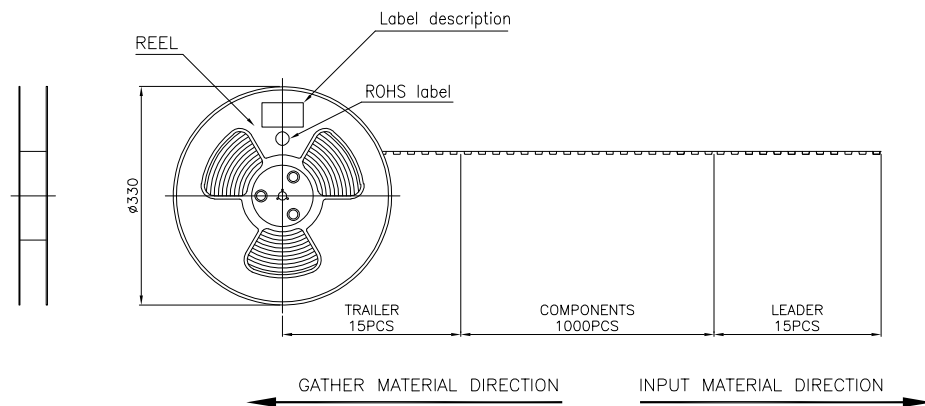
- Materials
  - Housing: LCP+30% G/F, Black, UL94 V-0;
  - Contact: C7025-H;
  - Shell: C5191-H;
- Ratings
  - Current Rating: 0.3A ;
  - Operating Temperature: -40°C ~ 85°C;
- Electrical Requirement:
  - LLCR: Excluding Conductor Resistance 10mΩ Max.(Target design value), Contact: 30mΩ Max. changed (Final), Shell: 50mΩ Max. Changed (Final);
  - Dielectric Withstanding Voltage: 150V AC (RMS) for 1 minute (Mated), 250V AC (RMS) for 1 minute (Unmated);
  - Insulation Resistance: 10MΩ Min. @ 150V DC (Mated), 100MΩ Min. @ 500V DC (Unmated);
- Mechanical Performance:
  - Insertion force: 44.1N (4.5Kg) Max.;
  - Withdrawal force: 4.9~25N (0.5~2.5Kg);
  - Durability life: 5,000 Cycles;
- IR Reflow: the peak temperature on board shall be maintained for 10 seconds at 260±5°c.
- How to order:



RECOMMENDED PCB LAYOUT(TOP VIEW)  
(TOLERANCE: ±0.05mm)

PIN	Signal Assignment
1	Hot Plug Detect
2	Utility
3	TMDS Data2+
4	TMDS Data2 Shield
5	TMDS Data2-
6	TMDS Data1+
7	TMDS Data1 Shield
8	TMDS Data1-
9	TMDS Data0+
10	TMDS Data0 Shield
11	TMDS Data0-
12	TMDS Clock+
13	TMDS Clock Shield
14	TMDS Clock-
15	CEC
16	DDC/CEC Ground
17	SCL
18	SDA
19	+5V Power

TOLERANCES UNLESS OTHERWISE SPECIFIED					
UNIT	(MM)	ORIGINAL DATA			
X.	±0.55	2024-05-25			
X.X	±0.35	TITLE			
X.XX	±0.25	HDMI Type D 19Pin,板上型CH=1.55,双排 SMT,外壳前插后贴(GD0001-2.1)			
X.XXX	±0.15	DWG.			
ANGEL	±2°	Jack			
3RD.ANGLE'S		CKD.		PART NO.	
		JACK		HDMI-GD0001-2.1	
		APPD.		SCALE	
		L.Z.R		1:1	
				SIZE	
				A4	
				SHEET	
				1/2	
				REV.	
				A	



Notes:

1. The start and end of each reel, based on the actual quantity, reserved 15pcs space;
2. Peel off force of top tape: 10g~130g, peel deg.:165°~175°;  
peel speed: 250~300mm/min;
3. Carton size: 340\*340\*120mm.
4. QTY: 1000pcs/reel, 5reel/carton, total 5000pcs/carton;

REV.	DESCRIPTION.	ECN NO.	DWG.	CKD.	APPD.	DATE.
A	NEW		Jack	JACK	L.Z.R	2024-05-25

TOLERANCES UNLESS OTHERWISE SPECIFIED		<b>深圳市辉焕科技有限公司</b>			
UNIT (MM)					
X.	±0.55	ORIGINAL DATA 2022-05-25		TITLE HDMI Type D 19Pin,板上型CH=1.55,双排SMT,外壳前插后贴(GD0001-2.1)	
X.X	±0.35				
X.XX	±0.25	DWG. Jack			
X.XXX	±0.15				
ANGEL	±2°	CKD. JACK		PART NO. HDMI-GD0001-2.1	
3RD. ANGLE'S		APPD. L.Z.R		DWG NO. HDMI-GD0001-2.1	
					
				SCALE 1:1	SIZE A4
				SHEET 2/2	REV. A