

NOTES:  
MATERIAL:  
1.HOUSING:LCP UL94V-0 BLACK  
2.CONTACT:PHOSPHOR BRONZE  
PLATING: GOLD ON THE CONTACT AREA  
UNDERPLATING:50~120U" NICKEL OVERALL  
ELECTRICAL:  
1.CURRENT RATING:0.5A  
2.VOLTAGE RATING:50V  
3.WITHSTANDING VOLTAGE:250V  
4.CONTACT RESISTANCE:100MΩ MAX  
5.INSULATION RESISTANCE:500MΩ MIN  
6.FLOATING RANGE ±0.5MM IN X, Y, Z DIRECTIONS  
ENVIRONMENTAL:  
1. OPERATING TEMPERATURE:-40°C TO +125°C.

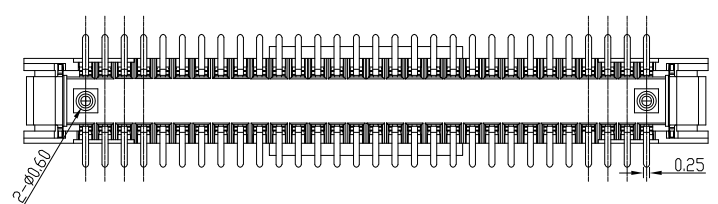
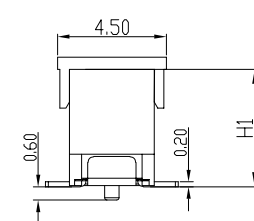
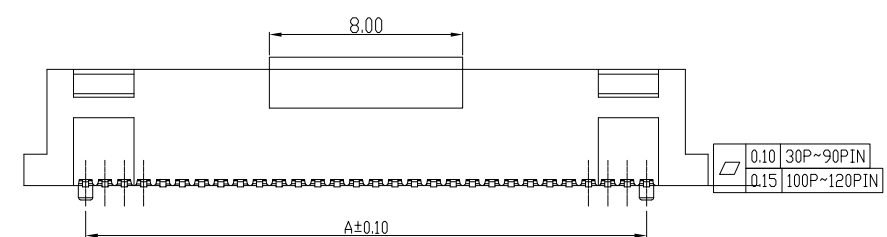
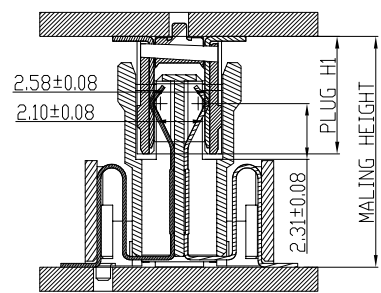
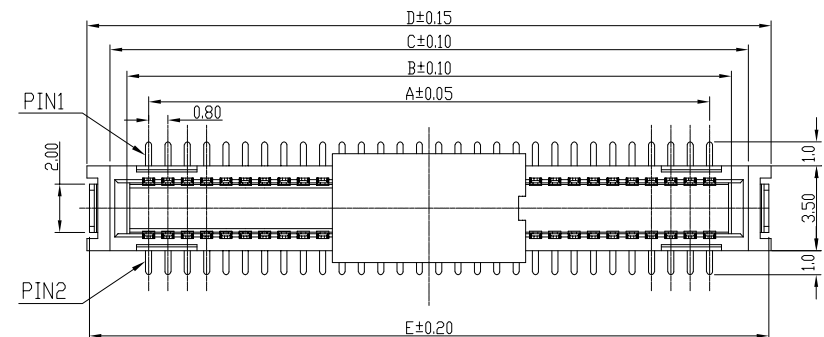
PLUG H1	4.80	6.80	7.80	9.05
SOCKET				
8.45	9.75 9.25~10.25	11.75 11.25~12.25	12.75 12.25~13.25	14.00 13.50~14.50

PLUG H2	10.95	13.05		
SOCKET				
8.45	15.90 15.50~16.50	18.00 17.50~18.50		

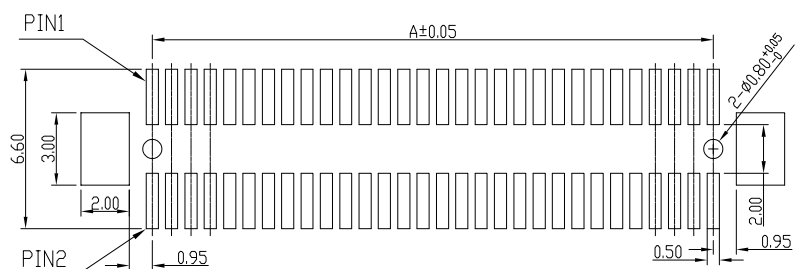
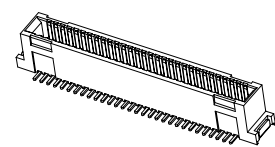
CKT	A	B	C	D	E
30	11.2	13.0	14.4	16.3	16.1
40	15.2	17.0	18.4	20.3	20.1
50	19.2	21.0	22.4	24.3	24.1
60	23.2	25.0	26.4	28.3	28.1
70	27.2	29.0	30.4	32.3	32.1
80	31.2	33.0	34.4	36.3	36.1
90	35.2	37.0	38.4	40.3	40.1
100	39.2	41.0	42.4	44.3	44.1
110	43.2	45.0	46.4	48.3	48.1
120	47.2	49.0	50.4	52.3	52.1

**LXW** 连兴旺电子(深圳)有限公司  
connectivity LXWCONN ELECTRONICS (SHENZHEN) CO., LTD

制图 (DR): EAST\_ZHOU 2025.02.28 品名 (TITLE): IMSA 0.80 BTB PLUG 1  
审核 (CHKD): 料号 (PART NO): LB48xx-xxxP-BxR  
核准 (APPD): TONG 2025.02.28 比例 (SCALE): 1:1 单位 (UNITS): mm 张数 (SHEET): 1 OF 1 图幅 (SIZE): A4



LB48XX-X XX P-WXR  
PACKING: R: CARRIER REEL  
0: WITH POSITIONING POSTS  
1: WITHOUT POSITIONING POSTS  
COLOR: BLACK/WHITE  
PIN  
PLATING TYPE G: 1u" Au Min (GOLD FLASH)  
2: 2u" Au Min  
3: 3u" Au Min F: 10u" Au Min  
E: 30u" Au Min  
HEIGHT: 48=4.8H, 68=6.8H, 78=7.8H, 91=9.05H  
8: 0.8 PITCH  
LXWCONN BTB CONNECTOR SERIES

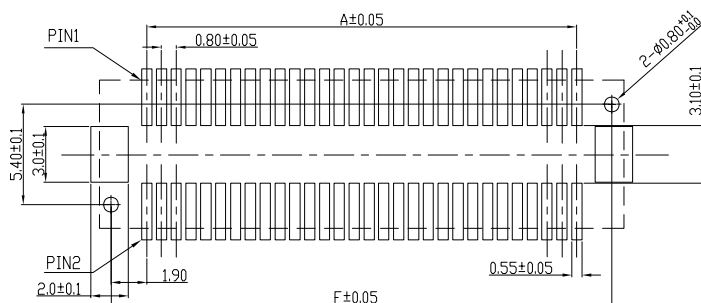
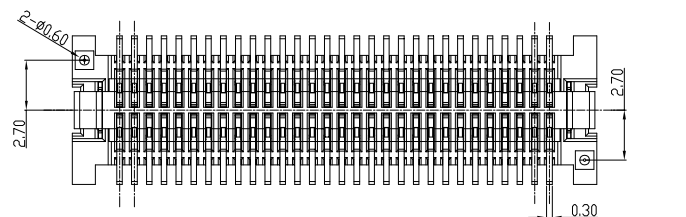
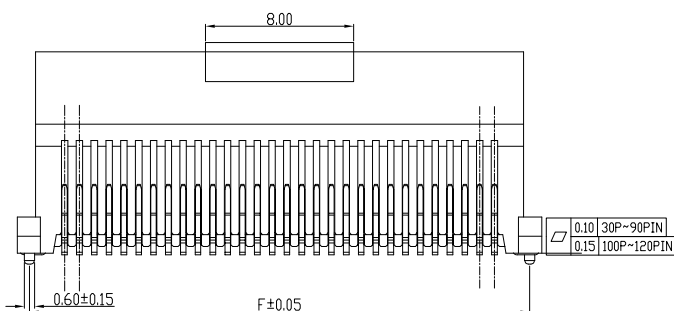
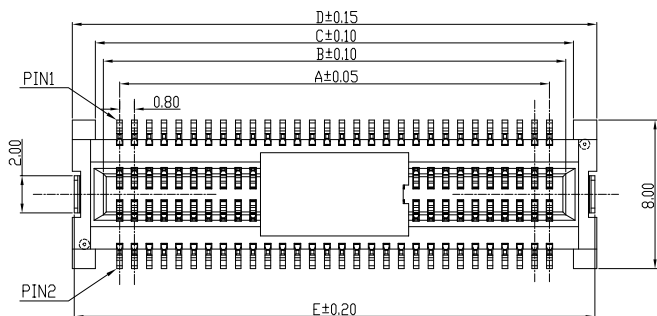


Recommended PC board pattern  
(TOP VIEW)

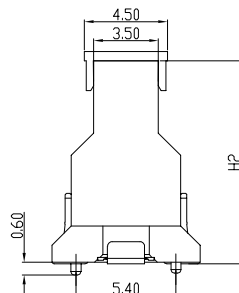
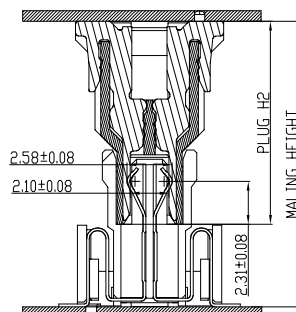
修订 SER	修改摘要 REVISION DESCRIPTION	签名 SIGNATURE	日期 DATE

一般公差  
GENERAL TOLERANCE  
X ±0.30  
XX ±0.20  
XXX ±0.10  
ANGLES ±2°  
版本 A (REV)





Recommended PC board pattern  
(TOP VIEW)



LB48XX-X XX P-BXR

PACKING: R: CARRIER REEL

0:WITH POSITIONING POSTS

1:WITHOUT POSITIONING POSTS

COLOR:BLACK

P-PLUG

PIN

PLATING TYPE G:1u" Au Min(GOLD FLASH)

2:2u" Au Min

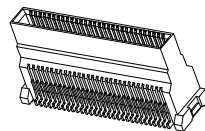
3:3u" Au Min F:10u" Au Min

E:30u" Au Min

HEIGHT: A1:10.95 A3:13.05

8:0.8 PITCH

LXWCONN BTB CONNECTOR SERIES



#### NOTES:

##### MATERIAL:

1.HOUSING:LCP UL94V-0 BLACK

2.CONTACT:PHOSPHOR BRONZE

PLATING: GOLD ON THE CONTACT AREA

UNDERPLATING:50~120U" NICKEL OVERALL

##### ELECTRICAL:

1.CURRENT RATING:0.5A

2.VOLTAGE RATING:50V

3.WITHSTANDING VOLTAGE:250V

4.CONTACT RESISTANCE:100MΩ MAX

5.INSULATION RESISTANCE:500MΩ MIN

6.FLOATING RANGE ±0.5MM IN X, Y, Z DIRECTIONS

##### ENVIRONMENTAL:

1. OPERATING TEMPERATURE:-40°C TO +125°C.

PLUG H1 SOCKET	4.80	6.80	7.80	9.05
8.45	9.75	11.75	12.75	14.00
	9.25~10.25	11.25~12.25	12.25~13.25	13.50~14.50

PLUG H2 SOCKET	10.95	13.05		
8.45	15.90	18.00		
	15.50~16.50	17.50~18.50		

CKT	A	B	C	D	E	F
30	11.2	12.95	13.8	16.3	16.1	15.0
40	15.2	16.95	17.8	20.3	20.1	19.0
50	19.2	20.95	21.8	24.3	24.1	23.0
60	23.2	24.95	25.8	28.3	28.1	27.0
70	27.2	28.95	29.8	32.3	32.1	31.0
80	31.2	32.95	33.8	36.3	36.1	35.0
90	35.2	36.95	37.8	40.3	40.1	39.0
100	39.2	40.95	41.8	44.3	44.1	43.0
110	43.2	44.95	45.8	48.3	48.1	47.0
120	47.2	48.95	49.8	52.3	52.1	51.0

**LXW** 连兴旺电子(深圳)有限公司  
connectivity LXWCONN ELECTRONICS(SHENZHEN)CO.,LTD

制图 (DR):	EAST_ZHOU 2025.02.28	品名(TITLE):	IMSA 0.80 BTB PLUG 2
审核 (CHKD):		料号(PART NO):	LB48xx-xxxP-BxR
核准 (APPD):	TONG 2025.02.28	比例(SCALE):	1:1
		单位(UNITS):	mm
		张数(SHEET):	1 OF 1
		图幅(SIZE):	A4

RoHS  
Compliant  
2013/55/EC



修订 SER	修改摘要 REVISION DESCRIPTION	签名 SIGNATURE	日期 DATE

一般公差 GENERAL TOLERANCE
X ±0.30
.XX ±0.20
.XXX ±0.10
ANGLES ±2°
版本 A (REV)



