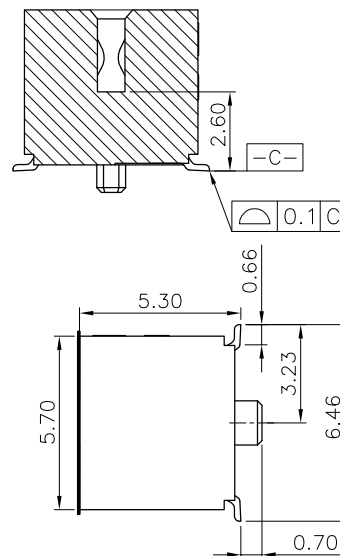
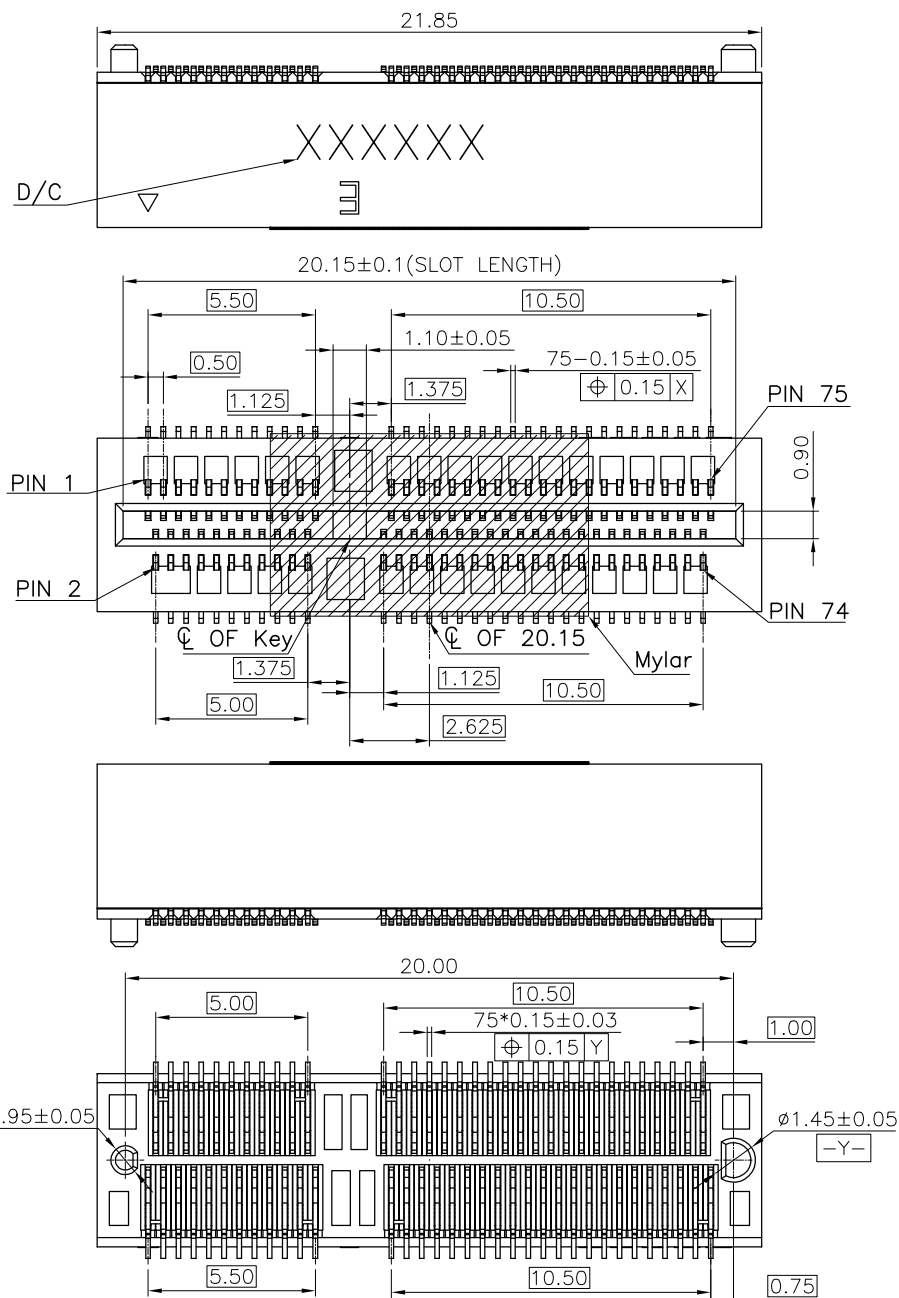


RoHS Compliant

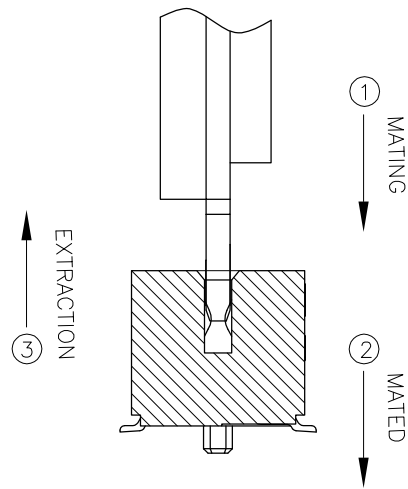


NOTES:

1. MATERIAL SPECIFICATION:
1-1. HOUSING: LCP+40%GF, UL94V-0, PANTONE BLACK.
1-2. CONTACT: C1065-SPING.
2. PLATING SPECIFICATION:
2-1. CONTACT:
50u" MIN.NICKEL UNDER PLATING OVER ALL.
Au 1u"Min PLATING ON CONTACT AREA
Sn 80u"Min PLATING ON SOLDER AREA.
3. HF COMPLIANT, ROHS COMPLIANT.
4. DATE CODE: XXXXXX
- DAY
WEEK
YEAR
5. MECHANICAL PERFORMANCE:
5-1. DURABILITY: 25 CYCLES.
6. ELECTRICAL PERFORMANCE:
6-1. CURRENT: 0.5A PER PIN.
6-2. LLCR: INITIAL 55mΩ MAX. ; FINAL Δ LLCR=20mΩ MAX..
7. IR REFLOW:
THE TEMPERATURE SHALL BE 260+5/-0°C MAINTAINING 10+1/-0 SECONDS.

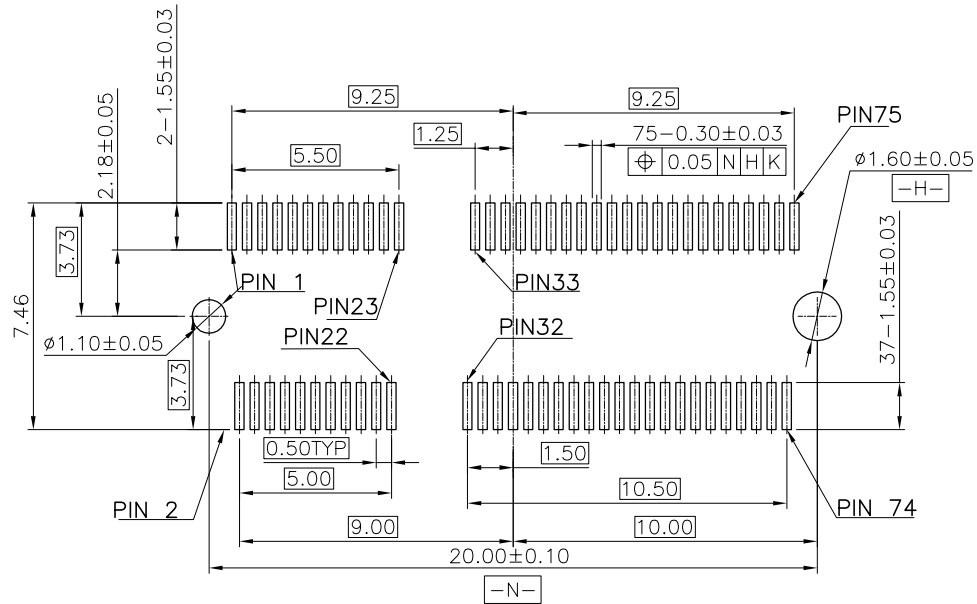
深圳市敏连达科技有限公司 Shenzhen Minlianda Technology Co.,Ltd.			品名(ITEM NO)	直立式NGFF E KEY	
			料号(PART NO)	MLD-NGFF-E-5.3H	
单位(UNIT): MM	未注公差 TOLERANCE UNspecified	版次(REV): A/0	页次(PAGE):1/1	设计 (DESIGN)	柯南
比例(SCALE) 1:1	X.X ± 0.38 X.XX ± 0.20 X.XXX ± 0.10 X" ± 5" X.X" ± 2"	模号 (MODEL NO)		审核 (CHECKED)	邱敏
		图号 (DWG NO)		MLD-2509031032	核准(APPROVED)

RoHS Compliant



HOW TO MATE AND EXTRACT

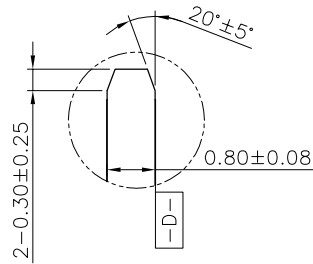
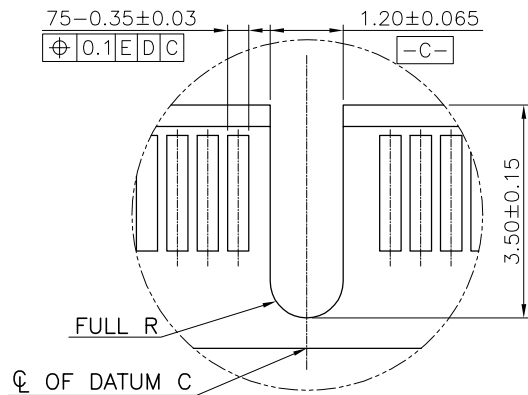
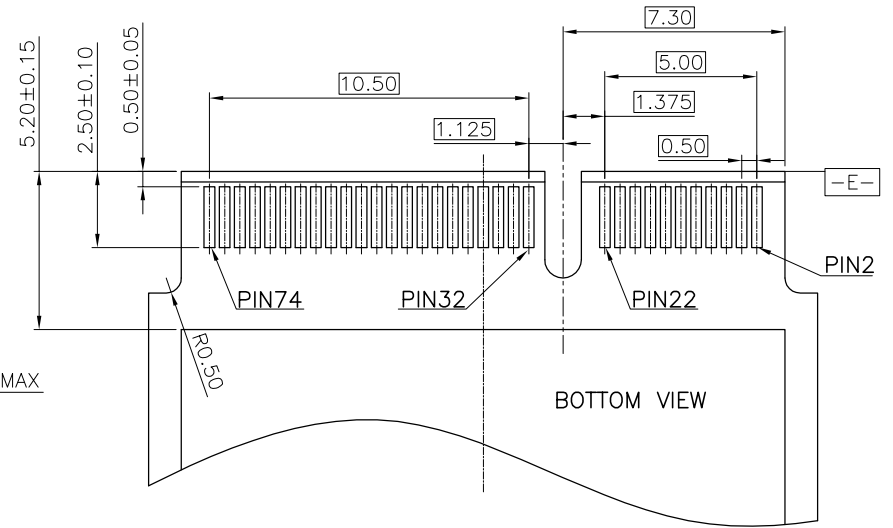
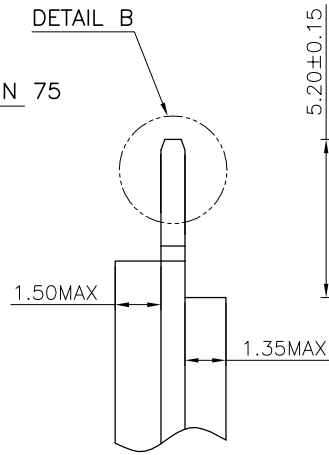
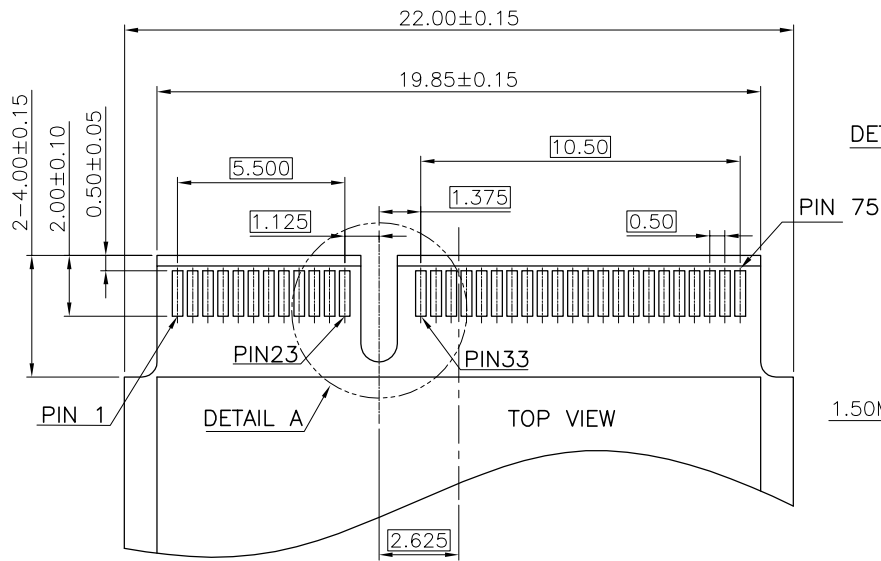
MATE: ① → ②
EXTRACT: ③



RECOMMENDED PCB LAYOUT(TOP VIEW)
DEFAULT TOLERANCE $\pm 0.05\text{MM}$

深圳市敏连达科技有限公司 Shenzhen Minlianda Technology Co.,Ltd.			品名(ITEM NO)	直立式NGFF E KEY	
			料号(PART NO)	MLD-NGFF-E-5.3H	
单位(UNIT): MM	未 注 公 差 TOLERANCE UNSPECIFIED X.X ± 0.38 X.XX ± 0.20 X.XXX ± 0.10 X" ± 5" X.X" ± 2"	版次(REV): A/0	页次(PAGE):1/1	设计 (DESIGN)	柯南
比例(SCALE) 1:1		模号 (MODEL NO)		审核 (CHECKED)	邱敏
 		图号 (DWG NO)		MLD-2509031032	核准(APPROVED)

RoHS Compliant



DETAIL B
SCALE 2:1

DETAIL A
SCALE 2:1

深圳市敏连达科技有限公司 Shenzhen Minlianda Technology Co.,Ltd.			品名(ITEM NO)	直立式NGFF E KEY	
			料号(PART NO)	MLD-NGFF-E-5.3H	
单位(UNIT): MM	未 注 公 差 TOLERANCE UNSPECIFIED X.X ± 0.38 X.XX ± 0.20 X.XXX ± 0.10 X" ± 5" X.X" ± 2"	版次(REV): A/0	页次(PAGE):1/1	设计 (DESIGN)	柯南
比例(SCALE) 1:1		模号 (MODEL NO)		审核 (CHECKED)	邱敏
		图号 (DWG NO)		MLD-2509031032	核准(APPROVED)