



Color: ■ gray

Electrical data

Ratings per IEC/EN	
Rated current	24 A

Physical data

Width	50 mm / 1.969 inches
Height	4 mm / 0.157 inches
Depth	19.2 mm / 0.756 inches
Jumper assignment	1-2-3-4-5-6-7-8-9-10

Material data

Note (material data)	<a href="#">Information on material specifications can be found here</a>
Color	gray
Insulation material (main housing)	Polyamide (PA66)
Fire load	0.032 MJ
Weight	5 g

Commercial data

PU (SPU)	50 (25) pcs
Packaging type	Box
Country of origin	DE
GTIN	4044918846097
Customs tariff number	85366990990



Product classification		
UNSPSC		39121421

Environmental Product Compliance	
RoHS Compliance Status	Compliant,No Exemption

Downloads	
Environmental Product Compliance	
Compliance Search	
Environmental Product Compliance 280-490	<a href="#">↓</a>

Documentation				
Bid Text				
280-490	27.04.2017	doc	24.00 KB	<a href="#">↓</a>
280-490	19.02.2019	xml	2.54 KB	<a href="#">↓</a>

CAD/CAE-Data	
CAD data	CAE data
2D/3D Models 280-490	EPLAN Data Portal 280-490
	WSCAD Universe 280-490
	ZUKEN Portal 280-490

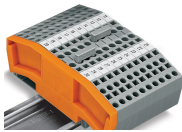
1 Compatible Products
1.1 Optional Accessories
1.1.1 Tool
1.1.1.1 Operating tool



[Item No.: 280-440](#)  
Operating tool; made of insulating material; 10-way; white

Installation Notes

Commoning



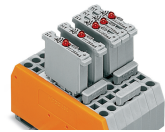
Commoning using comb-style jumper bars.  
Push comb-style jumper bars down until fully inserted.

Commoning



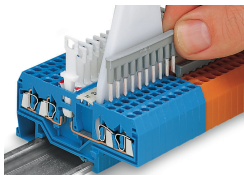
4-conductor through terminal blocks, angled type, formation of groups with 3-way, comb-style jumper bars

Commoning



Carrier terminal blocks with component plugs, alternate comb-style jumper bars, 3-way comb-style jumper bar

Commoning



Commoning front-entry disconnect terminal blocks via comb-style jumper bar using a 10-pole operating tool