



Color: ■ light gray

Electrical data

Ratings per IEC/EN	
Nominal voltage (III/3)	800 V
Rated current	32 A

Physical data

Width	11.3 mm / 0.443 inches
Height	3.9 mm / 0.154 inches
Depth	20.2 mm / 0.795 inches

Material data

Note (material data)		Information on material specifications can be found here
Color	light gray	
Material group	I	
Insulation material (main housing)	Polyamide (PA66)	
Flammability class per UL94	V0	
Fire load	0.008 MJ	
Weight	1.6 g	

Environmental requirements

Environmental Testing (Environmental Conditions)		Environmental Testing (Environmental Conditions)	
Test specification	DIN EN 50155 (VDE 0115-200):2022-06	Frequency	f ₁ = 5 Hz to f ₂ = 150 Hz f ₁ = 5 Hz to f ₂ = 150 Hz
Railway applications – Rolling stock – Electronic equipment		Acceleration	0.101g (highest test level used for all axes) 0.572g (highest test level used for all axes) 5g (highest test level used for all axes)
Test procedure	DIN EN 61373 (VDE 0115-0106):2011-04	Test duration per axis	10 min. 5 h
Railway applications – Rolling stock equipment – Shock and vibration tests		Test directions	X, Y and Z axes X, Y and Z axes X, Y and Z axes
Spectrum/Installation location	Service life test, Category 1, Class A/B		
Function test with noise-like vibration	Test passed according to Section 8 of the standard		



Environmental Testing (Environmental Conditions)	
Monitoring for contact faults/interruptions	Passed
Voltage drop measurement before and after each axis	Passed
Simulated service life test through increased levels of noise-like vibration	Test passed according to Section 9 of the standard
Extended test scope: Monitoring for contact faults/interruptions	Passed Passed
Extended test scope: Voltage drop measurement before and after each axis	Passed Passed
Shock test	Test passed according to Section 10 of the standard
Shock form	Half sine
Shock duration	30 ms
Number of shocks per axis	3 pos. und 3 neg.
Vibration and shock stress for rolling stock equipment	Passed

Commercial data		
Product Group		22 (TOPJOB S)
PU (SPU)		25 pcs
Packaging type		Bag
Country of origin		DE
GTIN		4055143701808
Customs tariff number		85366990990

Product classification	
UNSPSC	39121421

Environmental Product Compliance	
RoHS Compliance Status	Compliant,No Exemption

Approvals / Certificates	
Declarations of conformity and manufacturer's declarations	



Approval	Standard	Certificate Name
Railway WAGO GmbH & Co. KG	-	Railway Ready



Downloads

Environmental Product Compliance

Compliance Search			
Environmental Product Compliance 2006-499			↓

Documentation

Bid Text			
2006-499	19.02.2019	xml 2.55 KB	↓
2006-499	28.04.2017	doc 23.50 KB	↓

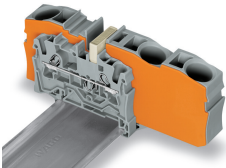
CAD/CAE-Data

CAD data			
2D/3D Models 2006-499			↓

CAE data	
EPLAN Data Portal 2006-499	↓
WSCAD Universe 2006-499	↓
ZUKEN Portal 2006-499	↓

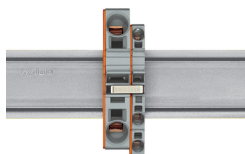
Installation Notes

Commoning



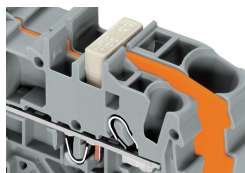
Step-down jumpers common terminal blocks of different sizes, without losing a conductor clamping point. This can be beneficial on long conductor runs where voltage drop can be a problem. A large conductor can be easily connected to smaller conductors at the distribution point. Commoning may be made in either direction using the special thin end plate to cover the open side. Additional through terminal blocks having a smaller cross-section may be commoned using push-in type jumper bars.

Commoning



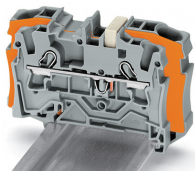
Using **step-down jumpers**, an end plate must be inserted between the terminal blocks to be commoned.

Commoning



Commoning with step-down jumpers.

Commoning



Step-down jumper (2006-499) commons 6/4 mm² (10/12 AWG) terminal blocks (2006/2004 Series) with 4/2.5/1.5 mm² (AWG 12/14/16) terminal blocks (2004/2002/2001 Series).

Commoning



Step-down jumper (2006-499) commons 6/4 mm² (10/12 AWG) terminal blocks (2206/2204 Series) with 4/2.5/1.5 mm² (AWG 12/14/16) terminal blocks (2204/2202/2201 Series).