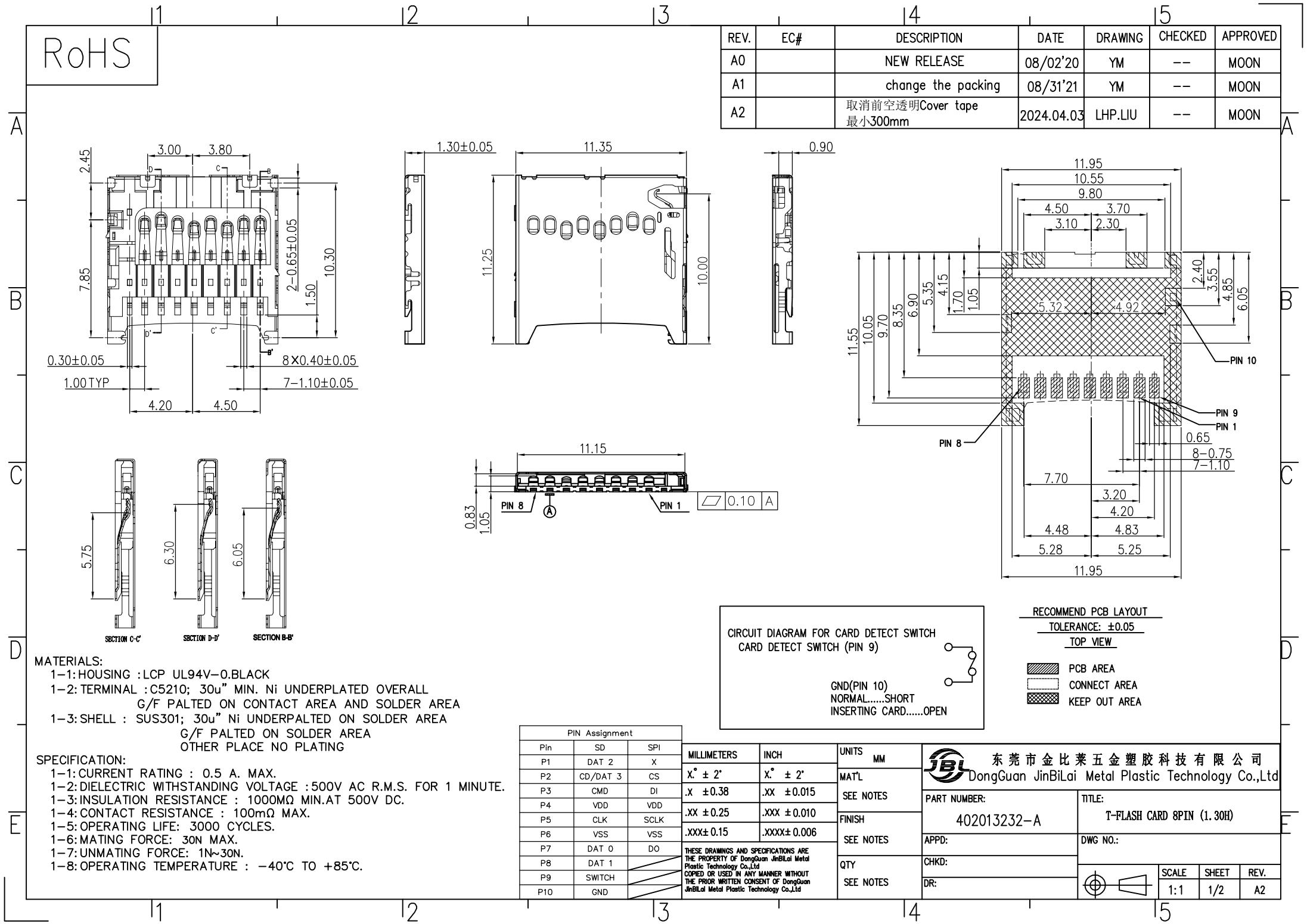
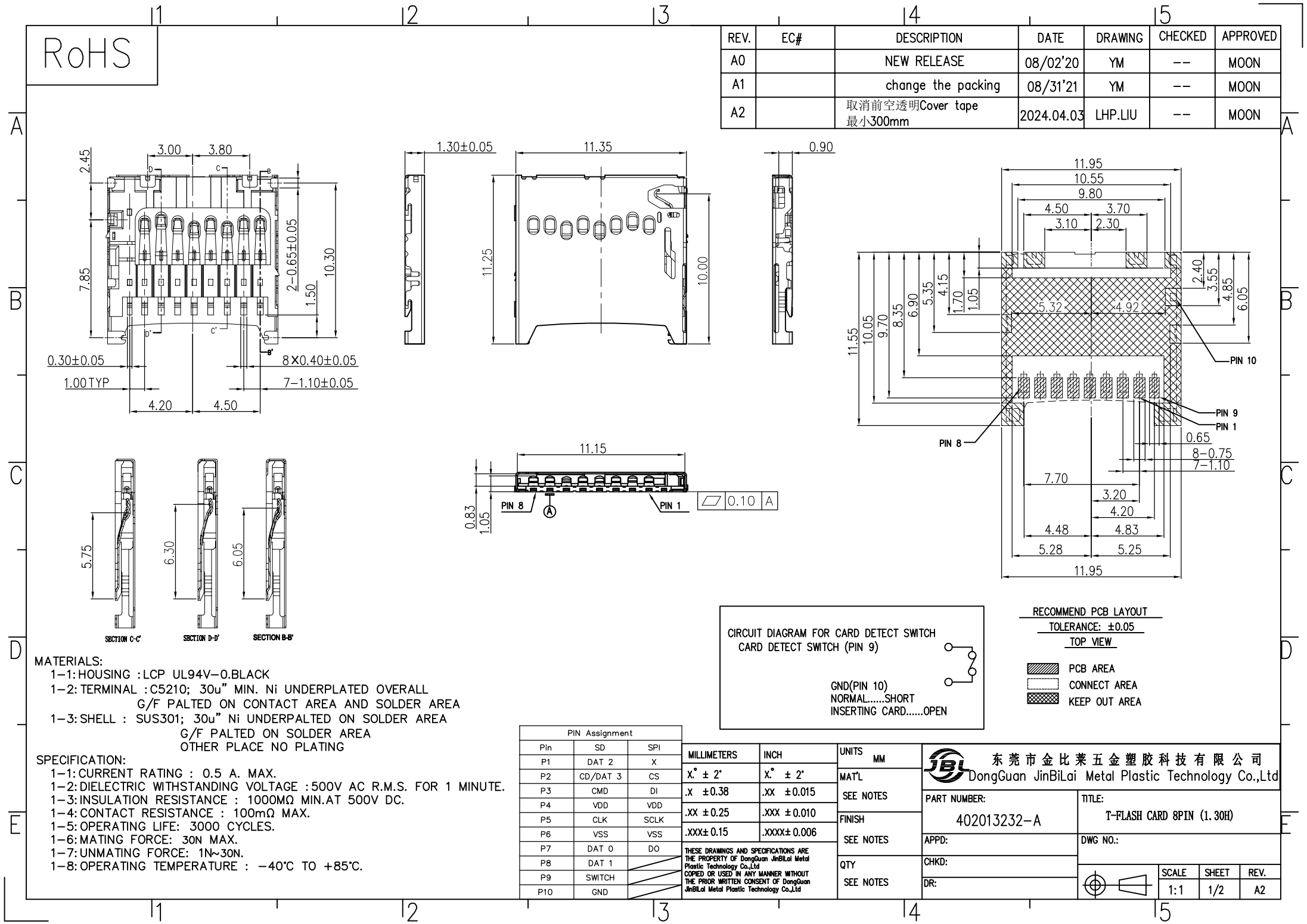
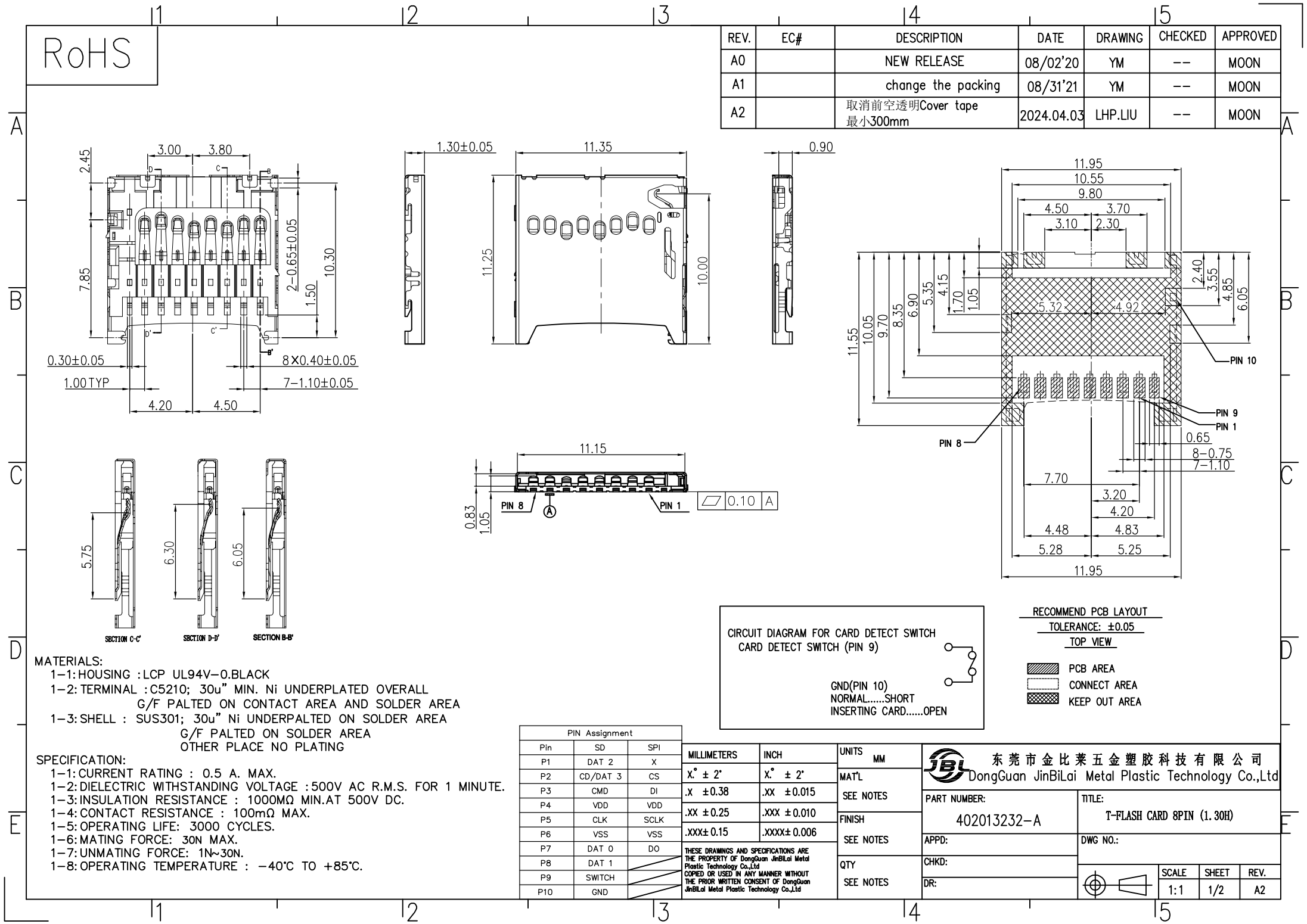
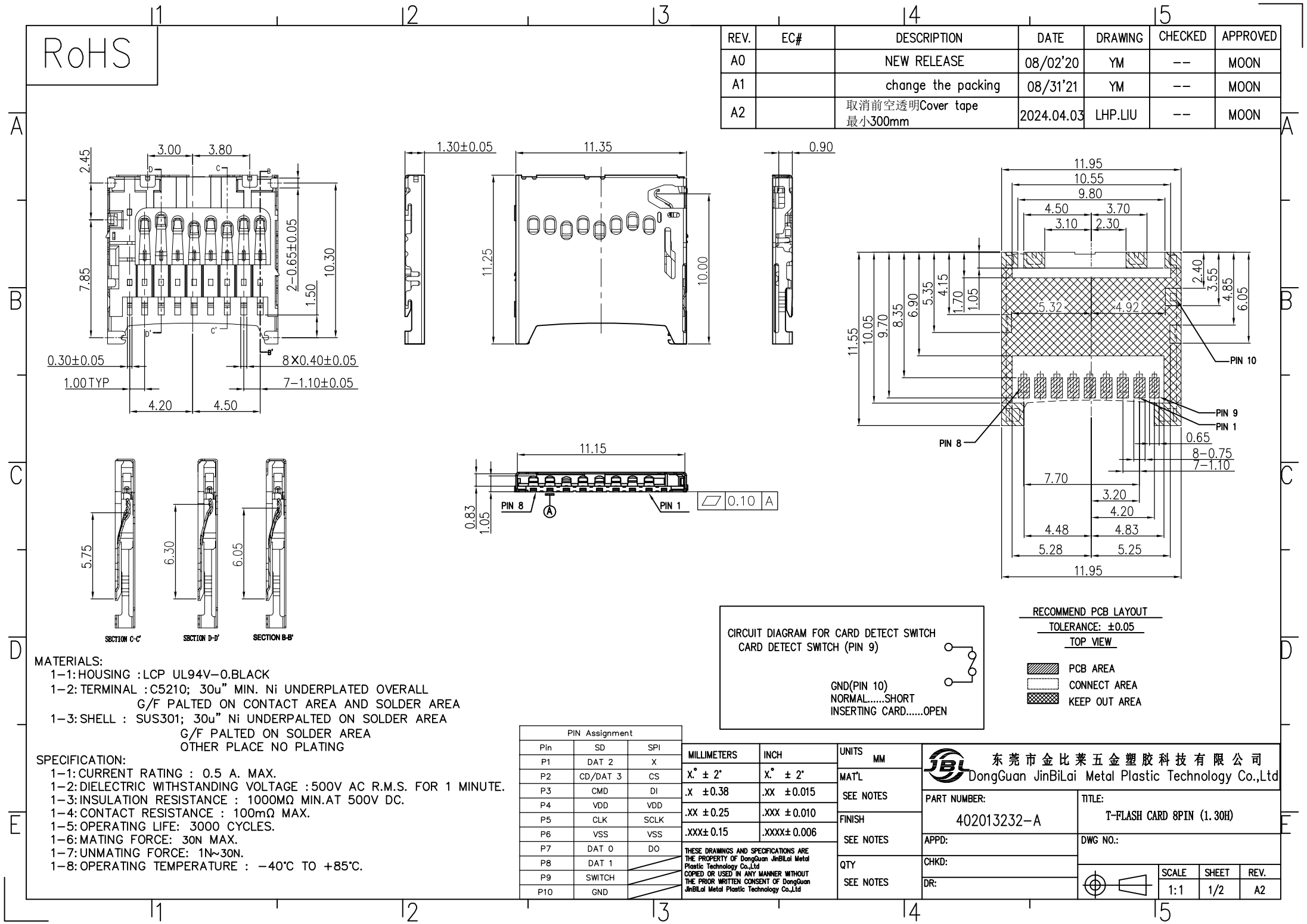
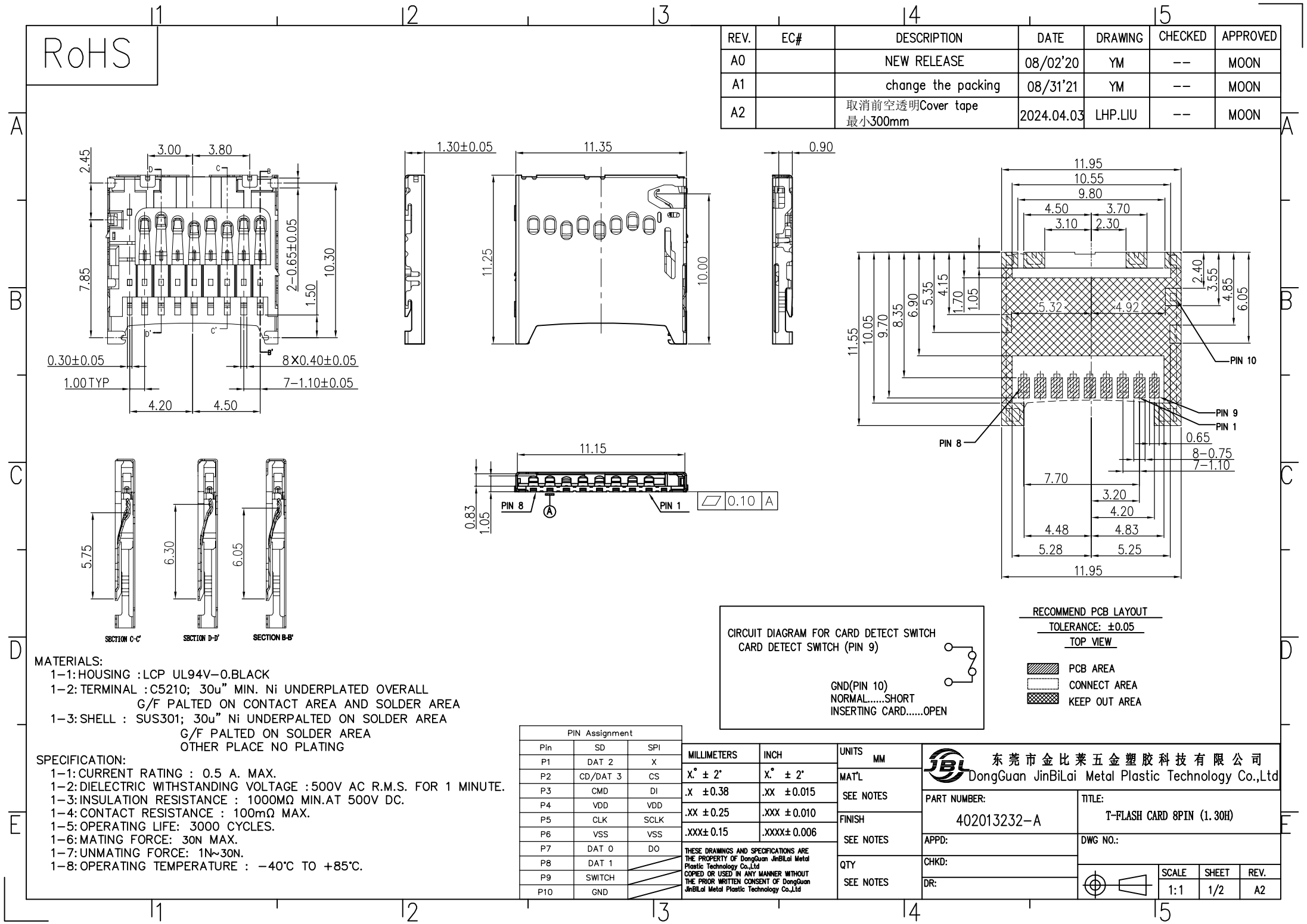
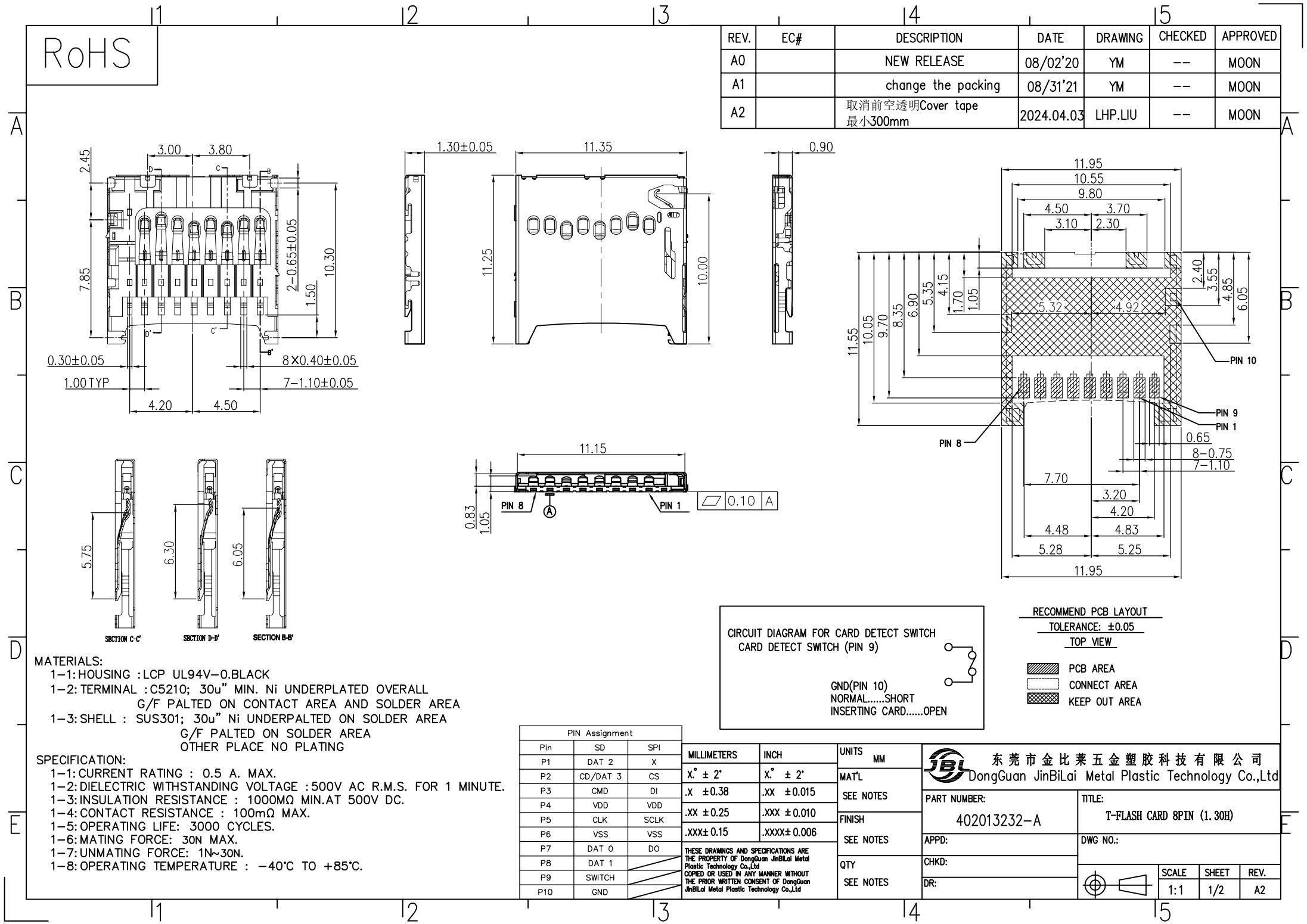


[illegible][illegible][illegible][illegible][illegible][illegible][illegible][illegible][illegible]

RoHS

REV.	EC#	DESCRIPTION	DATE	DRAWING	CHECKED	APPROVED
A0		NEW RELEASE	08/02'20	YM	--	MOON
A1		change the packing	08/31'21	YM	--	MOON
A2		取消前空透明Cover tape 最小300mm	2024.04.03	LHP.LIU	--	MOON

MATERIALS:
1-1: HOUSING : LCP UL94V-0.BLACK
1-2: TERMINAL : C5210; 30u" MIN. Ni UNDERPLATED OVERALL
G/F PALTED ON CONTACT AREA AND SOLDER AREA
1-3: SHELL : SUS301; 30u" Ni UNDERPALTED ON SOLDER AREA
G/F PALTED ON SOLDER AREA
OTHER PLACE NO PLATING

SPECIFICATION:
1-1: CURRENT RATING : 0.5 A. MAX.
1-2: DIELECTRIC WITHSTANDING VOLTAGE : 500V AC R.M.S. FOR 1 MINUTE.
1-3: INSULATION RESISTANCE : 1000MQ MIN.AT 500V DC.
1-4: CONTACT RESISTANCE : 100mΩ MAX.
1-5: OPERATING LIFE: 3000 CYCLES.
1-6: MATING FORCE: 30N MAX.
1-7: UNMATING FORCE: 1N~30N.
1-8: OPERATING TEMPERATURE : -40°C TO +85°C.

PIN Assignment

Pin	SD	SPI
P1	DAT 2	X
P2	CD/DAT 3	CS
P3	CMD	DI
P4	VDD	VDD
P5	CLK	SCLK
P6	VSS	VSS
P7	DAT 0	DO
P8	DAT 1	
P9	SWITCH	
P10	GND	

CIRCUIT DIAGRAM FOR CARD DETECT SWITCH
CARD DETECT SWITCH (PIN 9)

GND(PIN 10)
NORMAL.....SHORT
INSERTING CARD.....OPEN

RECOMMEND PCB LAYOUT
TOLERANCE: ±0.05
TOP VIEW

PCB AREA
CONNECT AREA
KEEP OUT AREA

东 莞 市 金 比 莱 五 金 塑 胶 科 技 有 限 公 司
DongGuan JinBiLai Metal Plastic Technology Co.,Ltd

PART NUMBER:
402013232-A

TITLE:
T-FLASH CARD 8PIN (1.30H)

APPD:
CHKD:
DR:

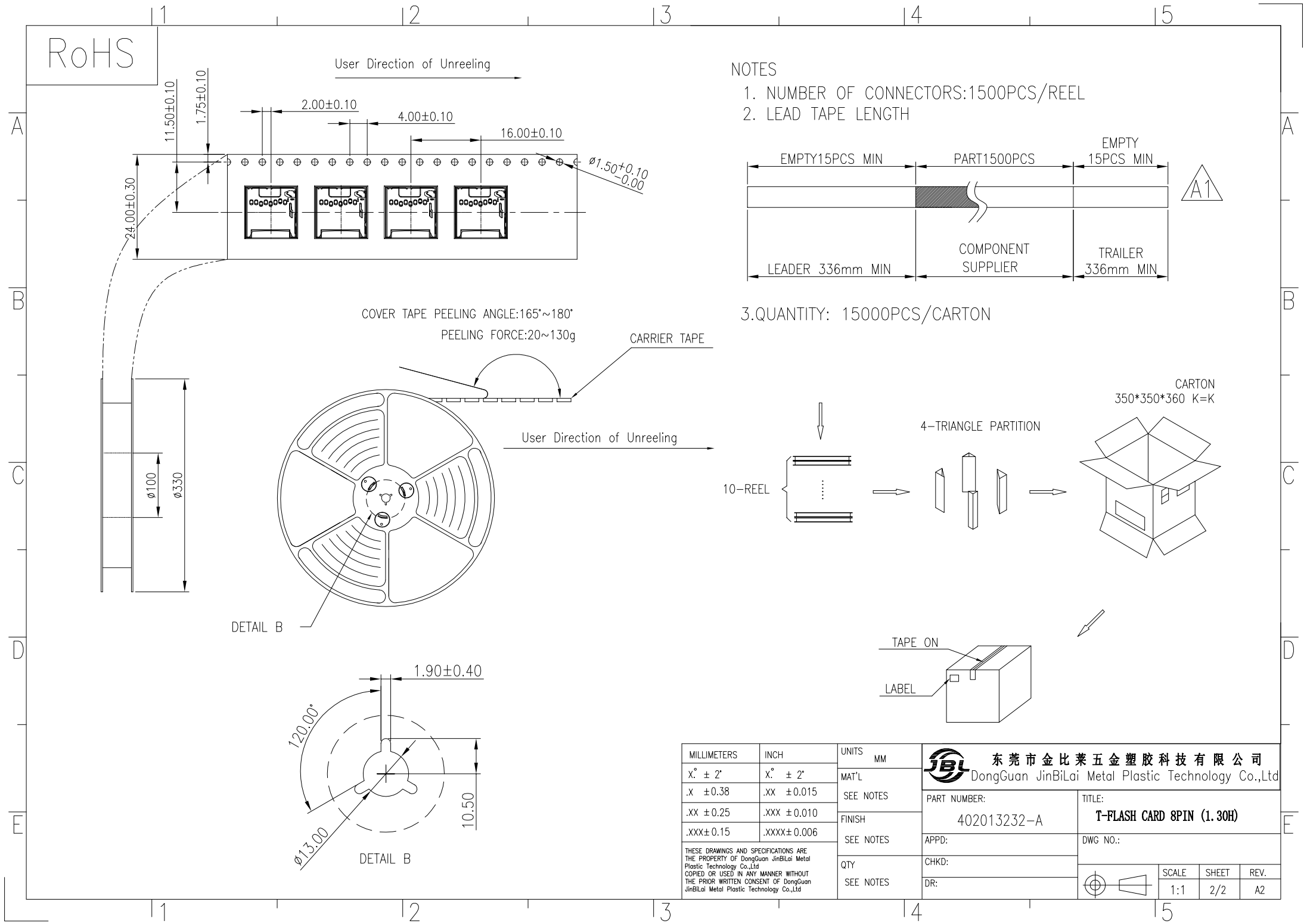
SCALE
1:1



SHEET
1/2

REV.
A2

[illegible]

RoHS



MILLIMETERS	INCH	UNITS	MM	<div>东莞市金比莱五金塑胶科技有限公司</div> <div>DongGuan JinBiLai Metal Plastic Technology Co.,Ltd</div>										
X° ± 2°	X° ± 2°	MAT'L		PART NUMBER: 402013232-A		TITLE: T-FLASH CARD 8PIN (1.30H)								
.X ± 0.38	.XX ± 0.015	SEE NOTES												
.XX ± 0.25	.XXX ± 0.010	FINISH		APPD:		DWG NO.:								
.XXX ± 0.15	.XXXX ± 0.006	SEE NOTES												
THESE DRAWINGS AND SPECIFICATIONS ARE THE PROPERTY OF DongGuan JinBiLai Metal Plastic Technology Co.,Ltd COPIED OR USED IN ANY MANNER WITHOUT THE PRIOR WRITTEN CONSENT OF DongGuan JinBiLai Metal Plastic Technology Co.,Ltd				QTY	CHKD:	<div></div> <table><tr><td>SCALE</td><td>SHEET</td><td>REV.</td></tr><tr><td>1:1</td><td>2/2</td><td>A2</td></tr></table>			SCALE	SHEET	REV.	1:1	2/2	A2
				SCALE	SHEET				REV.					
				1:1	2/2	A2								
SEE NOTES	DR:													