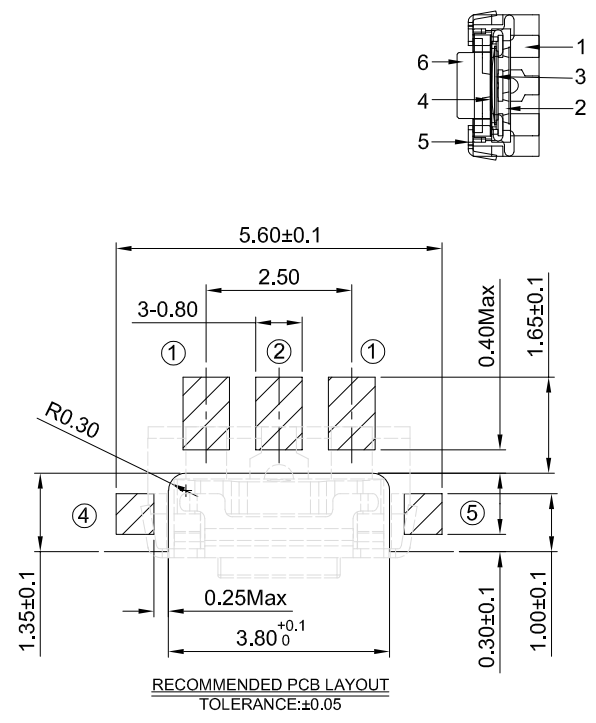
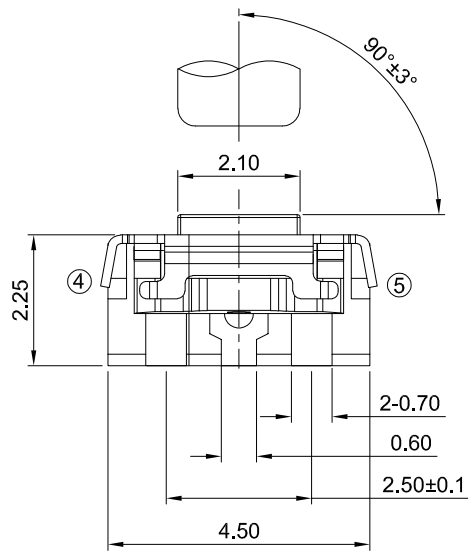


### GT-TD037A-H026-L2

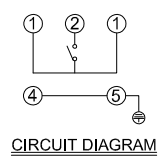
- G-Switch**
- Operating Force**  
A=160gf  
B=250gf  
D=300gf
- Switch Height(mm)**  
H026=2.6
- Switch Lifetime**  
L1=100,000 Cycles  
L2=200,000 Cycles

Keying Tip Tilt



- G-Switch Specification:**
- Operating temperature range: -40°C ~ +85°C
  - Rating: 50mA, 12V DC
  - Insulation resistance: 100MΩ min, 100V DC
  - Dielectric strength: 250V AC for 1 min
  - Contact resistance: 100mΩ max.
  - Travel: 0.15±0.1mm

6	STEM	PPA	BLACK
5	COVER	SUS304	Sn PLATED
4	TAPE	POLYIMIDE	YELLOW (TRANSPARENT)
3	CONTACT	STAINLESS STEEL 301	Ag PLATED
2	BASE	PA9T	BLACK
1	TERMINAL	C5210	Ag PLATED
NO.	PART NAME	MATERIAL	REMARK



SCALE: 1:1 UNIT: mm  
 SIZE: A4

Unless otherwise General Tolerance:  
 X. ±0.30  
 X.x ±0.20  
 X.xx ±0.10  
 X\* ±3°

Title: Horizontal Tact Switch Mid-Mount 2.1 SMT CH=-0.63 5.55×2.90×H2.6mm			
Molde Code: GT-TD037A-H026-L2			
DRAWN	CHECKED	APPROVED	DATE
Jiang	Xia	Chen	2024.03.10



REV: A0 SHEET: 1/1