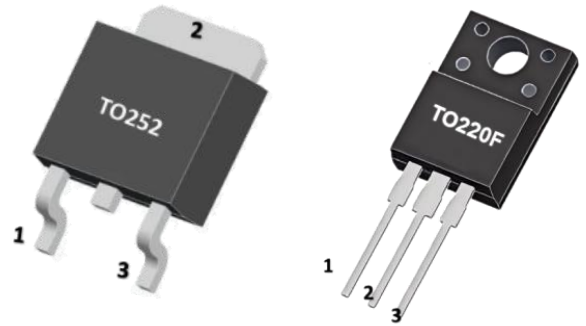


DESCRIPTION

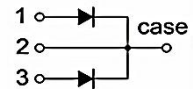
The MBR3065CS/CT meet the ROHS and Green Product requirement with full function reliability approved.

FEATURE

- *Schottky Barrier Chip
- *Guard Ring Die Construction for Transient Protection
- *Low Power Loss,High Efficiency
- *High Surge Capability
- *High Current Capability and Low Forward Voltage Drop
- *For Use in Low Voltage, High Frequency Inverters,Free Wheeling, and Polarity Protection Applications



1. ANODE
2. CATHODE
3. ANODE



MARKING



WPM : LOGO

MBR3065CT=Device Code (TO-220F)

MBR3065CS=Device Code (TO-252)

ABSOLUTE MAXIMUM RATINGS($T_A=25^{\circ}\text{C}$, unless otherwise specified.)

Symbol	Parameter		VALUE	Unit
V_{RRM}	Peak repetitive reverse voltage		65	V
V_{RWM}	Working peak reverse voltage			
V_R	DC blocking voltage			
$V_{R(RMS)}$	RMS reverse voltage		45.5	V
I_o	Average rectified output current		30（15*2）	A
I_{FSM}	Non-Repetitive peak forward surge current (8.3ms half sine wave)		200*2	A
$R_{\theta Jc}$	Thermal resistance from junction to case ,Tc=25℃	TO-252	2	℃/W
		TO-220F	3.0	
$R_{\theta JA}$	Thermal resistance from junction to ambient	TO-252	110	℃/W
		TO-220F	62.5	
T_j	Junction temperature		150	℃
T_{stg}	Storage temperature		-55~+150	℃

Notes: Absolute maximum ratings are those values beyond which the device could be permanently damaged. Absolute maximum ratings are stress ratings only and functional device operation is not implied.

ELECTRICAL CHARACTERISTICS ($T_A=25^\circ\text{C}$, unless otherwise specified)

Parameter	Symbol	Test conditions	Min	Typ	Max	Unit
Reverse voltage	$V_{(BR)}$	$I_R=0.1\text{mA}$	65			V
Reverse current	I_R	$V_R=65\text{V}$	$T_j=25^\circ\text{C}$	5.0	100	μA
			$T_j=125^\circ\text{C}$	5.0		mA
Forward voltage	V_F	$I_F=10\text{A}$	$T_j=25^\circ\text{C}$	0.65	0.68	V
			$T_j=125^\circ\text{C}$	0.58		V
		$I_F=15\text{A}$	$T_j=25^\circ\text{C}$	0.75	0.80	V
			$T_j=125^\circ\text{C}$	0.65		V

*Pulse test: pulse width $\leq 300\mu\text{s}$, duty cycles $\leq 2.0\%$.

TYPICAL CHARACTERISTICS

FIG. 1 MAXIMUM FORWARD CURRENT DERATING CURVE

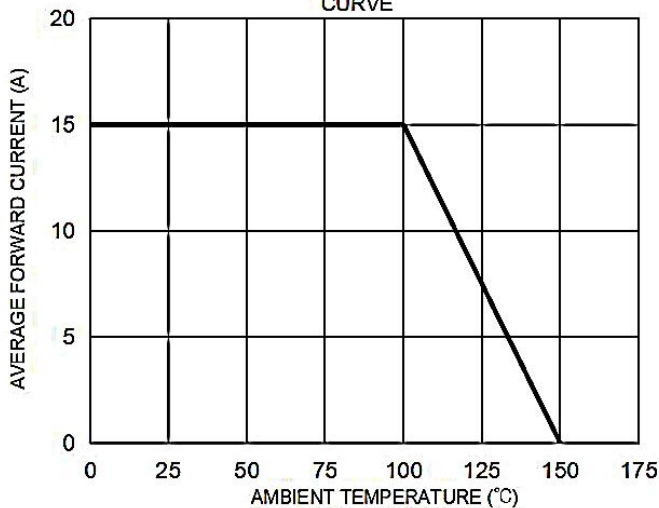


FIG. 2 MAXIMUM NON-REPETITIVE FORWARD SURGE CURRENT PER LEG

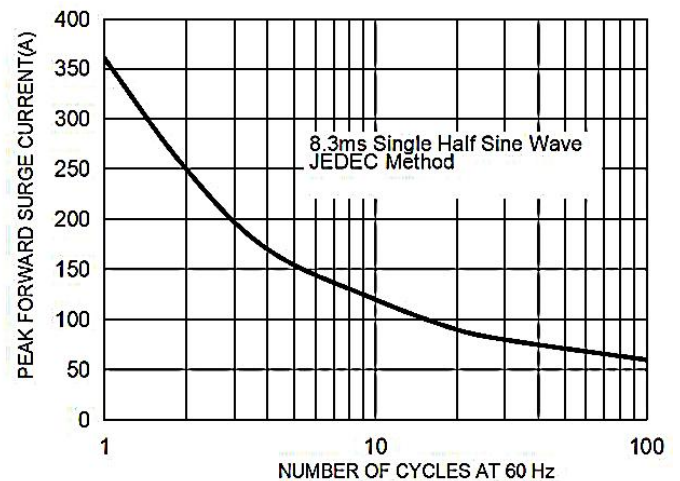


FIG. 3 TYPICAL FORWARD CHARACTERISTICS PER LEG

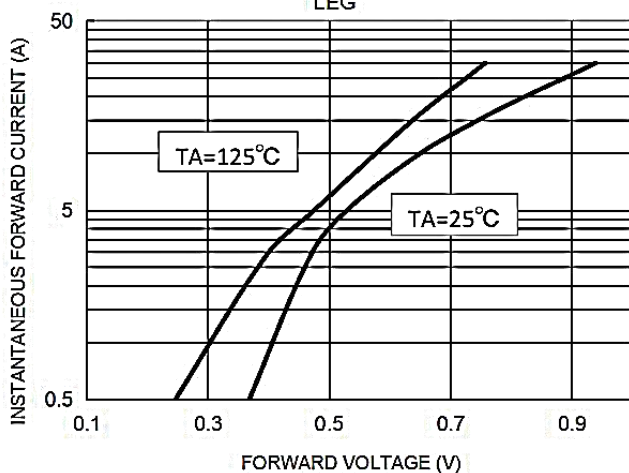
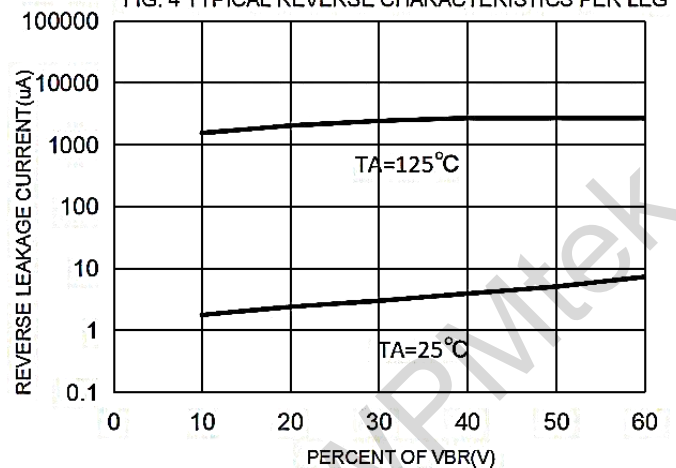
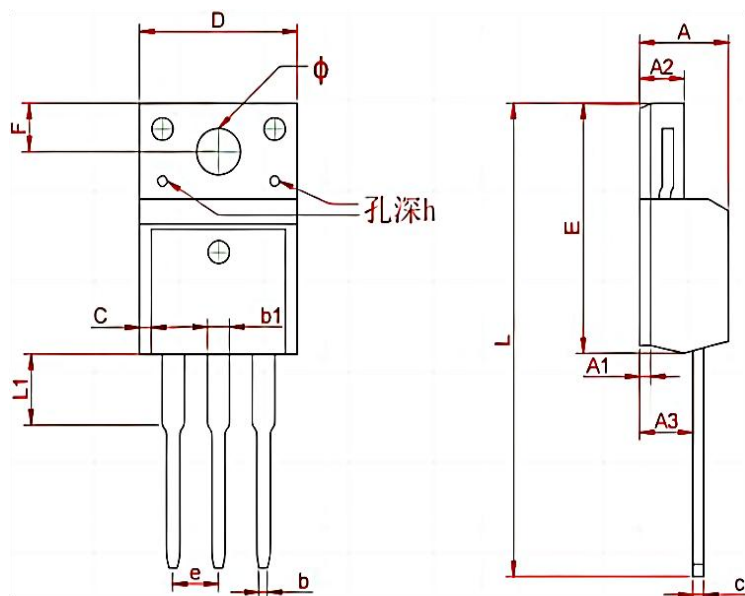


FIG. 4 TYPICAL REVERSE CHARACTERISTICS PER LEG



TO - 220F Package Outline Dimensions



Symbol	Dimensions In Millimeters	
	Min	Max
A	4.300	4.750
A1	0.7 REF	
A2	2.300	2.850
A3	2.500	2.900
b	0.380	0.420
b1	1.220	1.280
C	1.08	1.200
c	0.480	0.520
D	10.15	10.450
E	15.700	15.950
e	2.574 TYP	
F	3.470 REF	
y	3.200 REF	
h	0.000	0.800
L	28.780	28.900
L1	2.990	3.100

TO - 220F Packing Information



50PCS



20 Tube



5 Inner
Box

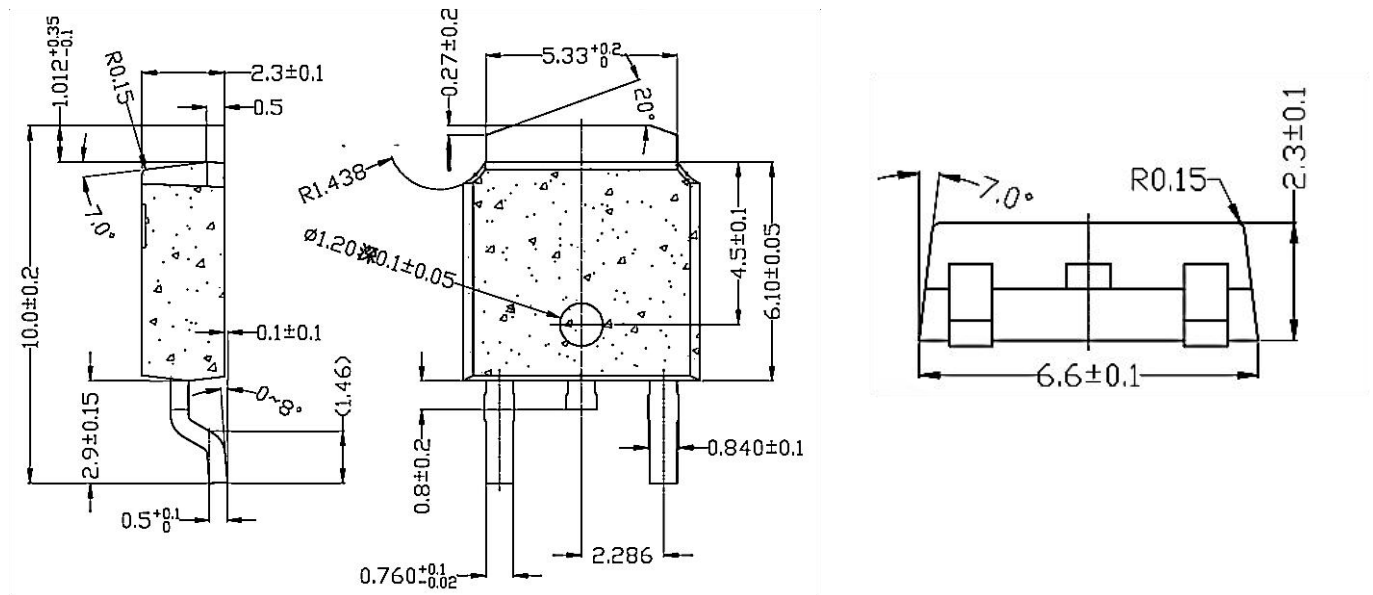


Outer Box

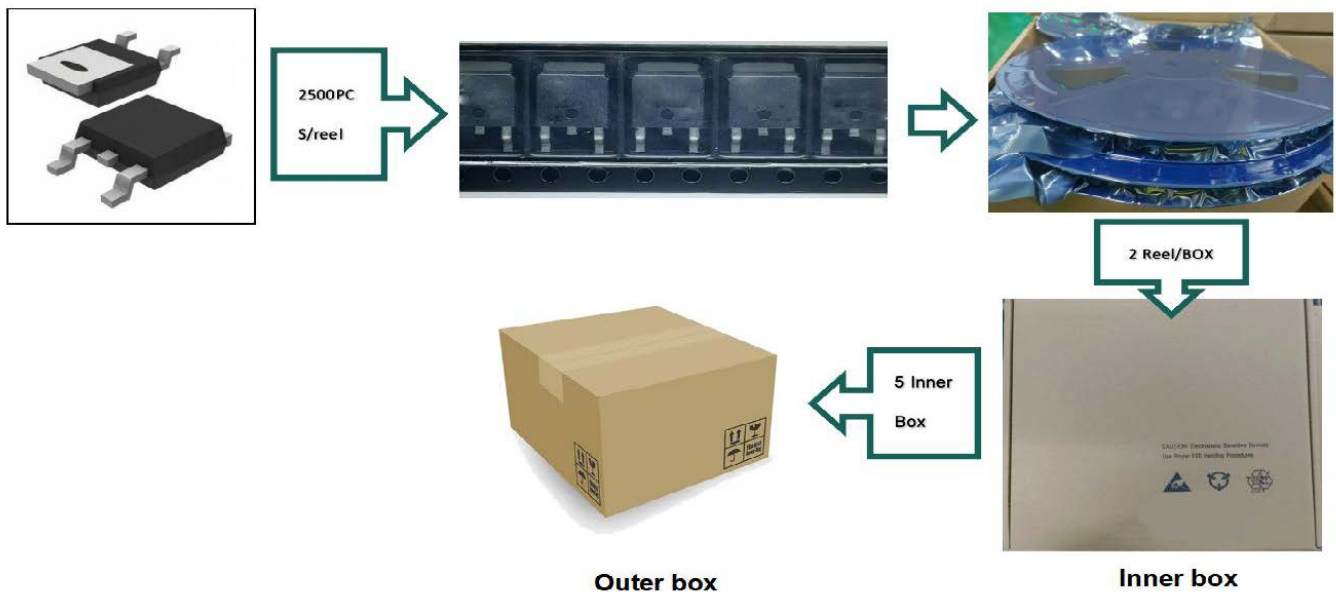
Inner Box

Package version	Tube dimensions LxWxH (mm)	Per Tube (pcs)	Tube per box	Inner box dimensions LxWxH (mm)	PCS/ Inner box	Outer box dimensions LxWxH(mm)	PCS/ Outer box
TO-220F	530*32*7	50	20	580*155*50	1000	602*277*188	5000

TO - 252 Package Outline Dimensions



TO - 252 Packing Information



Package version	Reel dimensions $\Phi \times H$ (mm)	Per Reel (pcs)	Reels per box	Inner box dimensions $L \times W \times H$ (mm)	Outer box (pcs)	Outer box dimensions $L \times W \times H$ (mm)
T0-252	$\Phi 330 \times 20$	2500	2	360*340*50	25000	375*375*280

WPMtek reserves the right to make changes to the product specification and data in this document without notice. WPMtek makes no warranty, representation or guarantee regarding the suitability of its products for any particular purpose, nor does WPMtek assume any liability arising from the application or use of any products or circuits, and specifically disclaims any and all liability, including without limitation special, consequential or incidental damages. Any enquiry, please write to sales@wpmtek.com for further information.