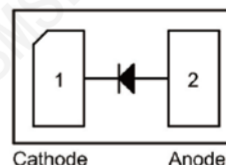
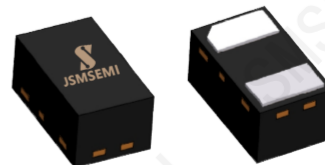


Features and benefits

- ◆ Extremely small surface mounting type.
- ◆ High Speed.



Application information

- ◆ High speed switching

DFN1006-2L

Maximum Ratings (TA=25°C unless otherwise specified)

Symbol	Parameter	Value	Uniat
V_{RM}	Peak reverse voltage	90	V
V_R	DC reverse voltage	80	V
I_{FM}	Peak forward current	225	mA
I_o	Mean rectifying current	100	mA
I_{SURGE}	Surge current (1s)	500	mA
T_J	Junction temperature	125	°C
T_{stg}	Storage temperature	-40 to +125	°C

Electrical Characteristics (TA=25°C unless otherwise specified)

Symbol	Characteristic	Max	Uniat
V_F	Forward voltage($I_F=100mA$)	1.2	V
I_R	Reverse current($V_R=80V$)	0.1	uA
C_T	Capacitance between terminals($V_R=0.5V, f=1MHz$)	3	pF
T_{rr}	Reverse recovery time($V_R=6V, I_F=10mA, R_L=100\Omega$)	4	nS

Typical Characteristics

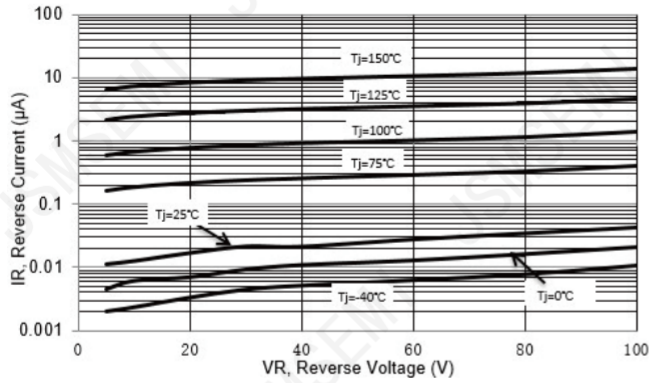


Fig 1.Reverse Current vs. Reverse Voltage

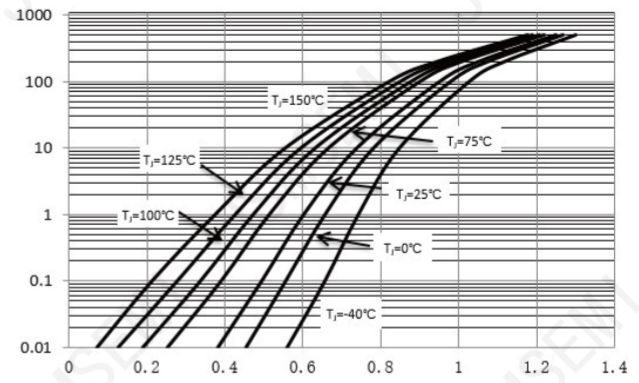


Fig 2.Forward Characteristics

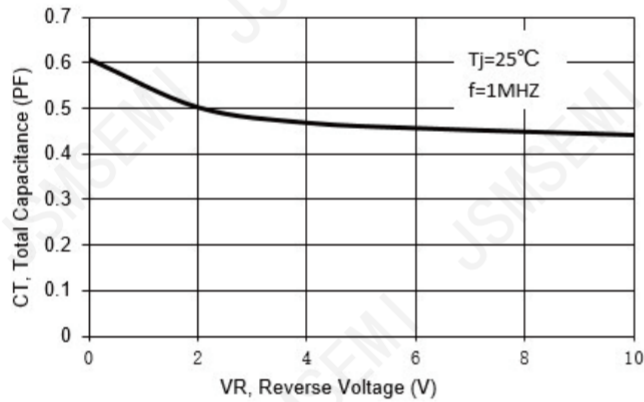
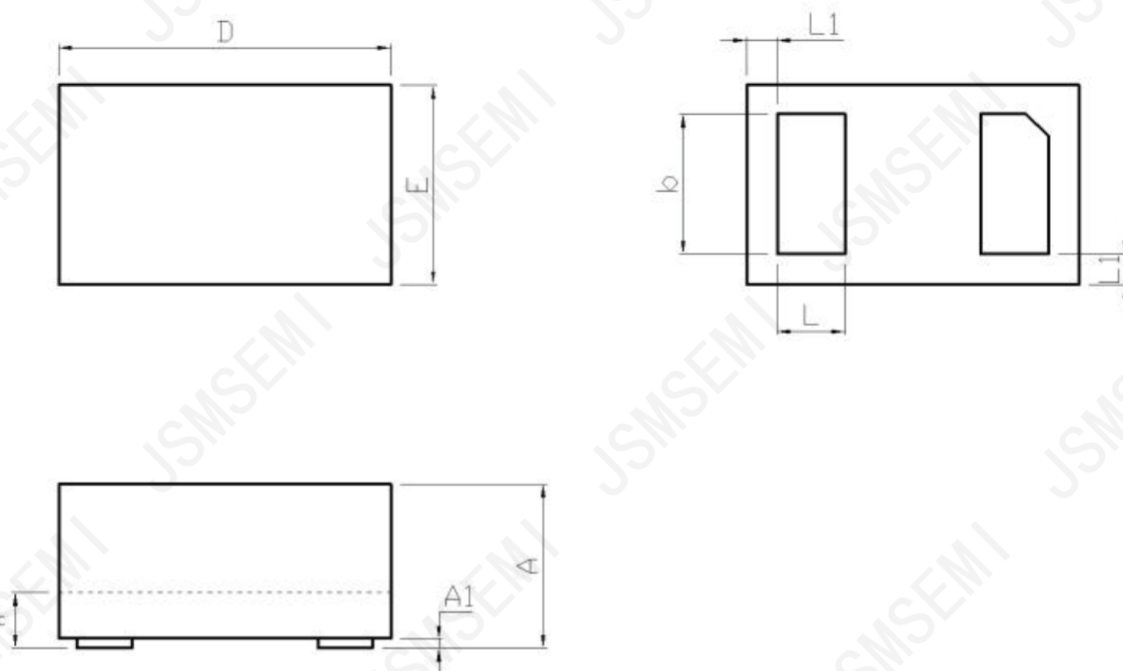


Fig 3.Total Capacitance vs.Reverse Voltage

DFN1006-2L Package Outline Dimensions



DFN1006-2L (mm)			
DIM	MIN	TYP.	MAX
A	0.40	0.50	0.55
A1	0	0.02	0.05
b	0.45	0.5	0.55
c	0.1	0.15	0.18
D	0.95	1.00	1.05
E	0.55	0.60	0.65
L	0.20	0.25	0.30

Revision History

Rev.	Change	Date
V1.0	Initial version	2/23/2024

Important Notice

JSMSEMI Semiconductor (JSMSEMI) PRODUCTS ARE NEITHER DESIGNED NOR INTENDED FOR USE IN MILITARY AND/OR AEROSPACE, AUTOMOTIVE OR MEDICAL DEVICES OR SYSTEMS UNLESS THE SPECIFIC JSMSEMI PRODUCTS ARE SPECIFICALLY DESIGNATED BY JSMSEMI FOR SUCH USE. BUYERS ACKNOWLEDGE AND AGREE THAT ANY SUCH USE OF JSMSEMI PRODUCTS WHICH JSMSEMI HAS NOT DESIGNATED FOR USE IN MILITARY AND/OR AEROSPACE, AUTOMOTIVE OR MEDICAL DEVICES OR SYSTEMS IS SOLELY AT THE BUYER' S RISK.

JSMSEMI assumes no liability for application assistance or customer product design. Customers are responsible for their products and applications using JSMSEMI products.

Resale of JSMSEMI products or services with statements diferent from or beyond the parameters stated by JSMSEMI for that product or service voids all express and any implied warranties for the associated JSMSEMI product or s ervice. JSMSEMI is not responsible or liable for any such statements.

JSMSEMI All Rights Reserved. Information and data in this document are owned by JSMSEMI wholly and may not be edited, reproduced, or redistributed in any way without the express written consent from JSMSEMI.

Any and all information described or contained herein are subject to change without notice due to product/technology improvement, etc. When designing equipment, refer to the "Delivery Specification" for the JSMSEMI product that you intend to use.

For additional information please contact Kevin@jsmsemi.com or visit www.jsmsemi.com