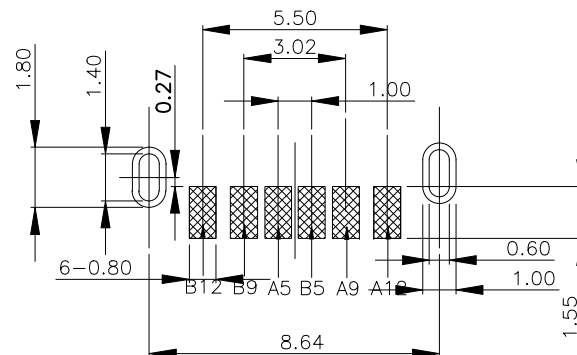
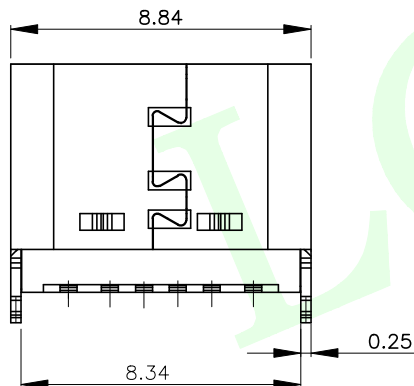
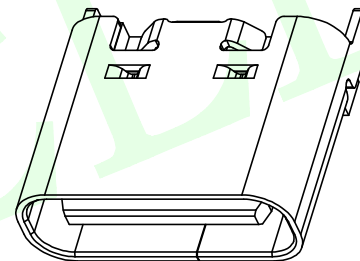
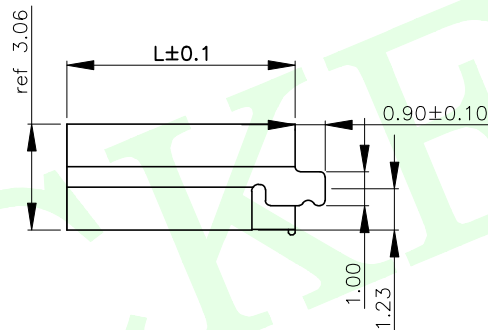
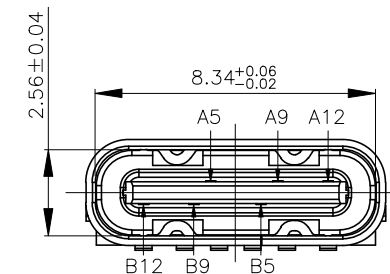
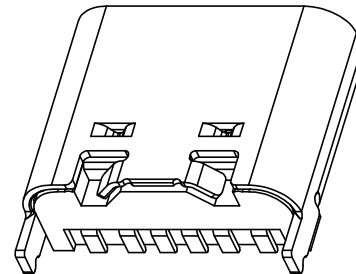
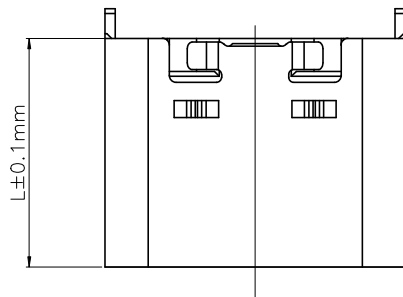
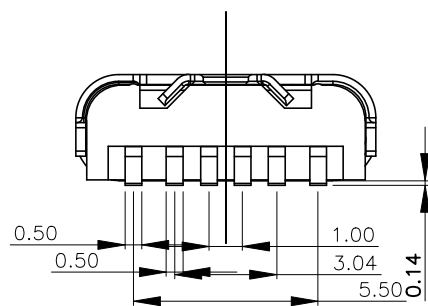


RoHS Compliant



RECOMMENDED P.C.B. LAYOUT
TOLERANCE UNSPECIFIED ±0.05mm

A5	CC1	B5	CC2
A9	VBUS	B9	VBUS
A12	GND	B12	GND
PIN	SIGNAL NAME	PIN	SIGNAL NAME

NOTE:

- 1.MATERIAL SPECIFICATION:
1.HOUSING:HIGH TEMPERATURE RESISTANT PLASTIC,UL94 V-0.
2.CONTACTS:COPPER ALLOY
3.MID PLATE: STAINLESS STEEL
4.FRONT SHELL: STAINLESS STEEL
- 2.PLATING SPECIFICATION:
2-1.CONTACTS:
Ni 30u" MIN. UNDER PLATED OVER ALL.
Au PLATED ON THE FUNCTIONAL AREA OF CONTACT.
(GOLD PLATING THICKNESS FOLLOW THE P/N)
PLATING SPECIFICATIONS OF THE SOLDER AREA FOLLOW THE P/N
- 2-2.FRONT SHELL:
SEE TABLE1.
- 2-3.SHIELD PLATE&EMI PLATE:
CLEAR ONLY
- 3.MECHANICAL PERFORMANCE,
3-1.INSERTION FORCE: 0.5~2.0kgf.
3-2.REMOVAL FORCE: 0.8kgf~2.0kgf.
3-3.DURABILITY: 5000 CYCLES.
- 4.ELECTRICAL PERFORMANCE,
4-1. CURRENT RATING:3.0A
VOLTAGE RATING:5.0V
4-2. LLCR:
VBUS & GND PINS AND OTHER PINS: 40mA/PIN MAX.
SHIELD: 50mA/MAX.
LLCR MAX. CHANGE OF ALL PINS: 10mA.
4-3.INSULATION RESISTANCE: 100MΩ MIN
4-4.DIELECTRIC WITHSTAND VOLTAGE,AC 100V FOR 1 MINUTE.
5. ENVIRONMENTAL PERFORMANCE:
OPERATING TEMPERATURE: -25°C~+85°C.
- 6.IR REFLOW:
THE PEAK TEMPERATURE ON THE BOARD SHALL
BE MAINTAINED FOR 10 SECONDS AT 260°C.

LCK-TCF 304B-LXX W L- G1

连晟欣
LCK

产品类别

TCF: TYPE C 母头

TCM: TYPE C 公头

产品流水料号识别码

电镀规格
G1: 1U
G3: 3U
(以此类推)

包装方式
L: 圆盘
B: 吸塑盒
T: 管装

有柱无柱
Y: 有柱
W: 无柱

高度
L50: 5.1
L55: 5.5
L65: 6.5
L68: 6.8
L740: 7.40

MEASURE POINT:

QUADRANT POINT

QP

TANGENCY POINT

TP

INTERSECTION POINT

IP

UNLESS OTHERWISE

SPECIFIED, TOLERANCE:

X. ±0.25

X.x ±0.20

X.xx ±0.15

ANGULAR ±3°

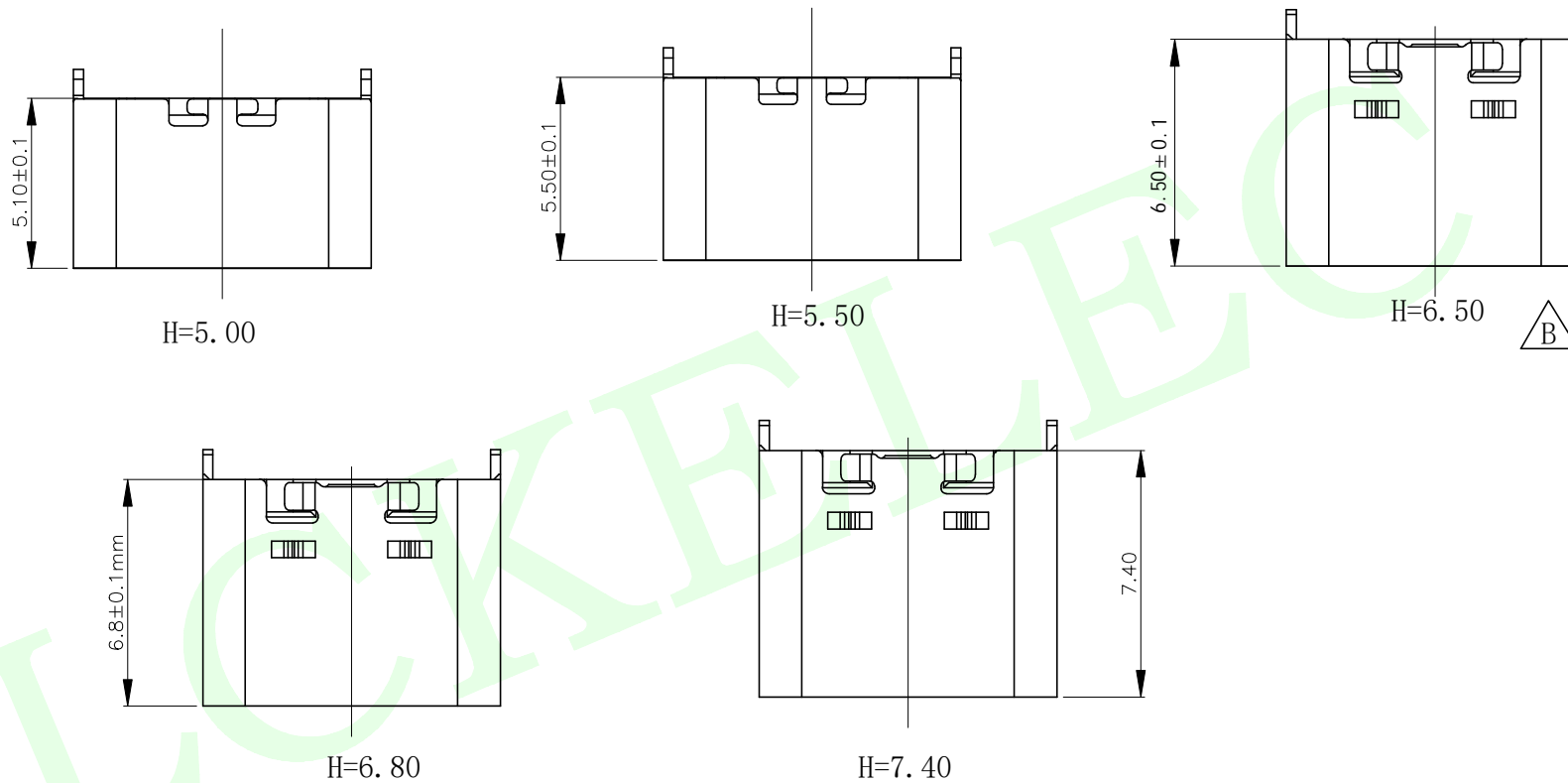


联晟欣连接器（深圳）有限公司
Lianshengxin Connector (Shenzhen) Co., Ltd

DESIGN	Andy	DATE	2014.12.24	TITLE:	USB TYPE C 6PIN 立贴贴片脚长0.9
CHECKED		DATE			H5. 1&7.4不露舌
APPROVED		DATE			
PART NO:	LCK-TCF304B-LXXWL-G1	REV:	04	SCALE:	1:1
DRAWING NO:		SIZE:	A4	SHEET:	1/1
		UNIT:	mm		

RoHS Compliant

USB TYPE C 6PIN SMT 立贴所有高度示意图:



PART No.	DIM H
LCK-TCF304B-L50WL-G1	5.1
LCK-TCF304B-L55WL-G1	5.6
LCK-TCF304B-L65WL-G1	6.5
LCK-TCF304B-L68WL-G1	6.8
LCK-TCF304B-L740WL-G1	7.40

MEASURE POINT: QUADRANT POINT TANGENCY POINT INTERSECTION POINT		QP TP IP		 联晟欣连接器（深圳）有限公司 Lianshengxin Connector (Shenzhen) Co., Ltd	
UNLESS OTHERWISE SPECIFIED, TOLERANCE:		DESIGN	Andy	DATE	2014.12.24
X. ±0.25		CHECKED		DATE	
X.x ±0.20		APPROVED		DATE	
X.xx ±0.15		PART NO: LCK-TCF304B-LXXWL-G1		REV: 04	SCALE: 1:1
ANGULAR ±3°		DRAWING NO:		SIZE: A4	SHEET: 1/1
				UNIT: mm	