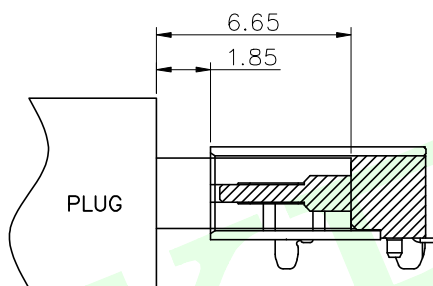
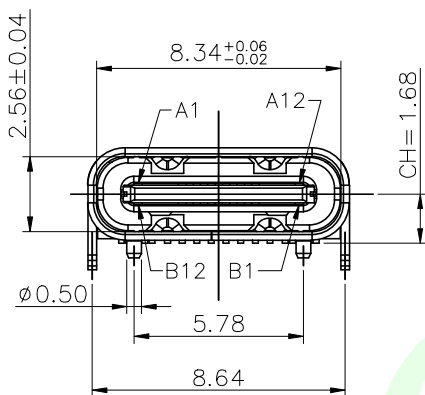
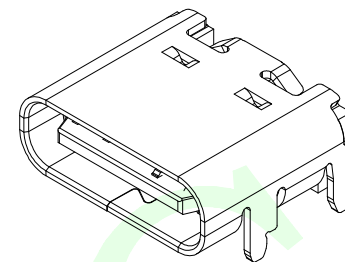
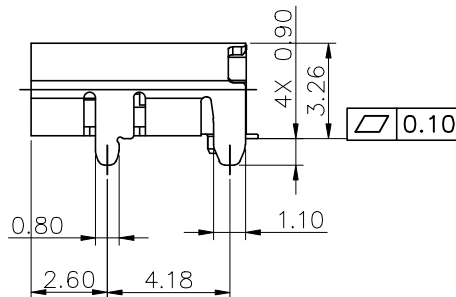
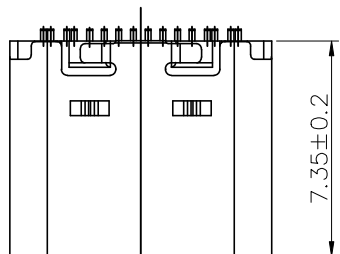


RoHS Compliant



公母对插后尺寸

备注:

1. 材质及电镀: 见附表1

2. 电气性能:

2.1 接触电阻: 30mΩ Max FOR INITIAL.  
40mΩ Max AFTER TEST.

2.2 耐电压: 100V AC

2.3 绝缘: 100MΩ Min

2.4 额定电流:

COLLECTIVELY VBUS PIN (A4,A9,B4,B9) ,TOTAL 5A  
VCCON PIN (B5) THROUGH GND PIN(A1,A12,B1,B12),1.25A  
OTHERS PIN, 0.25A

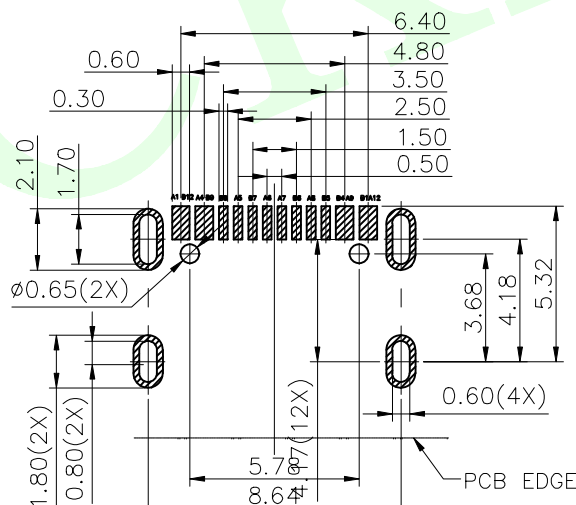
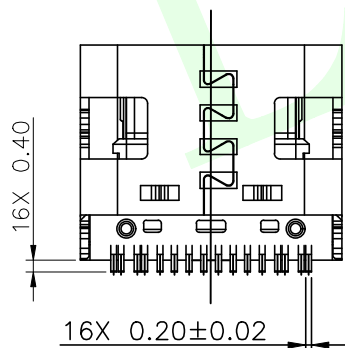
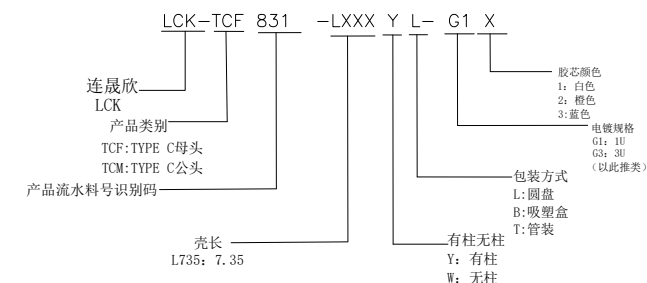
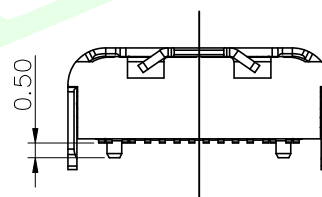
2.5 工作温度: -40°C ~ 80°C.

3. 机械性能:

3.1 插入力: 5~20N.

3.2 拔出力: 初始值8~20N测试后6~20N

3.3 寿命: 10,000 CYCLES



RECOMMENDED PCB LAYOUT(TOP VIEW)  
THICKNESS 0.80MM;DEFAULT TOLERANCE:±0.05

07	外壳	不锈钢	1	SUS 304 1/2H,T0.30
06	二次Molding件	LCP	1	黑色 UL94 V-0
05	Molding件2	LCP	1	黑色 UL94 V-0
04	Molding件1	LCP	1	黑色 UL94 V-0
03	中夹片	SUS301-H T=0.15	1	不电镀
01	端子	C2680-H T=0.15	1set	功能接触区镀金, 焊脚镀金
序号	品名	材质	用量	备注

QUADRANT POINT (QP)  
TANGENCY POINT (TP)  
INTERSECTION POINT (IP)

UNLESS OTHERWISE SPECIFIED,TOLERANCE:

X. ±0.25  
X.x ±0.20  
X.xx ±0.15  
ANGULAR ±3°

联晟欣连接器(深圳)有限公司  
Lianshengxin Connector (Shenzhen) Co., Ltd

DESIGN	Andy	DATE	2014.12.24	TITLE:
CHECKED		DATE		TYPE C 16PIN单排卧式7.35mm 母座
APPROVED		DATE		黄铜
PART NO:	LCK-TCF831-L735YL-G1	REV:	04	SCALE: 1:1
DRAWING NO:		SIZE:	A4	UNIT: mm
		SHEET:	1/1	