



Repair electronics Expert

专业研发及生产液晶屏维修设备
Professional R&D and production of LCD screen repair equipment

PRODUCT FUNCTION APPLICATION 产品功能应用



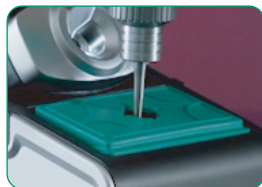
可同时使用T245与T210工作
Can use T245 and T210 at the same time

可支持两个人同时一起工作使用，快捷高效
Can support two people working together at the same time, fast and efficient



无线充电
Wireless charging

将手机放310主机上可自动给手机充电
Put the mobile phone on the 310 host to automatically charge the mobile phone



电动自动清洁槽（选配）
Electric automatic cleaning tank

将需要清洁的烙铁头放入清洁槽内，自动清洁，**请勿到底**
Place the soldering iron tip that needs to be cleaned into the cleaning tank for automatic cleaning. **Do not put it to the bottom.**



烙铁头更换
Soldering tip replacement

拆卸：与突出部分卡主向后拔出
安装：放入洞内向下按压
Removal: Pull out the protruding part by pulling it backwards
Installation: Put it into the hole and press down

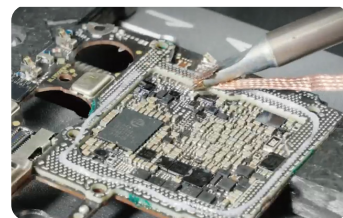


烙铁头放置
Soldering Iron Tip Placement

可将需要备用的烙铁头放置洞内
The spare soldering iron tip can be placed in the hole

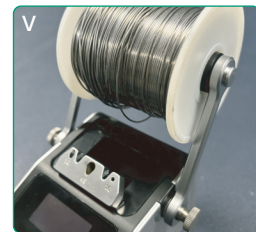
SCENARIO APPLICATION 场景应用

● Electronics Repair 电子维修

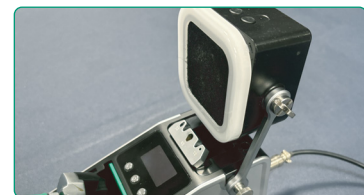


EXTENSION BRACKET INSTALLATION 拓展支架安装

锡线模式安装/Solder wire mode installation



风机模式安装/Fan mode installation



配件拓展需另购
如有需请联系客服采购

Fan expansion needs to be purchased separately
If necessary, please contact customer service for purchase

USER MANUAL 使用手册



智能双工位焊台

INTELLIGENT DOUBLE-STATION SOLDERING STATION

Benefit users around the world with innovative tools.

Thank you for using our products. Please read this instruction and safety instructions carefully before using this product, and keep this instruction properly. In order to protect your rights, please confirm the completeness of the following information before you use it:

感谢您使用我们的产品，使用本产品前请仔细阅读本使用说明和安全须知，请妥善保管本使用说明。为了保护您的权益，在您使用前，请确认以下资料的完备性：

USE SAFELY 使用安全

Before and after using this product, please pay attention to the following safety precautions to avoid personal injury or property damage:

- Please use this product within the specified voltage range to avoid excessively high or low voltage, which may cause product damage or danger.
- Do not place this product near flammable or explosive items to avoid fire or explosion.
- Do not immerse this product in water or contact it with liquid to avoid electrical failure or electric shock.
- Do not disassemble or modify this product to avoid damage to the product or affect its performance.
- Do not use this product for illegal or unreasonable purposes to avoid unnecessary trouble or liability.
- Please comply with relevant laws and regulations when using this product and respect the intellectual property rights and privacy rights of others.

在使用本产品前后，请注意以下安全事项，以免造成人身或财产的损害：

- 请在指定的电压范围内使用本产品，避免过高或过低的电压，导致产品损坏或发生危险。
- 请勿将本产品放置在易燃或易爆的物品附近，避免引起火灾或爆炸。
- 请勿将本产品浸入水中或接触液体，避免造成电气故障或触电。
- 请勿将本产品拆开或改装，避免损坏产品或影响产品性能。
- 请勿将本产品用于非法或不合理的用途，避免造成不必要的麻烦或责任。
- 请在使用本产品时，遵守相关的法律法规，尊重他人的知识产权和隐私权。

TROUBLE SHOOTING 故障排除

- This product cannot be powered on or connected: Please check whether the power cord and data cable are properly plugged in, whether the power socket is normal, and whether the power switch is turned on. If the problem persists, please contact our after-sales service.
- The output data of this product is inaccurate or abnormal: Please check whether the output line is in good contact, whether the output device is working properly, and whether the output parameters are reasonable. If the problem persists, please contact our after-sales service.

- 本产品无法通电或连接：请检查电源线、数据线是否插好，电源插座是否正常，电源开关是否打开，如果问题仍然存在，请联系我们的售后服务。
- 本产品输出数据不准确或异常：请检查输出线是否接触良好，输出设备是否正常工作，输出参数是否合理，如果问题仍然存在，请联系我们的售后服务。

PRODUCT INTRODUCTION 产品介绍

The smart portable dual soldering station is small and portable, heats up in three seconds, comes with 210 and 245 soldering irons, wireless charging, automatic sleep, energy saving and safety. It is also equipped with an expandable bracket, which can flexibly adapt to various scenarios, and is efficient and convenient.

智能便携式双焊台，小巧便携、三秒速热、标配210与245烙铁、更有无线充电功能，自动休眠，节能安全。还配备可拓展支架，灵活适应各种场景，高效便捷一步到位。

MAINFRAME SCHEMATIC 主机示意图



①.无线充电 Wireless charging	⑪.拓展孔位 Expand hole
②.4.3寸屏 4.3-inch screen	⑫.210烙铁 soldering iron
③.烙铁更换 Soldering Iron Replacement	⑬.休眠接口1 Sleep interface 1
④.245烙铁 Soldering iron	⑭.电源 Power supply
⑤.烙铁清洁 Soldering iron cleaning	⑮.系统更新 System update
⑥.245快捷1 Quick access 1	⑯.210接口 interface
⑦.245快捷2 Quick access 2	⑰.休眠接口1-接 Sleep interface 1-connection
⑧.功能键 Function keys	⑱.休眠接口2-接 Sleep interface 2-connection
⑨.210快捷1 Quick access 1	⑲.245接口 interface
⑩.210快捷2 Quick access 2	⑳.休眠接口2 Sleep interface 2

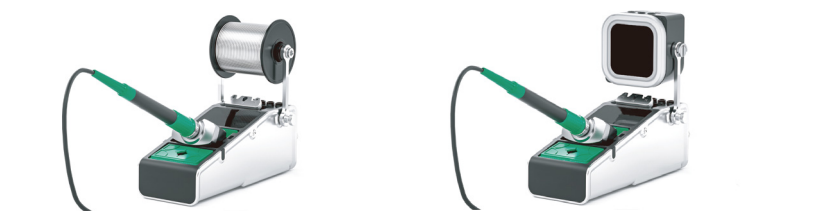
SPECIFICATION PARAMETERS 规格参数

工作电压 Operating voltage	AC220V
产品功率 Product Power	250W
工作温度 Operating temperature	100°~500°C
充电功率 Charging power	20W
休眠功能 Sleep function	感应休眠 Sensing Sleep
充电方式 Charging method	无线充电 Wireless charging

PRODUCT ACCESSORIES 产品配件



PRODUCT EXPANSION 产品拓展



搭配锡线操作更方便
It is more convenient to operate with solder wire

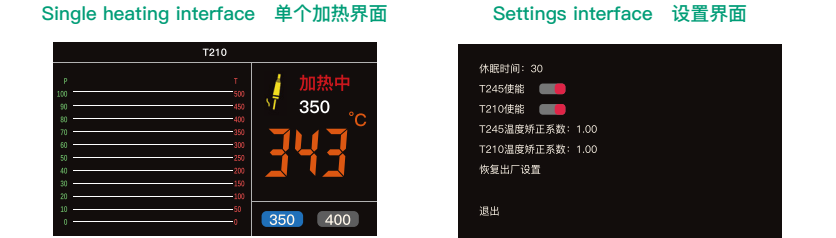
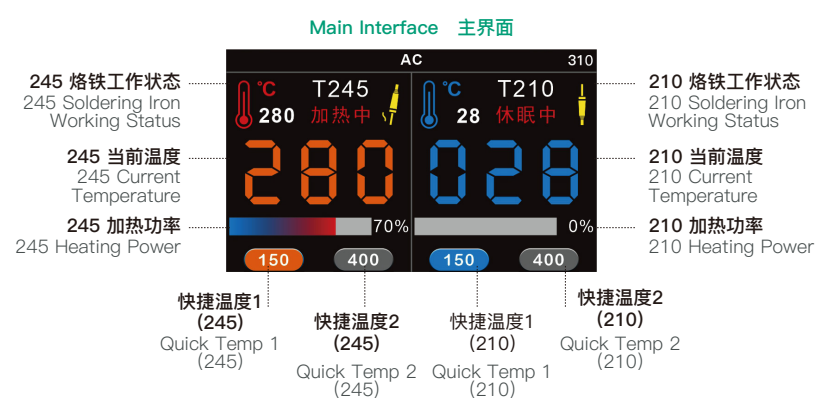
搭配风机操作工作无烟无害
Operate with fan, smoke-free and harmless

拓展配件请联系客服购买
Please contact customer service to purchase expansion accessories

Soldering Iron Cleaning Tank 烙铁清洁槽



INTERFACE OPERATION INSTRUCTIONS 界面操作说明



BUTTON OPERATION INSTRUCTIONS/按钮操作说明

