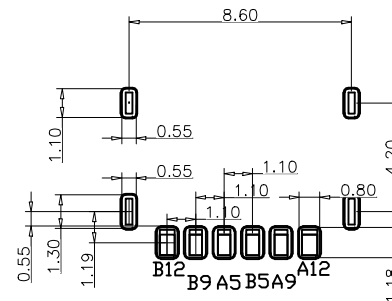
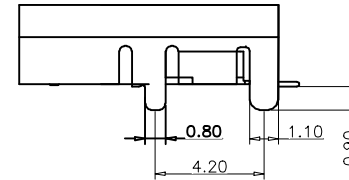
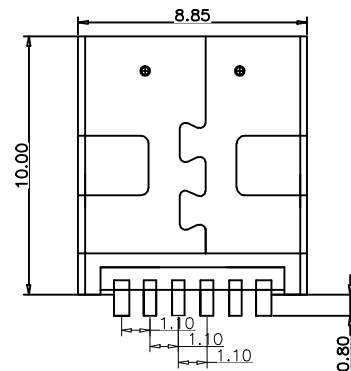
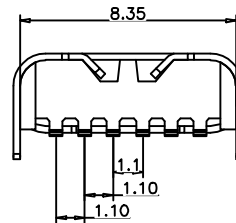
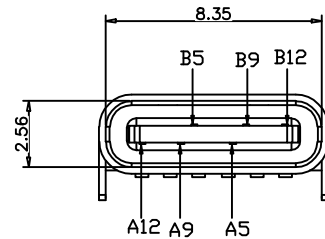
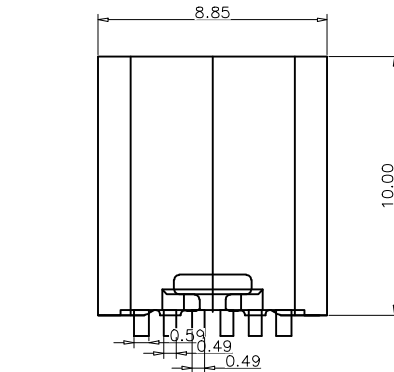


专利授权产品

REV.	ECN	DESCRIPTION	MDF'D	DATE
		新订图面		



RECOMMEND P.C.B LAYOUT (COMPONENT SIDE)
TOLERANCE FOR PCB LAYOUT IS ± 0.05

备注 (NOTE):

1 材质:

1.1 胶芯: LCP UL94 V-0

1.2 端子: C2680, T=0.2mm; 镍底, 镀金

1.3 外壳: 不锈钢201-H 表面镀镍

2. 电气特性:

2.1 接触区: 接触电阻40m Ω Max, 允许10m Ω 变化量. 测试条件: 20mv, 100mA下测量.

2.2 接触电流: 3A VBUS引脚; 1.25A用于GND引脚; 其他引脚为0.25A.

2.3 额定电压: 5V.

2.4 耐电压: 100VAC.

2.5 绝缘电阻: 至少100兆欧.

3. 机械性能:

3.1 插入力: 0.5-2.0Kg

3.2 拔出力: 0.6-2.04Kg

3.3 插拔次数: 5000次.

4. 工作环境: -20 $^{\circ}$ C to +85 $^{\circ}$ C.

USB TYPE C PIN ASSIGNMENTS

PIN NUMBER	SIGNAL NAME	PIN NUMBER	SIGNAL NAME
		B12	GND
		B9	VBUS
A5	CC1		
		B5	CC2
A9	VBUS		
A12	GND		

TABLE:

NO	PART	Q'TY	Material
1	SHELL	1	ZINC ALLOY, NI30u"Min PLATED
2	CONTACT	6	C2680, TIN80u"/Au1u"/Ni30u" PLATED
3	1MD HOUSING	1	LCP UL94 V-0 BLACK
4	CAP	1	LCP UL94 V-0 BLACK
5	WATERPROOF RING	1	SILICONE UL94 V-0 BLACK

浙江创都电子科技有限公司

品名 (ITEM NO)	TYPE-C-6PBS-10.0	页码 (SHEET)	1	单位 (UNIT): MM
料号 (PART NO)	6P-BS-10.0	版本 (REV)	A1	比例 (SCALE) 1:1
图号 (DWG NO)	A1	日期 (DATE)	2022. 11. 28	
		设计 (DESIGN)	M	未注公差
		审核 (CHECKED)		TOLERANCE UNDESIGNATED
		核准 (APPROVED)		I I ± 0.20
				I II ± 0.15
				I III ± 0.10
				I IV ± 0.05
				I V ± 0.02