

# MSKSEMI 美森科

SEMICONDUCTOR



ESD



TVS



TSS



MOV



GDT



PLED

## NXS0101G

Product specification

## Description

This one-bit non-inverting translator which is a bidirectional voltage-level translator and can be used to build digital switching compatibility between multi voltage systems. This IC uses two separate configurable power supply tracks that including A ports supporting operating voltages from 1.65 V to 3.6 V with tracking  $V_{CCA}$  supply, and also including B ports supporting operating voltages from 2.3 V to 5.5 V with tracking  $V_{CCB}$  supply.

The advantage above provides the support of both lower and higher logic signal levels while providing bidirectional translation capabilities between any of the 1.8-V, 2.5-V, 3.3-V, and 5- V voltage circuit points.

Placing output-enable (OE) input to low level, all I/Os are forced to high-impedance state that significantly lower the quiescent current consumption. In order to ensure the high-impedance state during power up or power down, OE pin should be tied to GND via a pulldown r


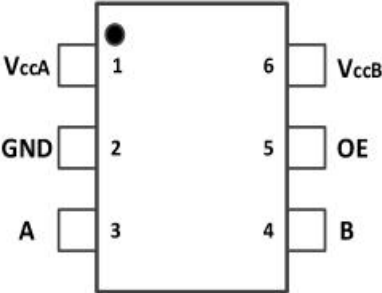

## Features

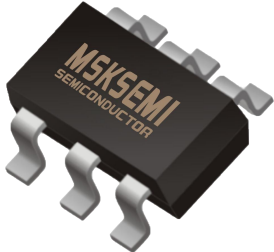
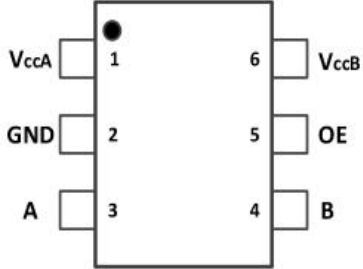

- No direction -control
- Data rates  
24 Mbps (Push Pull)  
2 Mbps (Open)
- 1.65 V to 3.6 V on A port and 2.3 V to 5.5 V on B port ( $V_{CCA} \leq V_{CCB}$ )
- VCC isolation feature: If either VCC input is at GND, both ports are in the high -impedance state
- No power -supply sequencing required: either  $V_{CCA}$  or  $V_{CCB}$  can be ramped first
- $I_{off}$  supports partial -power -down mode operation
- Operating temperature range:  $-40^{\circ}\text{C}$  to  $+85^{\circ}\text{C}$

## Applications

- Handset/Smartphone
- MART
- IPC
- GPIO

## Reference News

| SC70-6                                                                              | Pinning and Package                                                                  | Marking                                                                               |
|-------------------------------------------------------------------------------------|--------------------------------------------------------------------------------------|---------------------------------------------------------------------------------------|
|  |  |  |

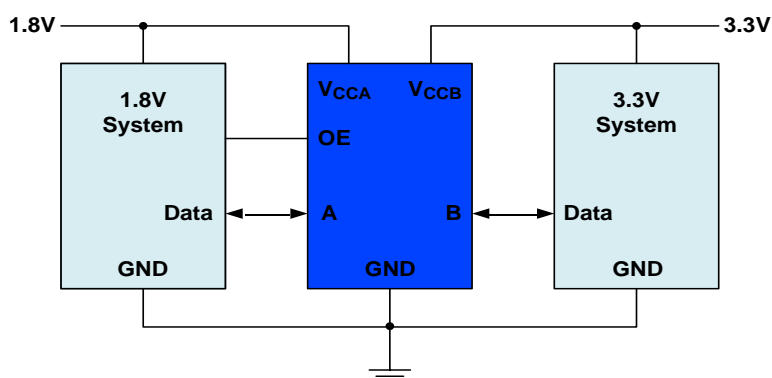
| SOT-23-6                                                                            | Pinning and Package                                                                 | Marking                                                                               |
|-------------------------------------------------------------------------------------|-------------------------------------------------------------------------------------|---------------------------------------------------------------------------------------|
|  |  |  |

**Device Summary, Pin and Packages (Continued)**

| Name             | Pin       |  | I/O | Function                                                                                                       |
|------------------|-----------|--|-----|----------------------------------------------------------------------------------------------------------------|
|                  | DBVR/DCKR |  |     |                                                                                                                |
| V <sub>CCA</sub> | 1         |  | -   | A Port Supply Voltage. $1.65V \leq V_{CCA} \leq 5.5V$ and $V_{CCA} \leq V_{CCB}$                               |
| GND              | 2         |  | -   | Ground                                                                                                         |
| A                | 3         |  | I/O | Input/Output A. Referenced to V <sub>CCA</sub> .                                                               |
| B                | 4         |  | I/O | Input/Output B. Referenced to V <sub>CCB</sub> .                                                               |
| OE               | 5         |  | I   | Output Enable(Active High). Pull OE low to place all outputs in 3-state mode. Referenced to V <sub>CCA</sub> . |
| V <sub>CCB</sub> | 6         |  | -   | B Port Supply Voltage. $2.3V \leq V_{CCB} \leq 5.5V$                                                           |

**Order information**

| Orderable Device | Package         | Packing Option |
|------------------|-----------------|----------------|
| NXS0101GWH-MS    | TSSOP-6(SC70-6) | 3000PCS        |
| NXS0101GWT-MS    | SOT-23-6        | 3000PCS        |

**Circuit Diagram**


## Absolute Maximum Ratings

| Parameters                                                                          |           | Min  | Max           | Unit               |
|-------------------------------------------------------------------------------------|-----------|------|---------------|--------------------|
| Supply voltage, $V_{CCA}$                                                           |           | -0.3 | 6.0           | V                  |
| Supply voltage, $V_{CCB}$                                                           |           | -0.3 | 6.0           | V                  |
| Input voltage range, $V_i$                                                          | A port    | -0.3 | 6.0           | V                  |
|                                                                                     | B port    | -0.3 | 6.0           |                    |
| Voltage range applied to any output in the high-impedance or power-off state, $V_o$ | A port    | -0.3 | 6.0           | V                  |
|                                                                                     | B port    | -0.3 | 6.0           |                    |
| Voltage range applied to any output in the high or low state, $V_o$                 | A port    | -0.3 | $V_{CCA}+0.3$ | V                  |
|                                                                                     | B port    | -0.3 | $V_{CCA}+0.3$ |                    |
| Input clamp current, $I_{IK}$                                                       | $V_i < 0$ |      | -50           | mA                 |
| Output clamp current, $I_{OK}$                                                      | $V_o < 0$ |      | -50           | mA                 |
| Continuous output current, $I_o$                                                    |           |      | $\pm 50$      | mA                 |
| Continuous current through $V_{CCA}, V_{CCB}$ or GND                                |           |      | $\pm 100$     | mA                 |
| Maximum junction temperature                                                        |           |      | 150           | $^{\circ}\text{C}$ |
| Storage temperature range                                                           |           | -65  | 150           | $^{\circ}\text{C}$ |

(1) Stresses above these ratings may cause permanent damage. Exposure to absolute maximum conditions for extended periods may degrade device reliability. These are stress ratings only, and functional operation of the device at these or any other conditions beyond those specified is not implied.

(2) The input and output negative-voltage ratings may be exceeded if the input and output current ratings are observed

(3) The value of  $V_{CCA}$  and  $V_{CCB}$  are provided in the recommended operating conditions table.

## ESD Ratings

| ESD    |                         | Value                                     | Unit            |   |
|--------|-------------------------|-------------------------------------------|-----------------|---|
| V(ESD) | Electrostatic Discharge | Human-Body Model (HBM) <sup>(1)</sup>     | $\pm 5\text{K}$ | V |
|        |                         | Charged-Device Model (CDM) <sup>(2)</sup> | $\pm 2\text{K}$ | V |

(1) JEDEC document JEP155 states that 500-V HBM allows safe manufacturing with a standard ESD control process.

(2) JEDEC document JEP157 states that 250-V CDM allows safe manufacturing with a standard ESD control process.

## Recommended Operating Conditions

$V_{CCI}$  is the supply voltage associated with the input port.  $V_{CCO}$  is the supply Voltage associated with the output port.

| Parameter                                                  | Conditions                    | Min                                                                                | Typ                  | Max | Unit                  |      |
|------------------------------------------------------------|-------------------------------|------------------------------------------------------------------------------------|----------------------|-----|-----------------------|------|
| Supply voltage <sup>(1)</sup>                              | $V_{CCA}$                     | 1.65                                                                               |                      | 3.6 | V                     |      |
|                                                            | $V_{CCB}$                     | 2.3                                                                                |                      | 5.5 |                       |      |
| High-level input voltage ( $V_{IH}$ )                      | A-port I/Os                   | $V_{CCA}=1.65\text{ V to }1.95\text{ V}$<br>$V_{CCB}=2.3\text{ V to }5.5\text{ V}$ | $V_{CCI}-0.2$        |     | $V_{CCI}$             | V    |
|                                                            |                               | $V_{CCA}=2.3\text{ V to }3.6\text{ V}$<br>$V_{CCB}=2.3\text{ V to }5.5\text{ V}$   | $V_{CCI}-0.4$        |     | $V_{CCI}$             |      |
|                                                            | B-port I/Os                   | $V_{CCA}=1.65\text{ V to }3.6\text{ V}$<br>$V_{CCB}=2.3\text{ V to }5.5\text{ V}$  | $V_{CCI}-0.4$        |     | $V_{CCI}$             |      |
|                                                            | OE input                      | $V_{CCA}=1.65\text{ V to }3.6\text{ V}$<br>$V_{CCB}=2.3\text{ V to }5.5\text{ V}$  | $V_{CCI} \times 0.8$ |     | 5.5                   |      |
| Low-level input voltage ( $V_{IL}$ ) <sup>(2)</sup>        | A-port I/Os                   | $V_{CCA}=1.65\text{ V to }1.95\text{ V}$<br>$V_{CCB}=2.3\text{ V to }5.5\text{ V}$ | 0                    |     | 0.15                  | V    |
|                                                            | B-port I/Os                   | $V_{CCA}=1.65\text{ V to }3.6\text{ V}$<br>$V_{CCB}=2.3\text{ V to }5.5\text{ V}$  | 0                    |     | 0.15                  |      |
| OE                                                         | OE input                      | $V_{CCA}=1.65\text{ V to }3.6\text{ V}$<br>$V_{CCB}=2.3\text{ V to }5.5\text{ V}$  | 0                    |     | $V_{CCA} \times 0.25$ | V    |
| Input transition rise or fall rate ( $\Delta t/\Delta v$ ) | A-port I/Os push-pull driving |                                                                                    |                      |     | 10                    | ns/V |
|                                                            | B-port I/Os push-pull driving |                                                                                    |                      |     | 10                    |      |
|                                                            | Control input                 |                                                                                    |                      |     | 10                    |      |
| TA Operating free- air temperature                         | -                             | -40                                                                                |                      | 85  | °C                    |      |

(1)  $V_{CCA}$  must be less than or equal to  $V_{CCB}$ .

(2) The maximum  $V_{IL}$  value is provided to ensure that a valid  $V_{OL}$  is maintained. The  $V_{OL}$  value is  $V_{IL}$  plus the voltage drop across the pass gate transistor.

## Electrical Characteristics

 over recommended operating free-air temperature range (unless otherwise noted) <sup>(1)(2)(3)</sup>

| Parameter                           |                                      | Conditions                                                           | V <sub>CCA</sub>          | V <sub>CCB</sub> | Temp  | Min                   | Typ | Max  | Unit |
|-------------------------------------|--------------------------------------|----------------------------------------------------------------------|---------------------------|------------------|-------|-----------------------|-----|------|------|
| V <sub>OHA</sub>                    | PortA Output High Voltage            | I <sub>OH</sub> =-20 μA<br>V <sub>IB</sub> ≥ V <sub>CCB</sub> - 0.4V | 1.65V to 3.6V             | 2.3V to 5.5V     | Full  | V <sub>CCA</sub> ×0.7 |     |      | V    |
| V <sub>OLA</sub>                    | PortA Output Low Voltage             | I <sub>OL</sub> =1mA<br>V <sub>IB</sub> ≤ 0.15 V                     | 1.65V to 3.6V             | 2.3V to 5.5V     | Full  |                       |     | 0.3  | V    |
| V <sub>OHB</sub>                    | Port B Output High Voltage           | I <sub>OH</sub> =-20 μA<br>V <sub>IA</sub> ≥ V <sub>CCA</sub> - 0.4V | 1.65V to 3.6V             | 2.3V to 5.5V     | Full  | V <sub>CCA</sub> ×0.7 |     |      | V    |
| V <sub>OLB</sub>                    | Port B Output Low Voltage            | I <sub>OL</sub> =1mA<br>V <sub>IA</sub> ≤ 0.15 V                     | 1.65V to 3.6V             | 2.3V to 5.5V     | Full  |                       |     | 0.3  | V    |
| I <sub>I</sub>                      | Input Leakage Current                | OE                                                                   | 1.65V to 3.6V             | 2.3V to 5.5V     | +25°C |                       |     | ±1   | μA   |
|                                     |                                      |                                                                      |                           |                  | Full  |                       |     | ±1.5 |      |
| I <sub>br</sub>                     | Partial Power Down Current           | A Ports                                                              | 0V                        | 0V to 5.5V       | +25°C |                       |     | ±0.5 | μA   |
|                                     |                                      |                                                                      |                           |                  | Full  |                       |     | ±1   |      |
|                                     |                                      | B Ports                                                              | 0V to 3.6V                | 0V               | +25°C |                       |     | ±0.5 |      |
|                                     |                                      |                                                                      |                           |                  | Full  |                       |     | ±1   |      |
| I <sub>oz</sub>                     | High-impedance State Output Current  | A or B port<br>OE=0V                                                 | 1.65V to 3.6V             | 2.3V to 5.5V     | +25°C |                       |     | ±0.5 | μA   |
|                                     |                                      |                                                                      |                           |                  | Full  |                       |     | ±1   |      |
| I <sub>CCA</sub>                    | V <sub>CCA</sub> Supply Current      | V <sub>I</sub> =V <sub>O</sub> =open<br>I <sub>b</sub> =0            | 1.65V to V <sub>CCB</sub> | 2.3v to 5.5V     | Full  |                       |     | 2.5  | μA   |
|                                     |                                      |                                                                      | 3.6v                      | 0V               | Full  |                       |     | 2.5  |      |
|                                     |                                      |                                                                      | 0v                        | 5.5V             | Full  |                       |     | -1   |      |
| I <sub>CCB</sub>                    | V <sub>CCB</sub> Supply Current      | V <sub>I</sub> =V <sub>O</sub> =open<br>I <sub>b</sub> =0            | 1.65V to V <sub>CCB</sub> | 2.3v to 5.5V     | Full  |                       |     | 10   | μA   |
|                                     |                                      |                                                                      | 3.6v                      | 0V               | Full  |                       |     | -1   |      |
|                                     |                                      |                                                                      | 0v                        | 5.5V             | Full  |                       |     | 1    |      |
| I <sub>CCA</sub> + I <sub>CCB</sub> | Combined Supply Current              | V <sub>I</sub> =V <sub>CC1</sub> or GND<br>I <sub>b</sub> =0         | 1.65V to V <sub>CCB</sub> | 2.3v to 5.5V     | Full  |                       |     | 13   | μA   |
| I <sub>CCZA</sub>                   | V <sub>CCA</sub> Supply Current      | V <sub>I</sub> =V <sub>CC1</sub> or 0V<br>I <sub>b</sub> =0, OE=0V   | 1.65V to V <sub>CCB</sub> | 2.3v to 5.5V     | Full  |                       |     | 1    | μA   |
| I <sub>CCZB</sub>                   | V <sub>CCB</sub> Supply Current      | V <sub>I</sub> =V <sub>CC1</sub> or 0V<br>I <sub>b</sub> =0, OE=0V   | 2.3v to 3.6V              | 2.3v to 5.5V     | Full  |                       |     | 1    | μA   |
| C <sub>I</sub>                      | Input Capacitance                    | OE                                                                   | 3.3V                      | 3.3V             | +25°C |                       | 2.5 |      | PF   |
| C <sub>io</sub>                     | Input-to-output Internal Capacitance | A Port                                                               | 3.3V                      | 3.3V             | +25°C |                       | 5   |      | PF   |
|                                     |                                      | B Port                                                               | 3.3V                      | 3.3V             | +25°C |                       | 5   |      |      |

 (1) V<sub>CC1</sub> is the VCC associated with the input port.

 (2) V<sub>CC0</sub> is the VCC associated with the output port

 (3) V<sub>CCA</sub> must be less than or equal to V<sub>CCB</sub>.

## Timing Requirements

 **$V_{CCA}=1.8V\pm 0.15V$** 

|                    |                                  | $V_{CCB}=2.5V\pm 0.2V$ | $V_{CCB}=3.3V\pm 0.2V$ | $V_{CCB}=5V\pm 0.2V$ | Unit |
|--------------------|----------------------------------|------------------------|------------------------|----------------------|------|
|                    |                                  | Typ                    | Typ                    | Typ                  |      |
| Data Rate          | Push-pull Driving                | 21                     | 22                     | 24                   | Mbps |
|                    | Open-drain Driving               | 2                      | 2                      | 2                    |      |
| Pulse Duration(tw) | Push-pull Driving (Data Inputs)  | 47                     | 45                     | 41                   | ns   |
|                    | Open-drain Driving (Data Inputs) | 500                    | 500                    | 500                  |      |

 **$V_{CCA}=2.5V\pm 0.15V$** 

|                    |                                  | $V_{CCB}=2.5V\pm 0.2V$ | $V_{CCB}=3.3V\pm 0.2V$ | $V_{CCB}=5V\pm 0.2V$ | Unit |
|--------------------|----------------------------------|------------------------|------------------------|----------------------|------|
|                    |                                  | Typ                    | Typ                    | Typ                  |      |
| Data Rate          | Push-pull Driving                | 20                     | 22                     | 24                   | Mbps |
|                    | Open-drain Driving               | 2                      | 2                      | 2                    |      |
| Pulse Duration(tw) | Push-pull Driving (Data Inputs)  | 50                     | 45                     | 41                   | ns   |
|                    | Open-drain Driving (Data Inputs) | 500                    | 500                    | 500                  |      |

 **$V_{CCA}=3.3V\pm 0.15V$** 

|                    |                                  | $V_{CCB}=3.3V\pm 0.2V$ | $V_{CCB}=5V\pm 0.2V$ | Unit |
|--------------------|----------------------------------|------------------------|----------------------|------|
|                    |                                  | Typ                    | Typ                  |      |
| Data Rate          | Push-pull Driving                | 23                     | 24                   | Mbps |
|                    | Open-drain Driving               | 2                      | 2                    |      |
| Pulse Duration(tw) | Push-pull Driving (Data Inputs)  | 43                     | 41                   | ns   |
|                    | Open-drain Driving (Data Inputs) | 500                    | 500                  |      |

## Switching Characteristics: $V_{CC}=1.8V\pm 0.15V$

over recommended operating free-air temperature range (unless otherwise noted)

| Parameter         |                                           | Conditions              |                    | $V_{CCB}=2.5V\pm 0.2V$ | $V_{CCB}=3.3V\pm 0.2V$ | $V_{CCB}=5V\pm 0.2V$ | Units |
|-------------------|-------------------------------------------|-------------------------|--------------------|------------------------|------------------------|----------------------|-------|
|                   |                                           |                         |                    | Typ                    | Typ                    | Typ                  |       |
| $t_{PHL}$         | Propagation Delay Time High-to-low Output | A to B                  | Push-pull Driving  | 5.6                    | 5                      | 5                    | ns    |
|                   |                                           |                         | Open-drain Driving | 7.5                    | 7.9                    | 8.3                  |       |
| $t_{PLH}$         | Propagation Delay Time low-to-high Output | A to B                  | Push-pull Driving  | 10.0                   | 9.5                    | 9                    | ns    |
|                   |                                           |                         | Open-drain Driving | 181                    | 170                    | 154                  |       |
| $t_{PHL}$         | Propagation Delay Time High-to-low Output | B to A                  | Push-pull Driving  | 7                      | 7.1                    | 7.2                  | ns    |
|                   |                                           |                         | Open-drain Driving | 7.6                    | 8.1                    | 9.2                  |       |
| $t_{PLH}$         | Propagation Delay Time low-to-high Output | B to A                  | Push-pull Driving  | 7.6                    | 6.9                    | 6                    | ns    |
|                   |                                           |                         | Open-drain Driving | 163                    | 145                    | 118                  |       |
| $t_{en}$          | Enable Time                               | OE to A or B            |                    | 135                    | 159                    | 182                  | ns    |
| $t_{dis}$         | Disable Time                              | OE to A or B            |                    | 170                    | 174                    | 181                  | ns    |
| $t_{rA}$          | Input Rise Time                           | A port rise time        | Push-pull Driving  | 13.4                   | 11.9                   | 10.6                 | ns    |
|                   |                                           |                         | Open-drain Driving | 68                     | 66                     | 62                   |       |
| $t_{rB}$          | Input Rise Time                           | B port rise time        | Push-pull Driving  | 13                     | 12                     | 11.6                 | ns    |
|                   |                                           |                         | Open-drain Driving | 66                     | 65                     | 50                   |       |
| $t_{fA}$          | Input Fall Time                           | A port fall time        | Push-pull Driving  | 5.6                    | 4.7                    | 4.0                  | ns    |
|                   |                                           |                         | Open-drain Driving | 5.0                    | 5.1                    | 5.2                  |       |
| $t_{fB}$          | Input Fall Time                           | B port fall time        | Push-pull Driving  | 3.0                    | 3.0                    | 2.9                  | ns    |
|                   |                                           |                         | Open-drain Driving | 6.1                    | 5.6                    | 4.4                  |       |
| $t_{sk(O)}$       | Skew(time), Output                        | Channel-to-Channel Skew |                    | 0.5                    | 0.5                    | 0.5                  | ns    |
| Maximum Data Rate |                                           | Push-pull Driving       |                    | 22                     | 23                     | 24                   | Mbps  |
|                   |                                           | Open-drain Driving      |                    | 2                      | 2                      | 2                    |       |

**Switching Characteristics: Vcc=2.5V±0.15V**

over operating free-air temperature range (unless otherwise noted)

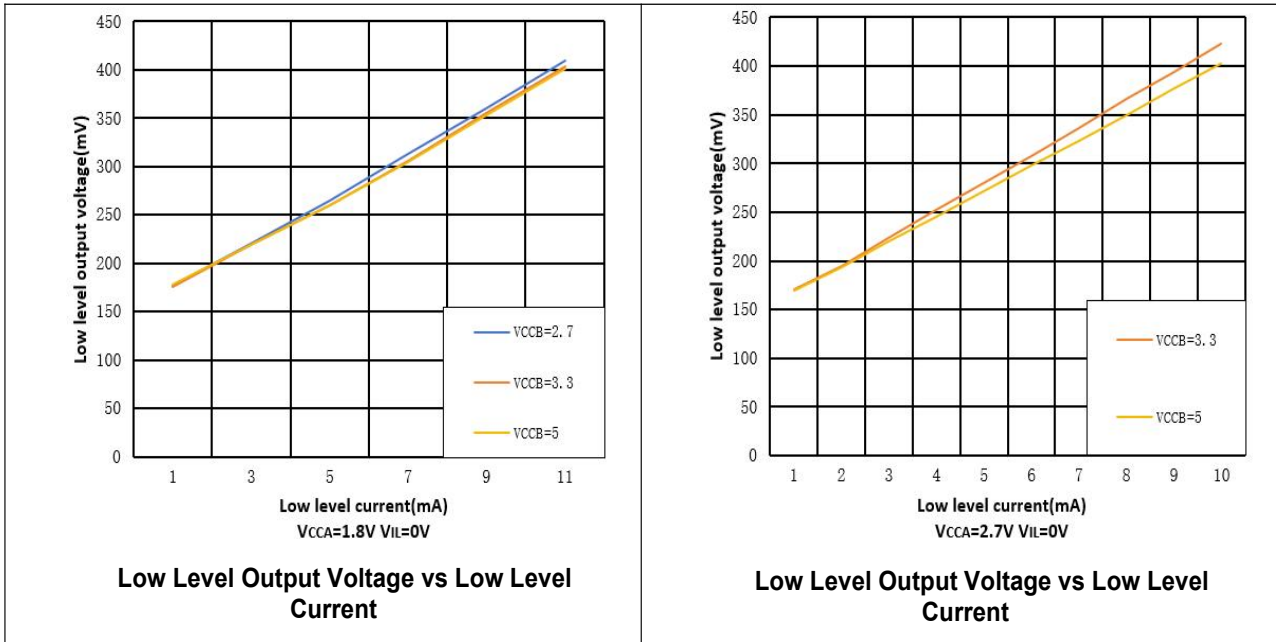
| Parameter          |                                           | Conditions              |                    | V <sub>ccB</sub> =2.5V±0.2V | V <sub>ccB</sub> =3.3V±0.2V | V <sub>ccB</sub> =5V±0.2V | Units |
|--------------------|-------------------------------------------|-------------------------|--------------------|-----------------------------|-----------------------------|---------------------------|-------|
|                    |                                           |                         |                    | Typ                         | Typ                         | Typ                       |       |
| t <sub>PHL</sub>   | Propagation Delay Time High-to-low Output | A to B                  | Push-pull Driving  | 3.5                         | 3.5                         | 3.2                       | ns    |
|                    |                                           |                         | Open-drain Driving | 6.3                         | 6.5                         | 6.7                       |       |
| t <sub>PLH</sub>   | Propagation Delay Time low-to-high Output | A to B                  | Push-pull Driving  | 4.5                         | 4.9                         | 4.7                       | ns    |
|                    |                                           |                         | Open-drain Driving | 158                         | 152                         | 142                       |       |
| t <sub>PHL</sub>   | Propagation Delay Time High-to-low Output | B to A                  | Push-pull Driving  | 3.7                         | 3.9                         | 4.6                       | ns    |
|                    |                                           |                         | Open-drain Driving | 6                           | 6.6                         | 7.7                       |       |
| t <sub>PLH</sub>   | Propagation Delay Time low-to-high Output | B to A                  | Push-pull Driving  | 4.8                         | 4                           | 2.5                       | ns    |
|                    |                                           |                         | Open-drain Driving | 153                         | 138                         | 116                       |       |
| t <sub>en</sub>    | Enable Time                               | OE to A or B            |                    | 7.7                         | 41.8                        | 130                       | ns    |
| t <sub>dis</sub>   | Disable Time                              | OE to A or B            |                    | 175                         | 181                         | 182                       | ns    |
| t <sub>rA</sub>    | Input Rise Time                           | A port Rise Time        | Push-pull Driving  | 9.8                         | 8.6                         | 7.5                       | ns    |
|                    |                                           |                         | Open-drain Driving | 79                          | 77                          | 65                        |       |
| t <sub>rB</sub>    | Input Rise Time                           | B port Rise Time        | Push-pull Driving  | 9.8                         | 8.7                         | 8.1                       | ns    |
|                    |                                           |                         | Open-drain Driving | 93                          | 68                          | 53                        |       |
| t <sub>fA</sub>    | Input Fall Time                           | A port Fall Time        | Push-pull Driving  | 4.6                         | 4.1                         | 3.6                       | ns    |
|                    |                                           |                         | Open-drain Driving | 5.1                         | 5.1                         | 5.2                       |       |
| t <sub>fB</sub>    | Input Fall Time                           | B port Fall Time        | Push-pull Driving  | 4.5                         | 4.0                         | 4.0                       | ns    |
|                    |                                           |                         | Open-drain Driving | 6.9                         | 7.4                         | 7.8                       |       |
| t <sub>SK(O)</sub> | Skew(time), Output                        | Channel-to-Channel Skew |                    | 0.5                         | 0.5                         | 0.5                       | ns    |
| Maximum Data Rate  |                                           | Push-pull Driving       |                    | 22                          | 24                          | 24                        | Mbps  |
|                    |                                           | Open-drain Driving      |                    | 2                           | 2                           | 2                         |       |

**Switching Characteristics:V<sub>cc</sub>=3.3V±0.15V**

over recommended operating free-air temperature range (unless otherwise noted)

| Parameter          |                                           | Conditions              |                    | V <sub>ccB</sub> =3.3V±0.2V | V <sub>ccB</sub> =5V±0.2V | Units |
|--------------------|-------------------------------------------|-------------------------|--------------------|-----------------------------|---------------------------|-------|
|                    |                                           |                         |                    | TYP                         | TYP                       |       |
| t <sub>PHL</sub>   | Propagation Delay Time High-to-low Output | A to B                  | Push-pull Driving  | 2.1                         | 2.2                       | ns    |
|                    |                                           |                         | Open-drain Driving | 5.9                         | 6.1                       |       |
| t <sub>PLH</sub>   | Propagation Delay Time High-to-low Output | A to B                  | Push-pull Driving  | 1                           | 3.3                       | ns    |
|                    |                                           |                         | Open-drain Driving | 138                         | 131                       |       |
| t <sub>PHL</sub>   | Propagation Delay Time High-to-low Output | B to A                  | Push-pull Driving  | 2.3                         | 2.6                       | ns    |
|                    |                                           |                         | Open-drain Driving | 5.4                         | 6.6                       |       |
| t <sub>PLH</sub>   | Propagation delay time low-to-high Output | B to A                  | Push-pull Driving  | 1.0                         | 1.0                       | ns    |
|                    |                                           |                         | Open-drain Driving | 133                         | 115                       |       |
| t <sub>en</sub>    | Enable Time                               | OE to A or B            |                    | 4.7                         | 5.2                       | ns    |
| t <sub>dis</sub>   | Disable Time                              | OE to A or B            |                    | 174                         | 182                       | ns    |
| t <sub>rA</sub>    | Input Rise Time                           | A port Rise Time        | Push-pull Driving  | 7.4                         | 6.6                       | ns    |
|                    |                                           |                         | Open-drain Driving | 75                          | 67                        |       |
| t <sub>rB</sub>    | Input Rise Time                           | B port Rise Time        | Push-pull Driving  | 7.7                         | 7.1                       | ns    |
|                    |                                           |                         | Open-drain Driving | 70                          | 65                        |       |
| t <sub>fA</sub>    | Input Fall Time                           | Aport Fall Time         | Push-pull Driving  | 3.4                         | 3.0                       | ns    |
|                    |                                           |                         | Open-drain Driving | 5.1                         | 5.1                       |       |
| t <sub>fB</sub>    | Input Fall Time                           | Bport Fall Time         | Push-pull Driving  | 3.5                         | 3.2                       | ns    |
|                    |                                           |                         | Open-drain Driving | 6.8                         | 6.7                       |       |
| t <sub>sk(O)</sub> | Skew(time), Output                        | Channel-to-Channel Skew |                    | 0.5                         | 0.5                       | ns    |
| Maximum Data Rate  |                                           | Push-pull Driving       |                    | 24                          | 24                        | Mbps  |
|                    |                                           | Open-drain Driving      |                    | 2                           | 2                         |       |

## Typical Characteristics

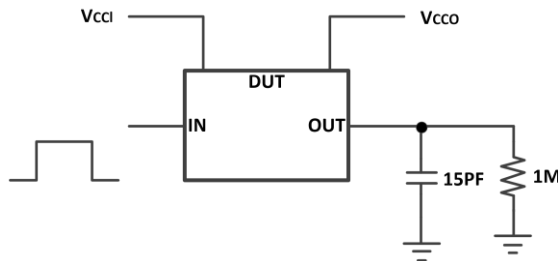


## Parameter Measurement Information

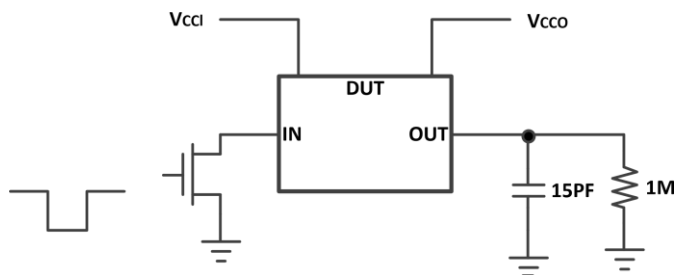
Unless otherwise noted, all input pulsed are supplied by generators having the following characteristics:

- PSRR 10MHz
- $Z_o=50 \Omega$
- $dv/dt \geq 1V/ns$

Note: All input pulses are measured one at a time with one transition per measurement

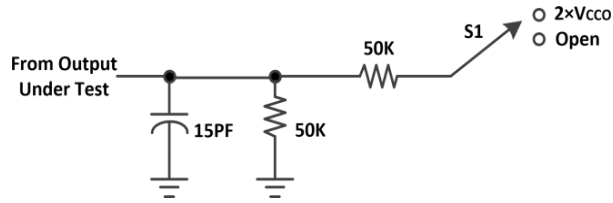


**Data Rate, Pulse Duration, Propagation Delay, Output Rise and Fall Time Measurement Using a Push-Pull Driver**



**Data Rate, Pulse Duration, Propagation Delay, Output Rise and Fall Time Measurement Using an Open-Drain Driver**

**Parameter Measurement Information (Continued)**



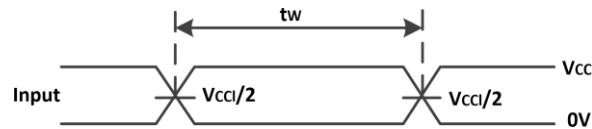
**Load Circuit for Enable/Disable Time Measurement**

**Switch Configuration for Enable/Disable Timing**

| Test                               | S1                 |
|------------------------------------|--------------------|
| $t_{PZL}^{(1)}$ , $t_{PLZ}^{(2)}$  | $2 \times V_{CC0}$ |
| $t_{PHZL}^{(1)}$ , $t_{PZH}^{(2)}$ | Open               |

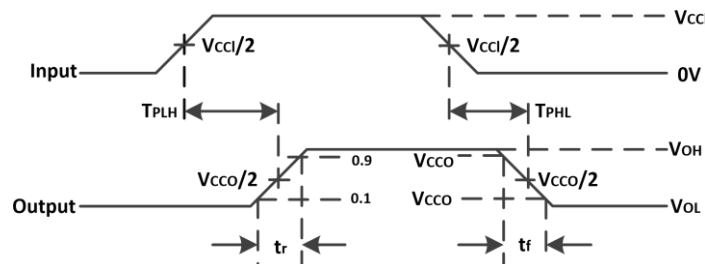
(1)  $t_{PZL}$  and  $t_{PZH}$  are the same as  $t_{en}$ .

(2)  $t_{PLZ}$  and  $t_{PHZ}$  are the same as  $t_{dis}$ .

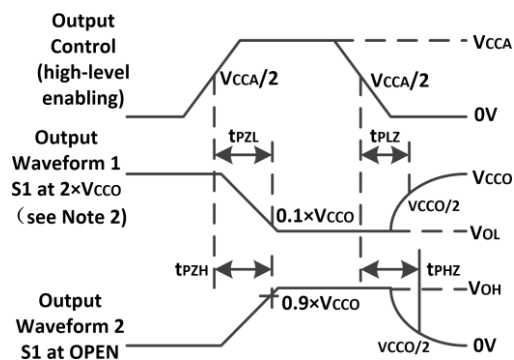


(1) All input pulses are measured one at a time, with one transition per measurement.

**Voltage Waveforms Pulse Duration**



**Voltage Waveforms Propagation Delay Times**



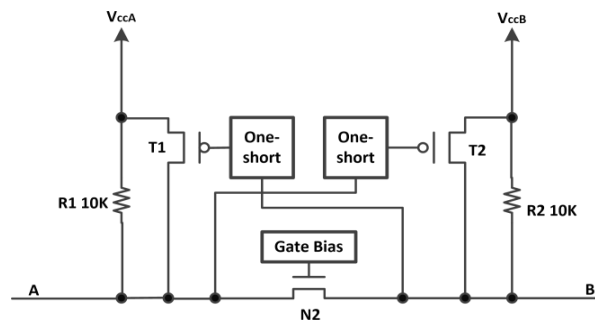
**Voltage Waveforms Enable and Disable**

**Overview**

NXS0101G is a one-bit Bi-direction voltage-level translator specifically designed for translating logic voltage levels. The A port can accept I/O voltages that cover from 1.65 V to 3.6 V range; The B port can accept I/O voltages from 2.3 V to 5.5 V. The device is a pass-gate architecture with edge-rate accelerators (one-shots) to improve the overall data rate. 10-kΩ pullup resistors that usually used in open-drain applications have been integrated inside IC with the advantage saving an external resistor. Not only the IC is designed for open-drain applications, but also this device can translate push-pull CMOS logic outputs.

**Architecture**

The NXS0101G architecture (see Figure below) is a translator with Bi-direction-Sensing function that means a direction-control mechanism to control the direction of data flow from A to B or from B to A is not needed. These two bidirectional channels independently determine the direction of data flow without a direction-control signal. This auto-direction feature is realized by each I/O pin can be automatically reconfigured as either an input or an output.



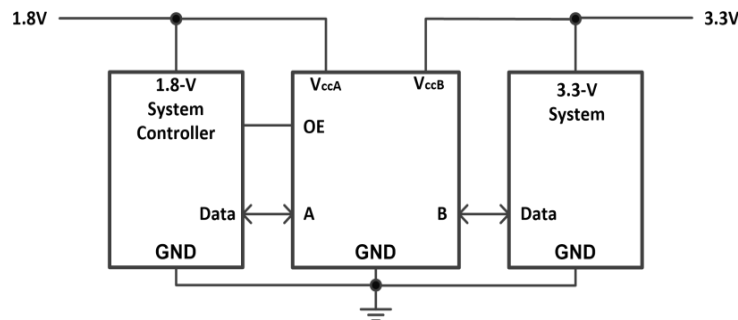
**Architecture of NXS0101G**

NXS0101G employs two key circuits to enable this voltage translation.

1. An N-Channel pass-gate transistor topology that ties A-port to B-port.
2. Output one-shot edge-rate accelerate circuitry to detect and accelerate rising edges on the A or B ports.

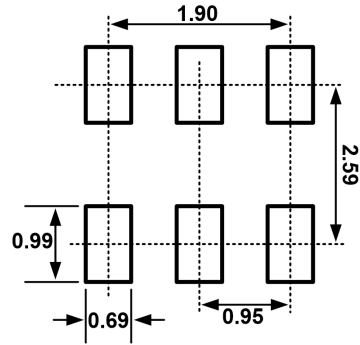
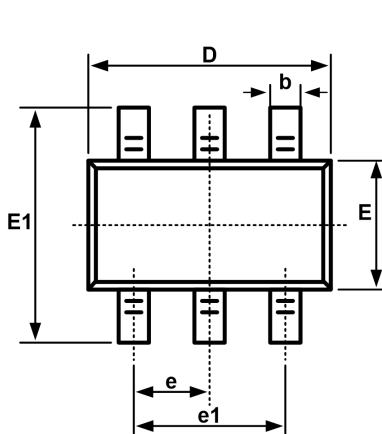
**Application Information**

NXS0101G can be used in level-translation applications in interfacing devices or systems operating at different interface voltages with on another. The NXS0101G is ideal for use in applications where an open-drain driver is connected to the data I/Os.

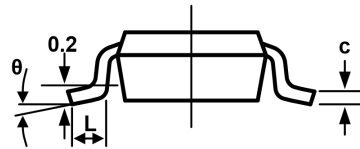
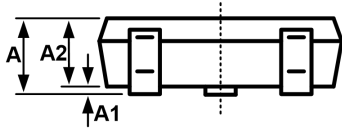


**Typical Application Schematic**

**Package Outline**  
**SOT23-6**

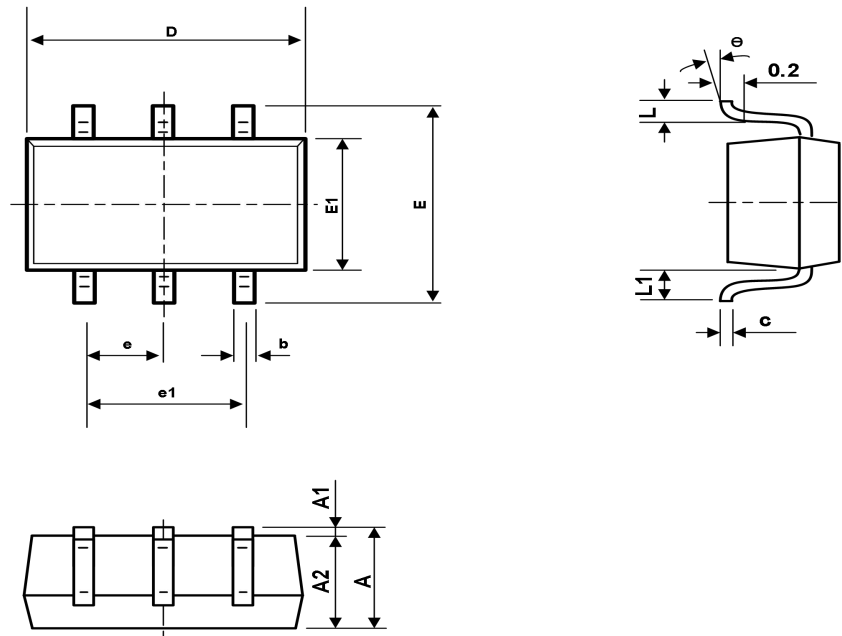


Recommended Land Pattern (Unit: mm)



| Symbol   | Dimensions In Millimeters |       | Dimensions In Inches |       |
|----------|---------------------------|-------|----------------------|-------|
|          | Min                       | Max   | Min                  | Max   |
| A        | 1.050                     | 1.250 | 0.041                | 0.049 |
| A1       | 0.000                     | 0.100 | 0.000                | 0.004 |
| A2       | 1.050                     | 1.150 | 0.041                | 0.045 |
| b        | 0.300                     | 0.500 | 0.012                | 0.020 |
| c        | 0.100                     | 0.200 | 0.004                | 0.008 |
| D        | 2.820                     | 3.020 | 0.111                | 0.119 |
| E        | 1.500                     | 1.700 | 0.059                | 0.067 |
| E1       | 2.650                     | 2.950 | 0.104                | 0.116 |
| e        | 0.950BSC                  |       | 0.037BSC             |       |
| e1       | 1.800                     | 2.000 | 0.071                | 0.079 |
| L        | 0.300                     | 0.600 | 0.012                | 0.024 |
| L1       | 0.600REF                  |       | 0.024REF             |       |
| $\theta$ | 0°                        | 8°    | 0°                   | 8°    |

**Package Outline**  
SC70-6



| Symbol | Dimension In Millimeters |              | Dimensions In Inches |              |
|--------|--------------------------|--------------|----------------------|--------------|
|        | Min                      | Max          | Min                  | Max          |
| A      | 0.                       | 1.           | 0.                   | 0.           |
| A1     | 9000.                    | 1000.        | 0350.                | 0430.        |
| A2     | 0000.                    | 1001.        | 0000.                | 0040.        |
| b      | 9000.                    | 0000.        | 0350.                | 0390.        |
| c      | 1500.                    | 3500.        | 0060.                | 0140.        |
| D      | 1102.                    | 1752.        | 0040.                | 0070.        |
| E      | 0002.                    | 2002.        | 0790.                | 0870.        |
| E1     | 1501.                    | 4501.        | 0850.                | 0960.        |
| e      | 0.650TYP                 |              | 0.026TYP             |              |
| e1     | 1501.                    | 3501.        | 0450.                | 0530.        |
| L      | 2000.                    | 4000.        | 0470.                | 0550.        |
| L1     | 260                      | 0.525REF 460 | 010                  | 0.021REF 018 |
| e      | 0°                       | 8°           | 0°                   | 8°           |

## Attention

- Any and all MSKSEMI Semiconductor products described or contained herein do not have specifications that can handle applications that require extremely high levels of reliability, such as life-support systems, aircraft's control systems, or other applications whose failure can be reasonably expected to result in serious physical and/or material damage. Consult with your MSKSEMI Semiconductor representative nearest you before using any MSKSEMI Semiconductor products described or contained herein in such applications.
- MSKSEMI Semiconductor assumes no responsibility for equipment failures that result from using products at values that exceed, even momentarily, rated values (such as maximum ratings, operating condition ranges, or other parameters) listed in products specifications of any and all MSKSEMI Semiconductor products described or contained herein.
- Specifications of any and all MSKSEMI Semiconductor products described or contained herein stipulate the performance, characteristics, and functions of the described products in the independent state, and are not guarantees of the performance, characteristics, and functions of the described products as mounted in the customer's products or equipment. To verify symptoms and states that cannot be evaluated in an independent device, the customer should always evaluate and test devices mounted in the customer's products or equipment.
- MSKSEMI Semiconductor strives to supply high-quality high-reliability products. However, any and all semiconductor products fail with some probability. It is possible that these probabilistic failures could give rise to accidents or events that could endanger human lives, that could give rise to smoke or fire, or that could cause damage to other property. When designing equipment, adopt safety measures so that these kinds of accidents or events cannot occur. Such measures include but are not limited to protective circuits and error prevention circuits for safe design, redundant design, and structural design.
- In the event that any or all MSKSEMI Semiconductor products (including technical data, services) described or contained herein are controlled under any of applicable local export control laws and regulations, such products must not be exported without obtaining the export license from the authorities concerned in accordance with the above law.
- No part of this publication may be reproduced or transmitted in any form or by any means, electronic or mechanical, including photocopying and recording, or any information storage or retrieval system, or otherwise, without the prior written permission of MSKSEMI Semiconductor.
- Information (including circuit diagrams and circuit parameters) herein is for example only ; it is not guaranteed for volume production. MSKSEMI Semiconductor believes information herein is accurate and reliable, but no guarantees are made or implied regarding its use or any infringements of intellectual property rights or other rights of third parties.
- Any and all information described or contained herein are subject to change without notice due to product/technology improvement, etc. When designing equipment, refer to the "Delivery Specification" for the MSKSEMI Semiconductor product that you intend to use.