

## 1.Description

The LM2575 /LM2575HV series of regulators are monolithic integrated circuits that provide all the active functions for a step-down (buck) switching regulator, capable of driving a 2A load with excellent line and load regulation. These devices are available in fixed output voltages of 3.3V, 5V, 12V, and an adjustable output version.

Requiring a minimum number of external components, these regulators are simple to use and include internal frequency compensation, and a fixed-frequency oscillator.

The LM2575 /LM2575HV series operates at a switching frequency of 52 kHz thus allowing smaller sized filter components than what would be needed with lower frequency switching regulators. Available in a standard 5-lead TO-220 package with several different lead bend options, and a 5-lead TO-262 surface mount package.

## 2.Features

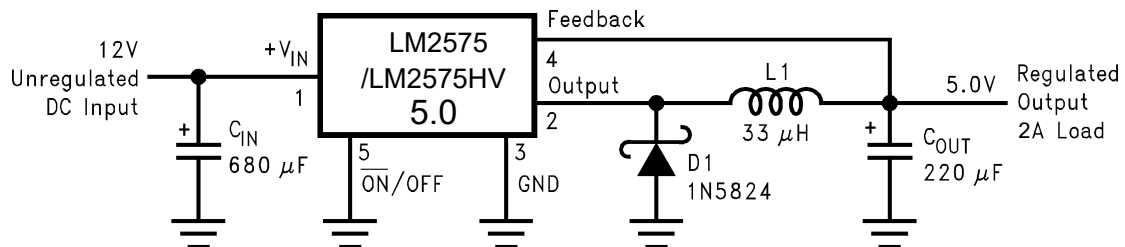
- 3.3V, 5V, 12V, and adjustable output versions
- Adjustable version output voltage range, 1.2V to 37V
- (57V for HV version)  $\pm 4\%$  max over line and load conditions
- Available in TO-220 and TO-263, TO-220B packages
- Guaranteed 2A output load current
- Input voltage range up to 40V, up to 60V for HV Version
- Requires only 4 external components
- Excellent line and load regulation specifications
- 52 kHz fixed frequency internal oscillator
- TTL shutdown capability
- Low power standby mode, IQ typically 50 $\mu$ A
- High efficiency
- Uses readily available standard inductors
- Thermal shutdown and current limit protection

## 3.Applications

- Simple high-efficiency step-down (buck) regulator
- On-card switching regulators
- Positive to negative converter
- Note: tPatent Number 5,382,918.



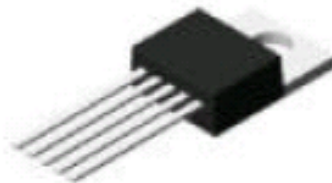
#### 4. Typical Application (Fixed Output Voltage Versions)



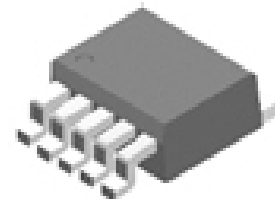
#### 5. Package Types



TO-220B



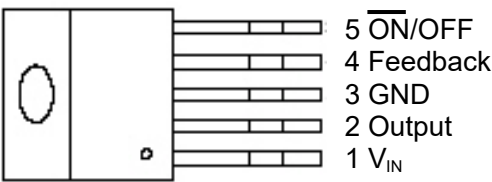
TO-220



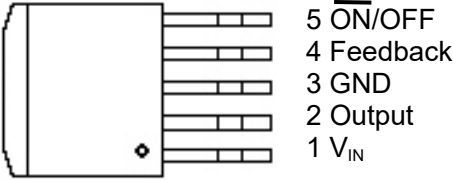
TO-263



6.Pinning information



TO-220B/TO-220



TO-263

Pin Descriptions

Name	Description
V <sub>IN</sub>	Input supply voltage
Output	Switching output
GND	Ground
Feedback	Output voltage feedback
ON/OFF	ON/OFF shutdown Active is “Low” or floating

7.Ordering information

Temperature Range	Output Voltage, V				Package Type
	3.3	5.0	12	ADJ	
-40°C≤T <sub>A</sub> ≤125°C	LM2575HVS-3.3	LM2575HVS-5.0	LM2575HVS-12	LM2575HVS-ADJ	TO-263
	LM2575S-3.3	LM2575S-5.0	LM2575S-12	LM2575S-ADJ	
	LM2575HVT-3.3	LM2575HVT-5.0	LM2575HVT-12	LM2575HVT-ADJ	TO-220
	LM2575T-3.3	LM2575T-5.0	LM2575T-12	LM2575T-ADJ	



## 8. Absolute Maximum Ratings (Note 1)

Parameter	Rating
Maximum Supply Voltage	
LM2575	45V
LM2575HV	63V
ON /OFF Pin Input Voltage	$-0.3 \leq V \leq +V_{IN}$
Output Voltage to Ground (Steady State)	-1V
Power Dissipation	Internally limited
Storage Temperature Range	-65°C to +150°C
ESD Susceptibility HumanBodyModel	2kV
Vapor Phase (60 sec.)	+215°C
Infrared (10 sec.)	+245°C
T Package (Soldering, 10 sec.)	+260°C
Maximum Junction Temperature	+150°C

## 9. Operating Conditions

Parameter	Rating
Temperature Range	$-40^{\circ}\text{C} \leq T_J \leq +125^{\circ}\text{C}$
Supply Voltage	
LM2575	40V
LM2575HV	60V



## 10.1 Electrical Characteristics

Specifications with standard type face are for  $T_J=25^{\circ}\text{C}$ , and those with boldface type apply over full Operating Temperature Range

Parameter	Symbol	Conditions	Typ	Limit	Units
<b>System Parameters (Note 5) Test Circuit Figure 1 (LM2575- 3.3, LM2575HV-3.3)</b>					
Output Voltage	$V_{OUT}$	$4.75\text{V} \leq V_{IN} \leq 40\text{V}, 60\text{V(HV)}$ $0.2\text{A} \leq I_{LOAD} \leq 2\text{A}$	3.3		V
				3.168/3.135	V(min)
				3.432/3.465	V(max)
Efficiency	$\eta$	$V_{IN}=12\text{V}, I_{LOAD}=2\text{A}$	73		%
<b>System Parameters (Note 5) Test Circuit Figure 1 (LM2575-5.0, LM2575HV-5.0)</b>					
Output Voltage	$V_{OUT}$	$7\text{V} \leq V_{IN} \leq 40\text{V}, 60\text{V(HV)}$ $0.2\text{A} \leq I_{LOAD} \leq 2\text{A}$	5		V
				4.800/4.750	V(min)
				5.200/5.250	V(max)
Efficiency	$\eta$	$V_{IN}=12\text{V}, I_{LOAD}=2\text{A}$	80		%
<b>System Parameters (Note 5) Test Circuit Figure 1 (LM2575-12, LM2575HV-12)</b>					
Output Voltage	$V_{OUT}$	$15\text{V} \leq V_{IN} \leq 40\text{V}, 60\text{V(HV)}$ $0.2\text{A} \leq I_{LOAD} \leq 2\text{A}$	12		V
				11.52/11.40	V(min)
				12.48/12.60	V(max)
Efficiency	$\eta$	$V_{IN}=25\text{V}, I_{LOAD}=2\text{A}$	90		%
<b>System Parameters (Note 5) Test Circuit Figure 1 (LM2575-ADJ, LM2575HV-ADJ)</b>					
Feedback Voltage	$V_{FB}$	$4.5\text{V} \leq V_{IN} \leq 40\text{V}, 57\text{V(HV)}$ $0.2\text{A} \leq I_{LOAD} \leq 2\text{A}, V_{OUT}$ programm- ed for 3V. Circuit of Figure 1.	1.23		V
				1.193/1.180	V(min)
				1.267/1.280	V(max)
Efficiency	$\eta$	$V_{IN}=12\text{V}, V_{OUT}=3\text{V}, I_{LOAD}=2\text{A}$	73		%



## 10.2 Electrical Characteristics (All Output Voltage Versions)

Specifications with standard type face are for  $T_J=25^{\circ}\text{C}$ , and those with boldface type apply over full Operating Temperature Range, Unless otherwise specified,  $V_{\text{IN}}=12\text{V}$  for the 3.3V, 5V, and Adjustable version and  $V_{\text{IN}}=24\text{V}$  for the 12V version.  $I_{\text{LOAD}}=500\text{mA}$

Parameter	Symbol	Conditions	Typ	Limit	Units
<b>Device Parameters</b>					
Feedback Bias Current	$I_B$	Adjustable Version Only $V_{\text{FB}}=1.3\text{V}$	10		nA
				50/100	nA(max)
Oscillator Frequency	$f_o$	(Note 6)	52		kHz
				47/42	kHz(min)
				58/63	kHz(max)
Saturation Voltage	$V_{\text{SAT}}$	$I_{\text{OUT}}=2\text{A}$ (Notes 7, 8)	1.16		V
				1.4/1.5	V(max)
Max Duty Cycle (ON)	DC	(Note 8)	98		%
Min Duty Cycle (OFF)		(Note 9)	0	93	%(min)
Current Limit	$I_{\text{CL}}$	Peak Current (Notes 7, 8)	2.2		A
				1.7/1.3	A(min)
				3/3.2	A(max)
Output Leakage Current	$I_L$	Output=0V (Notes 7, 9)		2	mA(max)
		Output=-1V (Note 10)	7.5		mA
				30	mA(max)
Quiescent Current	$I_Q$	(Note 9)	5		mA
				10	mA(max)
Standby Quiescent Current	$I_{\text{STBY}}$	ON/OFF pin=5V (OFF)	50		$\mu\text{A}$
		(Note 10)		200	$\mu\text{A}(\text{max})$



Parameter	Symbol	Conditions	Typ	Limit	Units
Thermal Resistance	$\theta_{JC}$	TO-220 or TO-263 Package Junction to Case	2		$^{\circ}\text{C/W}$
	$\theta_{JA}$	TO-220 Package, Junction to Ambient (Note 11)	50		$^{\circ}\text{C/W}$
	$\theta_{JA}$	TO-263 Package, Junction to Ambient (Note 12)	50		$^{\circ}\text{C/W}$
	$\theta_{JA}$	TO-263 Package, Junction to Ambient (Note 13)	30		$^{\circ}\text{C/W}$
	$\theta_{JA}$	TO-263 Package, Junction to Ambient (Note 14)	20		$^{\circ}\text{C/W}$
<b>ON/OFF CONTROL Test Circuit Figure 1</b>					
ON/OFF Pin Logic Input	$V_{IH}$	Low (Regulator ON)	1.4	2.2/2.4	V(min)
Threshold Voltage	$V_{IL}$	High (Regulator OFF)	1.2	1/0.8	V(max)
ON/OFF Pin Input Current	$I_H$	$V_{\text{LOGIC}}=2.5\text{V}$ (Regulator OFF)	12		$\mu\text{A}$
				30	$\mu\text{A(max)}$
	$I_L$	$V_{\text{LOGIC}}=0.5\text{V}$ (Regulator ON)	0		$\mu\text{A}$
				10	$\mu\text{A(max)}$

Note 1: Absolute Maximum Ratings indicate limits beyond which damage to the device may occur. Operating Ratings indicate conditions for which the device is intended to be functional, but do not guarantee specific performance limits. For guaranteed specifications and test conditions, see the Electrical Characteristics.

Note 2: The human body model is a 100 pF capacitor discharged through a 1.5k resistor into each pin.

Note 3: Typical numbers are at 25 $^{\circ}\text{C}$  and represent the most likely norm.

Note 4: All limits guaranteed at room temperature (standard type face) and at temperature extremes (bold type face). All room temperature limits are 100% production tested. All limits at temperature extremes are guaranteed via correlation using standard Statistical Quality Control (SQC) methods. All limits are used to calculate Average Outgoing Quality Level (AOQL).

Note 5: External components such as the catch diode, inductor, input and output capacitors, and voltage programming resistors can affect switching regulator system performance. When the LM2575 is used as shown in the Figure 1 test circuit, system performance will be as shown in system parameters section of Electrical Characteristics.



Note 6: The switching frequency is reduced when the second stage current limit is activated. The amount of reduction is determined by the severity of current over-load.

Note 7: No diode, inductor or capacitor connected to output pin.

Note 8: Feedback pin removed from output and connected to 0V to force the output transistor switch ON.

Note 9: Feedback pin removed from output and connected to 12V for the 3.3V, 5V, and the ADJ. version, and 15V for the 12V version, to force the output transistor switch OFF.

Note 10:  $V_{IN}=40V$ .

Note 11: Junction to ambient thermal resistance (no external heat sink) for the TO-220 package mounted vertically, with the leads soldered to a printed circuit board with (1 oz.) copper area of approximately 1 in<sup>2</sup>.

Note 12: Junction to ambient thermal resistance with the TO-263 package tab soldered to a single printed circuit board with 0.5 in<sup>2</sup> of (1 oz.) copper area.

Note 13: Junction to ambient thermal resistance with the TO-263 package tab soldered to a single sided printed circuit board with 2.5 in<sup>2</sup> of (1 oz.) copper area.

Note 14: Junction to ambient thermal resistance with the TO-263 package tab soldered to a double sided printed circuit board with 3 in<sup>2</sup> of (1 oz.) copper area on the LM2575 side of the board, and approximately 16 in<sup>2</sup> of copper on the other side of the p-c board. See Application Information in this data sheet and the thermal model in Switchers Made Simple™ version 4.3 software.





## 11.1 Typical Characteristic (Circuit of Figure 1)

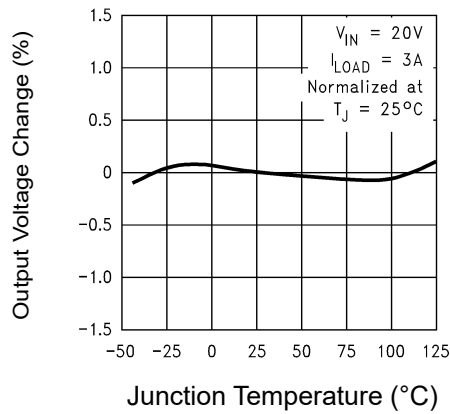


Figure 1: Normalized Output Voltage

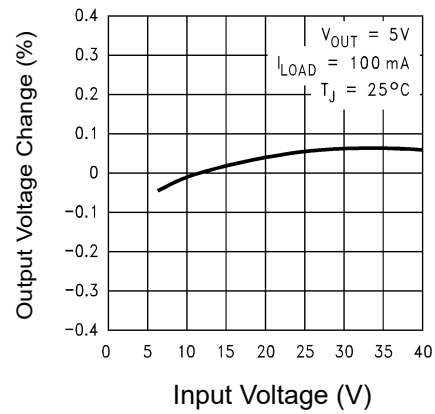


Figure 2: Line Regulation

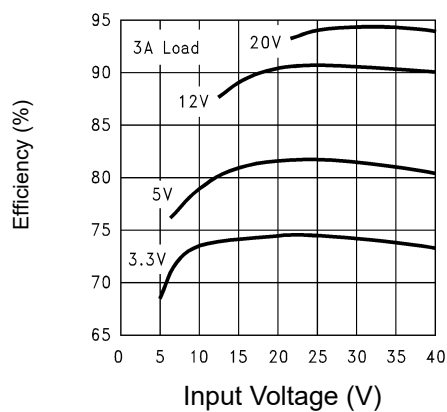


Figure 3: Efficiency

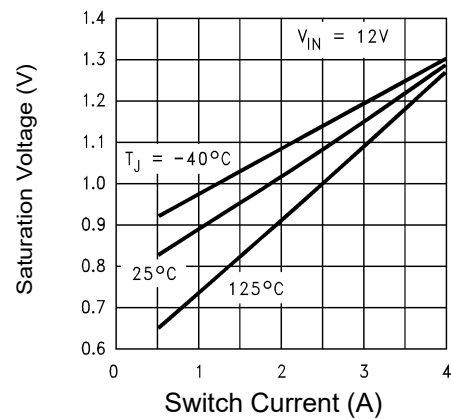


Figure 4: Switch Saturation Voltage

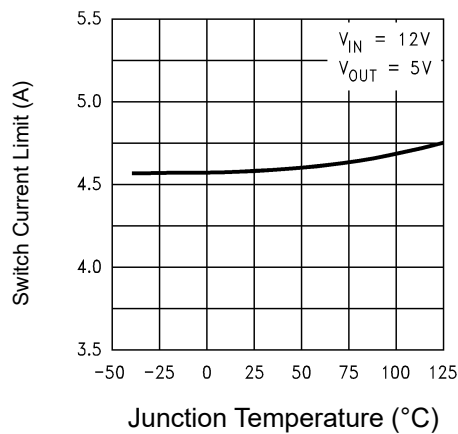


Figure 5: Switch Current Limit

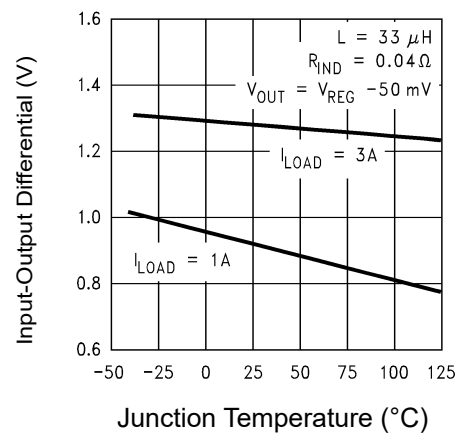


Figure 6: Dropout Voltage



## 11.2 Typical Characteristic

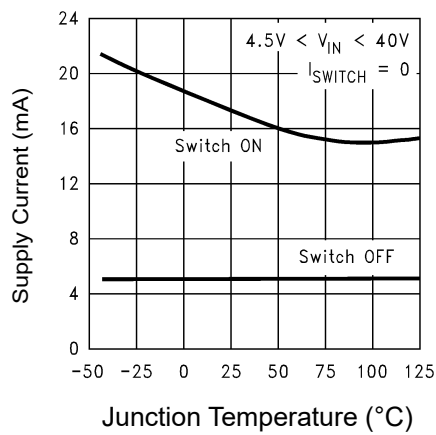


Figure 7: Quiescent Current

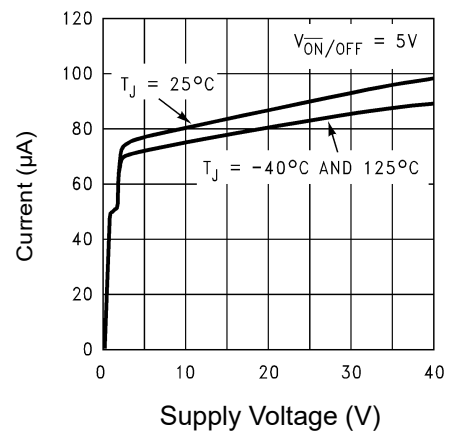


Figure 8: Quiescent Current

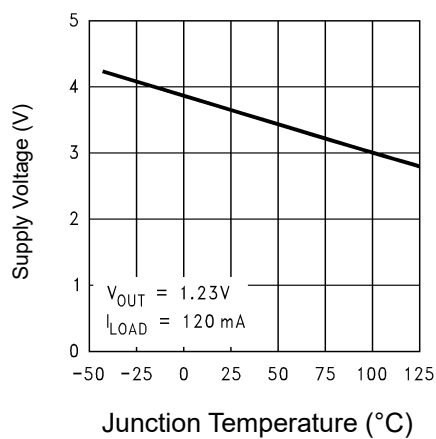


Figure 9: Supply Voltage

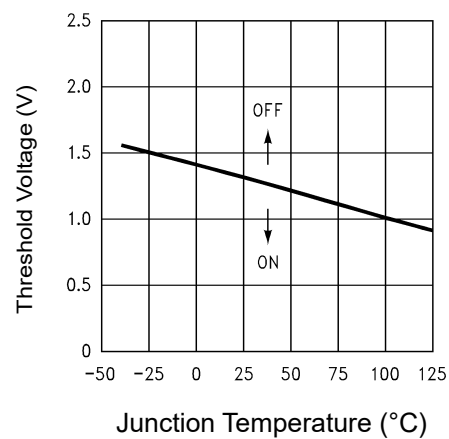


Figure 10: ON/OFF Threshold Voltage

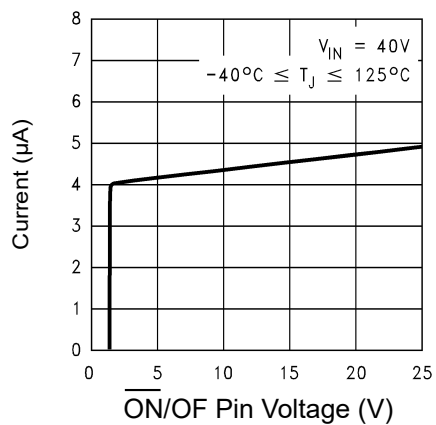


Figure 11: ON/OFF Pin Current (Sinking)

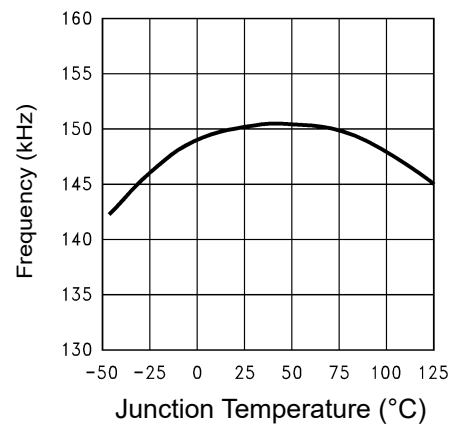


Figure 12: Switching Frequency



## 12. Series Buck Regulator Design Procedure (Fixed Output) (Continued)

Conditions			Inductor		Output Capacitor			
					Through Hole Electrolytic		Surface Mount Tantalum	
Output Voltage (V)	Load Current (A)	Max Input Voltage (V)	Inductance (μH)	Inductor (#)	Panasonic HFQ Series (μF/V)	Nichicon PL Series (μF/V)	AVX TPS Series (μF/V)	Sprague 595D Series (μF/V)
3.3	2	5	22	L41	470/25	560/16	330/6.3	390/6.3
		7	22	L41	560/35	560/35	330/6.3	390/6.3
		10	22	L41	680/35	680/35	330/6.3	390/6.3
		40	33	L40	560/35	470/35	330/6.3	390/6.3
	2	6	22	L33	470/25	470/35	330/6.3	390/6.3
		10	33	L32	330/35	330/35	330/6.3	390/6.3
		40	47	L39	330/35	270/50	220/10	330/10
5	2	8	22	L41	470/25	560/16	220/10	330/10
		10	22	L41	560/25	560/25	220/10	330/10
		15	33	L40	330/35	330/35	220/10	330/10
		40	47	L39	330/35	270/35	220/10	330/10
	2	9	22	L33	470/25	560/16	220/10	330/10
		20	68	L38	180/35	180/35	100/10	270/10
		40	68	L38	180/35	180/35	100/10	270/10
12	2	15	22	L41	470/25	470/25	100/16	180/16
		18	33	L40	330/25	330/25	100/16	180/16
		30	68	L44	180/25	180/25	100/16	120/20
		40	68	L44	180/35	180/35	100/16	120/20
	2	15	33	L32	330/25	330/25	100/16	180/16
		20	68	L38	180/25	180/25	100/16	120/20
		40	150	L42	82/25	82/25	68/20	68/25

Figure 2. LM2575 Fixed Voltage Quick Design Component Selection Table



### 13. Series Buck Regulator Desing Procedure (Adjustable Output)

Output Voltage (V)	Through Hole Output Capacitor			Surface Mount Output Capacitor		
	Panasonic HFQ Series (μF/V)	Nichicon PL Series (μF/V)	Feedforward capacitor	AVX TPS Series (μF/V)	Sprague 595D Series (μF/V)	Feedforward Capacitor
2	820/35	820/35	33nF	330/6.3	470/4	33nF
4	560/35	470/35	10nF	330/6.3	390/6.3	10nF
6	470/25	470/25	3.3nF	220/10	330/10	3.3nF
9	330/25	330/25	1.5nF	100/16	180/16	1.5nF
12	330/25	330/25	1nF	100/16	180/16	1nF
15	220/35	220/35	680pF	68/20	120/20	680pF
24	220/35	150/35	560pF	33/25	33/25	220pF
28	100/50	100/50	390pF	10/35	15/50	220pF

Figure 3. Output Capacitor and Feedforward Capacitor Selection Table



## 14.LM2575/LM2575HV Series Buck Regulator Design Procedure

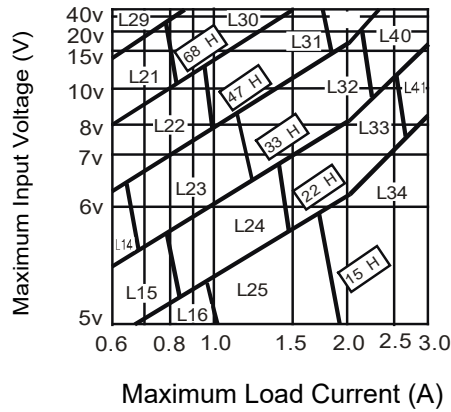


Figure 4: LM2575/LM2575HV-3.3

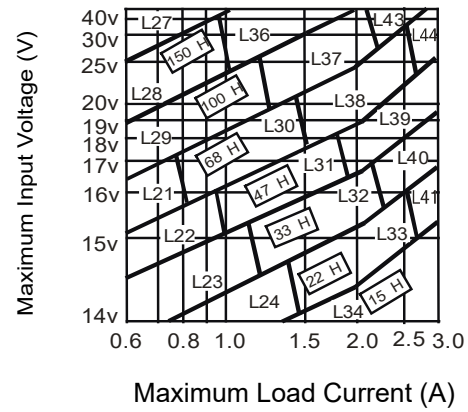


Figure 5: LM2575/LM2575HV-12

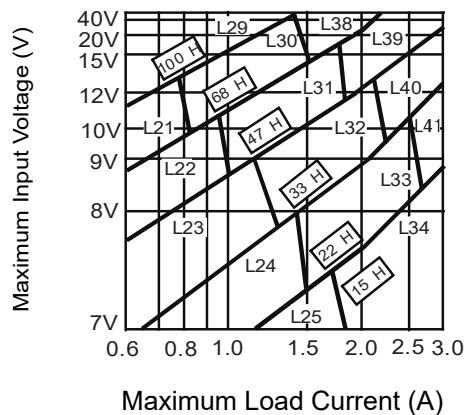


Figure 6: LM2575/LM2575HV-5.0

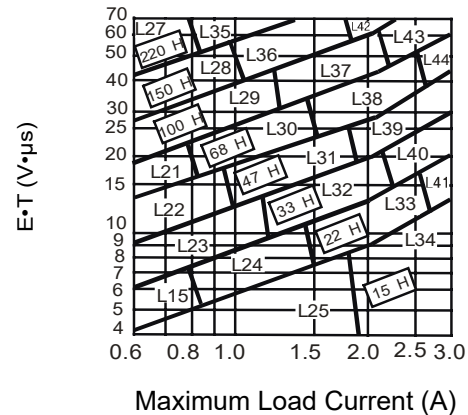
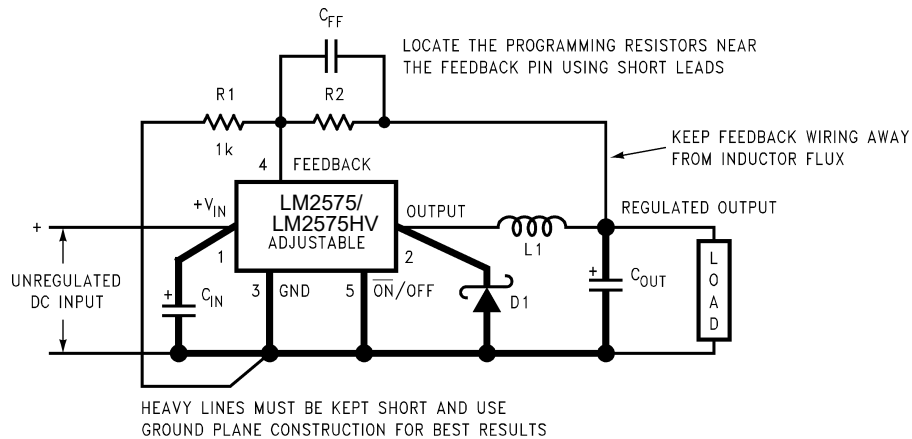


Figure 7: LM2575/LM2575HV-ADJ



## 15. Test Circuit and Layout Guidelines (Continued)

### Adjustable Output Voltage Versions



$$V_{OUT} = V_{REF} (1 + R_2/R_1)$$

where  $V_{REF} = 1.23V$

$$R_2 = R_1 (V_{OUT}/V_{REF} - 1)$$

Select  $R_1$  to be approximately 1 k $\Omega$ , use a 1% resistor for best stability.

$C_{IN}$  — 470 $\mu$ F, 50V, Aluminum Electrolytic Nichicon “PL Series”

$C_{OUT}$  — 220  $\mu$ F, 35V Aluminum Electrolytic, Nichicon “PL Series”

D1 — 5A, 40V Schottky Rectifier, 1N5825

L1 — 68  $\mu$ H, L38

R1 — 1 k $\Omega$ , 1%

$C_{FF}$  — See Application Information Section

Figure 1. Standard Test Circuits and Layout Guides



As in any switching regulator, layout is very important. Rapidly switching currents associated with wiring inductance can generate voltage transients which can cause problems. For minimal inductance and ground loops, the wires indicated by heavy lines should be wide printed circuit traces and should be kept as short as possible. For best results, external components should be located as close to the switcher IC as possible using ground plane construction or single point grounding.

If open core inductors are used, special care must be taken as to the location and positioning of this type of inductor. Allowing the inductor flux to intersect sensitive feedback, IC groundpath and  $C_{OUT}$  wiring can cause problems.

When using the adjustable version, special care must be taken as to the location of the feedback resistors and the associated wiring. Physically locate both resistors near the IC, and route the wiring away from the inductor, especially an open core type of inductor. (See application section for more information.)



## 16. Series Buck Regulator Design Procedure (Adjustable Output)

### Procedure (Adjustable Output Voltage Version)

#### Given:

$V_{OUT}$ =Regulated Output Voltage

$V_{IN(max)}$ =Maximum Input Voltage

$I_{LOAD(max)}$ =Maximum Load Current

F=Switching Frequency (Fixed at a nominal 150 kHz).

#### 1. Programming Output Voltage (Selecting $R_1$ and $R_2$ , as shown in Figure 1)

Use the following formula to select the appropriate resistor values.

$$V_{OUT}=V_{REF}(1+R_2/R_1) \text{ where } V_{REF}=1.23V$$

Select a value for  $R_1$  between 240Ω and 1.5kΩ. The lower resistor values minimize noise pickup in the sensitive feedback pin. (For the lowest temperature coefficient and the best stability with time, use 1% metal film resistors.)

$$R_2=R_1(V_{OUT}/V_{REF}-1)$$

#### 2. Inductor Selection (L1)

A. Calculate the inductor Volt • microsecond constant  $E \cdot T$  ( $V \cdot \mu s$ ), from the following formula:

$$E \cdot T = (V_{IN} - V_{OUT} - V_{SAT}) \cdot \frac{V_{OUT} + V_D}{V_{IN} - V_{SAT} + V_D} \cdot \frac{1000}{150kHz} \quad (V \cdot \mu s)$$

where  $V_{SAT}$ =internal switch saturation voltage=1.16V and  $V_D$ =diode forward voltage drop=0.5V

B. Use the  $E \cdot T$  value from the previous formula and match it with the  $E \cdot T$  number on the vertical axis of the Inductor Value Selection Guide shown in Figure 7.

C. on the horizontal axis, select the maximum load current.

D. Identify the inductance region intersected by the  $E \cdot T$  value and the Maximum Load Current value. Each region is identified by an inductance value and an inductor code (LXX).

E. Select an appropriate inductor from the four manufacturer's part numbers listed in Figure 8.



**EXAMPLE (Adjustable Output Voltage Version)****Given:**

$$V_{OUT} = 20V$$

$$V_{IN(max)} = 28V$$

$$I_{LOAD(max)} = 2A$$

F = Switching Frequency (Fixed at a nominal 150 kHz).

**1. Programming Output Voltage** (Selecting  $R_1$  and  $R_2$ , as shown in Figure 1 )

Select  $R_1$  to be 1 k $\Omega$ , 1%. Solve for  $R_2$ .

$$R_2 = R_1(V_{OUT}/V_{REF} - 1) = 1k(20V/1.23V - 1)$$

$$R_2 = 1k(16.26 - 1) = 15.26k, \text{ closest 1\% value is } 15.4 \text{ k}\Omega. R_2 = 15.4 \text{ k}\Omega.$$

**2. Inductor Selection (L1)**

A. Calculate the inductor Volt • microsecond constant ( $E \cdot T$ )

$$E \cdot T = (28 - 20 - 1.16) \cdot \frac{20 + 0.5}{28 - 1.16 + 0.5} \cdot \frac{1000}{150} \text{ (V} \cdot \mu\text{S)}$$

$$E \cdot T = (6.84) \cdot \frac{20.5}{27.34} \cdot 6.67 \text{ (V} \cdot \mu\text{S)} = 34.2 \text{ (V} \cdot \mu\text{S)}$$

$$B. E \cdot T = 34.2 \text{ (V} \cdot \mu\text{s)}$$

$$C. I_{LOAD(max)} = 2A$$

D. From the inductor value selection guide shown in Figure 7, the inductance region intersected by the 34 (V •  $\mu$ s) horizontal L39.

E. From the table in Figure 8, locate line L39, and select an bers.



## 17. Block Diagram

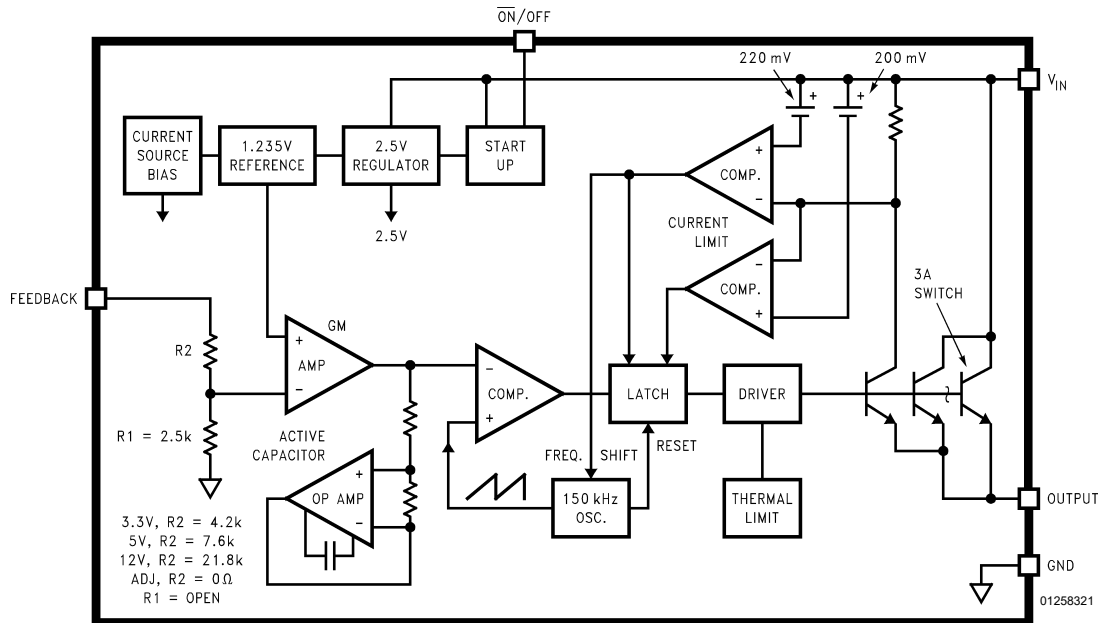


Figure 12.

## 18. Application Information

### Pin Functions

**+V<sub>IN</sub>** – This is the positive input supply for the IC switching regulator. A suitable input bypass capacitor must be present at this pin to minimize voltage transients and to supply the switching currents needed by the regulator.

**Ground** – Circuit ground.

**Output** – Internal switch. The voltage at this pin switches between (+V<sub>IN</sub> – V<sub>SAT</sub>) and approximately –0.5V, with a duty cycle of approximately V<sub>OUT</sub>/V<sub>IN</sub>. To minimize coupling to sensitive circuitry, the PC board copper area connected to this pin should be kept to a minimum.

**Feedback** – Senses the regulated output voltage to complete the feedback loop.

**$\overline{\text{ON}}/\text{OFF}$**  – Allows the switching regulator circuit to be shut down using logic level signals thus dropping the total input supply current to approximately 80  $\mu\text{A}$ . Pulling this pin below a threshold voltage of approximately 1.3V turns the regulator on, and pulling this pin above 1.3V (up to a maximum of 25V) shuts the regulator down. If this shutdown feature is not needed, the  $\overline{\text{ON}}/\text{OFF}$  pin can be wired to the ground pin or it can be left open, in either case the regulator will be in the ON condition.



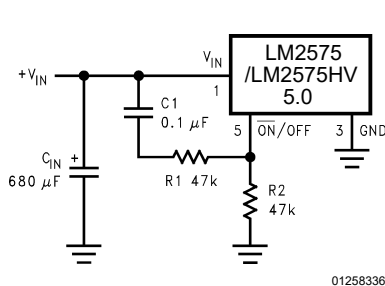
## External Components

### Input Capacitor

$C_{IN}$  — A low ESR aluminum or tantalum bypass capacitor is needed between the input pin and ground pin. It must be located near the regulator using short leads. This capacitor prevents large voltage transients from appearing at the input, and provides the instantaneous current needed each time the switch turns on.

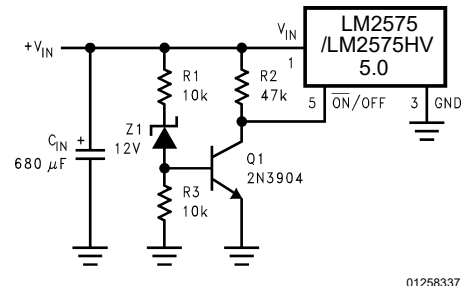
The important parameters for the Input capacitor are the voltage rating and the RMS current rating. Because of the relatively high RMS currents flowing in a buck regulator's input capacitor, this capacitor should be chosen for its RMS current rating rather than its capacitance or voltage ratings, although the capacitance value and voltage rating are directly related to the RMS current rating.

The RMS current rating of a capacitor could be viewed as a capacitor's power rating. The RMS current flowing through the capacitors internal ESR produces power which causes the internal temperature of the capacitor to rise. The RMS current rating of a capacitor is determined by the amount of current required to raise the internal temperature approximately 10°C above an ambient temperature of 105°C. The ability of the capacitor to dissipate this heat to the surrounding air will determine the amount of current the capacitor can safely sustain. Capacitors that are physically large and have a large surface area will typically have higher RMS current ratings. For a given capacitor value, a higher voltage electrolytic capacitor will be physically larger than a lower voltage capacitor, and thus be able to dissipate more heat to the surrounding air, and therefore will have a higher RMS current rating.

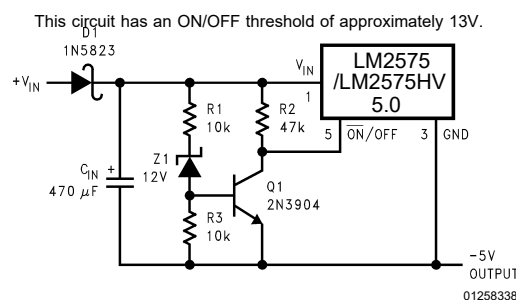


01258336

Figure 21. Delayed Startup



01258337

Figure 22. Undervoltage Lockout  
for Buck Regulator

01258338

for Inverting Regulator

Figure 23. Undervoltage Lockout



### Delayed Startup

The circuit in Figure 21 uses the  $\overline{\text{ON}}$  /OFF pin to provide a time delay between the time the input voltage is applied and the time the output voltage comes up (only the circuitry pertaining to the delayed start up is shown). As the input voltage rises, the charging of capacitor C1 pulls the  $\overline{\text{ON}}$  /OFF pin high, keeping the regulator off. Once the input voltage reaches its final value and the capacitor stops charging, and resistor R<sub>2</sub> pulls the  $\overline{\text{ON}}$  /OFF pin low, thus allowing the circuit to start switching. Resistor R<sub>1</sub> is included to limit the maximum voltage applied to the  $\overline{\text{ON}}$  /OFF pin (maximum of 25V), reduces power supply noise sensitivity, and also limits the capacitor, C1, discharge current. When high input ripple voltage exists, avoid long delay time, because this ripple can be coupled into the  $\overline{\text{ON}}$  /OFF pin and cause problems. This delayed startup feature is useful in situations where the input power source is limited in the amount of current it can deliver. It allows the input voltage to rise to a higher voltage before the regulator starts operating. Buck regulators require less input current at higher input voltages.

### Undervoltage Lockout

Some applications require the regulator to remain off until the input voltage reaches a predetermined voltage. An undervoltage lockout feature applied to a buck regulator is shown in Figure 22, while Figure 23 and 24 applies the same feature to an inverting circuit. The circuit in Figure 23 features a constant threshold voltage for turn on and turn off (zener voltage plus approximately one volt). If hysteresis is needed, the circuit in Figure 24 has a turn ON voltage which is different than the turn OFF voltage. The amount of hysteresis is approximately equal to the value of the output voltage. If zener voltages greater than 25V are used, an additional 47 kΩ resistor is needed from the  $\overline{\text{ON}}$  /OFF pin to the ground pin to stay within the 25V maximum limit of the  $\overline{\text{ON}}$  /OFF pin.

### Inverting Regulator

The circuit in Figure 25 converts a positive input voltage to a negative output voltage with a common ground. The circuit operates by bootstrapping the regulator's ground pin to the negative output voltage, then grounding the feedback pin. This example uses the LM2575/LM2575HV-5.0 to generate a -5V output, but other output voltages are possible by selecting other output voltage versions, including the adjustable version. Since this regulator topology can produce an output voltage that is either greater than or less than the input voltage, the maximum output current greatly depends on both the input and output voltage. The curve shown in Figure 26 provides a guide as to the amount of output load current possible for the different input and output voltage conditions.

**Example (Adjustable Output Voltage Version)****Given:**

$$V_{OUT}=20V$$

$$V_{IN(max)}=28V$$

$$I_{LOAD(max)}=3A$$

F=Switching Frequency (Fixed at a nominal 150 kHz).

1. Programming Output Voltage (Selecting  $R_1$  and  $R_2$ , as shown in Figure 1) Select  $R_1$  to be 1 k $\Omega$ , 1%. Solve for  $R_2$

$$R_2=R_1\left(\frac{V_{OUT}}{V_{REF}}-1\right)=1k\left(\frac{20V}{1.23V}-1\right)$$

$$R_2=1k(16.26-1)=15.26k, \text{ closest 1\% value is } 15.4k\Omega, R_2=15.4k\Omega.$$

**2. Inductor Selection (L1)**

A. Calculate the inductor Volt • microsecond constant ( $E \cdot T$ ),

$$E \cdot T=(28-20-1.16) \cdot \frac{20+0.5}{28-1.16+0.5} \cdot \frac{1000}{150} \text{ (V} \cdot \mu\text{s)}$$

$$E \cdot T=(6.84) \cdot \frac{20.5}{27.34} \cdot 6.67 \text{ (V} \cdot \mu\text{s)}=34.2 \text{ (V} \cdot \mu\text{s)}$$

$$B. E \cdot T=34.2 \text{ (V} \cdot \mu\text{s)}$$

$$C. I_{LOAD(max)}=3A$$

D. From the inductor value selection guide shown in Figure 7, the inductance region intersected by the 34 (V• $\mu$ s) horizontal line and the 3A vertical line is 47  $\mu$ H, and the inductor code is L39.

E. From the table in Figure 8, locate line L39, and select an inductor part number from the list of manufacturers part numbers.



### 3. Output Capacitor Selection ( $C_{OUT}$ )

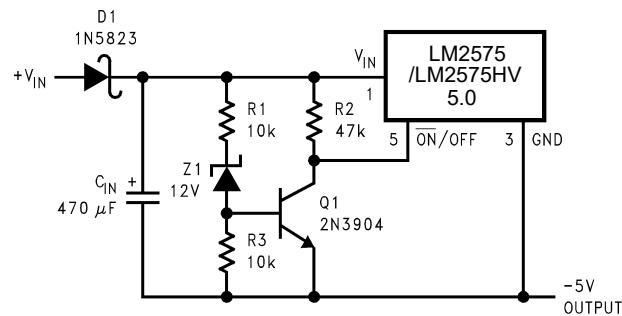
B. From the quick design table shown in Figure 3, locate the output voltage column. From that column, locate the output voltage closest to the output voltage in your application. In this example, select the 24V line. Under the output capacitor section, select a capacitor from the list of through hole electrolytic or surface mount tantalum types from four different capacitor manufacturers. It is recommended that both the manufacturers and the manufacturers series that are listed in the table be used.

In this example, through hole aluminum electrolytic capacitors from several different manufacturers are available. 220  $\mu$ F/35V Panasonic HFQ Series 150  $\mu$ F/35V Nichicon PL Series.

C. For a 20V output, a capacitor rating of at least 30V or more is needed. In this example, either a 35V or 50V capacitor would work. A 35V rating was chosen, although a 50V rating could also be used if a lower output ripple voltage is needed. Other manufacturers or other types of capacitors may also be used, provided the capacitor specifications (especially the 100 kHz ESR) closely match the types listed in the table. Refer to the capacitor manufacturers data sheet for this information.

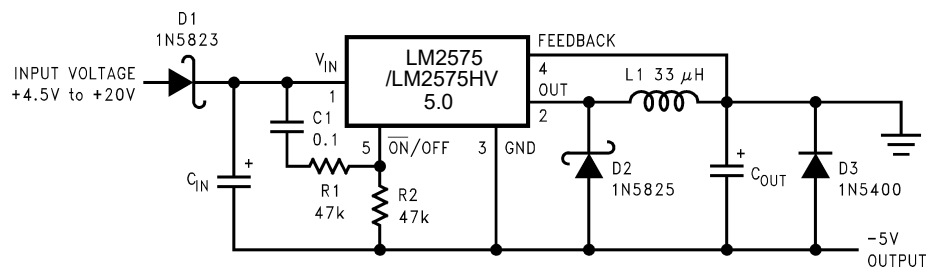
### 4. Feedforward Capacitor ( $C_{FF}$ )

The table shown in Figure 3 contains feed forward capacitor values for various output voltages. In this example, a 560pF capacitor is needed.



This circuit has hysteresis Regulator starts switching at  $V_{IN} = 13V$  Regulator stops switching at  $V_{IN} = 8V$

Figure 24. Undervoltage Lockout with Hysteresis for Inverting Regulator



$C_{IN}$  — 68μF/25V Tant. Sprague 595D

470μF/50V Elec. Panasonic HFQ

$C_{OUT}$  — 47 μF/20V Tant. Sprague 595D

220μF/25V Elec. Panasonic HFQ

Figure 25. Inverting -5V Regulator with Delayed Startup

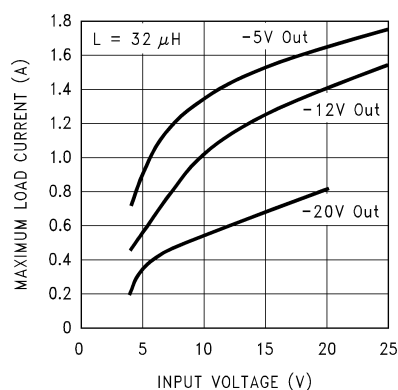


Figure 26. Inverting Regulator Typical Load Current



Because of differences in the operation of the inverting regulator, the standard design procedure is not used to select the inductor value. In the majority of designs, a 33  $\mu\text{H}$ , 3.5A inductor is the best choice. Capacitor selection can also be narrowed down to just a few values. Using the values shown in Figure 25 will provide good results in the majority of inverting designs.

This type of inverting regulator can require relatively large amounts of input current when starting up, even with light loads. Input currents as high as the LM2575 /LM2575HV current limit (approx 4.5A) are needed for at least 2 ms or more, until the output reaches its nominal output voltage. The actual time depends on the output voltage and the size of the output capacitor. Input power sources that are current limited or sources that can not deliver these currents without getting loaded down, may not work correctly. Because of the relatively high startup currents required by the inverting topology the delayed startup feature ( $C_1$ ,  $R_1$  and  $R_2$ ) shown in Figure 25 is recommended. By delaying the regulator startup, the input capacitor is allowed to charge up to a higher voltage before the switcher begins operating. A portion of the high input current needed for startup is now supplied by the input capacitor ( $C_{IN}$ ). For severe start up conditions, the input capacitor can be made much larger than normal.

### Inverting Regulator Shutdown Methods

To use the  $\overline{\text{ON}}$  /OFF pin in a standard buck configuration is simple, pull it below 1.3V(@25°C, referenced to ground) to turn regulator ON, pull it above 1.3V to shut the regulator OFF. With the inverting configuration, some level shifting is required, because the ground pin of the regulator is no longer at ground, but is now setting at the negative output voltage level. Two different shutdown methods for inverting regulators are shown in Figure 27 and 28.



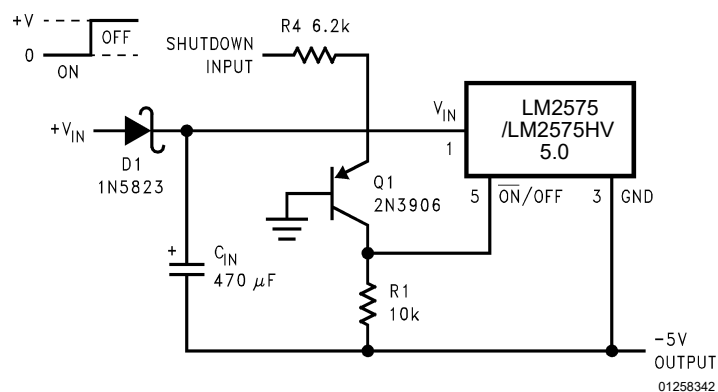


Figure 27. Inverting Regulator Ground Referenced Shutdown

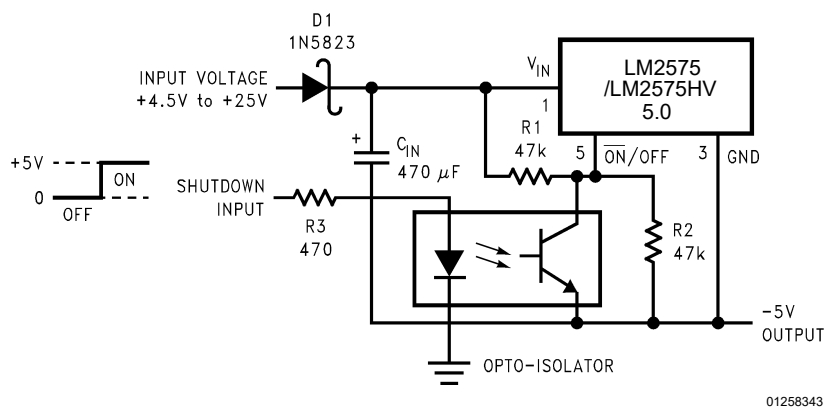
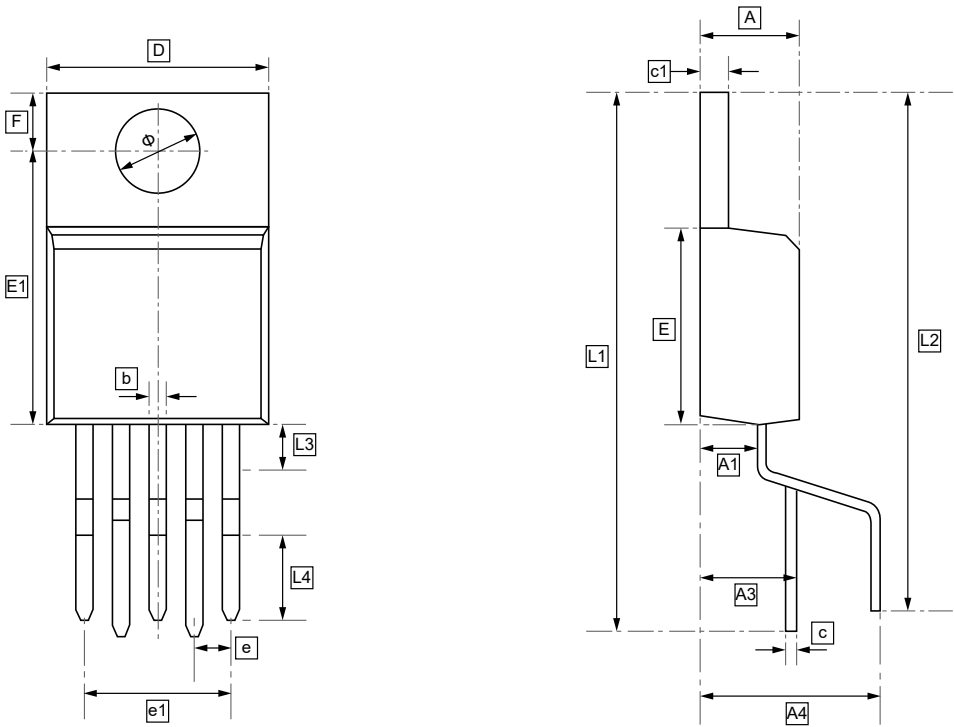


Figure 28. Inverting Regulator Ground Referenced Shutdown using Opto Device



19.1 TO220B-5L Package Outline Dimensions



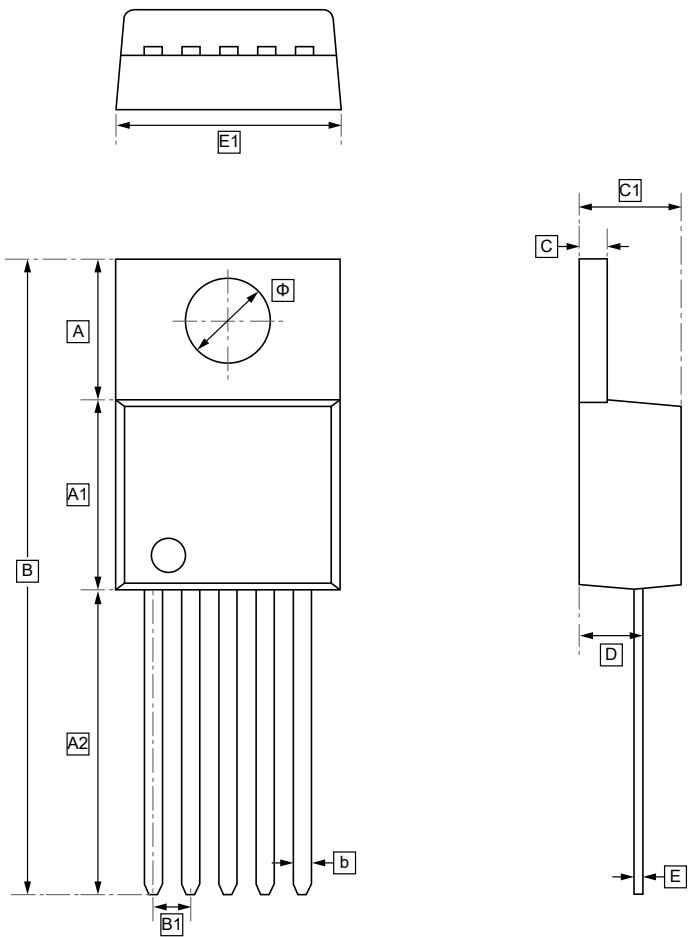
DIMENSIONS (mm are the original dimensions)

Symbol	A	A1	A3	A4	b	c	c1	D	E	E1	e	e1
Min	4.470	2.520	4.450	8.350	0.710	0.310	1.170	10.010	8.900	12.460	1.700	6.700
Max	4.670	2.820	4.850	8.750	0.910	0.530	1.370	10.310	9.300	12.860	TYP	6.900

Symbol	F	L1	L2	L3	L4	R	Φ
Min	2.590	26.800	24.800	1.000	6.000	0.950	3.790
Max	2.890	27.400	25.200	2.000	6.400	1.050	3.890



19.2 TO-220 Package Outline Dimensions

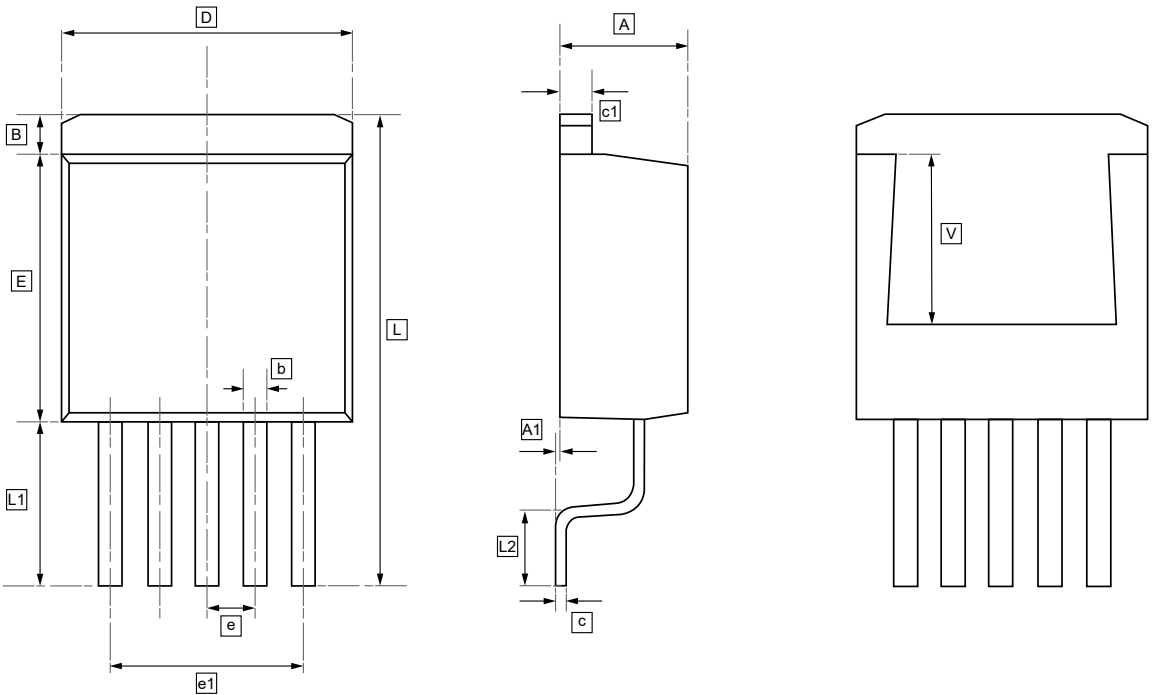


DIMENSIONS (mm are the original dimensions)

Symbol	A	A1	A2	B	B1	b	C	C1	D	E	E1	Φ
Min	6.3	8.48	13.67	28.55	1.70	0.75	1.20	0.45	2.38	0.33	10.00	3.80
Max	6.4	8.68	13.97	28.95		0.85	1.30	0.65	2.58	0.43	10.20	3.90



19.3 TO-263 Package Outline Dimensions



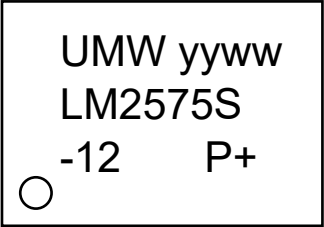
DIMENSIONS (mm are the original dimensions)

Symbol	A	A1	B	b	c	c1	D	E	e	e1	L	L1
Min	4.470	0.000	1.560	0.710	0.310	1.170	9.880	8.200	1.700	6.700	15.140	5.080
Max	4.670	0.150	1.760	0.910	0.530	1.370	10.180	8.600	TYP	6.900	15.540	5.480

Symbol	L2	V
Min	2.340	5.600
Max	2.740	REF



20.Ordering Information



yy: Year Code  
ww: Week Code

Order Code	Marking	Package	Base QTY	Delivery Mode
UMW LM2575HVS-xx	LM2575HVS-xx	TO-263	800	Tape and reel
UMW LM2575S-xx	LM2575S-xx	TO-263	800	Tape and reel
UMW LM2575HVT-xx	LM2575HVT-xx	TO-220	1000	Tape and box
UMW LM2575T-xx	LM2575T-xx	TO-220	1000	Tape and box



## 21.Disclaimer

UMW reserves the right to make changes to all products, specifications. Customers should obtain the latest version of product documentation and verify the completeness and currency of the information before placing an order.

When applying our products, please do not exceed the maximum rated values, as this may affect the reliability of the entire system. Under certain conditions, any semiconductor product may experience faults or failures. Buyers are responsible for adhering to safety standards and implementing safety measures during system design, prototyping, and manufacturing when using our products to prevent potential failure risks that could lead to personal injury or property damage.

Unless explicitly stated in writing, UMW products are not intended for use in medical, life-saving, or life-sustaining applications, nor for any other applications where product failure could result in personal injury or death. If customers use or sell the product for such applications without explicit authorization, they assume all associated risks.

When reselling, applying, or exporting, please comply with export control laws and regulations of China, the United States, the United Kingdom, the European Union, and other relevant countries, regions, and international organizations.

This document and any actions by UMW do not grant any intellectual property rights, whether express or implied, by estoppel or otherwise. The product names and marks mentioned herein may be trademarks of their respective owners.