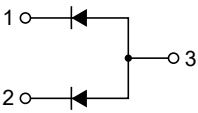
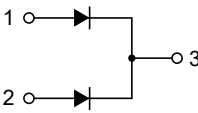
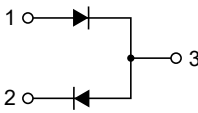
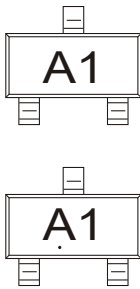
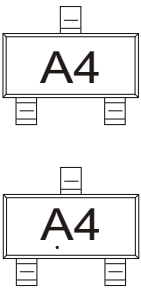
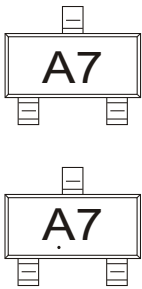


1.Features

- Fast Switching Speed
- High Conductance
- For General Purpose Switching Applications
- BAW56/BAV70/BAV99, SWITCHING DIODE

2.Pinning Information

BAW56	BAV70	BAV99
		
MARKING:A1	MARKING:A4	MARKING:A7
		

Solid dot = Green molding compound device, if none, the normal device

3.Limiting Service Range

Parameter	Symbol	Value	Units
Reverse Voltage	V_R	70	V
Forward Current	I_F	200	mA
Non-Repetitive Peak Forward Surge Current @t=8.3ms	I_{FSM}	2	A
Power Dissipation	P_D	225	mW
Thermal Resistance Junction to Ambient	$R_{\theta JA}$	556	°C/W
Junction Temperature	T_J	150	°C
Storage Temperature range	T_{STG}	-55 to 150	°C



4. Electrical Characteristics ($T_A=25^{\circ}\text{C}$ unless otherwise specified)

Parameter	Symbol	Conditions	Min	Max	Units
Reverse breakdown voltage	V_R	$I_R=100\mu\text{A}$	70		V
Forward voltage	V_{F1}	$I_F=1\text{mA}$		0.715	V
	V_{F2}	$I_F=10\text{mA}$		0.855	V
	V_{F3}	$I_F=50\text{mA}$		1	V
	V_{F4}	$I_F=150\text{mA}$		1.25	V
Reverse current	I_R	$V_R=70\text{V}$		2.5	μA
Capacitance between terminals	C_T	$V_R=0\text{V}$, $f=1\text{MHz}$		1.5	pF
Reverse recovery time	t_{rr}	$I_F=I_R=10\text{mA}$, $I_{rr}=0.1\times I_R$, $R_L=100\Omega$		6	ns

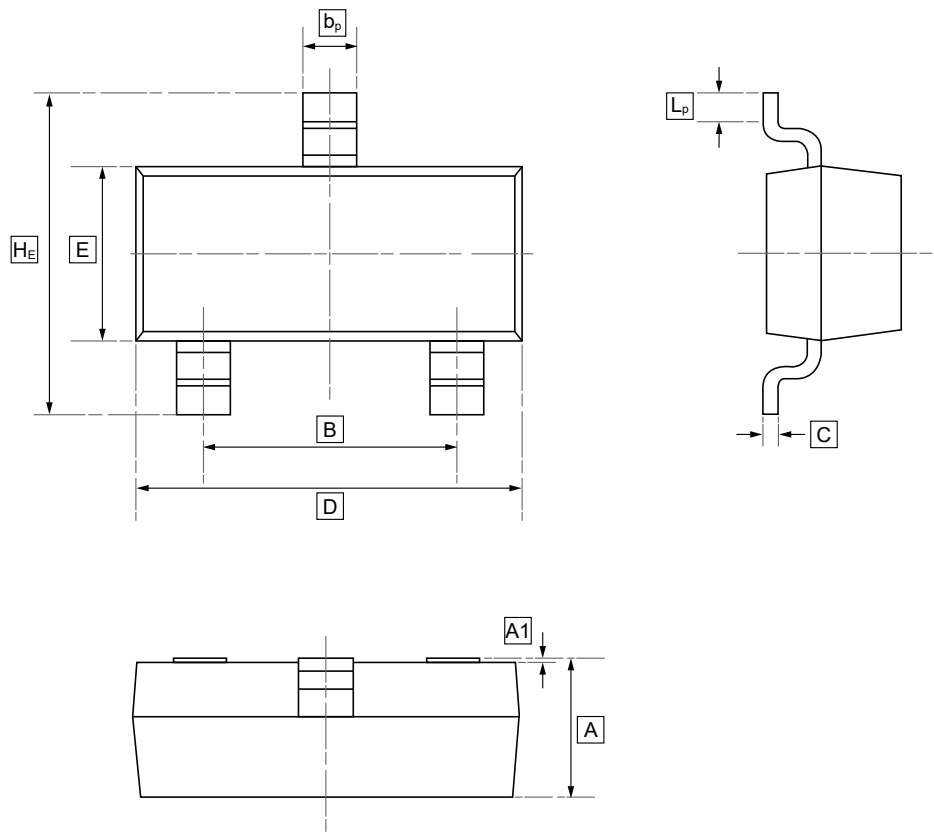


5. Typical Characteristic

Figure 1: Forward Characteristics	Figure 2: Reverse Characteristics
Figure 3: Capacitance Characteristics	Figure 4: Power Derating Curve



6.SOT-23 Package Outline Dimensions

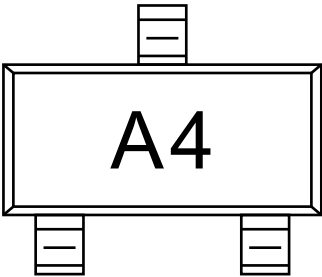


DIMENSIONS (mm are the original dimensions)

Symbol	A	B	b _p	C	D	E	H _E	A1	L _p
Min	0.95	1.78	0.35	0.08	2.70	1.20	2.20	0.013	0.20
Max	1.40	2.04	0.50	0.19	3.10	1.65	3.00	0.100	0.50



7.Ordering Information



Order Code	Marking	Package	Base QTY	Delivery Mode
UMW BAW56	A1	SOT-23	3000	Tape and reel
UMW BAV70	A4	SOT-23	3000	Tape and reel
UMW BAV99	A7	SOT-23	3000	Tape and reel



8.Disclaimer

UMW reserves the right to make changes to all products, specifications. Customers should obtain the latest version of product documentation and verify the completeness and currency of the information before placing an order.

When applying our products, please do not exceed the maximum rated values, as this may affect the reliability of the entire system. Under certain conditions, any semiconductor product may experience faults or failures. Buyers are responsible for adhering to safety standards and implementing safety measures during system design, prototyping, and manufacturing when using our products to prevent potential failure risks that could lead to personal injury or property damage.

Unless explicitly stated in writing, UMW products are not intended for use in medical, life-saving, or life-sustaining applications, nor for any other applications where product failure could result in personal injury or death. If customers use or sell the product for such applications without explicit authorization, they assume all associated risks.

When reselling, applying, or exporting, please comply with export control laws and regulations of China, the United States, the United Kingdom, the European Union, and other relevant countries, regions, and international organizations.

This document and any actions by UMW do not grant any intellectual property rights, whether express or implied, by estoppel or otherwise. The product names and marks mentioned herein may be trademarks of their respective owners.