

1.Description

The SMxx Series is designed for applications requiring transient overvoltage protection capability. They are intended for use in voltage and ESD sensitive equipment such as computers, printers, business machines, communication systems, medical equipment and other applications. These devices are ideal for situations where board space is at a premium.

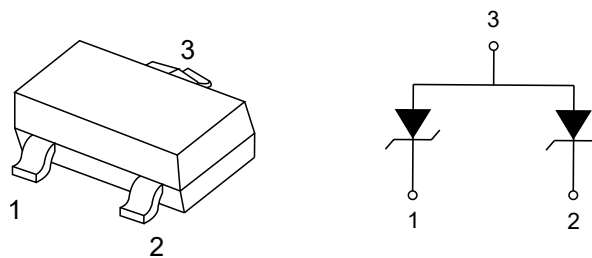
2.Features

- IEC61000-4-2 (ESD) $\pm 15\text{kV}$ (air), $\pm 8\text{kV}$ (contact)
- IEC61000-4-4 (EFT) 40A (5/50ns)
- 350 Watts Peak Pulse Power per ($t_p=8/20\mu\text{s}$)
- Protects one bidirectional line or two unidirectional lines
- Low clamping voltage
- Working voltages : 3.3V to 36V
- Low leakage current

3.Applications

- Cell Phone Handsets and Accessories
- Microprocessor based equipment
- Personal Digital Assistants (PDA's)
- Notebooks, Desktops, and Servers
- Portable Instrumentation
- Networking and Telecom
- Serial and Parallel Ports.
- Peripherals

4.Pinning information



SOT-23



5. Absolute Maximum Ratings

Parameter	Symbol	Value	Units
ESD per IEC 61000-4-2 (Air)	V_{ESD}	± 15	kV
ESD per IEC 61000-4-2 (Contact)		± 8	kV
Peak Pulse Power (8/20 μ s)	P_{PP}	350	W
Junction Temperature	T_{OPT}	-55 to 150	°C
Storage Temperature	T_{STG}	-55 to 150	°C
Lead Soldering Temperature	T_L	260 (10 sec.)	°C



6.Electrical Characteristics(T_J=25°C)

PART NUMBER	DEVICE MARKING	V _{RWM}	V _B	I _T	V _{C@1A}	V _C		I _R	C _J
		(V)	(V)	(mA)	(V)	(V)		(μA)	(pF)
		(max.)	(min.)		(max.)	(max.)	(@A)	(max.)	(max.)
UMW SM03	M03	3.3	4	1	7.0	14	20	40	450
UMW SM05	M05	5	6	1	9.8	18	17	10	300
UMW SM08	M08	8	8.5	1	13.4	24	15	2	240
UMW SM12	M12	12	13.3	1	19	32	11	1	130
UMW SM15	M15	15	16.7	1	24	38	10	1	120
UMW SM18	M18	18	20	1	29	45	9	1	100
UMW SM24	M24	24	26.7	1	43	52	7	1	80
UMW SM36	M36	36	40	1	60	75	5	1	60

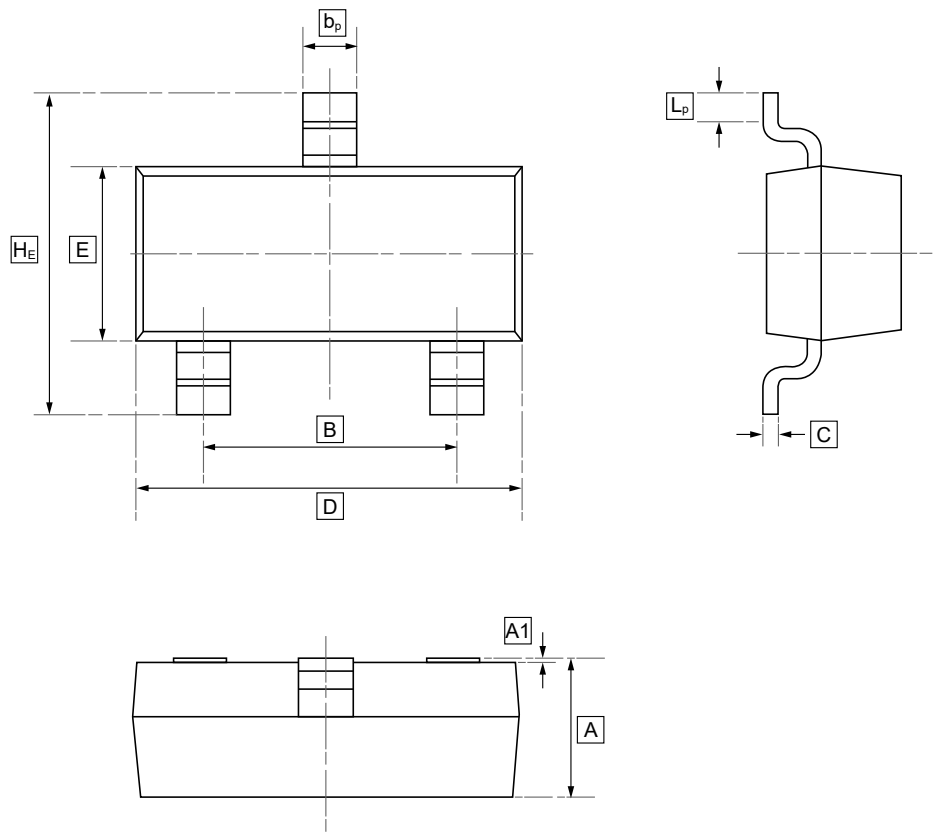


7. Typical characteristic

Figure 1: Pulse Waveform	Figure 2: Power Derating Curve
Figure 3: 8/20µs Pulse Waveform	



8.SOT-23 Package Outline Dimensions

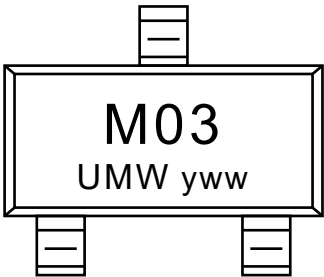


DIMENSIONS (mm are the original dimensions)

Symbol	A	B	b _p	C	D	E	H _E	A1	L _p
Min	0.95	1.78	0.35	0.08	2.70	1.20	2.20	0.013	0.20
Max	1.40	2.04	0.50	0.19	3.10	1.65	3.00	0.100	0.50



9.Ordering information



yww: Batch Code

Order Code	Marking	Package	Base QTY	Delivery Mode
UMW SM03	M03	SOT-23	3000	Tape and reel
UMW SM05	M05	SOT-23	3000	Tape and reel
UMW SM08	M08	SOT-23	3000	Tape and reel
UMW SM12	M12	SOT-23	3000	Tape and reel
UMW SM15	M15	SOT-23	3000	Tape and reel
UMW SM24	M24	SOT-23	3000	Tape and reel
UMW SM36	M36	SOT-23	3000	Tape and reel



10.Disclaimer

UMW reserves the right to make changes to all products, specifications. Customers should obtain the latest version of product documentation and verify the completeness and currency of the information before placing an order.

When applying our products, please do not exceed the maximum rated values, as this may affect the reliability of the entire system. Under certain conditions, any semiconductor product may experience faults or failures. Buyers are responsible for adhering to safety standards and implementing safety measures during system design, prototyping, and manufacturing when using our products to prevent potential failure risks that could lead to personal injury or property damage.

Unless explicitly stated in writing, UMW products are not intended for use in medical, life-saving, or life-sustaining applications, nor for any other applications where product failure could result in personal injury or death. If customers use or sell the product for such applications without explicit authorization, they assume all associated risks.

When reselling, applying, or exporting, please comply with export control laws and regulations of China, the United States, the United Kingdom, the European Union, and other relevant countries, regions, and international organizations.

This document and any actions by UMW do not grant any intellectual property rights, whether express or implied, by estoppel or otherwise. The product names and marks mentioned herein may be trademarks of their respective owners.