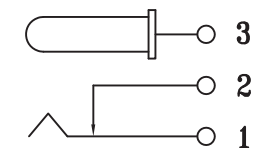
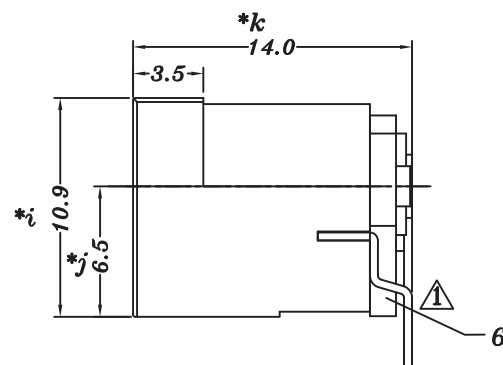
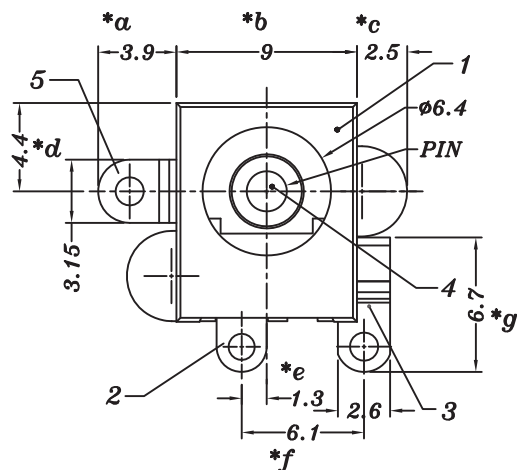
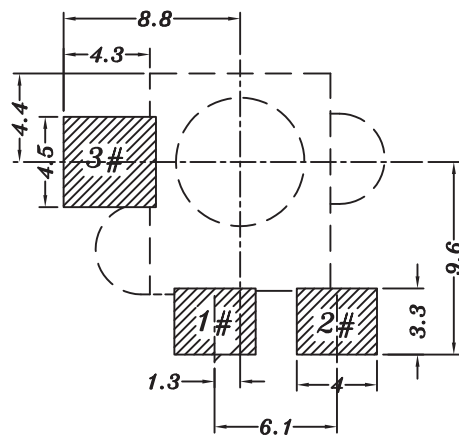
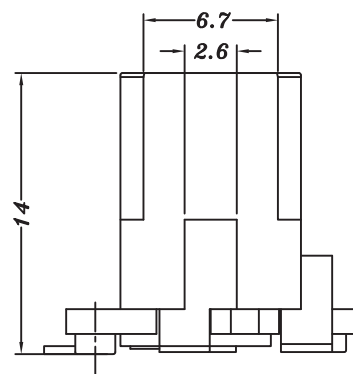



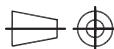
PIN	ø2.0	ø2.5
APPD.	✓	



SCHEMATIC



P.C.B LAYOUT

					TOLERANCE UNLESS SPECIFIED							
6	DC515 COVER	PA10T	1	BLCBK	UP TO 5mm: ±0.1	A1	2021.07.02	⚠️应客户要求，改用实芯PIN时，2#弯片新开模，改善制程贴板不良			GYW	
5	DC515 3#FLAT PIECE	BRASS	1	Ag-Plating	ABOVE 5mm: ±0.2	NO	DATE	PARTICULARS			BY	APPD
4	DC515 PIN	BRASS	1	Ni-Plating	TITLE: DC POWER JACK			UNIT : MM	ROHS	DWN		
3	DC515 2#CURVE PIECE	BRASS	1	Ag-Plating	MODEL: DC-515 2.0-PU			SCALE: 4:1	COMPLIANT	CHK'D		
2	DC515 1#SPRING	BRONZE	1	Ag-Plating	 HOOYA ELECTRONIC COMPANY LIMITED. 皓宇电子有限公司				APPD			
1	DC515 CASE	LCP/PA10T	1	BLACK								
NO.	PART NAME	MATERIAL	QTY	FINISHING					PRO.AGL:		REV :A1	