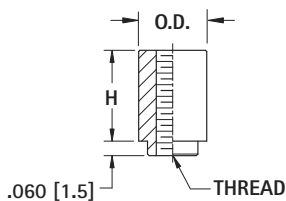
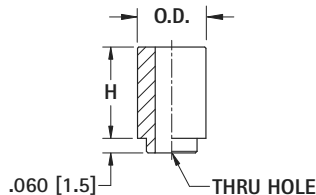


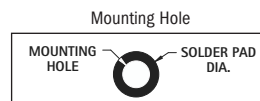
MATERIAL: Steel, Tin Plate
PACKAGING: Supplied on 13 inch reels with Kapton tape added to top surface of standoff for vacuum pickup



THREADED STANDOFFS



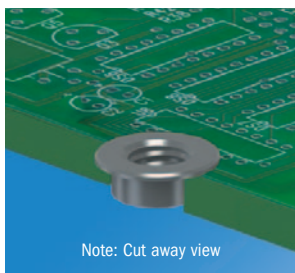
CLEAR HOLE SPACER



| Threaded Metric Standoffs | | | | | | |
|---------------------------|--------------|-------------|--------|---------------------|------------|-----------------|
| CAT. NO. | H HEIGHT | PARTS/ REEL | THREAD | OUTSIDE DIA. (O.D.) | MTG. HOLE | SOLDER PAD DIA. |
| 24881 | 2.00 (.080) | 1500 | M3 | 5.56 (.219) | .166 (4.2) | .244 (6.2) |
| 28442 | 3.00 (.118) | 1000 | | | | |
| 24883 | 4.00 (.157) | 900 | | | | |
| 24884 | 6.00 (.236) | 650 | | | | |
| 24885 | 8.00 (.315) | 375 | | | | |
| 24886 | 10.00 (.394) | 300 | | | | |

| THREADED STANDOFFS | CLEAR HOLE SPACERS | SMT STANDOFFS & SPACERS | | | | | |
|--------------------|--------------------|-------------------------|--------------|--------|---------------------|-------------|-----------------|
| CAT. NO. | CAT. NO. | H HEIGHT | PARTS/ REEL* | THREAD | OUTSIDE DIA. (O.D.) | MTG. HOLE | SOLDER PAD DIA. |
| 4871 | — | .062 (1.57) | 1500 | 2-56 | .219 (5.6) | .147 (3.7) | .244 (6.2) |
| 4872 | | .125 (3.17) | 1000 | | | | |
| 4873 | | .250 (6.35) | 650 | | | | |
| 4881 | 4886 | .062 (1.57) | 1500 | 4-40 | .219 (5.6) | .166 (4.2) | .244 (6.2) |
| 4882 | 4887 | .125 (3.18) | 1000 | | | | |
| 4883 | 4888 | .250 (6.35) | 650 | | | | |
| 4885 | — | .312 (7.94) | 375 | | | | |
| 4884 | 4889 | .375 (9.52) | 300 | 6-32 | .281 (7.1) | .213 (5.41) | .306 (7.8) |
| 4891 | 4896 | .062 (1.57) | 1500 | | | | |
| 4892 | 4897 | .125 (3.18) | 1000 | | | | |
| 4893 | 4898 | .250 (6.35) | 650 | | | | |
| 4894 | 4899 | .375 (9.53) | 300 | | | | |

SURFACE MOUNT THREADED INSERTS



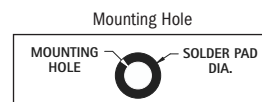
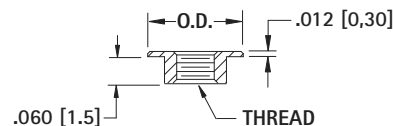
Note: Cut away view

MATERIAL: Steel, Tin Plate
PACKAGING: Supplied on 13 inch reels with Kapton tape added to top surface of standoff for vacuum pick-up

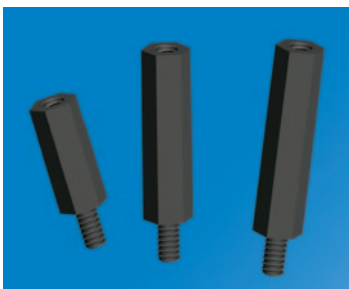
SUPPLIED ON TAPE AND REEL

Zero height threaded inserts sit just .012 (0.30) above the board for an easy method of adding threads to PCB. Can be installed using same equipment and processes as any SMT product.

| Zero Height SMT Threaded Inserts | | | | | |
|----------------------------------|--------|---------------------|-------------|------------|-------------|
| CAT. NO. | THREAD | OUTSIDE DIA. (O.D.) | MTG. HOLE | SOLDER PAD | PARTS/ REEL |
| 4929 | 2-56 | .219 (5.6) | .147 (3.7) | .244 (6.2) | 1500 |
| 4939 | 4-40 | .219 (5.6) | .166 (4.2) | .244 (6.2) | |
| 4949 | 6-32 | .281 (7.1) | .213 (5.41) | .306 (7.8) | |
| 24929 | M2.5 | .219 (5.6) | .166 (4.2) | .244 (6.2) | |
| 24939 | M3 | .219 (5.6) | .166 (4.2) | .244 (6.2) | |
| 24949 | M4 | .281 (7.1) | .213 (5.41) | .306 (7.8) | |

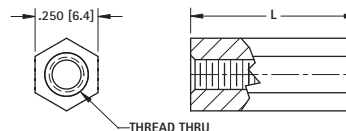
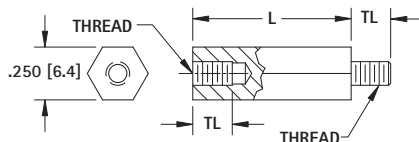


EXTREME TEMPERATURE NYLON STANDOFFS



Keystone's high performance nylon standoffs will stand up to harsh conditions such as automotive under hood applications. The standoffs are manufactured with a material that was specifically designed to survive the most extreme conditions. The plastic is designed to stay pliable and maintain its tensile strength in extreme cold and heat.

MATERIAL: High Performance Nylon 46. Black
Operating Temperature: -20°F to 365°F (-30°C to 185°C)



| THREAD | TL |
|--------|------------|
| 4-40 | .187 (4.7) |
| 6-32 | .250 (6.4) |
| 8-32 | .375 (9.5) |

| HIGH PERFORMANCE MALE/FEMALE | | | |
|------------------------------|---------------|---------------|---------------|
| L LENGTH | 4-40 CAT. NO. | 6-32 CAT. NO. | 8-32 CAT. NO. |
| .250 (6.4)† | 4940 | 4970 | 4980 |
| .375 (9.5) | 4941 | 4971 | 4981 |
| .500 (12.7) | 4942 | 4972 | 4982 |
| .750 (19.1) | 4944 | 4974 | 4984 |
| 1.000 (25.4) | 4946 | 4976 | 4986 |

| HIGH PERFORMANCE FEMALE/FEMALE | | | |
|--------------------------------|---------------|---------------|---------------|
| L LENGTH | 4-40 CAT. NO. | 6-32 CAT. NO. | 8-32 CAT. NO. |
| .250 (6.4) | 4842 | 4874 | 4932 |
| .375 (9.5) | 4843 | 4875 | 4933 |
| .500 (12.7) | 4844 | 4876 | 4934 |
| .750 (19.1) | 4846 | 4878 | 4936 |
| 1.000 (25.4) | 4848 | 4880 | 4938 |

† .140 (3.56) Internal Thread Depth