

# 1MHz CMOS Rail-to-Rail IO Opamp with RF Filter

## Features

- Single-Supply Operation from +1.8V ~ +6V
- Rail-to-Rail Input / Output
- Gain-Bandwidth Product: 1MHz (Typ.)
- Low Input Bias Current: 1pA (Typ.)
- Low Offset Voltage: 3.5mV (Max.)
- Quiescent Current: 75μA per Amplifier (Typ.)
- Operating Temperature: -40°C ~ +125°C
- Embedded RF Anti-EMI Filter
- Small Package:

HGV6001 Available in SOT-23-5 and SC70-5 Packages

HGV6001U Available in SOT-23-5 Packages

HGV6001R Available in SOT-23-5 Packages

HGV6002 Available in SOP8 and MSOP8 Packages

HGV6004 Available in SOP14 and TSSOP14 Packages



## Ordering Information

DEVICE	Package Type	MARKING	Packing	Packing Qty
HGV6001M5/TR	SOT-23-5	6001,AANN <sup>(Note1)</sup>	REEL	3000pcs/reel
HGV6001UM5/TR	SOT-23-5	6001U,AFNN	REEL	3000pcs/reel
HGV6001RM5/TR	SOT-23-5	6001R,ADNN	REEL	3000pcs/reel
HGV6001M7/TR	SC70-5(SOT-353)	6001,AANN,AAN	REEL	3000pcs/reel
HGV6002M/TR	SOP-8	V6002	REEL	2500pcs/reel
HGV6002MM/TR	MSOP-8	V6002	REEL	3000pcs/reel
HGV6004M/TR	SOP-14	HGV6004,V6004	REEL	2500pcs/reel
HGV6004MT/TR	TSSOP-14	V6004	REEL	2500pcs/reel

NOTE1: "NN"=Alphanumeric traceability code

## General Description

The HGV6001 family have a high gain-bandwidth product of 1MHz, a slew rate of 0.8V/ $\mu$ s, and a quiescent current of 75 $\mu$ A/amplifier at 5V. The HGV6001 family is designed to provide optimal performance in low voltage and low noise systems. They provide rail-to-rail output swing into heavy loads. The input common mode voltage range includes ground, and the maximum input offset voltage is 3.5mV for HGV6001 family. They are specified over the extended industrial temperature range (-40°C to +125°C). The operating range is from 1.8V to 6V. The HGV6001 single is available in Green SC70-5 and SOT-23-5 packages. The HGV6001U and HGV6001R single is available in Green SOT-23-5 packages. The HGV6002 dual is available in Green SOP-8 and MSOP-8 packages. The HGV6004 Quad is available in Green SOP-14 and TSSOP-14 packages.

## Applications

- ASIC Input or Output Amplifier
- Sensor Interface
- Medical Communication
- Smoke Detectors
- Audio Output
- Piezoelectric Transducer Amplifier
- Medical Instrumentation
- Portable Systems

## Pin Configuration

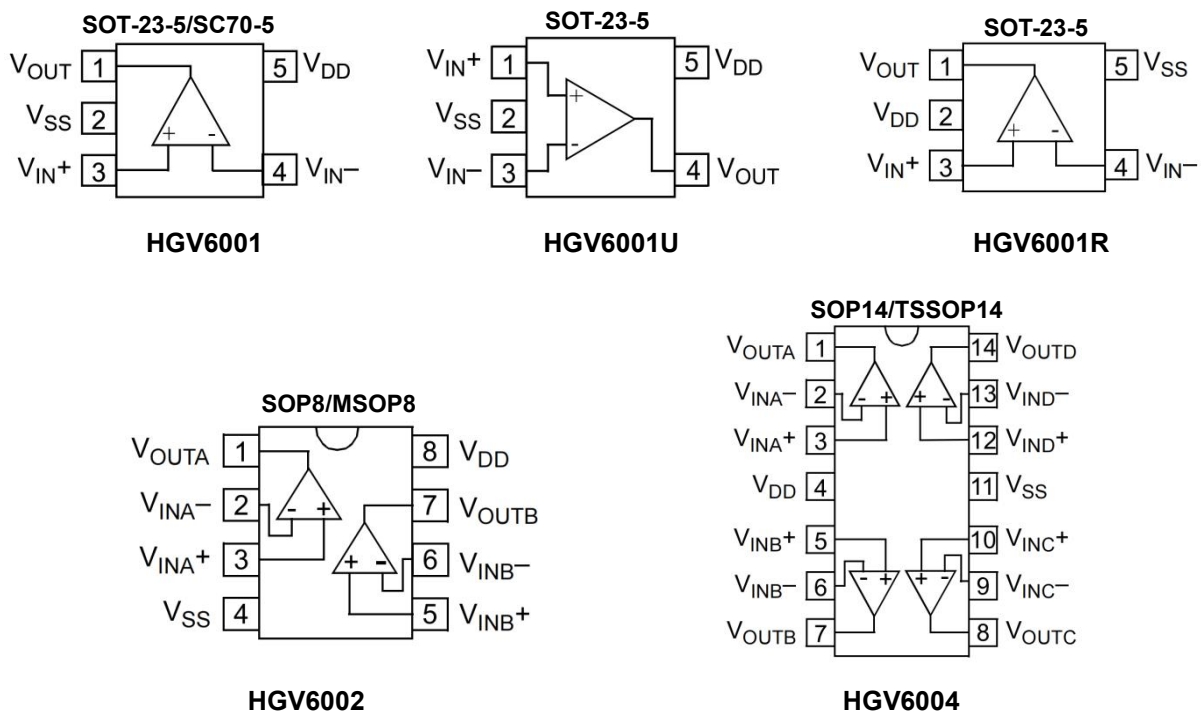


Figure 1. Pin Assignment Diagram

## Absolute Maximum Ratings

Condition	Min	Max
Power Supply Voltage (VDD to Vss)	-0.5V	+7.5V
Analog Input Voltage (IN+ or IN-)	Vss-0.5V	VDD+0.5V
PDB Input Voltage	Vss-0.5V	+7V
Operating Temperature Range <sup>(1)</sup>	-40°C	+125°C
Junction Temperature	+160°C	
Storage Temperature Range	-55°C	+150°C
Lead Temperature (soldering, 10sec)	+260°C	
Package Thermal Resistance (TA=+25°C)		
SOP-8, θJA	125°C/W	
MSOP-8, θJA	216°C/W	
SOT-23-5, θJA	190°C/W	
SC70-5, θJA	333°C/W	
ESD Susceptibility		
HBM	6KV	
MM	400V	

**Note:** Stress greater than those listed under Absolute Maximum Ratings may cause permanent damage to the device. This is a stress rating only and functional operation of the device at these or any other conditions outside those indicated in the operational sections of this specification are not implied. Exposure to absolute maximum rating conditions for extended periods may affect reliability.

**Note(1):** Operating temperature range: -40°C to +125°C. This product is designed for industrial grade applications. For automotive grade versions compliant with AEC-Q100, please conduct internal screening per the standard or contact our sales team for availability.

## Electrical Characteristics

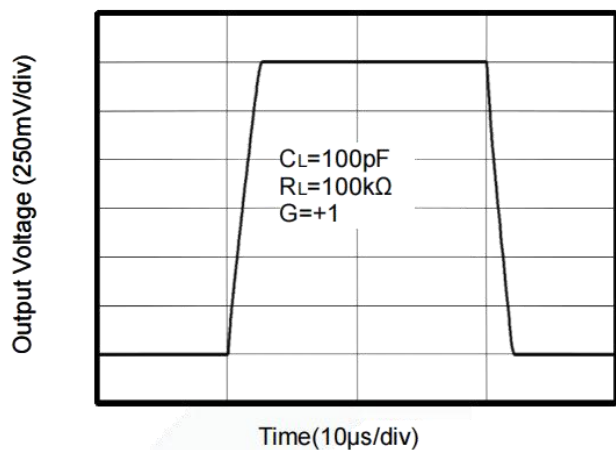
(At  $V_S = +5V$ ,  $R_L = 100k\Omega$  connected to  $V_S/2$ , and  $V_{OUT} = V_S/2$ , unless otherwise noted.)

PARAMETER	SYMBOL	CONDITIONS	HGV6001/2/4				
			TYP	MIN/MAX OVER TEMPERATURE			
			+25℃	+25℃	-40℃ to +85℃	UNITS	MIN/MAX
INPUT CHARACTERISTICS							
Input Offset Voltage	VOS	VCM = VS/2	0.8	3.5	5.6	mV	MAX
Input Bias Current	IB		1			pA	TYP
Input Offset Current	IOS		1			pA	TYP
Common-Mode Voltage Range	VCM	VS = 5.5V	-0.1 to +5.6			V	TYP
Common-Mode Rejection Ratio	CMRR	VS = 5.5V, VCM = -0.1V to 4V	70	62	62	dB	MIN
		VS = 5.5V, VCM = -0.1V to 5.6V	68	56	55		
Open-Loop Voltage Gain	AOL	RL = 5kΩ, VO = +0.1V to +4.9V	80	70	70	dB	MIN
		RL = 10kΩ, VO = +0.1V to +4.9V	100	94	85		
Input Offset Voltage Drift	ΔVOS/ΔT		2.7			μV/℃	TYP
OUTPUT CHARACTERISTICS							
Output Voltage Swing from Rail	VOH	RL = 100kΩ	4.997	4.980	4.970	V	MIN
	VOL	RL = 100kΩ	5	20	30	mV	MAX
	VOH	RL = 10kΩ	4.992	4.970	4.960	V	MIN
	VOL	RL = 10kΩ	8	30	40	mV	MAX
Output Current	ISOURCE	RL = 10Ω to VS/2	84	60	45	mA	MIN
	ISINK		75	60	45		
POWER SUPPLY							
Operating Voltage Range				1.8	1.8	V	MIN
				6	6	V	MAX
Power Supply Rejection Ratio	PSRR	VS = +2.5V to +6V, VCM = +0.5V	82	60	58	dB	MIN
Quiescent Current / Amplifier	IQ		75	110	125	μA	MAX
DYNAMIC PERFORMANCE (CL = 100pF)							
Gain-Bandwidth Product	GBP		1			MHz	TYP
Slew Rate	SR	G = +1, 2V Output Step	0.8			V/μs	TYP
Settling Time to 0.1%	tS	G = +1, 2V Output Step	5.3			μs	TYP
Overload Recovery Time		VIN ·Gain = VS	2.6			μs	TYP
NOISE PERFORMANCE							
Voltage Noise Density	en	f = 1kHz	27			nV/√Hz	TYP
		f = 10kHz	20			nV/√Hz	TYP

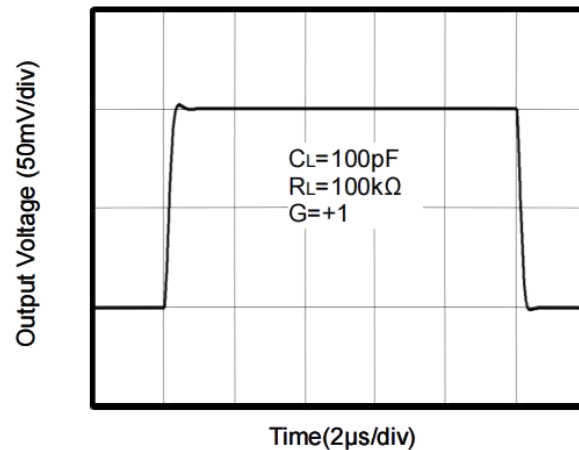
## Typical Performance characteristics

At  $T_A = +25^\circ\text{C}$ ,  $V_S = 5\text{V}$ ,  $R_L = 100\text{k}\Omega$  connected to  $V_S/2$  and  $V_{OUT} = V_S/2$ , unless otherwise noted.

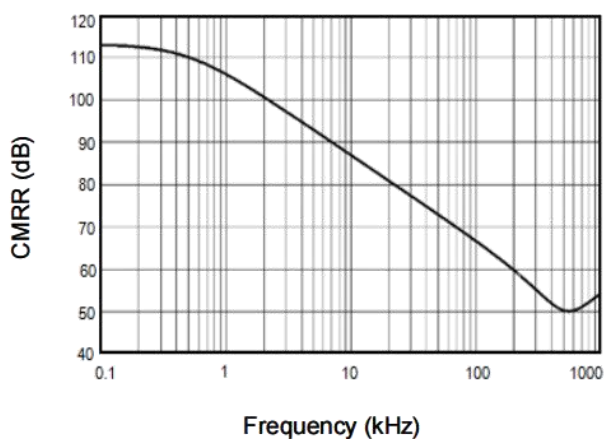
Large Signal Transient Response



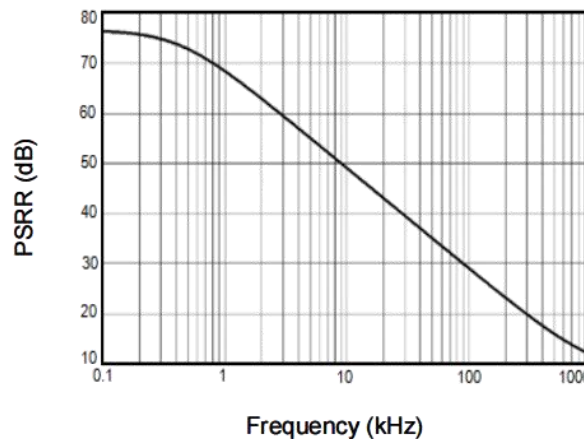
Small Signal Transient Response



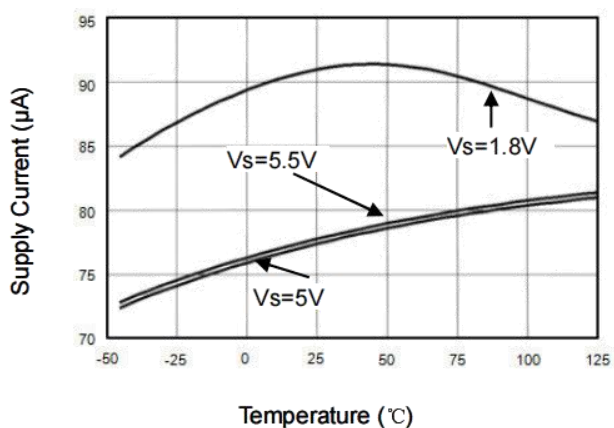
CMRR vs. Frequency



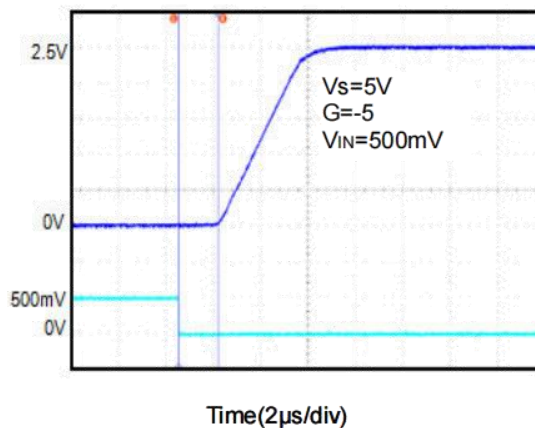
PSRR vs. Frequency



Supply Current vs. Temperature

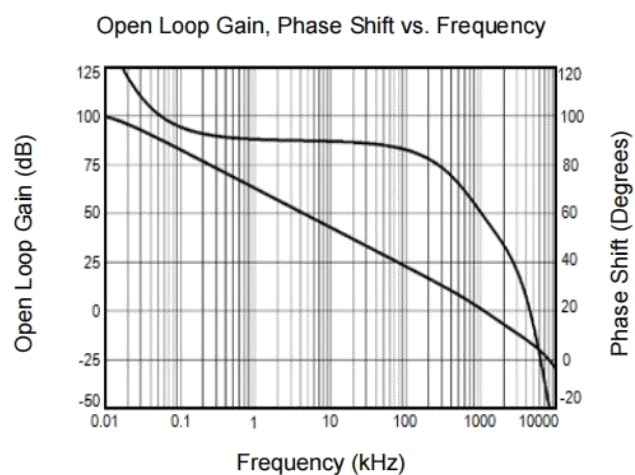
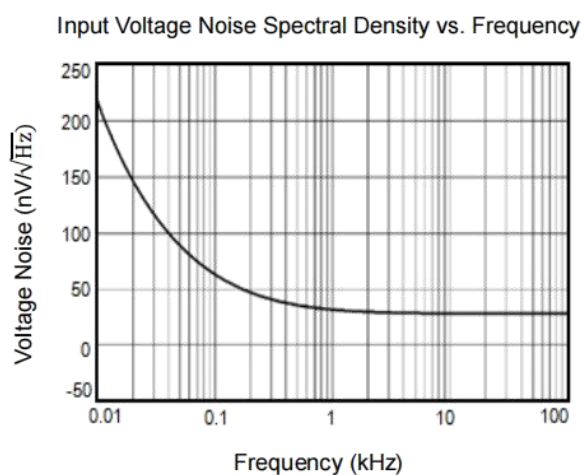
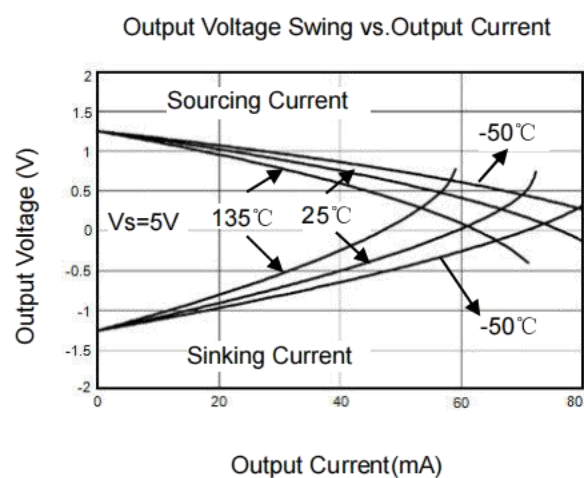
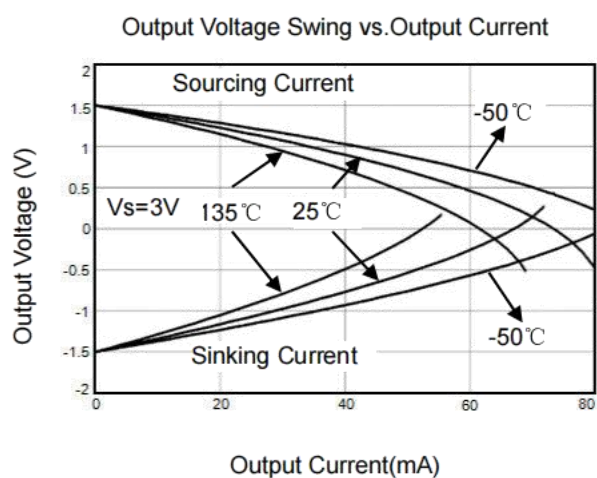


Overload Recovery Time



## Typical Performance characteristics

At  $T_A = +25^\circ\text{C}$ ,  $R_L = 100\text{K}\Omega$  connected to  $V_S/2$  and  $V_{OUT} = V_S/2$ , unless otherwise noted.



## Application Note

### Size

HGV6001 family series op amps are unity-gain stable and suitable for a wide range of general-purpose applications. The small footprints of the HGV6001 family packages save space on printed circuit boards and enable the design of smaller electronic products.

### Power Supply Bypassing and Board Layout

HGV6001 family series operates from a single 1.8V to 6V supply or dual  $\pm 0.9V$  to  $\pm 3V$  supplies. For best performance, a 0.1 $\mu F$  ceramic capacitor should be placed close to the VDD pin in single supply operation. For dual supply operation, both VDD and VSS supplies should be bypassed to ground with separate 0.1 $\mu F$  ceramic capacitors.

### Low Supply Current

The low supply current (typical 75 $\mu A$  per channel) of HGV6001 family will help to maximize battery life. They are ideal for battery powered systems.

### Operating Voltage

HGV6001 family operates under wide input supply voltage (1.8V to 6V). In addition, all temperature specifications apply from -40 °C to +125 °C. Most behavior remains unchanged throughout the full operating voltage range. These guarantees ensure operation throughout the single Li-Ion battery lifetime.

### Rail-to-Rail Input

The input common-mode range of HGV6001 family extends 100mV beyond the supply rails (VSS-0.1V to VDD+0.1V). This is achieved by using complementary input stage. For normal operation, inputs should be limited to this range.

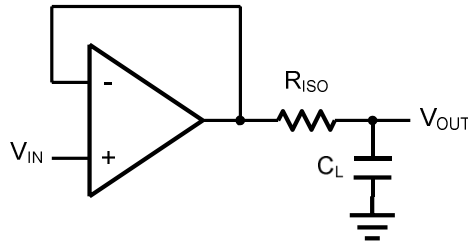
### Rail-to-Rail Output

Rail-to-Rail output swing provides maximum possible dynamic range at the output. This is particularly important when operating in low supply voltages. The output voltage of HGV6001 family can typically swing to less than 10mV from supply rail in light resistive loads (>100k $\Omega$ ), and 60mV of supply rail in moderate resistive loads (10k $\Omega$ ).

### Capacitive Load Tolerance

The HGV6001 family is optimized for bandwidth and speed, not for driving capacitive loads. Output capacitance will create a pole in the amplifier's feedback path, leading to excessive peaking and potential oscillation. If dealing with load capacitance is a requirement of the application, the two strategies to consider are (1) using a small resistor in series with the amplifier's output and the load capacitance and (2) reducing the bandwidth of the amplifier's feedback loop by increasing the overall noise gain. Figure 2 shows a unity gain follower using the series resistor strategy. The resistor isolates the output from the capacitance and, more importantly, creates a zero in the feedback path that compensates for the pole created by the output capacitance.

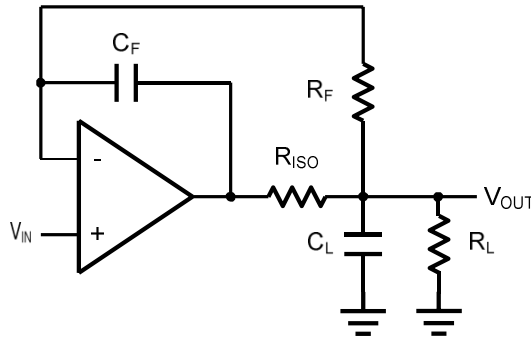




**Figure 2 Indirectly Driving a Capacitive Load Using Isolation Resistor**

The bigger the  $R_{ISO}$  resistor value, the more stable  $V_{OUT}$  will be. However, if there is a resistive load  $R_L$  in parallel with the capacitive load, a voltage divider (proportional to  $R_{ISO}/R_L$ ) is formed, this will result in a gain error.

The circuit in Figure 3 is an improvement to the one in Figure 2.  $R_F$  provides the DC accuracy by feed-forward the  $V_{IN}$  to  $R_L$ .  $C_F$  and  $R_{ISO}$  serve to counteract the loss of phase margin by feeding the high frequency component of the output signal back to the amplifier's inverting input, thereby preserving the phase margin in the overall feedback loop. Capacitive drive can be increased by increasing the value of  $C_F$ . This in turn will slow down the pulse response.



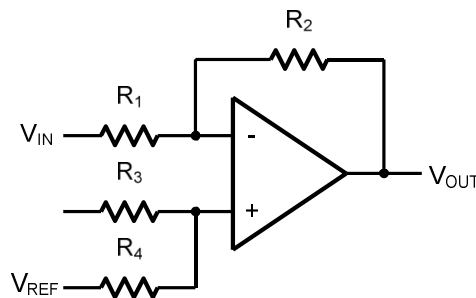
**Figure 3. Indirectly Driving a Capacitive Load with DC Accuracy**

## Typical Application Circuits

### Differential amplifier

The differential amplifier allows the subtraction of two input voltages or cancellation of a signal common the two inputs. It is useful as a computational amplifier in making a differential to single-end conversion or in rejecting a common mode signal.

Figure 4. shown the differential amplifier using HGV6001 fami.ly



**Figure 4. Differential Amplifier**

$$V_{OUT} = \left( \frac{R_1 + R_2}{R_3 + R_4} \right) \frac{R_4}{R_1} V_{IN} - \frac{R_2}{R_1} V_{IP} + \left( \frac{R_1 + R_2}{R_3 + R_4} \right) \frac{R_3}{R_1} V_{REF}$$

If the resistor ratios are equal (i.e.  $R_1 = R_3$  and  $R_2 = R_4$ ), then

$$V_{OUT} = \frac{R_2}{R_1} (V_{IP} - V_{IN}) + V_{REF}$$



## Low Pass Active Filter

The low pass active filter is shown in Figure 5. The DC gain is defined by  $-R_2/R_1$ . The filter has a -20dB/decade roll-off after its corner frequency  $f_C=1/(2\pi R_3 C_1)$ .

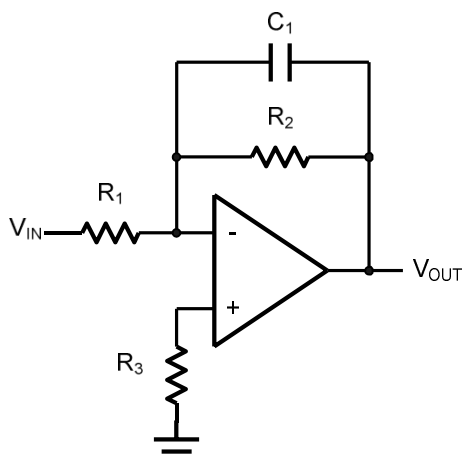


Figure 5. Low Pass Active Filter

## Instrumentation Amplifier

The triple HGV6001 family can be used to build a three-op-amp instrumentation amplifier as shown in Figure 6. The amplifier in Figure 6 is a high input impedance differential amplifier with gain of  $R_2/R_1$ . The two differential voltage followers assure the high input impedance of the amplifier.

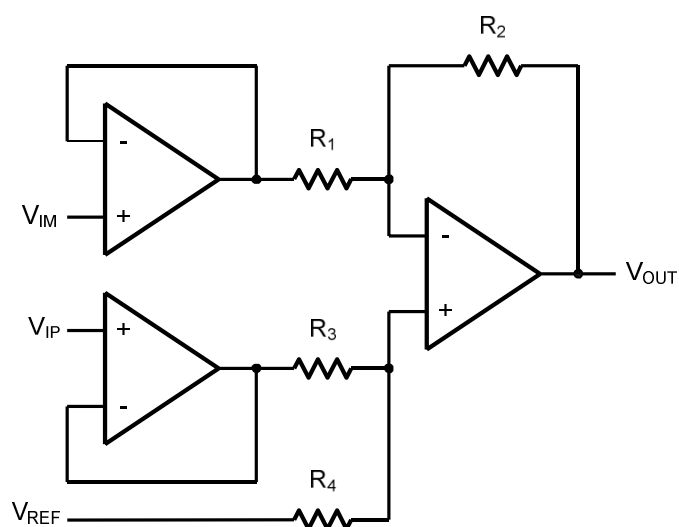
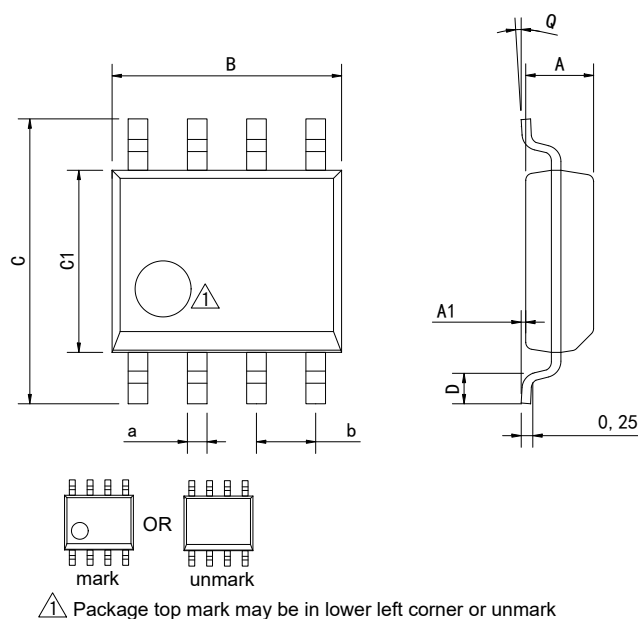


Figure 6. Instrument Amplifier

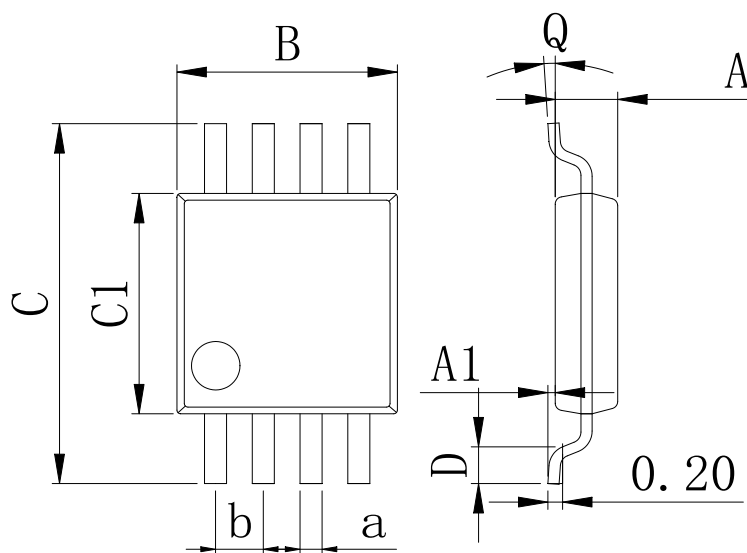
## Physical Dimensions

### SOP-8



Dimensions In Millimeters(SOP-8)									
Symbol:	A	A1	B	C	C1	D	Q	a	b
Min:	1.35	0.05	4.90	5.80	3.80	0.40	0°	0.35	1.27 BSC
Max:	1.55	0.20	5.10	6.20	4.00	0.80	8°	0.45	

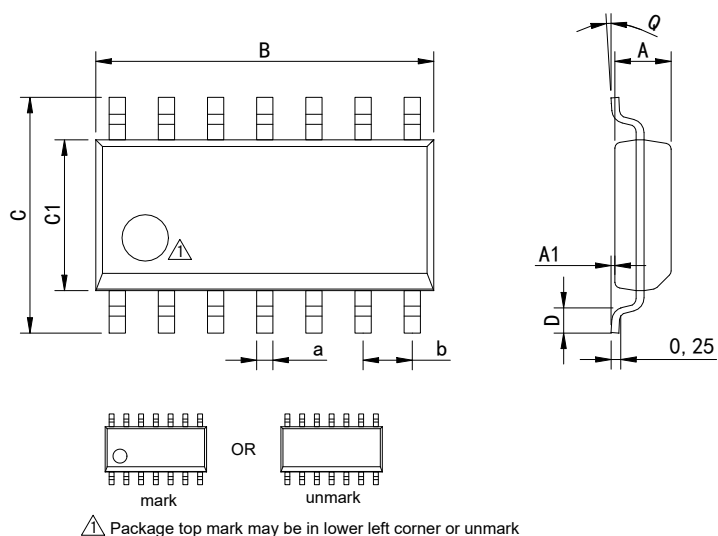
### MSOP-8



Dimensions In Millimeters(MSOP-8)									
Symbol:	A	A1	B	C	C1	D	Q	a	b
Min:	0.80	0.05	2.90	4.75	2.90	0.35	0°	0.25	0.65 BSC
Max:	0.90	0.20	3.10	5.05	3.10	0.75	8°	0.35	

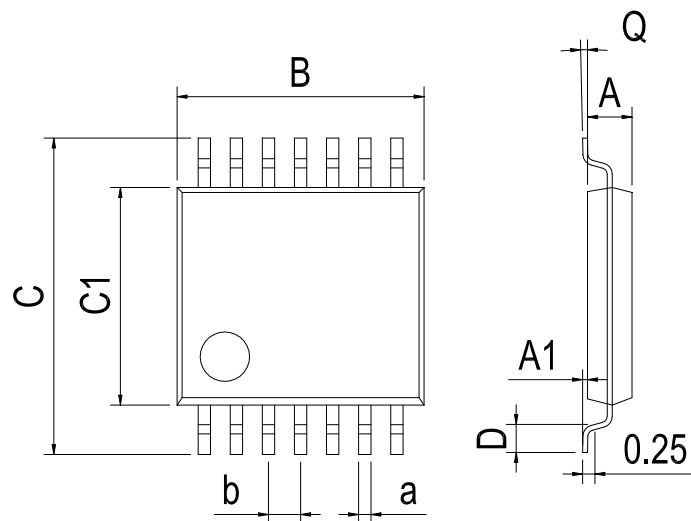
## Physical Dimensions

### SOP-14



Dimensions In Millimeters(SOP-14)									
Symbol:	A	A1	B	C	C1	D	Q	a	b
Min:	1.35	0.05	8.55	5.80	3.80	0.40	0°	0.35	1.27 BSC
Max:	1.55	0.20	8.75	6.20	4.00	0.80	8°	0.45	

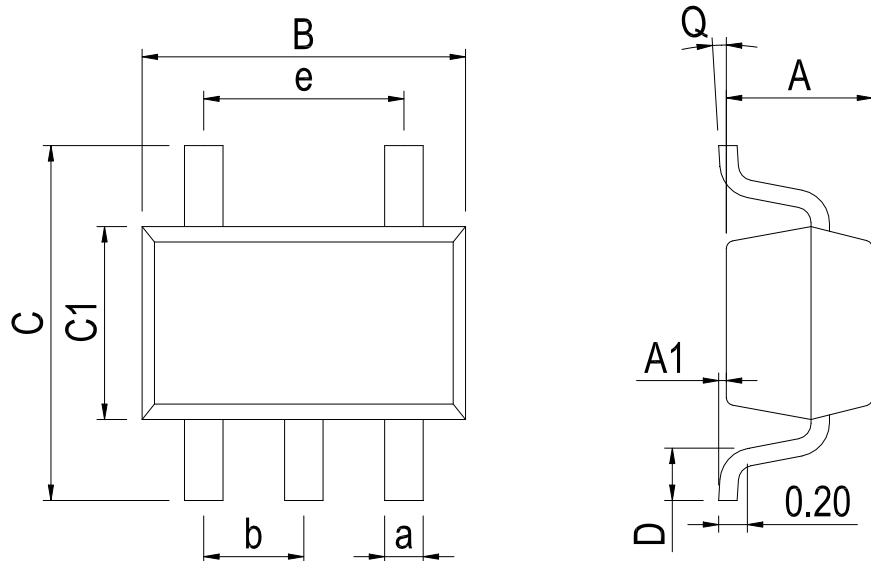
### TSSOP-14



Dimensions In Millimeters(TSSOP-14)									
Symbol:	A	A1	B	C	C1	D	Q	a	b
Min:	0.85	0.05	4.90	6.20	4.30	0.40	0°	0.20	0.65 BSC
Max:	0.95	0.20	5.10	6.60	4.50	0.80	8°	0.25	

## Physical Dimensions

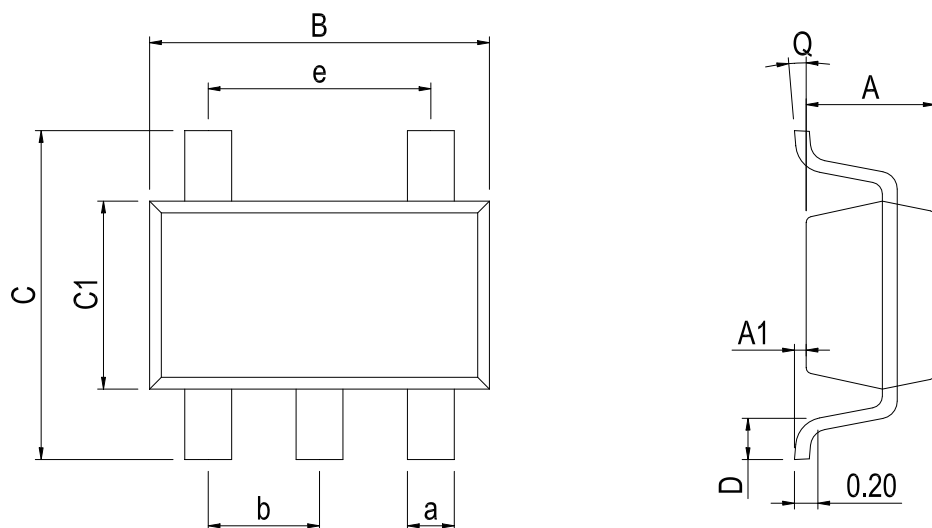
SOT-23-5



Dimensions In Millimeters(SOT-23-5)

Symbol:	A	A1	B	C	C1	D	Q	a	b	e
Min:	1.00	0.00	2.82	2.65	1.50	0.30	0°	0.30	0.95 BSC	1.90 BSC
Max:	1.15	0.15	3.02	2.95	1.70	0.60	8°	0.50		

SC70-5



Dimensions In Millimeters(SC70-5)

Symbol:	A	A1	B	C	C1	D	Q	a	b	e
Min:	0.90	0.00	2.00	2.15	1.15	0.26	0°	0.15	0.65 BSC	1.30 BSC
Max:	1.00	0.15	2.20	2.45	1.35	0.46	8°	0.35		

## Revision History

REVISION NUMBER	DATE	REVISION	PAGE
V1.0	2015-3	New	1-14
V1.1	2018-10	Update encapsulation type、 Update SC70-5 form factor	1、 12
V1.2	2024-10	Add a model marking name、 Update Lead Temperature	3
V1.3	2025-12	Update important statements、 Update SOP-8 and SOP-14 Dimension drawing	10、 11

**IMPORTANT STATEMENT:**

Huaguan Semiconductor reserves the right to change products and services offered without prior notice. Customers should obtain the latest relevant information before placing orders and verify that such information is current and complete. Huaguan Semiconductor assumes no responsibility or liability for altered documents.

Customers are responsible for complying with safety standards and implementing safety measures when using Huaguan Semiconductor products in system design and end-product manufacturing. You assume full responsibility for: selecting the appropriate Huaguan Semiconductor products for your application; designing, validating, and testing your application; and ensuring that your application complies with applicable standards and all other safety, security, or other requirements. This is to prevent potential risks that may lead to personal injury or property damage.

Huaguan Semiconductor products are not approved for use in life support, military, aerospace, or other high-risk applications. Huaguan products are neither intended nor warranted for use in such systems or equipment. Any failure or malfunction may lead to personal injury or severe property damage. Such applications are deemed "Unsafe Use." Unsafe Use includes, but is not limited to: surgical and medical equipment, nuclear energy control equipment, aircraft or spacecraft instruments, control or operation of vehicle power, braking, or safety systems, traffic signal instruments, all types of safety devices, and any other applications intended to support or sustain life. Huaguan Semiconductor shall not be liable for consequences resulting from Unsafe Use in these fields. Users must independently evaluate and assume all risks. Any issues, liabilities, or losses arising from the use of products beyond their approved applications shall be solely borne by the user. Users may not claim any compensation from Huaguan Semiconductor based on these terms. If any third party claims against Huaguan Semiconductor due to such Unsafe Use, the user shall compensate Huaguan Semiconductor for all resulting damages and liabilities.

Huaguan Semiconductor provides technical and reliability data (including datasheets), design resources (including reference designs), application or other design advice, web tools, safety information, and other resources for its semiconductor products. However, no guarantee is made that these resources are free from defects, and no express or implied warranties are provided. The use of testing and other quality control techniques is limited to Huaguan Semiconductor's quality assurance scope. Not all parameters of each device are tested.

Huaguan Semiconductor's documentation authorizes you to use these resources only for developing applications related to the products described herein. You are not granted rights to any other intellectual property of Huaguan Semiconductor or any third party. Any other reproduction or display of these resources is strictly prohibited. You shall fully indemnify Huaguan Semiconductor and its agents against any claims, damages, costs, losses, and liabilities arising from your use of these resources. Huaguan Semiconductor shall not be held responsible.