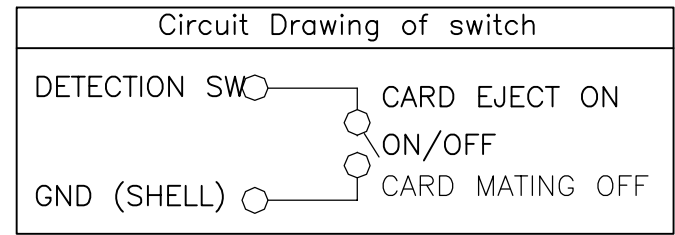
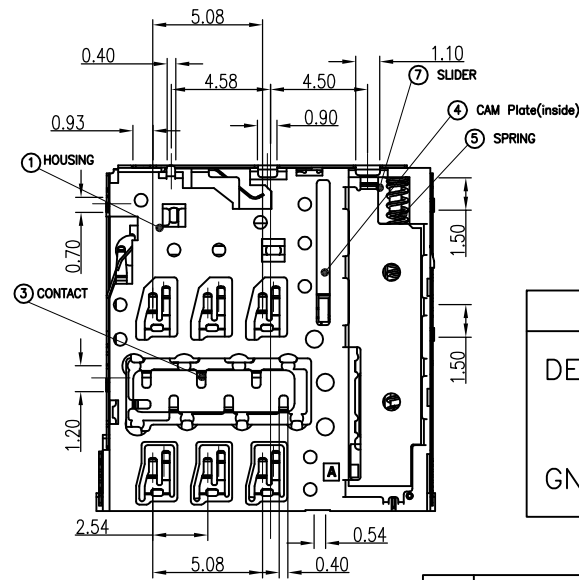
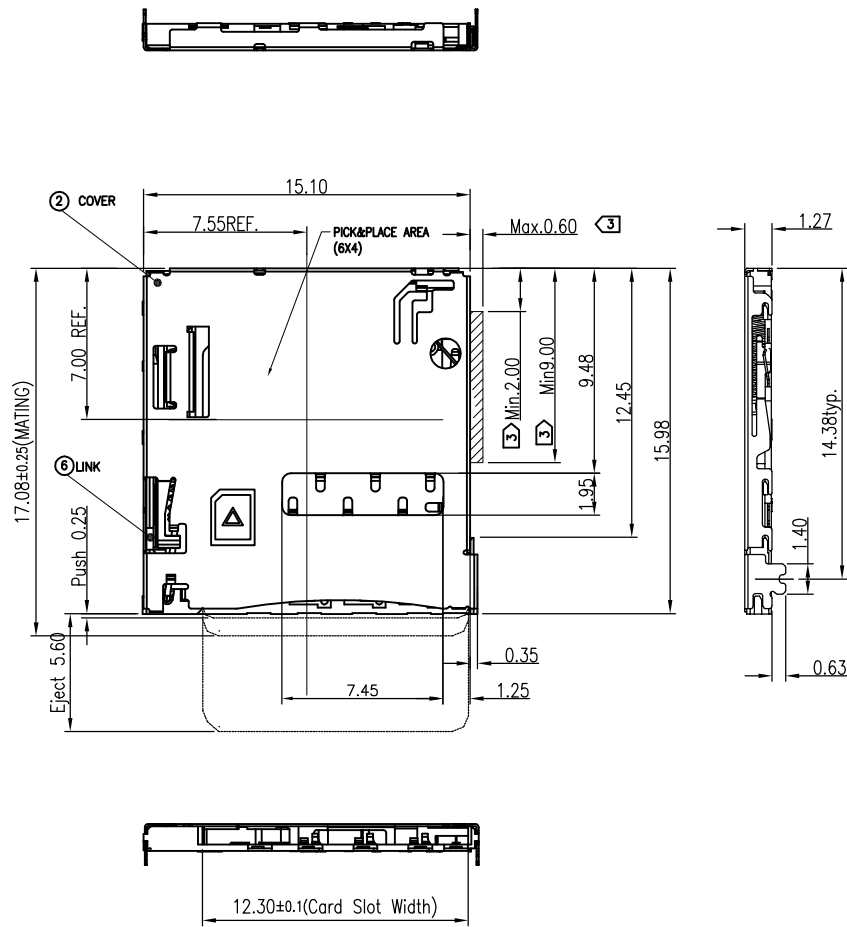


REV.	ECN.NO.	MODIFY.CONTENT	DATE
A			



7	SLIDER	1	LCP UL94V-0
6	LINK	1	STAINLESS STEEL
5	SPRING	1	SWP-B
4	CAM Plate (inside)	1	STAINLESS STEEL
3	CONTACT	1	COPPER ALLOY Nickel Barrier Contact: Au 1u" Min over Ni 40~200u" Lead : Au flash 1u" Min over Ni 40~200u"
2	COVER	1	STAINLESS STEEL Not hold down : Nickel 10~200u" Hold down : Au flash 1u" Min over Ni 10~200u"
1	HOUSING	1	LCP UL94V-0
NO.	DESCRIPTION	Q'TY	Material

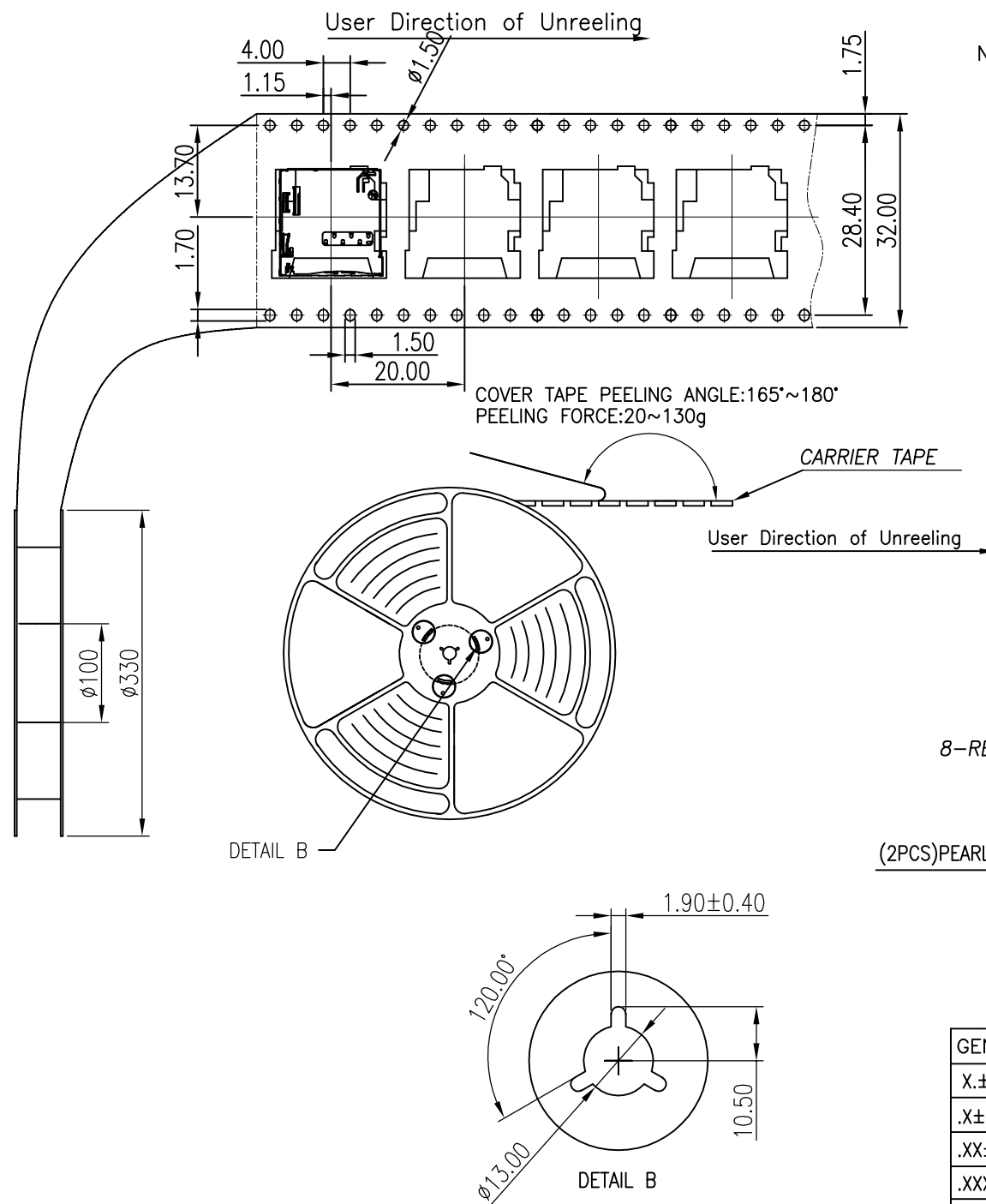
- NOTE:
1. LEAD Co-planarity :Max 0.10mm;
 2. No rust, contamination, damage nor deformation effecting on function
 - ③ Switch moving area
 - ④ Non-cumulative tolerance
 5. Circuit Drawing of switch

GENERAL TOLERANCE		图 号	设计	比例	1:1
X±0.35	x.'±5°	品 名	MICRO SIM CARD PUSH TYPE 1.27H	审 核	单 位 mm
X±0.25	.x'±2°			核 准	视 角
.XX±0.15	.xx'±1°	料 號	5001B-SIM127-100	日 期	2016/01/09
.XXX±0.05	.xxx'±0.5°			版 本	A
SHEET	1/3	东莞市文章济美电子有限公司			

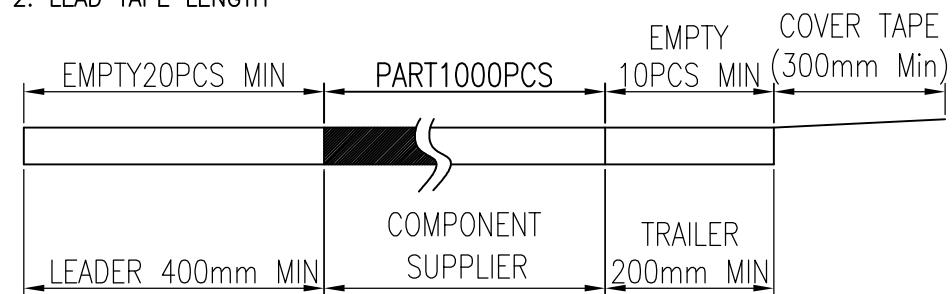
Figure 1: Dimensions of the 100-pin connector. The drawing shows the top and side views of the connector with various dimensions specified in millimeters (mm). Key dimensions include:

- Overall width: 10.24mm
- Pin pitch: 0.875mm
- Pin height: 1.665mm
- Pin spacing: 0.715mm
- Pin diameter: 0.35mm
- Pin diameter: 0.3mm
- Pin diameter: 0.25mm
- Pin diameter: 0.2mm
- Pin diameter: 0.15mm
- Pin diameter: 0.1mm
- Pin diameter: 0.05mm
- Pin diameter: 0.025mm
- Pin diameter: 0.015mm
- Pin diameter: 0.01mm
- Pin diameter: 0.005mm
- Pin diameter: 0.0025mm
- Pin diameter: 0.0015mm
- Pin diameter: 0.001mm
- Pin diameter: 0.0005mm
- Pin diameter: 0.00025mm
- Pin diameter: 0.00015mm
- Pin diameter: 0.0001mm
- Pin diameter: 0.00005mm
- Pin diameter: 0.000025mm
- Pin diameter: 0.000015mm
- Pin diameter: 0.00001mm
- Pin diameter: 0.000005mm
- Pin diameter: 0.0000025mm
- Pin diameter: 0.0000015mm
- Pin diameter: 0.000001mm
- Pin diameter: 0.0000005mm
- Pin diameter: 0.00000025mm
- Pin diameter: 0.00000015mm
- Pin diameter: 0.0000001mm
- Pin diameter: 0.00000005mm
- Pin diameter: 0.000000025mm
- Pin diameter: 0.000000015mm
- Pin diameter: 0.00000001mm
- Pin diameter: 0.000000005mm
- Pin diameter: 0.0000000025mm
- Pin diameter: 0.0000000015mm
- Pin diameter: 0.000000001mm
- Pin diameter: 0.0000000005mm
- Pin diameter: 0.00000000025mm
- Pin diameter: 0.00000000015mm
- Pin diameter: 0.0000000001mm
- Pin diameter: 0.00000000005mm
- Pin diameter: 0.000000000025mm
- Pin diameter: 0.000000000015mm
- Pin diameter: 0.00000000001mm
- Pin diameter: 0.000000000005mm
- Pin diameter: 0.0000000000025mm
- Pin diameter: 0.0000000000015mm
- Pin diameter: 0.000000000001mm
- Pin diameter: 0.0000000000005mm
- Pin diameter: 0.00000000000025mm
- Pin diameter: 0.00000000000015mm
- Pin diameter: 0.0000000000001mm
- Pin diameter: 0.00000000000005mm
- Pin diameter: 0.000000000000025mm
- Pin diameter: 0.000000000000015mm
- Pin diameter: 0.00000000000001mm
- Pin diameter: 0.000000000000005mm
- Pin diameter: 0.0000000000000025mm
- Pin diameter: 0.0000000000000015mm
- Pin diameter: 0.000000000000001mm
- Pin diameter: 0.0000000000000005mm
- Pin diameter: 0.00000000000000025mm
- Pin diameter: 0.00000000000000015mm
- Pin diameter: 0.0000000000000001mm
- Pin diameter: 0.00000000000000005mm
- Pin diameter: 0.000000000000000025mm
- Pin diameter: 0.000000000000000015mm
- Pin diameter: 0.00000000000000001mm
- Pin diameter: 0.000000000000000005mm
- Pin diameter: 0.0000000000000000025mm
- Pin diameter: 0.0000000000000000015mm
- Pin diameter: 0.000000000000000001mm
- Pin diameter: 0.0000000000000000005mm
- Pin diameter: 0.00000000000000000025mm
- Pin diameter: 0.00000000000000000015mm
- Pin diameter: 0.0000000000000000001mm
- Pin diameter: 0.00000000000000000005mm
- Pin diameter: 0.000000000000000000025mm
- Pin diameter: 0.000000000000000000015mm
- Pin diameter: 0.00000000000000000001mm
- Pin diameter: 0.000000000000000000005mm
- Pin diameter: 0.0000000000000000000025mm
- Pin diameter: 0.0000000000000000000015mm
- Pin diameter: 0.000000000000000000001mm
- Pin diameter: 0.0000000000000000000005mm
- Pin diameter: 0.00000000000000000000025mm
- Pin diameter: 0.00000000000000000000015mm
- Pin diameter: 0.0000000000000000000001mm
- Pin diameter: 0.00000000000000000000005mm
- Pin diameter: 0.000000000000000000000025mm
- Pin diameter: 0.000000000000000000000015mm
- Pin diameter: 0.00000000000000000000001mm
- Pin diameter: 0.000000000000000000000005mm
- Pin diameter: 0.0000000000000000000000025mm
- Pin diameter: 0.0000000000000000000000015mm
- Pin diameter: 0.000000000000000000000001mm
- Pin diameter: 0.0000000000000000000000005mm
- Pin diameter: 0.00000000000000000000000025mm
- Pin diameter: 0.00000000000000000000000015mm
- Pin diameter: 0.0000000000000000000000001mm
- Pin diameter: 0.00000000000000000000000005mm
- Pin diameter: 0.000000000000000000000000025mm
- Pin diameter: 0.000000000000000000000000015mm
- Pin diameter: 0.00000000000000000000000001mm
- Pin diameter: 0.000000000000000000000000005mm
- Pin diameter: 0.0000000000000000000000000025mm
- Pin diameter: 0.0000000000000000000000000015mm
- Pin diameter: 0.000000000000000000000000001mm
- Pin diameter: 0.0000000000000000000000000005mm
- Pin diameter: 0.00000000000000000000000000025mm
- Pin diameter: 0.00000000000000000000000000015mm
- Pin diameter: 0.0000000000000000000000000001mm
- Pin diameter: 0.00000000000000000000000000005mm
- Pin diameter: 0.000000000000000000000000000025mm
- Pin diameter: 0.000000000000000000000000000015mm
- Pin diameter: 0.00000000000000000000000000001mm
- Pin diameter: 0.000000000000000000000000000005mm
- Pin diameter: 0.0000000000000000000000000000025mm
- Pin diameter: 0.0000000000000000000000000000015mm
- Pin diameter: 0.000000000000000000000000000001mm
- Pin diameter: 0.0000000000000000000000000000005mm
- Pin diameter: 0.00000000000000000000000000000025mm
- Pin diameter: 0.00000000000000000000000000000015mm
- Pin diameter: 0.0000000000000000000000000000001mm
- Pin diameter: 0.00000000000000000000000000000005mm
- Pin diameter: 0.000000000000000000000000000000025mm
- Pin diameter: 0.000000000000000000000000000000015mm
- Pin diameter: 0.00000000000000000000000000000001mm

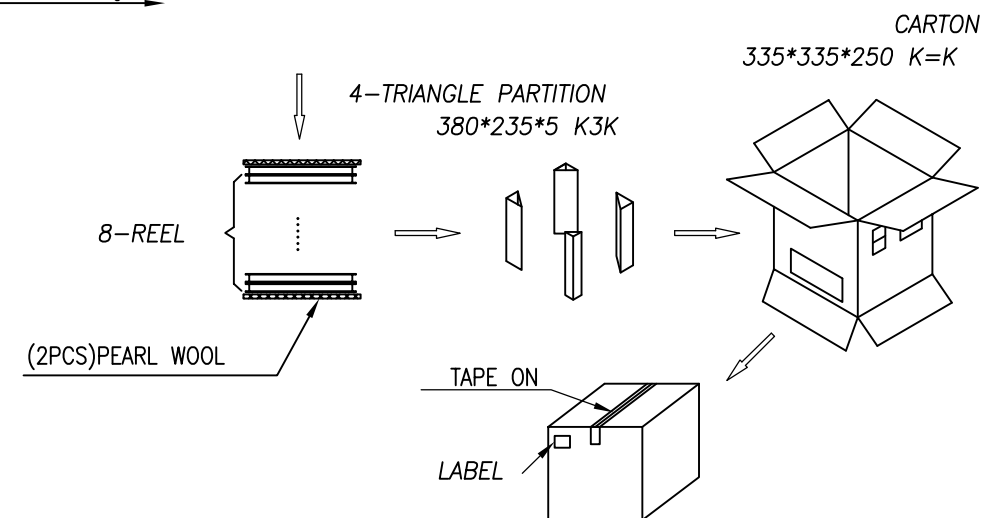
REV.	ECN.NO.	MODIFY.CONTENT	DATE
A			

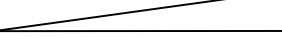

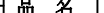


1. NUMBER OF CONNECTORS:1000PCS/REEL
2. LEAD TAPE LENGTH



3. QUANTITY: 7000PCS/CARTON
4. WEIGHT :
THE NET WEIGHT OF PER PART IS 0.38g.



GENERAL TOLERANCE		图 号		设 计		比 例	1:1	
X.±0.35	x.'±5'	品 名		MICRO SIM CARD PUSH TYPE 1.27H 包装图	审 核		單 位	mm
.X±0.25	.x'±2'			核 准		视 角		
.XX±0.15	.xx'±1'	料 號		5001B-SIM127-100	日 期	2016/01/09	版 本	A
.XXX±0.05	.xxx'±0.5'		东莞市文章济美电子有限公司					
SHEET	3/3	