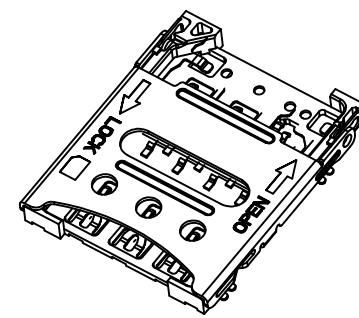
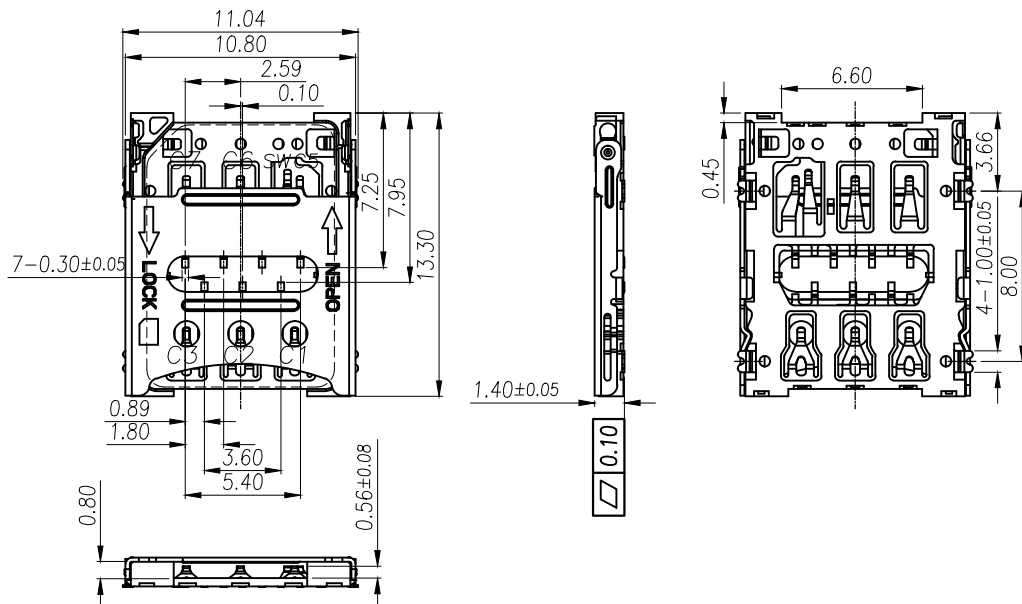
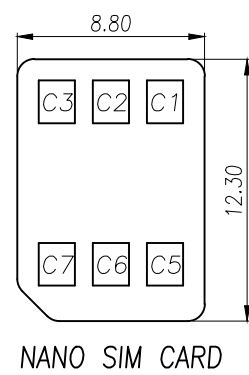
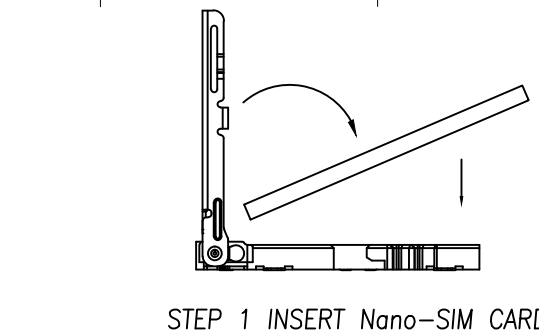


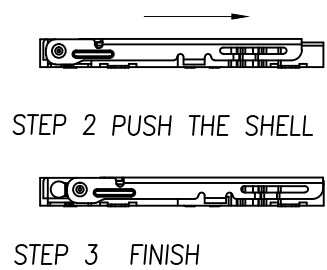
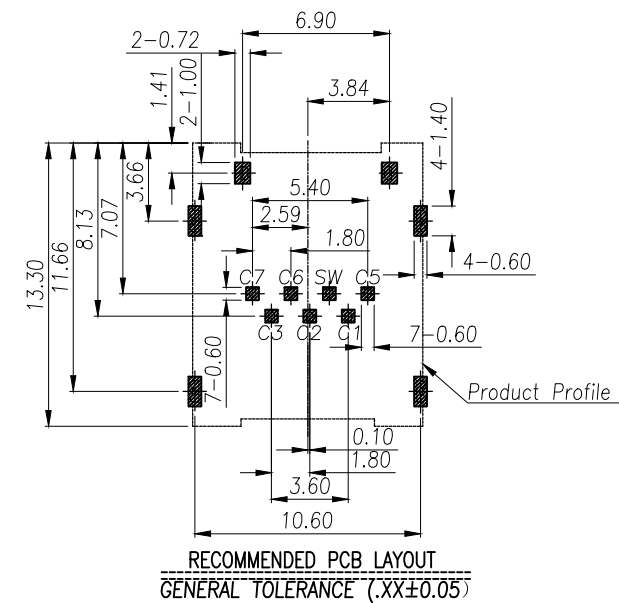
REV.	ECN.NO.	MODIFY.CONTENT	DATE
A		NEW	2015/10/31



- NOTES:
- ELECTRICAL CHARACTERISTICS
 - CONTACT RESISTANCE: 50 Milliohms Max
 - INSULATION RESISTANCE: 1,000 Megohms Min.
 - DIELECTRIC WITHSTANDING VOLTAGE: 500V AC FOR 1 MINUTE.
 - MECHANICAL CHARACTERISTICS
 - OPERATION TEMPERATURE RANGE: -25°C~+70°C
 - DURABILITY: 3000 CYCLES
 - MATERIAL:
 - HOUSING: THERMOPLASTIC,UL 94-V0
 - TERMINAL: PHOSPHOR BRONZE,T=0.10
 - SHELL: STAINLESS STEEL,T=0.15
 - FINISHED:
 - TERMINAL: Ni PLATED UNDER,Au PLATED ON CONTACT AREA,G/F PLATED ON SOLDER TAIL
 - SHELL: Ni PLATED UNDER,G/F PLATED ON SOLDER TAIL



SIM CARD	
Pin No.	NAME
C1	VCC
C2	RST
C3	CLK
C5	GND
C6	VPP
C7	I/O
SW	DETECTION SWITCH



GENERAL TOLERANCE				DWG NO.		APPD:		WIND		Scale	1:1
X.±0.45		x.°±5°		Title	1.35H 7PIN SIM CARD 内焊 掀盖式	CHKD:				UNIT	mm
.X±0.35		.x°±2°				DR:					
.XX±0.25		.xx°±1°		Part NO.	5001B-SIM135-131A	Date	2015/10/31				
.XXX±0.15		.xxx°±0.5°				东莞市文章济美电子有限公司					
SHEET		1/1									