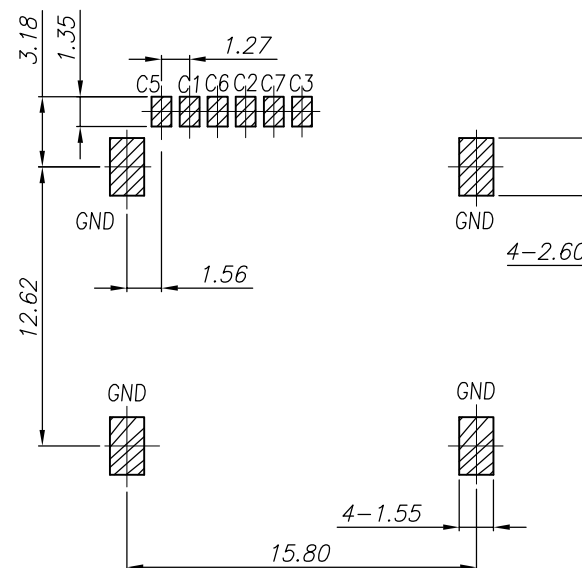
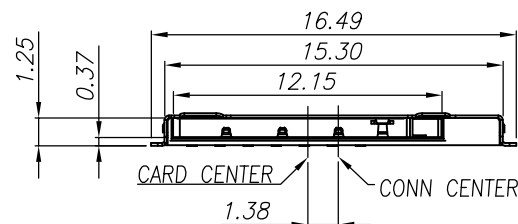
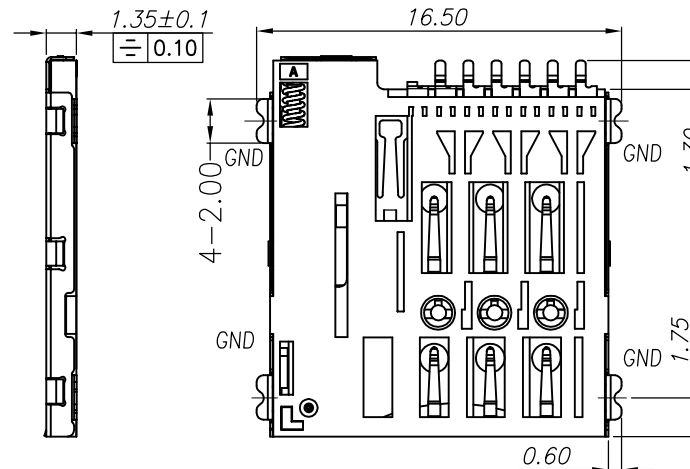
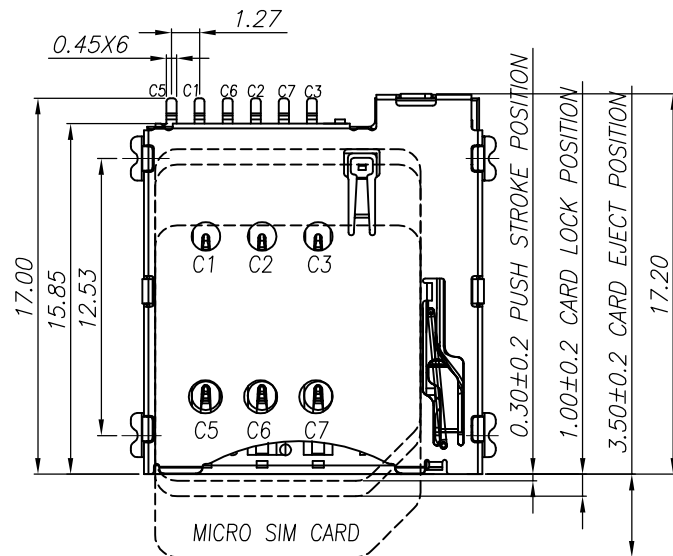


REV.	ECN.NO.	MODIFY.CONTENT	DATE
A		NEW	2012/10/29



SIM pin Assignment	
PIN#	Name
C1	VCC
C2	RST
C3	CLK
C5	GND
C6	VPP

#### NOTES:

#### MATERIAL:

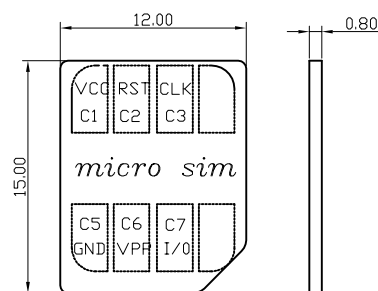
Insulator: High Temperature Thermoplastic,UL 94V-0.  
Contact: Copper Alloy  
Shell: STAINLESS

#### PLATING:

Contact: Plated 30u'' Ni Overall Contact Au 1U  
Shell: Plated 30u'' Ni Overall  
Plated 1u''Au Selective Contact Area

#### Electrical:

Current Rating :0.5mA AC/DC max.  
Voltage Rating :125V AC/DC  
Ambient Temperature Range :-20° C~+60° C  
Storage Temperature Range :-40° C~+70° C  
Ambient Humidity Range :95% R.H. Max.  
Contact Resistance:100mΩmax.  
Insulation Resistance:1000MΩmin./500VDC  
Mating Cycles:5,000 Insertions  
Temperature: 260° C ±5°



MICRO SIM CARD

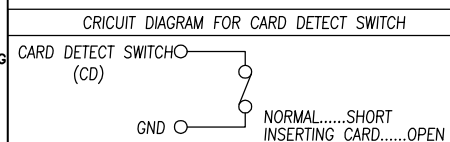
■ CIRCUIT TRACE KEEP OUT AREA  
■ SMT SOLDER AREA

THERE SHOULD NOT BE ANY CIRCUITRIES  
IN THE LAYOUT SPACE OF THE PRODUCTS.

RECOMMENDED PCB LAYOUT  
GENERAL TOLERANCE ±0.05

GENERAL TOLERANCE		DWG NO.	APPD:	WIND	Scale	1:1
X.±0.45	x.'±5°	Title	CHKD:		UNIT	mm
.X±0.35	.x'±2°		DR:			
.XX±0.25	.xx'±1°	Part NO.	Date	2012/10/29		
.XXX±0.15	.xxx'±0.5°					
SHEET	1/1					

东莞市文章济美电子有限公司



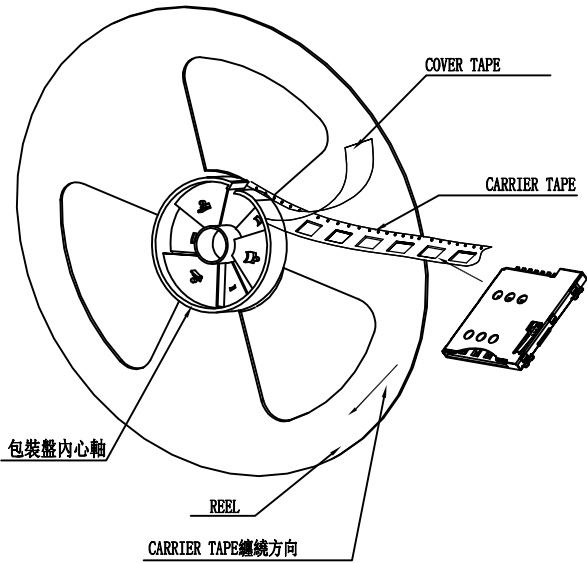
包装作业规范

REV.	ECN.NO.	MODIFY.CONTENT	DATE
A		NEW	2012/10/29

包装作業圖示及說明 (PACKING OPERATION DIAGRAM & INSTRUCTION)

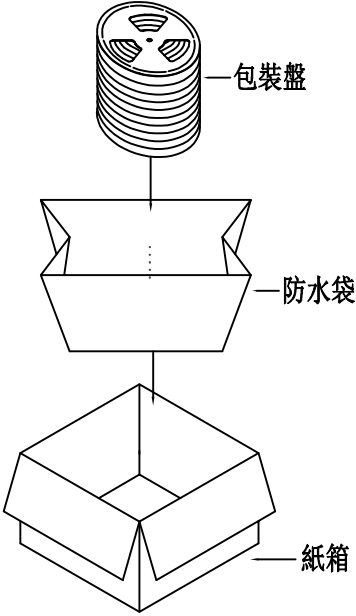
一.

- 1) 將成品一一放入包裝盤內, 依同一方向放入.
- 2) 包裝時, 如圖所示.
- 3) 一個包裝盤放置1000個成品.



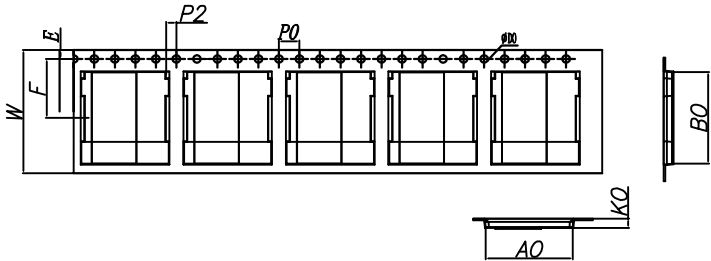
二.

- 1) 一只紙箱可放置5個包裝盤.
- 2) 一只紙箱可放5000PCS的成品.
- 3) 將成品放入包裝盤內包裝完後再裝箱.



三.

- 1) REL載帶尺寸圖.



ITEM	W	A0	B0	K0	P	F	E	S0	D0	P0	P2
DIM	24.00±0.10	17.0 ±0.10	17.85±0.10	2.0 ±0.10	20.0 ±0.10	11.50±0.10	1.75 ±0.10	0.00 ±0.10	1.50±0.10	4.00±0.10	2.00
ALTERNATE											

产品单重: 0.6 g  
每盘单重: 800 g  
每箱单重: 4100 g (5000 PCS)

GENERAL TOLERANCE			DWG NO.	5001B-SIM135-054	APPD:	WIND	Scale	1:1
X.±0.45	x.°±5°	Title	1.35H 6PIN PUSH MICRO SIM CARD CONNECIOR	CHKD:		UNIT	mm	
.X±0.35	.x.°±2°			DR:				
.XX±0.25	.xx.°±1°	Part NO.	包装图	Date	2012/10/29			
.XXX±0.15	.xxx.°±0.5°		东莞市文章济美电子有限公司					
SHEET	1/1							